

DEERFIELD COMMERCE CENTER

1033 SW 30TH AVENUE
Deerfield Beach, Florida



AVAILABLE FOR LEASE

Lease Rate: \$19.95 NNN/SF

12,385 SF AVAILABLE FOR LEASE



VISIBILITY
SW 10TH AVENUE



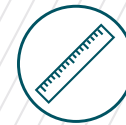
12,385 SF SF
WAREHOUSE



±2,200 SF
OF OFFICE



DOCK HIGH
LOADING



±11.30 ACRES
LOT SIZE



24 FEET
CLEAR HEIGHT

DEERFIELD COMMERCE CENTER

1033 SW 30th Avenue
Deerfield Beach



Deerfield Commerce Center is located in Deerfield Beach, Florida in Broward County

DCC consists of three quality industrial buildings that house a variety of distribution & manufacturing tenants. Building 1033 has 12,385 SF available for lease. The Property has convenient access to I-95 and Florida's Turnpike, which makes it a great location for distribution.

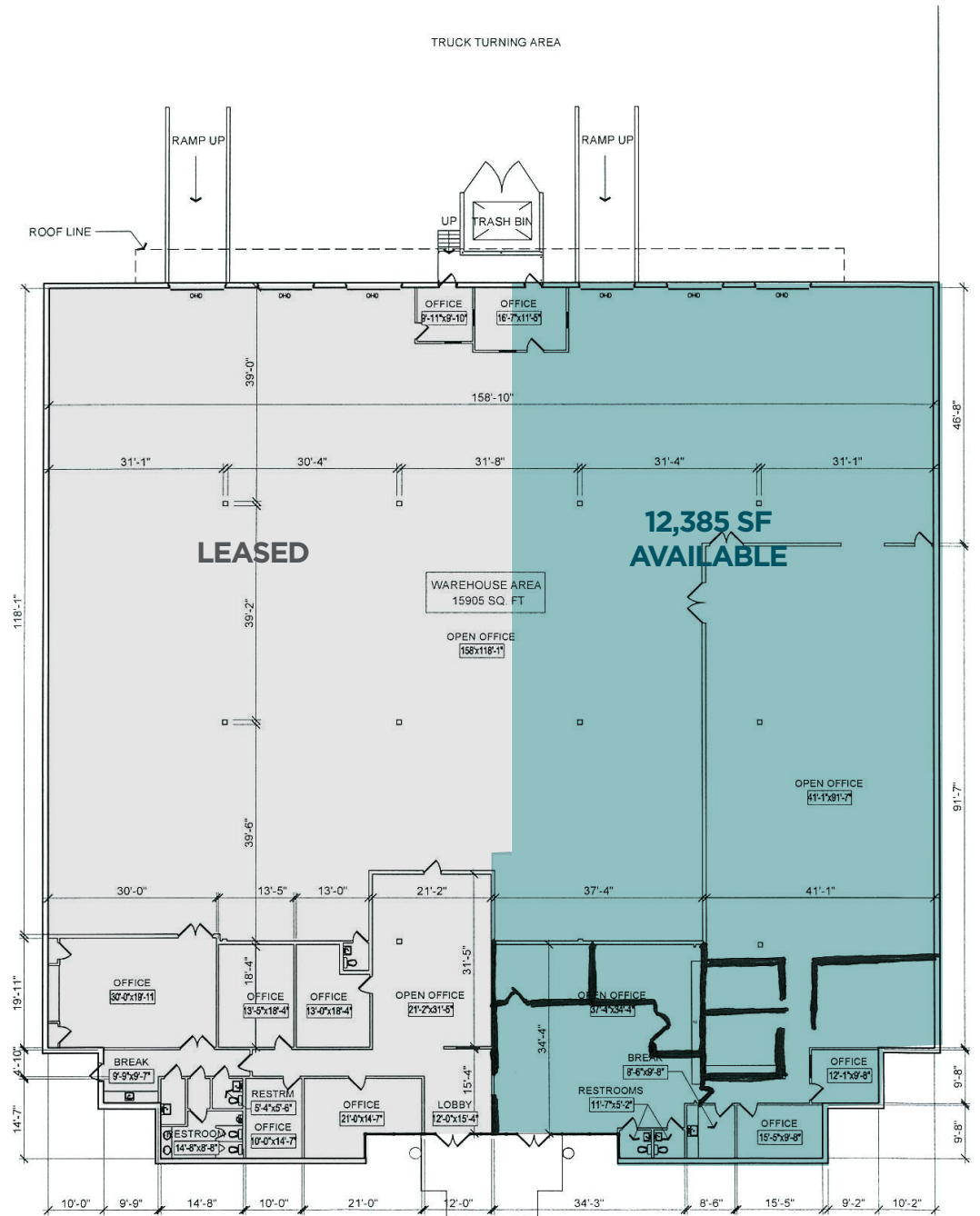
DEMOGRAPHICS

	1 Mile	3 Miles	5 Miles
2023 Est. Population	15,500	124,311	339,303
2028 Proj. Population	15,730	123,550	337,827
Average HH Income	\$57,676	\$74,342	\$89,239



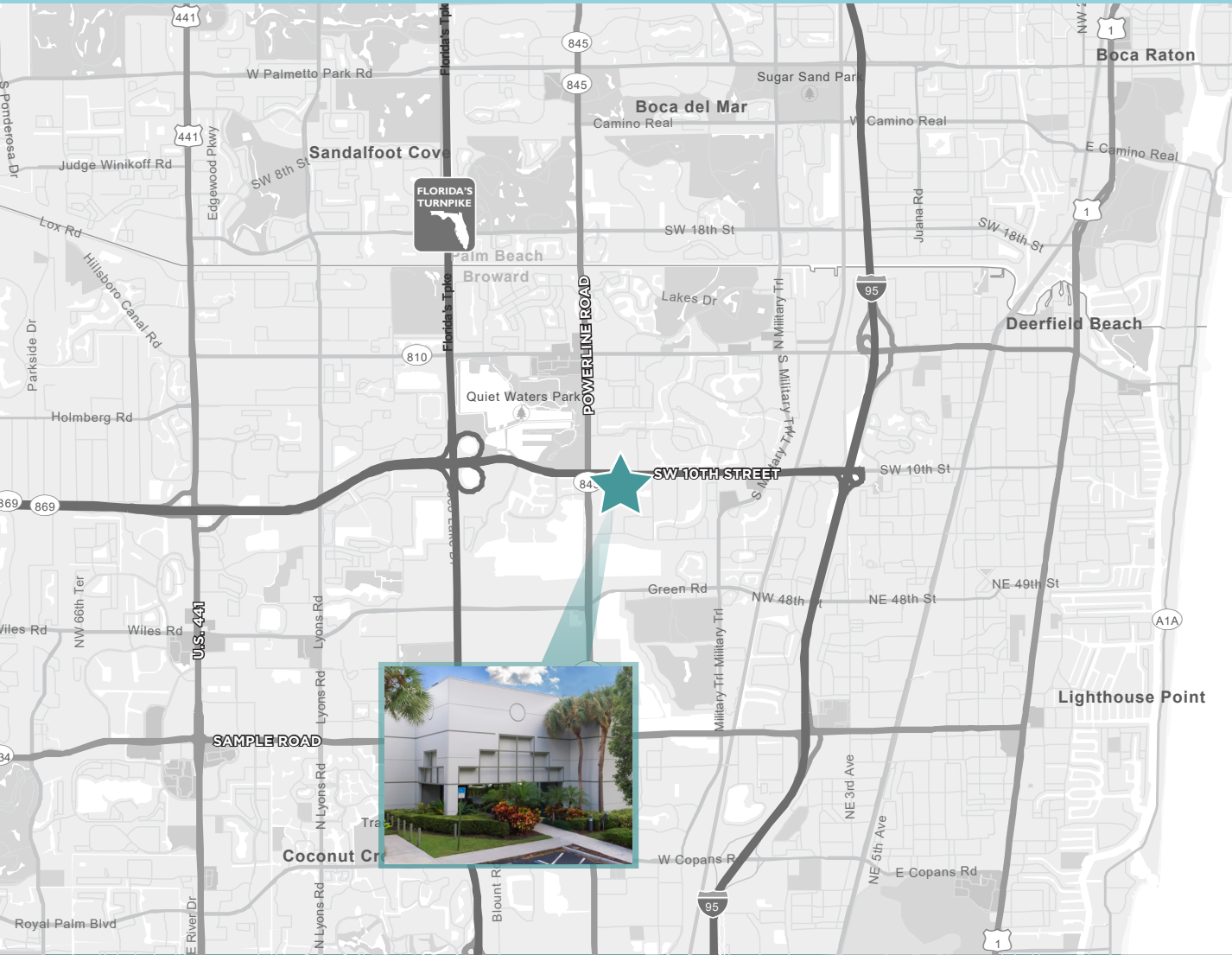
1031 BUILDING

BUILDING SIZE	25,017 SF
TOTAL AVAILABLE	12,385 SF
OFFICE AREA	±2,200 SF
ASKING RATE	\$19.95 NNN
2025 OPEX	\$6.10/SF
DOCK HEIGH DOORS	Two
DRIVE-IN RAMP	One



DEERFIELD COMMERCE CENTER

1033 SW 30th Avenue
Deerfield Beach



TRAFFIC COUNT

SW 10th St. & 30th Ave 37,524 ADT

S. Powerline Road 34,339 ADT



MATTHEW G. MCALLISTER
Managing Director
+1 561 227 2018
matthew.mcallister@cushwake.com

ERIC CANTOR
Brokerage Specialist
+1 314 640 1722
eric.cantor@cushwake.com

225 NE Mizner Boulevard, Suite 300
Boca Raton, Florida 33432

+1 954 771 0800
cushmanwakefield.com