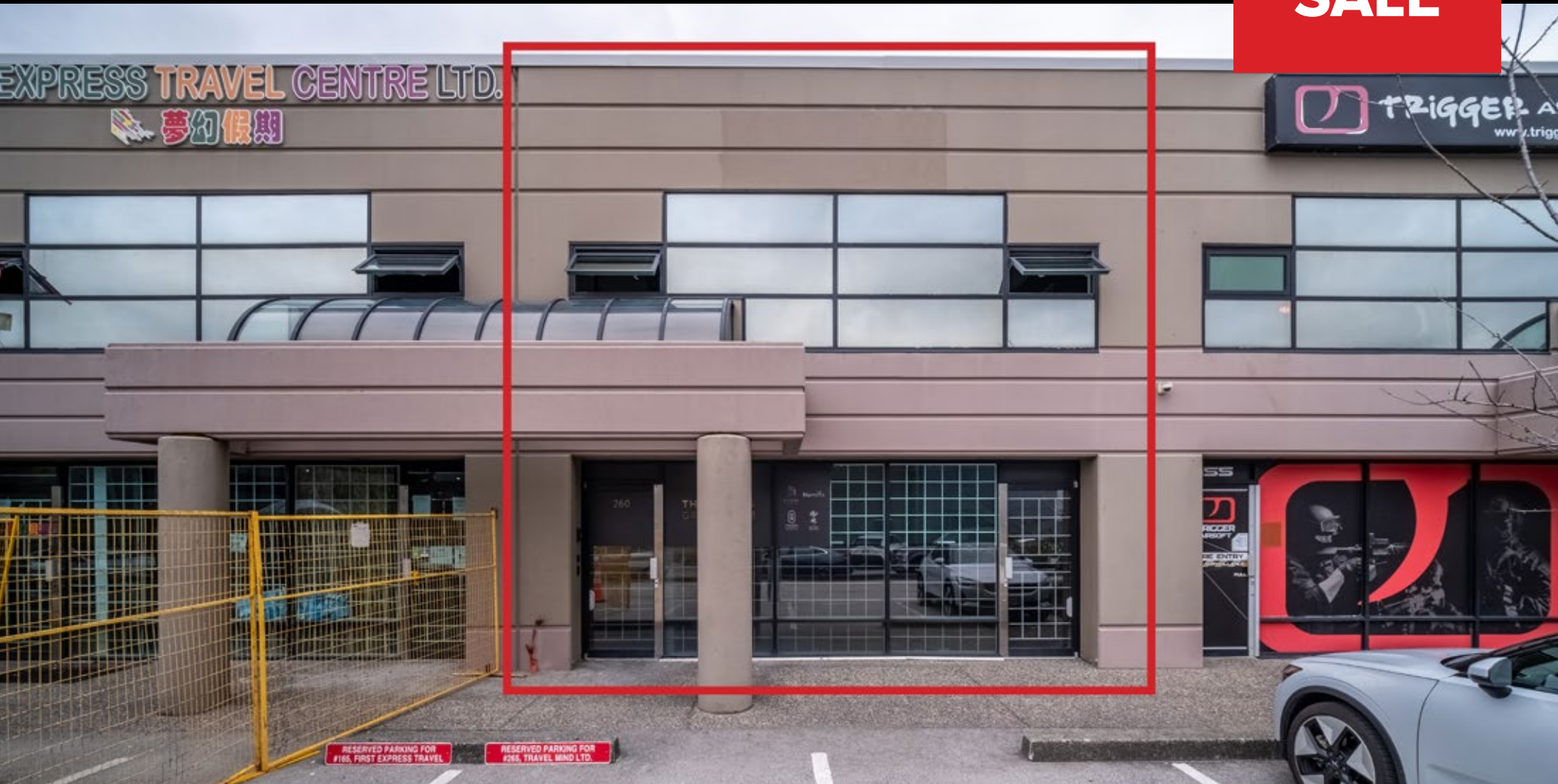


**160 - 13500 MAYCREST WAY, RICHMOND**

GROUND AND SECOND FLOOR INDUSTRIAL UNIT WITH ABILITY TO BE LEASED SEPARATELY

**FOR  
LEASE/  
SALE**



**WILLIAM | WRIGHT**

**MATTHEW HO**

PERSONAL REAL ESTATE CORPORATION  
matthew.ho@williamwright.ca

604.428.5255

**STEVEN LAM**

PERSONAL REAL ESTATE CORPORATION  
steven@williamwright.ca

604.428.5255





## OVERVIEW






This 3,098 SF industrial unit offers a functional and flexible space for businesses, featuring a 1,875 SF warehouse area with up to 19' clear ceiling height and a 10x12 rear grade-loading door, as well as a 1,223 SF office space with a separate entrance on the second floor. The unit comes with 4 designated parking stalls and one loading stall at the rear. The office space has HVAC distribution, and the warehouse area includes racking for efficient storage.



The unit will be fully renovated upon completion of lease/sale, with new dry walls, T-bar ceilings, and flooring.



## PROPERTY HIGHLIGHTS

-  10'x12' rear grade loading
-  19' clear ceiling height
-  High end marble tiling in showroom
-  Efficient unit layout for optimal functionality
-  Separate warehouse/office entrance allowing the first and second floor to be leased individually

## SIZE BREAKDOWN

Warehouse: +/- 1,875 SQFT

Office: +/- 1,223 SQFT

Total: +/- 3,098 SQFT

## PARKING

5 Stalls

## ZONING

IB1

## YEAR BUILT

1992

## PROPERTY TAXES

\$13,413.19

## AVAILABILITY

Available Immediately

## PID

017-667-186

## LEGAL DESCRIPTION

STRATA LOT 12 SECTION 32 BLOCK 5 NORTH  
RANGE 5 WEST NEW WESTMINSTER DISTRICT  
STRATA PLAN LMS262 TOGETHER WITH AN  
INTEREST IN THE COMMON PROPERTY IN  
PROPORTION TO THE UNIT ENTITLEMENT OF  
THE STRATA LOT AS SHOWN ON FORM 1

## LEASE RATES

### BASIC RENT

\$23/FT

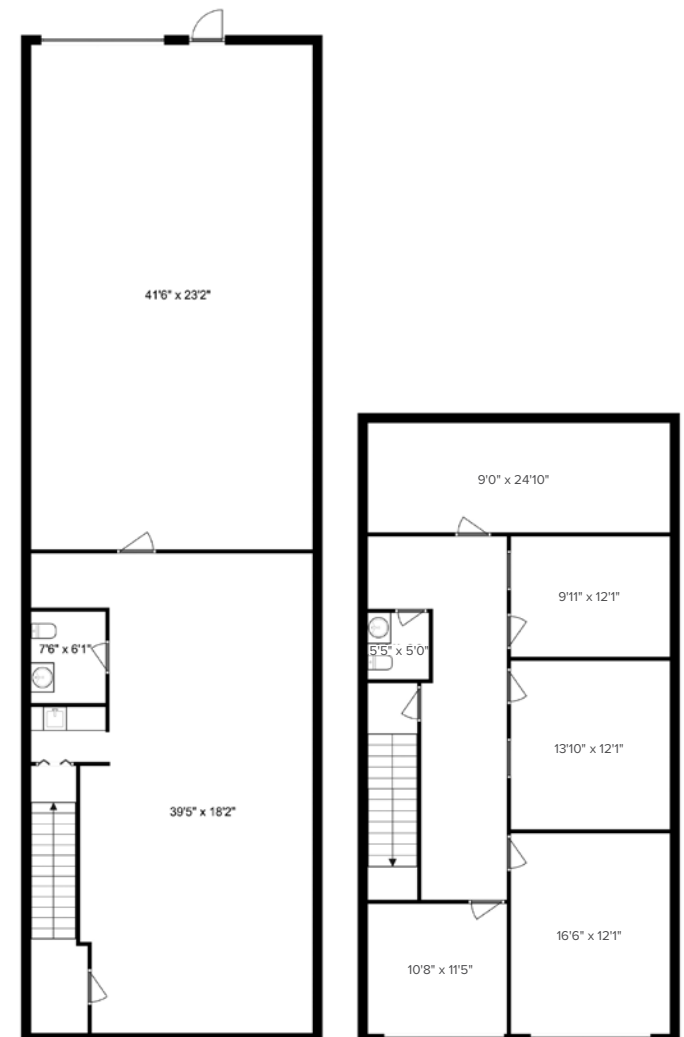
### ADDITIONAL RENT

\$7/FT

## SALE DETAILS

### PRICE

\$1,925,000 (\$621/sf)



Measurements are approximate. Tenant or Tenant's agent to verify if deemed important.



DRIVING DISTANCES	
YVR AIRPORT	15 MIN DRIVE
DOWNTOWN VANCOUVER	35 MIN DRIVE
USA/CANADA BORDER	40 MIN DRIVE
PORT METRO VANCOUVER	45 MIN DRIVE

## LOCATION

Conveniently nestled within off No. 6 Road corridor and easily accessible via the Hwy 91 exit, the subject property, offers seamless transportation links to Vancouver and beyond. This sought-after address not only ensures high visibility but also provides proximity to major transportation arteries, facilitating efficient connectivity. The subject strategic positioning within Richmond's thriving business hub renders it an ideal choice for establishing a presence in Metro Vancouver.

## FOR MORE INFORMATION CONTACT

**MATTHEW HO**  
 PERSONAL REAL ESTATE CORPORATION  
[matthew.ho@williamwright.ca](mailto:matthew.ho@williamwright.ca)  
 604.428.5255

**STEVEN LAM**  
 PERSONAL REAL ESTATE CORPORATION  
[steven@williamwright.ca](mailto:steven@williamwright.ca)  
 604.428.5255