

14230 JETPORT LOOP W  
FORT MYERS, FL 33913



FOR LEASE

INDUSTRIAL  
OFFICE/WAREHOUSE

LEASE RATE: **\$16.00 PSF NNN**

SIZE (SF): **9,959± SF**

LAND SIZE: **0.96± Acres**

OVERHEAD DOORS: **One (1) 10' x 12'**

CLEAR HEIGHT: **16'**

YEAR BUILT: **2000**

PARKING: **26 Spaces**

ZONING: **IL - Light Industrial** [Click Here for Uses](#)



## PROPERTY OVERVIEW

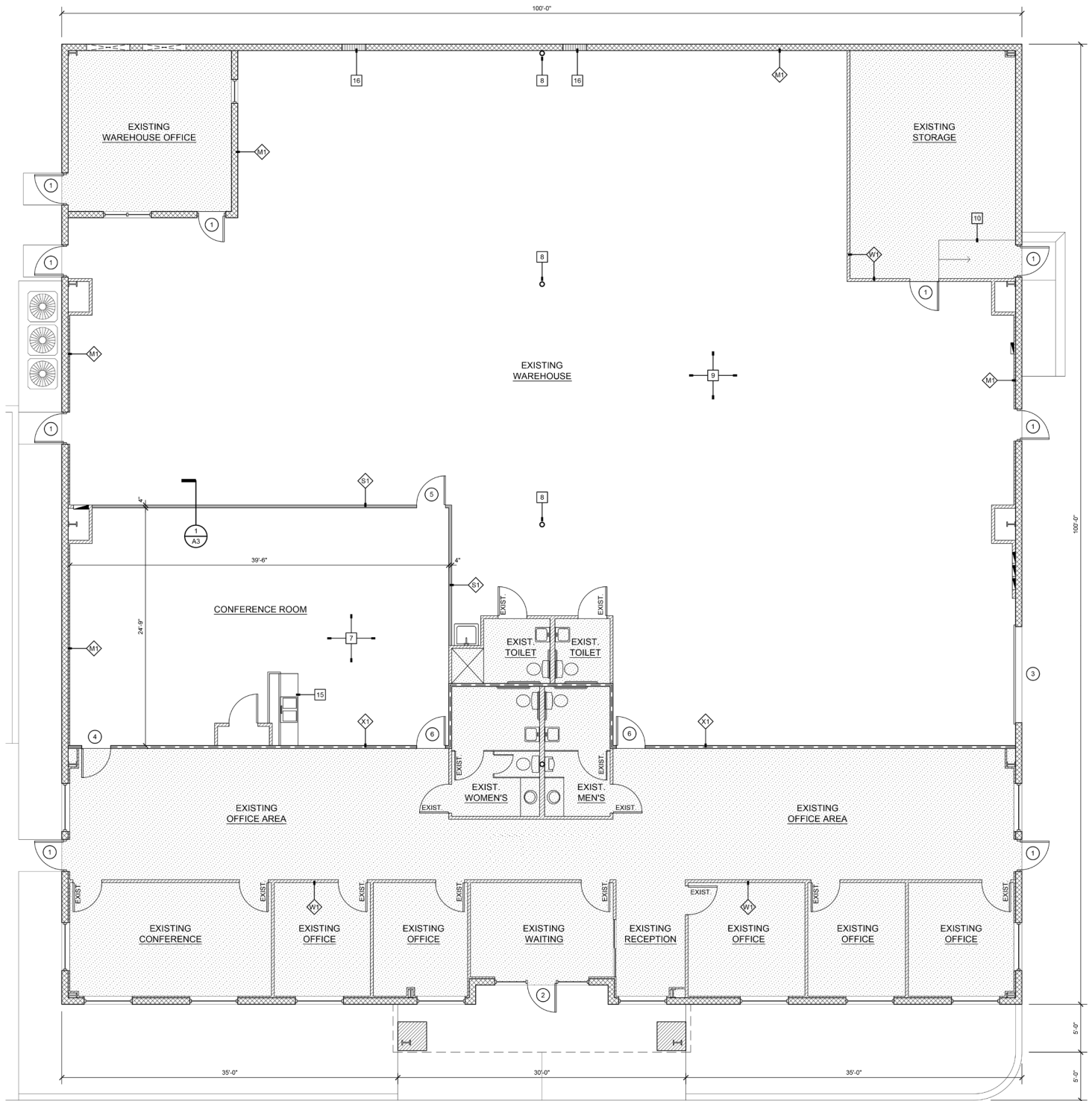
Rare opportunity to lease a freestanding industrial office/warehouse facility in one of Fort Myers' most established and supply-constrained industrial submarkets. Positioned within the Jetport corridor, the property offers excellent regional connectivity with immediate access to I-75, Southwest Florida International Airport, and the surrounding business base. The building is well suited for users seeking a functional combination of office and warehouse space in a highly accessible location with strong surrounding amenities and workforce access.

## PROPERTY FEATURES

- Freestanding 9,959± SF industrial office/warehouse building on 0.96± acres
- Located in the Jetport / Treeline corridor with immediate access to I-75 (Exit 131) and RSW Airport
- IL - Light Industrial zoning supports a range of industrial and business uses



# FLOOR PLAN

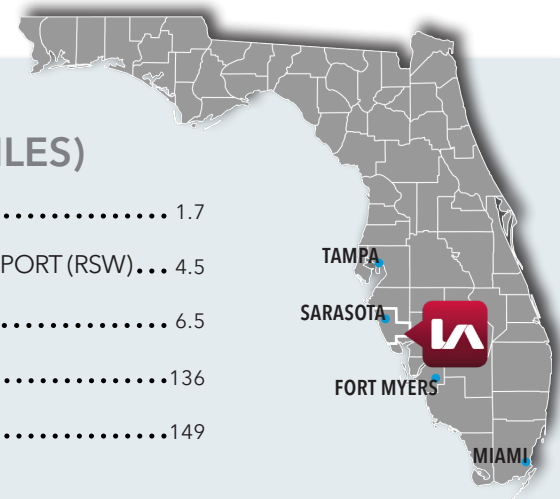




Located in one of Fort Myers' premier industrial submarkets, the property benefits from immediate proximity to Southwest Florida International Airport and direct I-75 access via Exit 131. This prime location supports efficient transportation, workforce accessibility, and convenient access to nearby hotels, restaurants, and retail services.

### DISTANCES (MILES)

I-75.....	1.7
SWFL INTERNATIONAL AIRPORT (RSW)...	4.5
US 41.....	6.5
TAMPA.....	136
MIAMI .....	149



**14230** JETPORT LOOP W  
FORT MYERS, FL 33913



**14230** JETPORT LOOP W  
FORT MYERS, FL 33913

**EXCLUSIVE LEASING CONTACTS**

**BRYAN FLORES**

Senior Vice President

**239.682.7444**

[bflores@lee-associates.com](mailto:bflores@lee-associates.com)

**CODY SHADLEY**

Senior Vice President

**239.398.7349**

[cshadley@lee-associates.com](mailto:cshadley@lee-associates.com)

All information furnished regarding property for sale, rental or financing is from sources deemed reliable, but no warranty or representation is made to the accuracy thereof and same is submitted to errors, omissions, change of price, rental or other conditions prior to sale, lease or financing or withdrawal without notice. No liability of any kind is to be imposed on the broker herein.

07/8/26