

Office/ Warehouse Condo

Located in Savaryn Business Centre

9048/50 - 22nd Avenue SW
Edmonton, Alberta

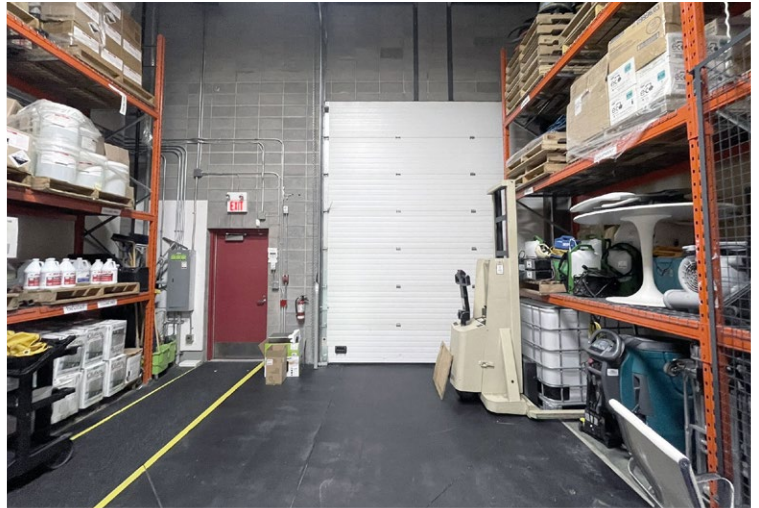
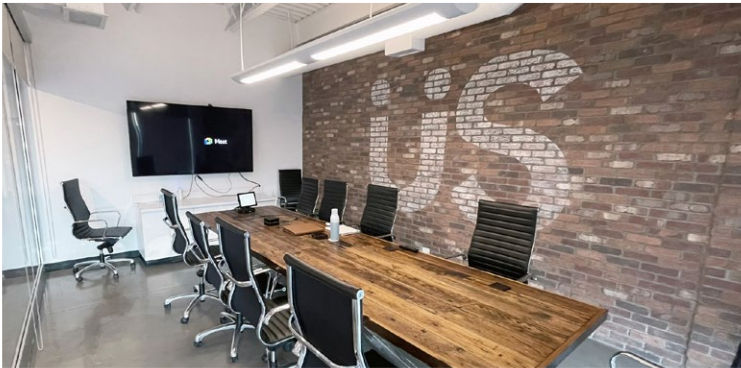
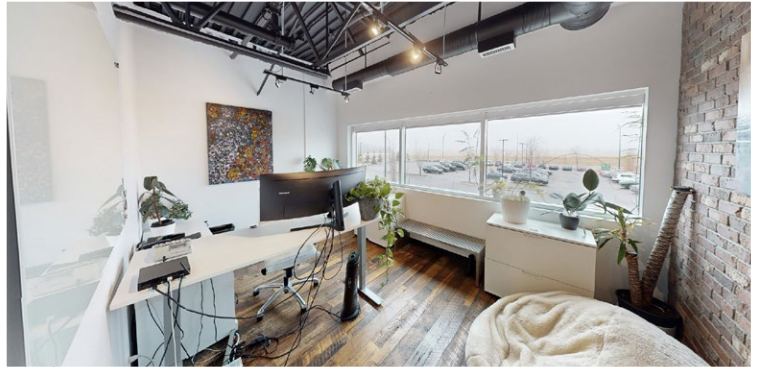
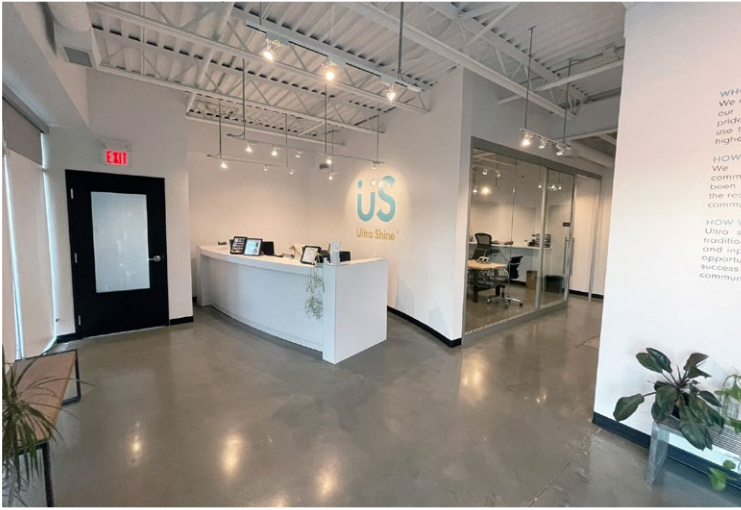
Price Reduced! | 5,073 SF with Grade Loading

 [Click here for virtual tour](#)



Office/Warehouse Condo

9048/50 - 22nd Avenue SW | Edmonton, Alberta



Office/Warehouse Condo

Located in Savaryn Business Centre

The property offers a prime location with convenient access to major roadways, features modern construction with high-quality finishes, and is a turnkey unit suitable for immediate operation. It combines high-end office space with warehouse facilities, which is a rare find in the Greater Edmonton market.

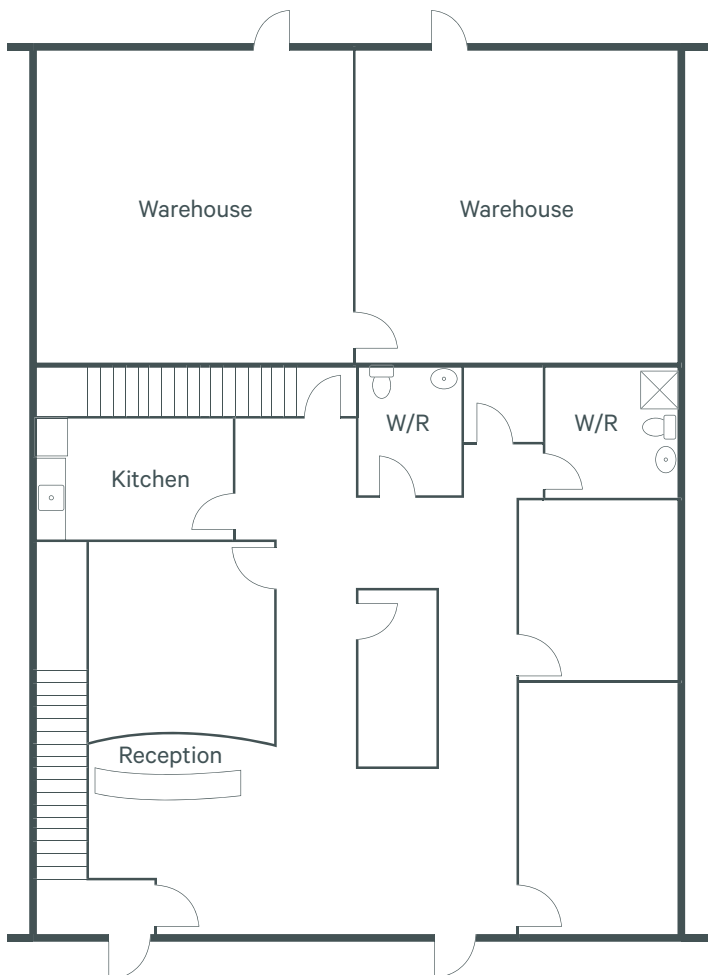
For Sale

Legal Address	Plan 1423550; Units 6 & 7	
Zoning	EIB - Ellerslie Industrial Business	
Year Built	2014	
Available Area	Main Floor	1,981 sq. ft.
	Second Floor Office	1,884 sq. ft.
	Warehouse	1,208 sq. ft.
	Total	5,073 sq. ft.
Grade Loading	(2) 12' x 14'	
Construction	Steel frame	
Ceiling Height	19'8" clear	
Power	225 amp, 3-phase, 4-wire <i>*To be confirmed</i>	

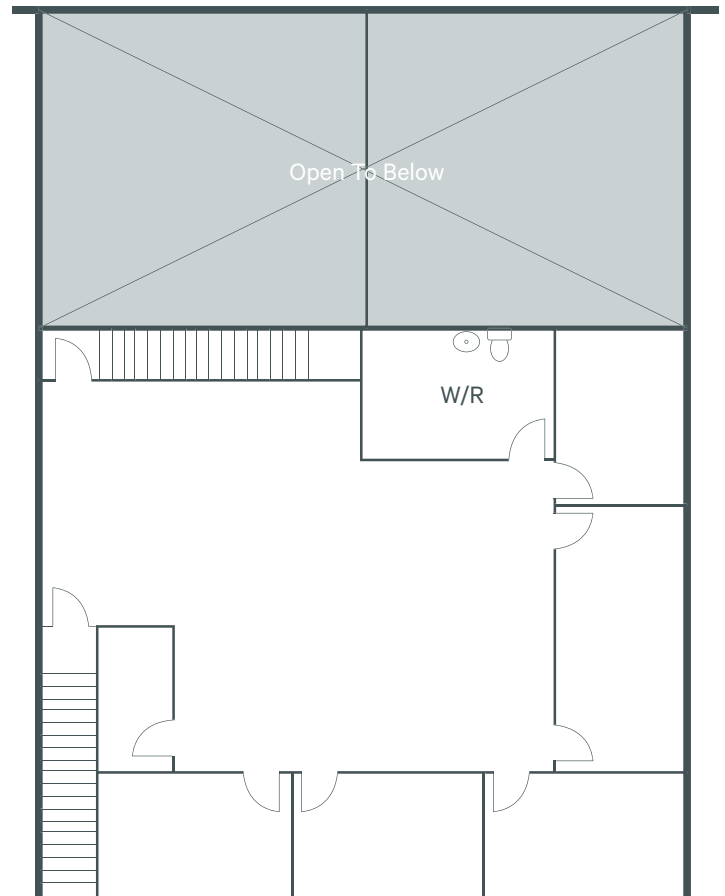
Heating	Radiant in warehouse Rooftop forced air in office
Office A/C	Yes
Lighting	Various
Sprinklers	Yes
Parking	Surface energized
Condo Fees (2025)	\$999.88 / month
Taxes (2025)	\$44,811.73
Sale Price	\$1,850,000.00 \$2,000,000.00
Available	60 days notice

 [Click here for virtual tour](#)

Main Floor



2nd Floor



Office/Warehouse Condo

9048/50 - 22nd Avenue SW | Edmonton, Alberta

For Sale



Contact Us

Kevin Hughes

Senior Vice President
+1 780 917 4634
kevin.hughes@cbre.com

Gregg Maimann

Senior Vice President
+1 780 917 4632
gregg.maimann@cbre.com

Trevor Schmidt

Vice President
+1 780 917 4641
trevor.schmidt@cbre.com

Jordan Adams

Vice President
+1 780 917 4645
jordan.adams@cbre.com

Braylon Klemchuk

Vice President
+1 780 229 4687
braylon.klemchuk@cbre.com

Jay Olmstead

Sales Representative
+1 780 554 1191
jay.olmstead@cbre.com

John Allan McKay

Associate
+1 780 915 5020
johnallan.mckay@cbre.com

*Lead Broker

Lucas Neumeyer

Associate
+1 780 850 2267
lucas.neumeyer@cbre.com

*(Sub) Tenant / Purchaser is responsible to confirm the electrical service to the premises / building and ensure it is sufficient for their intended use.

This disclaimer shall apply to CBRE Limited, Real Estate Brokerage, and to all other divisions of the Corporation; to include all employees and independent contractors ("CBRE"). All references to CBRE Limited herein shall be deemed to include CBRE, Inc. The information set out herein, including, without limitation, any projections, images, opinions, assumptions and estimates obtained from third parties (the "Information") has not been verified by CBRE, and CBRE does not represent, warrant or guarantee the accuracy, correctness and completeness of the Information. CBRE does not accept or assume any responsibility or liability, direct or consequential, for the Information or the recipient's reliance upon the Information. The recipient of the Information should take such steps as the recipient may deem necessary to verify the Information prior to placing any reliance upon the Information. The Information may change and any property described in the Information may be withdrawn from the market at any time without notice or obligation to the recipient from CBRE. CBRE and the CBRE logo are the service marks of CBRE Limited and/or its affiliated or related companies in other countries. All other marks displayed on this document are the property of their respective owners. All Rights Reserved.