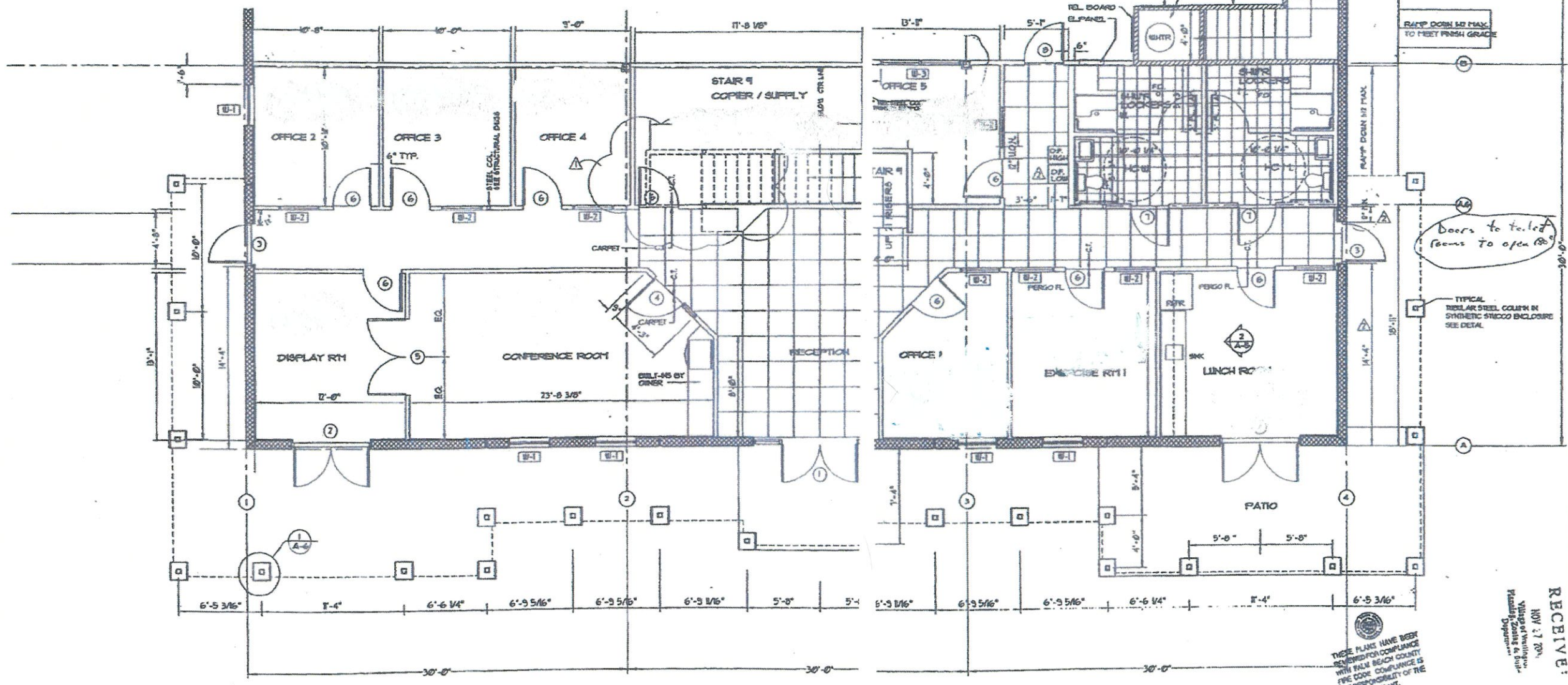


First Floor



ENLARGED PARTIAL FIRST FLOOR PLAN
SCALE: 1/4" = 1'-0"

COPY OF ORIG RECORD PLANS
VILLAGE OF WELLINGTON
BUILDING DEPARTMENT

LEGEND

- GYP BOARD PARTITIONS
- 1 HOUR FIRE RATED PARTITIONS
- TILT-UP CONCRETE WALL PANELS

THESE PLANS HAVE BEEN REVIEWED FOR COMPLIANCE WITH PALM BEACH COUNTY FIRE CODE. COMPLIANCE IS THE RESPONSIBILITY OF THE PERMIT APPLICANT.
DEC 11, 2009
DAVID ROY

RECEIVED:
NOV 27 2009
Village of Wellington
Planning Department

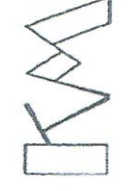
RECEIVED:
NOV 27 2009
Village of Wellington
Planning Department

PROJECT NO. 20P24

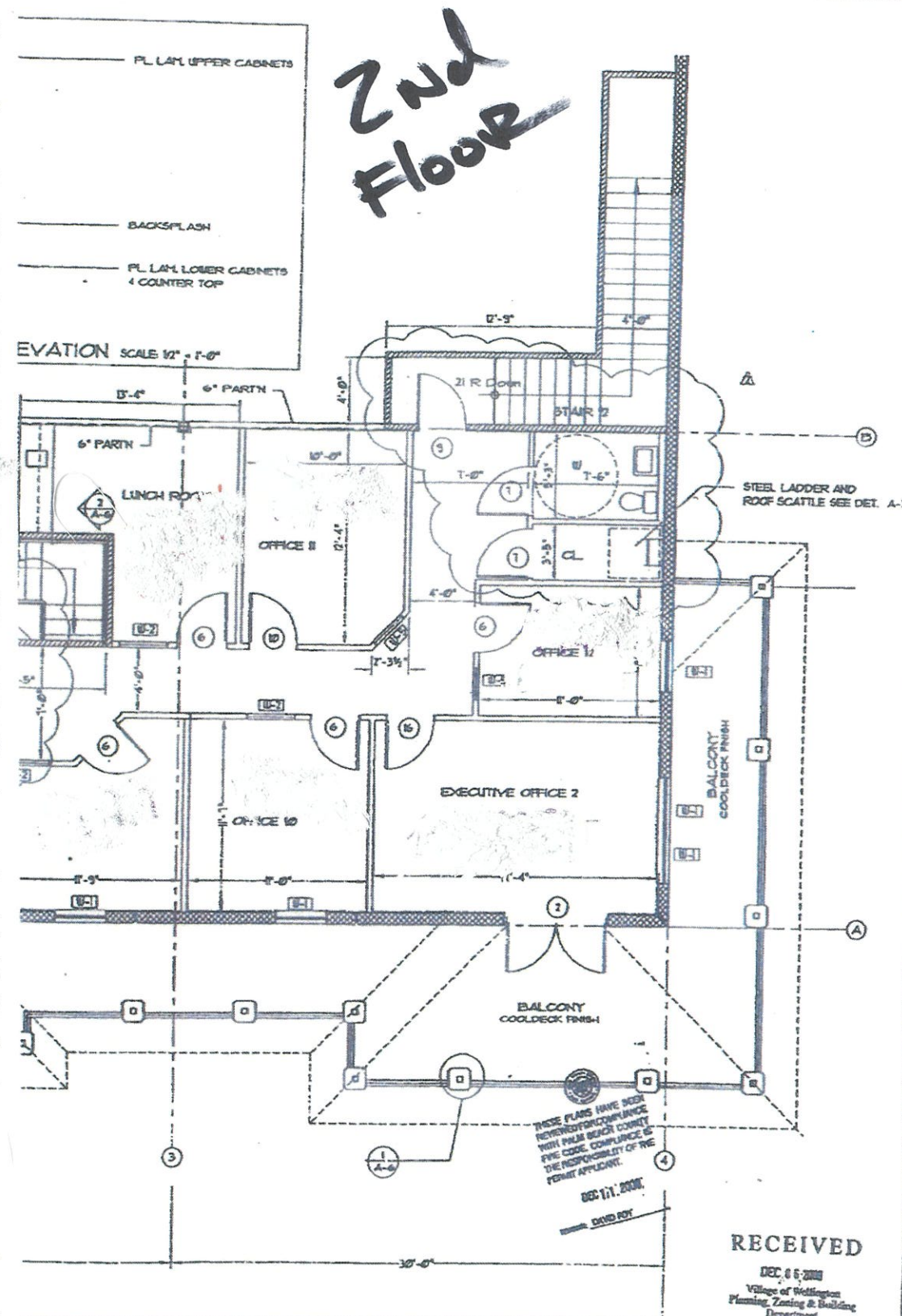
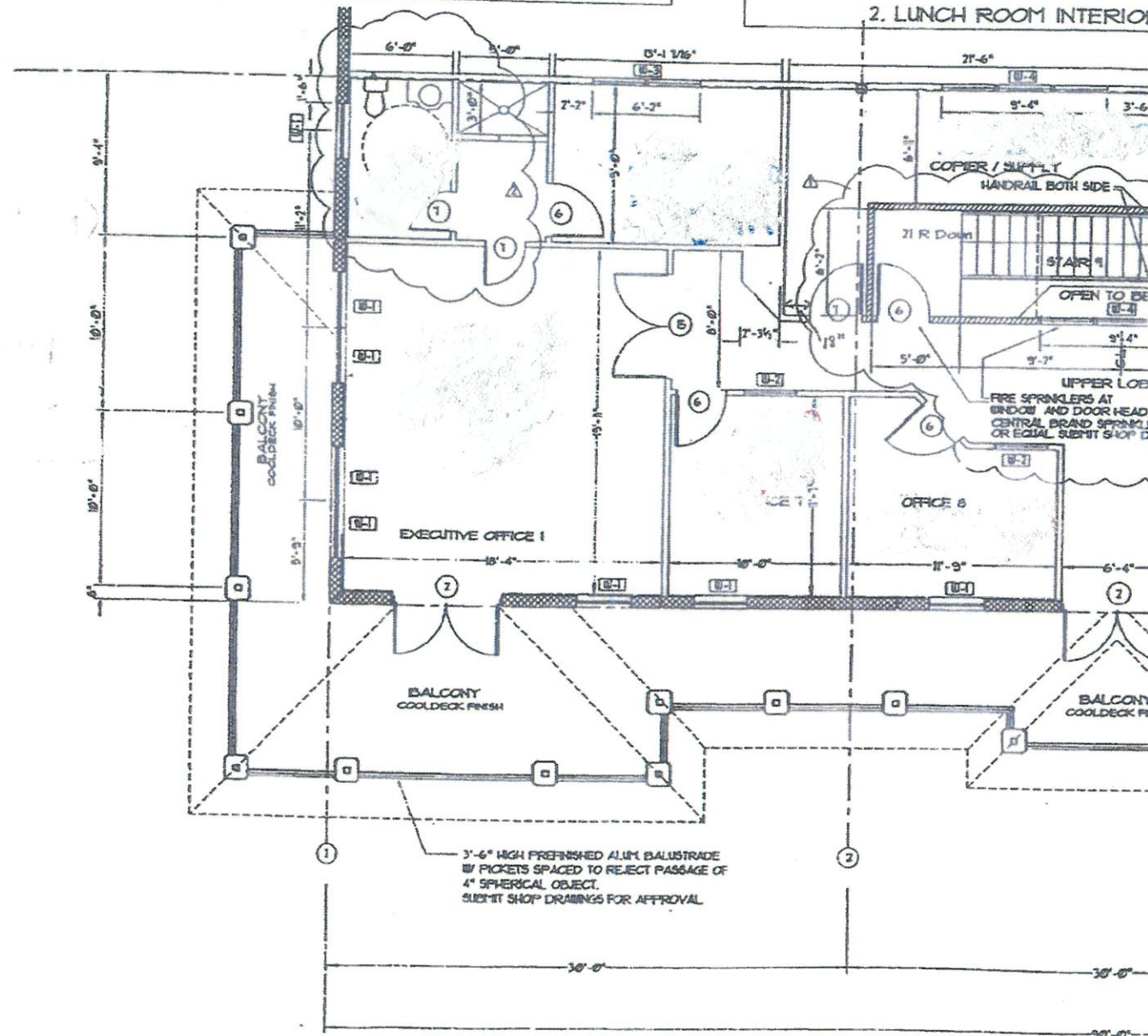
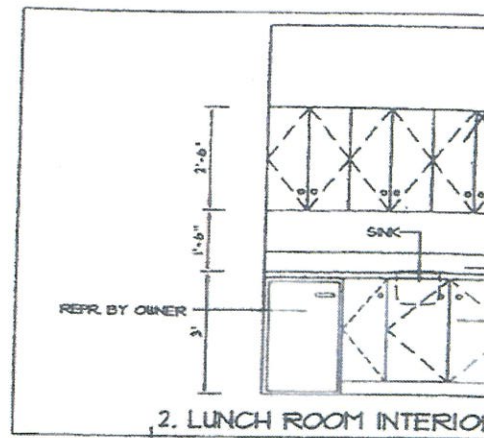
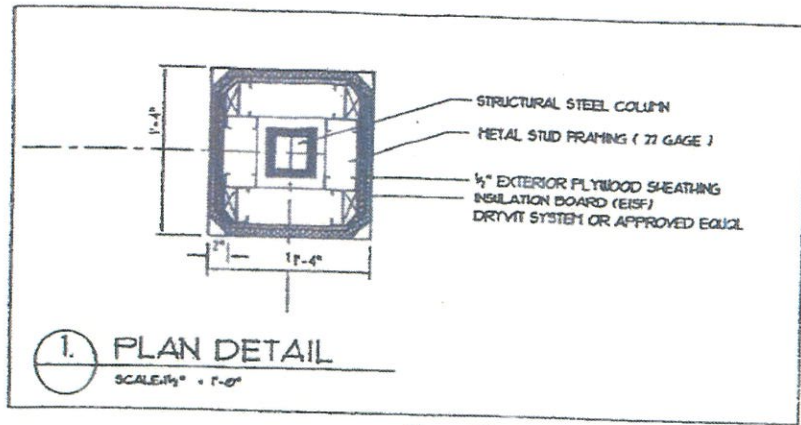
DATE: AUG. 12, 2009

BY: [Signature]

Kres Mihelich, Inc.
Architecture - Planning - Design
2888 N. COASTWAY BLVD. SUITE 200
BUDAPEST, FLORIDA 33428-1728
(813) 486-1111



ORBIT SPORTS BUILDING
WELLINGTON BUSINESS CENTER
VILLAGE OF WELLINGTON, FLORIDA
Prepared for: C.Y. GENERAL CONTRACTOR, INC.



ENLARGED MEZZANINE PLAN
SCALE 1/4" = 1'-0"

COPY OF ORIGINAL
VILLAGE OF WELINGTON
BUILDING DEPARTMENT

LEGEND

[Symbol]	GYP. BOARD PARTITIONS (4" NOMINAL, 1/2")
[Symbol]	1 HOUR FIRE RATED PARTITIONS
[Symbol]	TILT-UP CONCRETE WALL PANELS

THESE PLANS HAVE BEEN
REVIEWED FOR COMPLIANCE
WITH THE BUILDING CODE,
AND THE COUNTY ENGINEER
CERTIFIES THAT THE PLANS
COMPLY WITH THE REQUIREMENTS
OF THE BUILDING CODE.
DATE: 11/11/2008
BY: [Signature]

RECEIVED
DEC 8 2008
Village of Wellington
Planning, Zoning & Building
Department

Kres Mihelich, Inc.
Architecture - Planning - Design
2888 N. Ocean Drive, Suite 200
Boca Raton, FL 33433
Tel: 561-993-1111

ORBIT SPORTS BUILDING
WELINGTON BUSINESS CENTER
VILLAGE OF WELINGTON, FLORIDA
Prepared for: C.Y.O. GENERAL CONTRACTOR, INC.

REVISIONS No. DATE BY REVISIONS No. DATE BY
A-6 20P24