

FOR LEASE



2108 S. 54TH ST. STE. 1 | VILLAGE ON THE CREEKS, ROGERS, AR

Village on the Creeks is the largest garden office park in Northwest Arkansas. It houses office, retail, restaurant, and medical tenants and enhances quality of life by offering a walking trail on Razorback Greenway and a lake with beautiful views. This property offers 7-10 offices, 1 conference room, 1 storage closet, 2 restrooms, and a breakroom



2,613 SF



7-10 Offices, 2 Restrooms, Breakroom, Storage Closet, Conference Room



Direct access to Razorback Greenway and walking trails in a beautiful setting



Quick and easy access to Interstate 49

\$27.00 psf
+ Gas & Electric



PAT MORRISON
EXECUTIVE BROKER

P. 479-464-4292

C. 479-936-4200

PatMorrison@dvrxgroup.com

BO MORRISON
REALTOR®

P. 479-464-4292

C. 323-377-3528

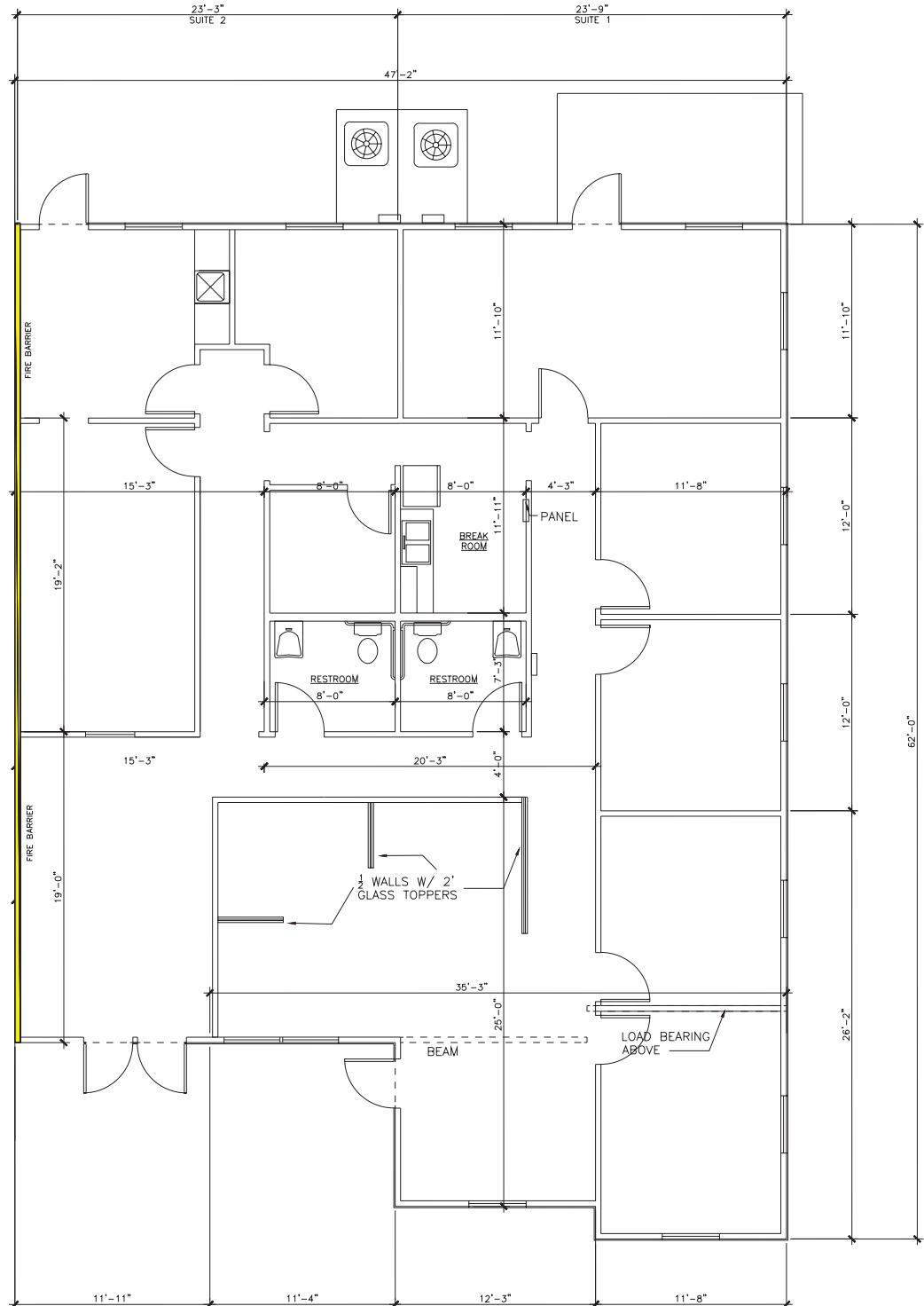
BoMorrison@dvrxgroup.com

FLOOR PLAN

2108 S. 54TH STREET

•2,613 SF

- 7-10 Offices
- Storage Closet
- 2 Restrooms
- Breakroom
- Conference Room



PAT MORRISON
 EXECUTIVE BROKER
 P. 479-464-4292
 C. 479-936-4200
 PatMorrison@dvrxgroup.com

BO MORRISON
 REALTOR®
 P. 479-464-4292
 C. 323-377-3528
 BoMorrison@dvrxgroup.com