

FOR SUBLEASE

±3,900 SF MEDICAL OFFICE

FULLY FURNISHED

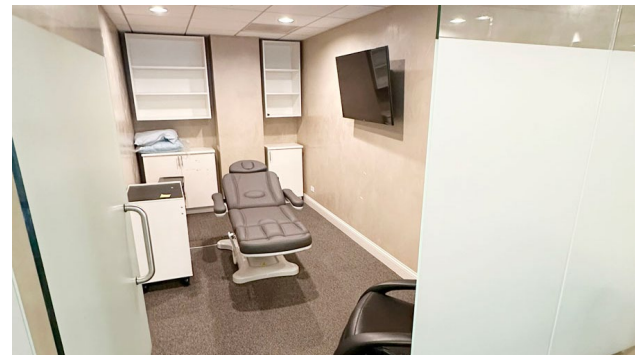
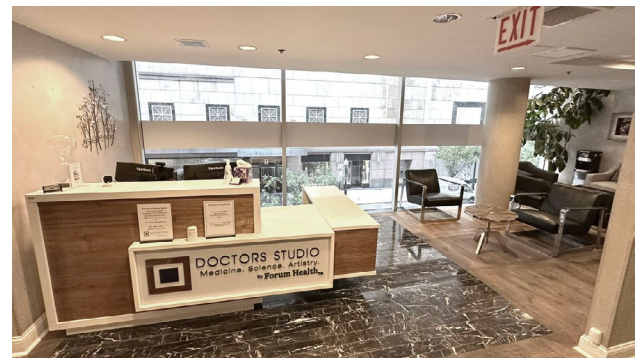


100 E Walton Street

Chicago, IL

PROPERTY HIGHLIGHTS

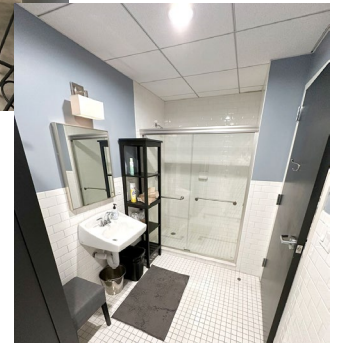
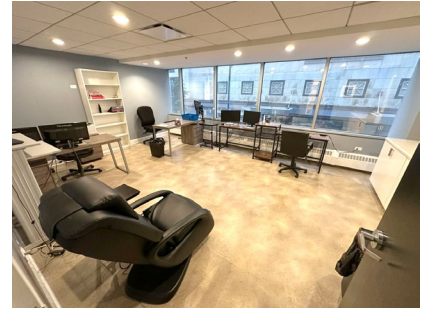
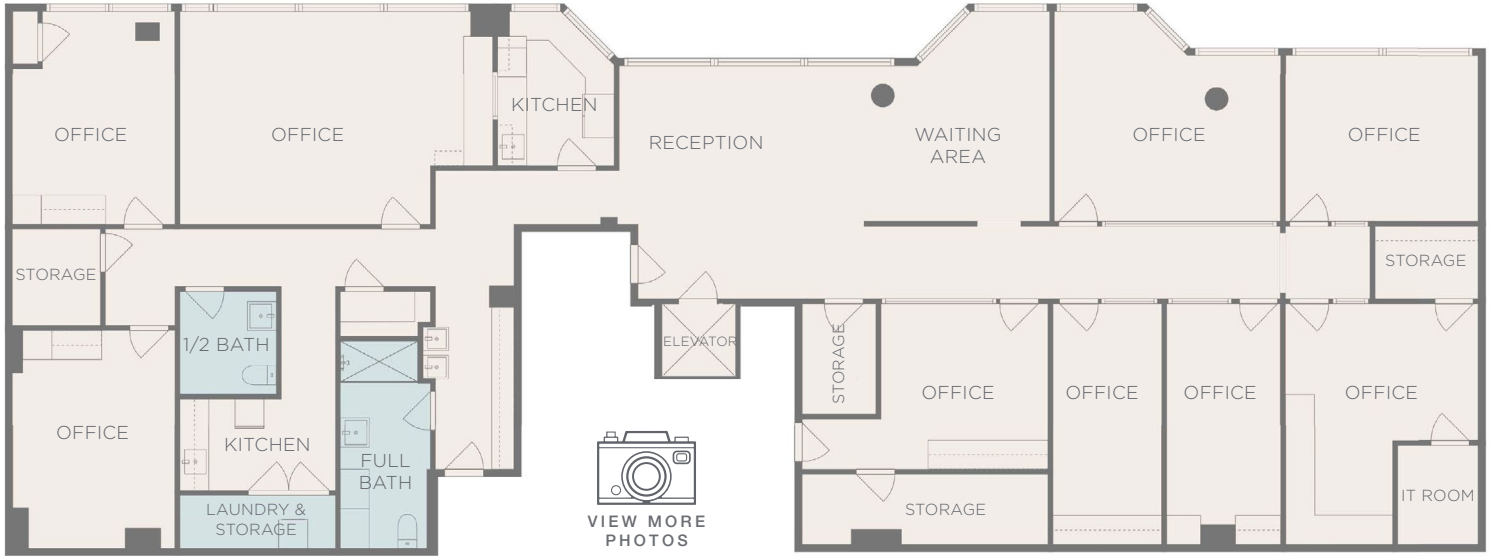
- Suite available on 2nd floor - Suite 200
- Sublease thru May 31, 2027
- Asking Rate: \$24.00 PSF Gross
- High-end finishes
- Located just west of N. Michigan Avenue, south of Oak Street
- Walton Street frontage with expansive window line
- Walkable to Lakefront Park and Oak Street Beach
- Minutes to I-90 interchanges



PATRICK KIEFER
+1 630 693 0670
pkiefer@hiffman.com

NAL Hiffman
Commercial Real Estate Services, Worldwide

100 E WALTON STREET, SUITE 200, CHICAGO, IL | ±3,900 SF FOR SUBLEASE



PATRICK KIEFER
 +1 630 693 0670
 pkiefer@hiffman.com

NAL Hiffman
 Commercial Real Estate Services, Worldwide

One Oakbrook Terrace
 Suite 400
 Oakbrook Terrace, Illinois 60181
 +1 630 932 1234

NO WARRANTY OR REPRESENTATION, EXPRESS OR IMPLIED, IS MADE AS TO THE ACCURACY OF THE INFORMATION CONTAINED HEREIN, AND THE SAME IS SUBMITTED SUBJECT TO ERRORS, OMISSIONS, CHANGE OF PRICE, RENTAL OR OTHER CONDITIONS, PRIOR SALE, LEASE OR FINANCING, OR WITHDRAWAL WITHOUT NOTICE, AND OF ANY SPECIAL LISTING CONDITIONS IMPOSED BY OUR PRINCIPALS NO WARRANTIES OR REPRESENTATIONS ARE MADE AS TO THE CONDITION OF THE PROPERTY OR ANY HAZARDS CONTAINED THEREIN ARE ANY TO BE IMPLIED.

hiffman.com