

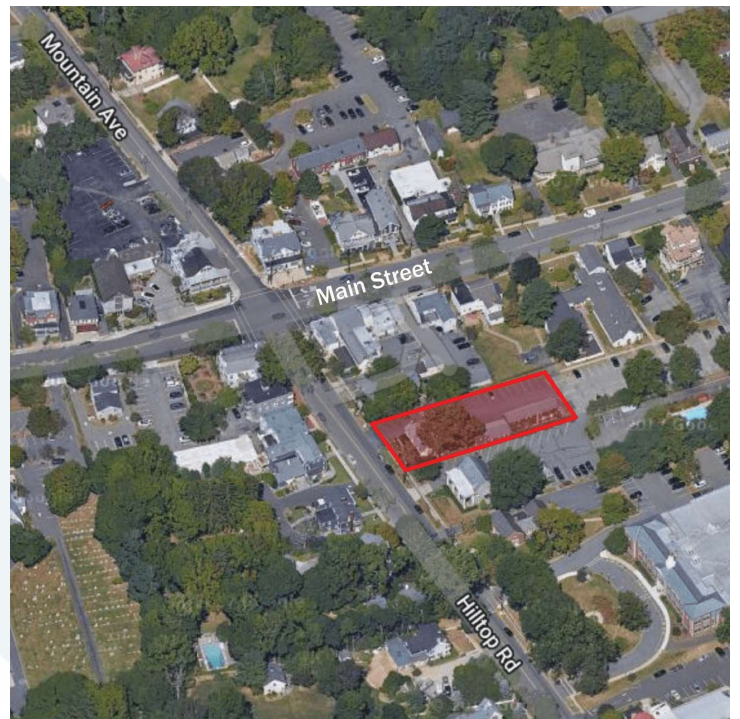
6 Hilltop Road | Mendham, NJ 07945

RETAIL/OFFICE SUITES FOR LEASE



PROPERTY HIGHLIGHTS

- **Available:** Suite 2 (1,024 SF)
Main Building (1,300 SF; divisible to 650 SF)
- **Block:** 1501, **Lot:** 41
- **Zoning:** Historic Business District
- **Utilities:** Tenants pay all utilities
- **RE Taxes:** Included in rent
- **Parking:** 21 on-site spaces adjacent to a municipal lot
- One bathroom per suite
- **Lease Rates:** Suite 2: \$2,100/month
(gross plus utilities) Main: \$2,600/month
- **Location:** Just south of the Main Street intersection in downtown Mendham



SARA SOLIMAN
Sales & Leasing Associate
908.360.8051
ssoliman@kislakrealty.com

Kislak Commercial Real Estate Services, Inc.
100 Woodbridge Center Drive
Woodbridge, NJ 07095
908.360.8050 | kislakrealty.com

6 Hilltop Road | Mendham, NJ 07945

SUITE 2



SARA SOLIMAN
Sales & Leasing Associate
908.360.8051
ssoliman@kislakrealty.com

Kislak Commercial Real Estate Services, Inc.
100 Woodbridge Center Drive
Woodbridge, NJ 07095
908.360.8050 | kislakrealty.com

6 Hilltop Road | Mendham, NJ 07945

MAIN BUILDING

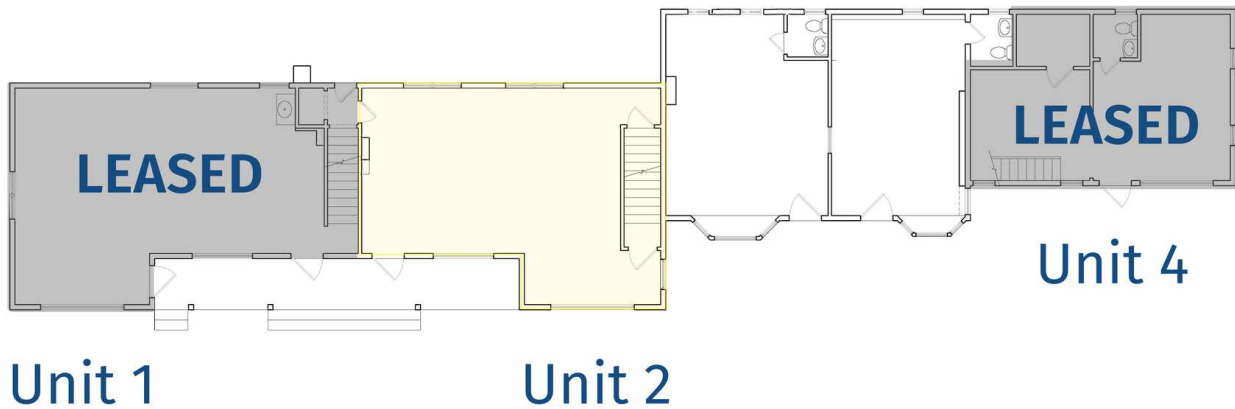


SARA SOLIMAN
Sales & Leasing Associate
908.360.8051
ssoliman@kislakrealty.com

Kislak Commercial Real Estate Services, Inc.
100 Woodbridge Center Drive
Woodbridge, NJ 07095
908.360.8050 | kislakrealty.com

6 Hilltop Road | Mendham, NJ 07945

FLOOR PLANS | 1ST FLOOR



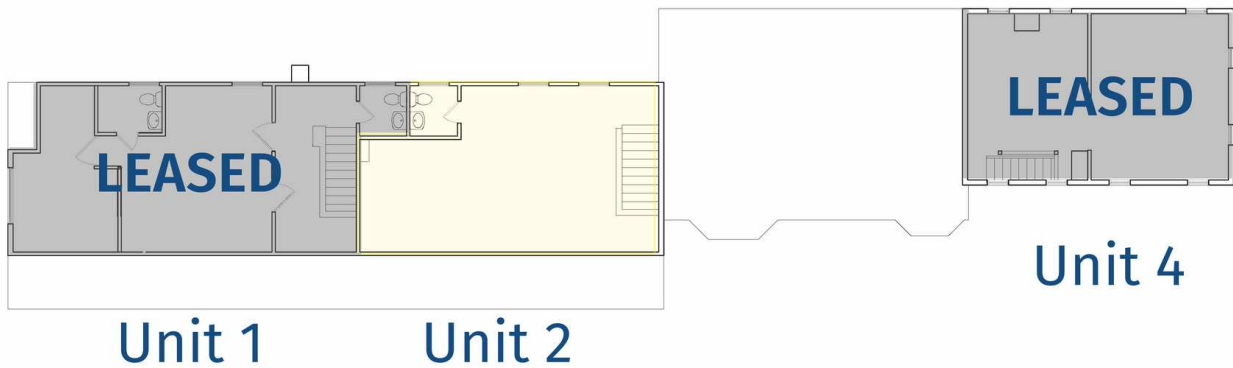
6 Hilltop Lane Mendham
1st Floor Plan

SARA SOLIMAN
Sales & Leasing Associate
908.360.8051
ssoliman@kislakrealty.com

Kislak Commercial Real Estate Services, Inc.
100 Woodbridge Center Drive
Woodbridge, NJ 07095
908.360.8050 | kislakrealty.com

6 Hilltop Road | Mendham, NJ 07945

FLOOR PLANS | 2ND FLOOR



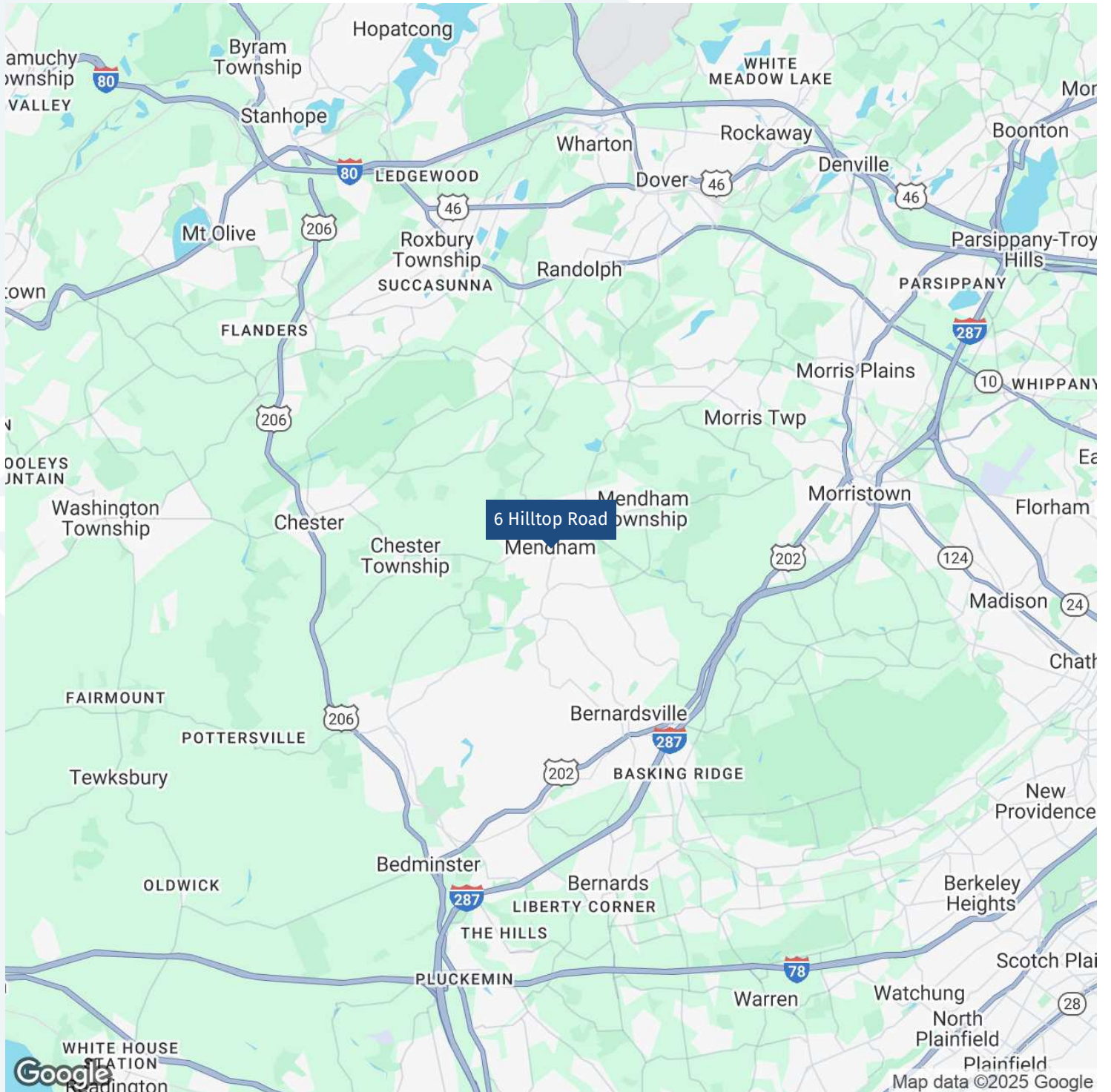
6 Hilltop Lane Mendham
2nd Floor Plan

SARA SOLIMAN
Sales & Leasing Associate
908.360.8051
ssoliman@kislakrealty.com

Kislak Commercial Real Estate Services, Inc.
100 Woodbridge Center Drive
Woodbridge, NJ 07095
908.360.8050 | kislakrealty.com

6 Hilltop Road | Mendham, NJ 07945

LOCATION MAP

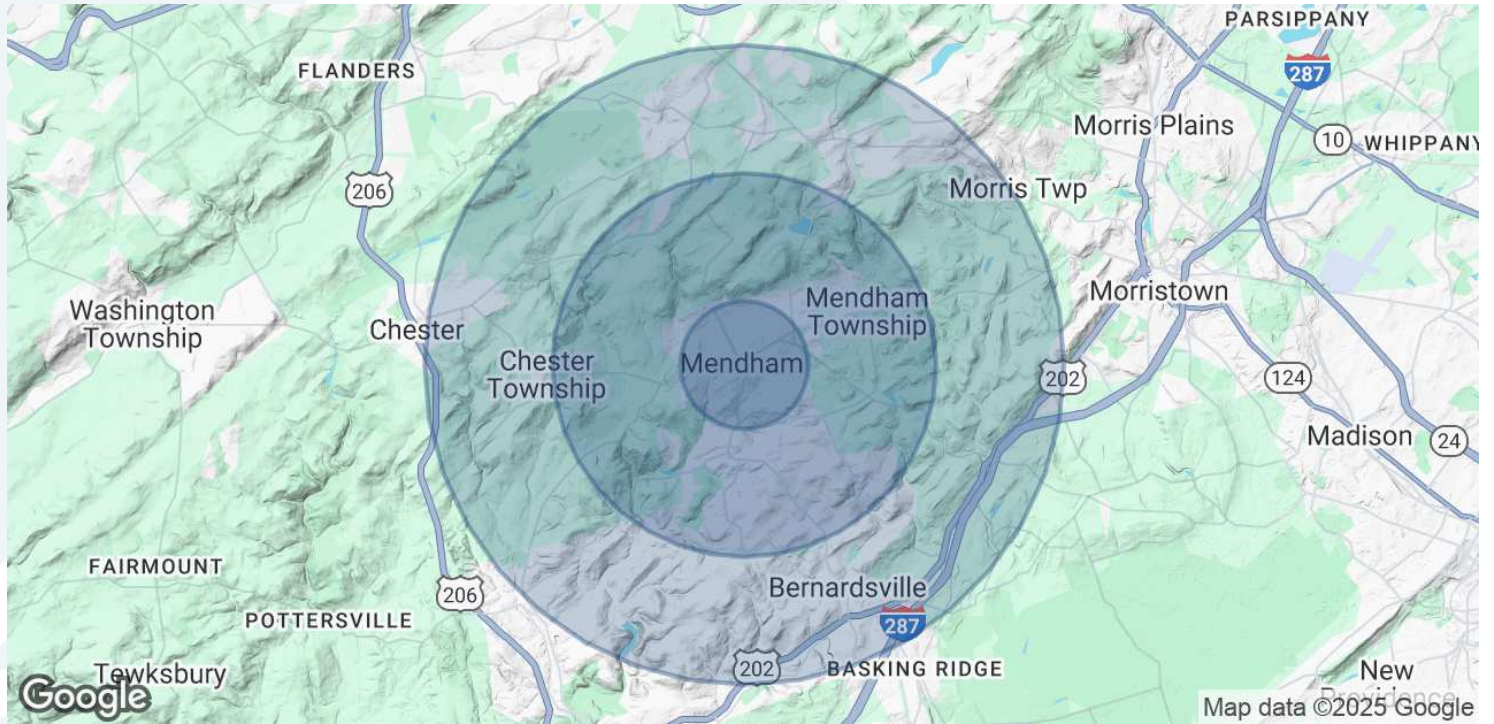


SARA SOLIMAN
Sales & Leasing Associate
908.360.8051
ssoliman@kislakrealty.com

Kislak Commercial Real Estate Services, Inc.
100 Woodbridge Center Drive
Woodbridge, NJ 07095
908.360.8050 | kislakrealty.com

6 Hilltop Road | Mendham, NJ 07945

DEMOGRAPHICS MAP & REPORT



POPULATION	1 MILE	3 MILES	5 MILES
Total Population	3,713	12,899	40,316
Average Age	45	43	42
Average Age (Male)	43	42	41
Average Age (Female)	47	44	43
HOUSEHOLDS & INCOME	1 MILE	3 MILES	5 MILES
Total Households	1,321	4,397	13,732
# of Persons per HH	2.8	2.9	2.9
Average HH Income	\$270,631	\$286,252	\$276,543
Average House Value	\$966,829	\$1,069,196	\$937,153

Demographics data derived from AlphaMap

SARA SOLIMAN
Sales & Leasing Associate
908.360.8051
ssoliman@kislakrealty.com

Kislak Commercial Real Estate Services, Inc.
100 Woodbridge Center Drive
Woodbridge, NJ 07095
908.360.8050 | kislakrealty.com