



Space Profile for

Unit: #21

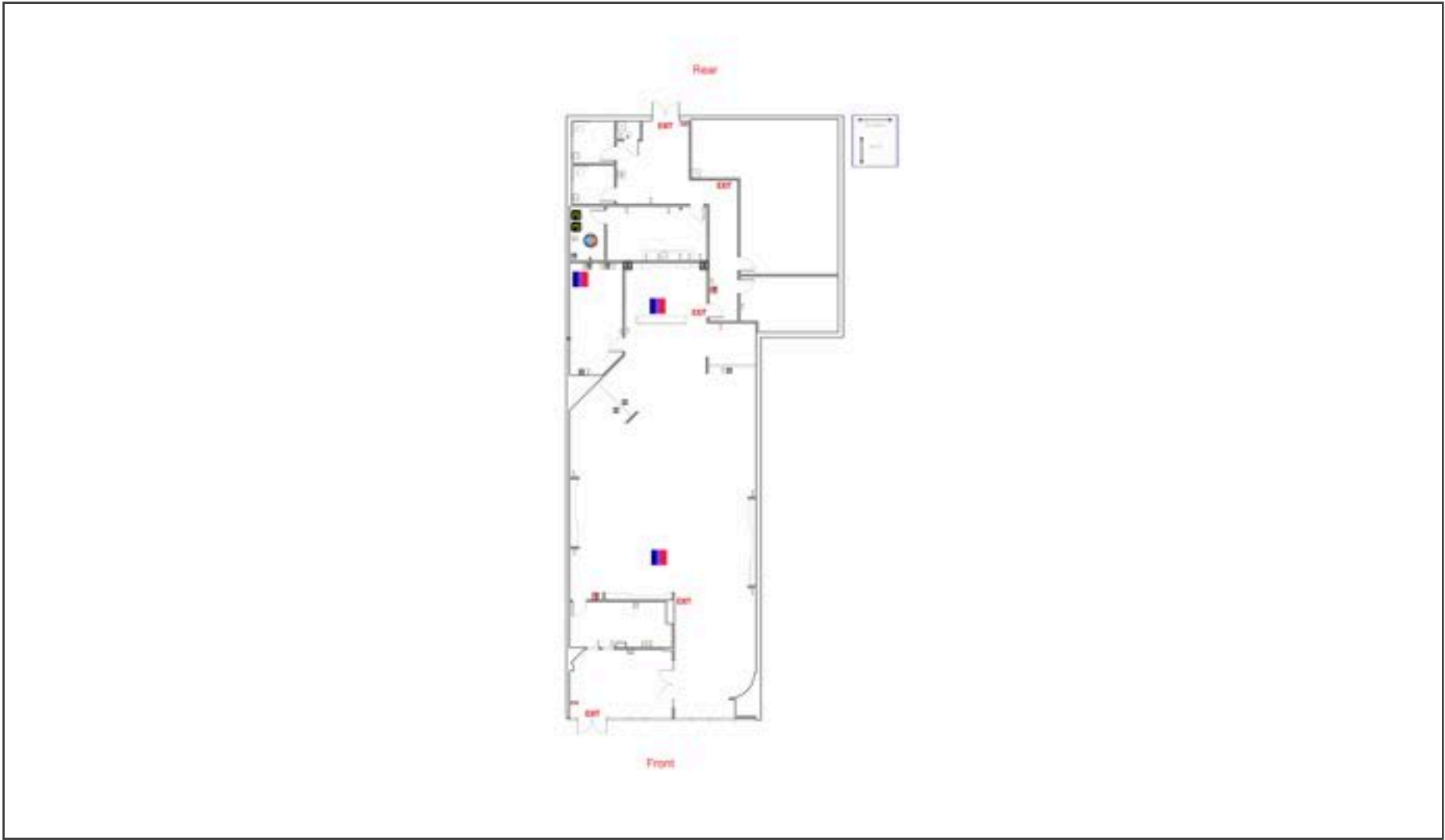
Area: 5761 sq ft

Address

*2400-2590 US Highway 30 & 316-
350 Douglas Road
Oswego, IL 60543*

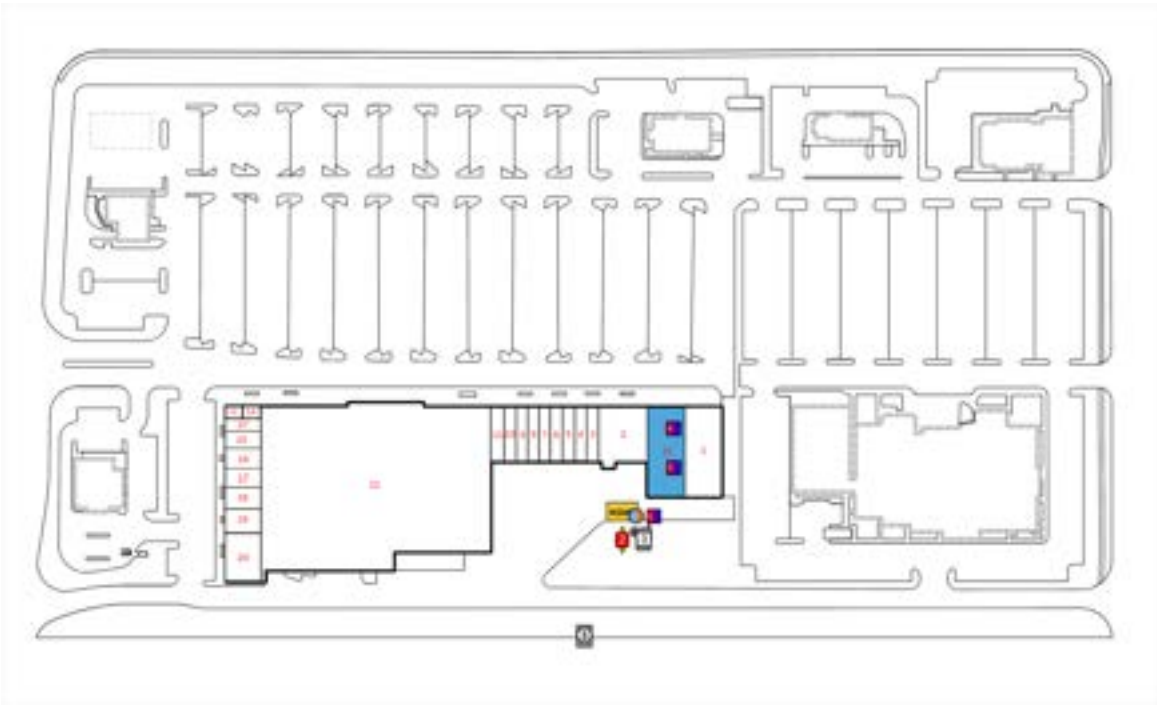


*4300 West Cypress St., Suite 160
Tampa, FL, 33607*



Legend

	Breaker Panel		Fire Extinguisher		Ceiling Fan w/ Light		Fire Sprinkler
	Circular Column		Fire Alarm Pulldown		Rectangular Column		Pocket Door
	Appliance Outlet		Glass Door		Refrigerator		Track Lighting
	Fire Alarm		Handicap Handrail		Roll-Up Door		2-Bulb Fluorescent Lighting
	Drinking Fountain		Roof Hatch		Sink		3-Bulb Fluorescent Lighting
	Door		HVAC Unit		Swing Door		4-Bulb Fluorescent Lighting
	Double Hung Door		Recessed Light		Toilet		Ceiling Air Vent
	Electrical Outlet		Staircase		Can Light		Air Diffuser
	Emergency Light		Water Heater		Urinal		Ceiling Fan w/o Light
	Exit Light		Telephone Panel		Thermostat		Air Handler
	Tankless Water Heater		Window Wall Opening		RJ 45		Fire Alarm Control Panel
	Step Down Transformer		Maintenance Sink		Window		Tenant Water Meter
	Disconnect		Sub Water Meter		House Gas Meter		Sub Gas Meter
	House Water Meter		Air Handler		House Electric Meter		Tenant Electric Meter
	Tenant Gas Meter		Vertical Fire Riser		Horizontal Fire Riser		
	Sub Electric Meter						



Space Overview

Overview	Actual Square Footage	Measured Depth of Space
	5761 SQFT	125' 0"

Thickness	Front Wall	Rear Wall	Left Wall	Right Wall
	1' 4"	1' 0"	0' 8"	1' 0"

Flooring	Concrete	Carpet	Tile	Other	Unit	Total
	868 SQFT	2783 SQFT	1118 SQFT	408 SQFT	5761 SQFT	5177 SQFT

Ceiling Information	Height From Floor To Ceiling	Height From Floor To Bottom Of Deck	Height From Floor To Bottom Of Joist
	Front: 10' 5" Back: 9' 0"	Front: 17' 10" Back: 16' 8"	Front: 15' 10" Back: 14' 3"

Ceiling Information Cont.	Clear Ceiling Height
	8' 11"

Mechanical

Air Handler	Reference	Manufacturer	Model	Serial	Tonnage	Year	Notes
	1	MITSUBISHI	MISSING LABEL	MISSING LABEL			

HVAC	Reference	Manufacturer	Model	Serial	Tonnage	Year	Notes
	1	YORK	DH090N15P2AAA3A	NAMM009750	7.5	2003	
	2	MITSUBISHI	PU18EK 1	LABEL FADED			
	3	YORK	DH090N15P2AAA3A	NAMM000344	7.5	2003	

Electric

Disconnect	Reference	Amps	Location	UL Number	Manufacturer	Handle or Breaker	Notes
	1	200	Rear Exterior	Not Listed	General Electric	Breaker	

Electric Meter	Reference	Meter #	Location	Amps	Notes
	1	230225680	Rear Exterior		

Not Present	Assets Not Present
	Step-Down Transformer

Service Panel	Reference	Amps	Service Type	Panel Type	Panel UL Number	Manufacturer	Location	Number of Circuit Breakers	Notes
	1	125	120/208	P1	Not Listed	Siemens	Electrical Room		
	2	250	120/208	P1	Not Listed	Siemens	Electrical Room		

IDPlans does not provide an Ampacity Report

Plumbing

House Water Meter	Reference	Meter #	Location	Meter Size	Notes
	1		61074605	Sprinkler Room	1 1/2 inch

No Sub Meter Present	Reference	Meter #	Verified Date	Notes
	1		No Sub Meter Present	

Not Present	Assets Not Present
	Backflows

Water Fountains	Number of Water Fountains	Location	Notes
	1	Receiving	

Water Heater	Reference	Manufacturer	Model	Serial	Gallons	Tank	Tankless	Water Line (in)	Location	Notes
	1		RHEEM	EGSP10	RR 0806603955	10	Yes	No	1/2"	Ceiling

Waste

Not Present	Assets Not Present
	Grease Trap
	Grease Container

Fire

Fire Extinguisher	Number of Fire Extinguishers	Notes
	2	

Not Present	Assets Not Present	
	Fire Alarm Control Panel	

Sprinkler Heads	Sprinkler Heads Present	Riser Located in Space	Additional Information
	60	No	

Gas

Gas Meter	Reference	Meter #	Location	Size	Notes
	1	2743109	Rear Exterior	1 1/2 inch	Utility company will not confirm the name on account.

Room

Restroom	Unit	Description
	Restroom 1	
Restroom 2		

Storefront 1

