



earth touch
 EarthTouch, Inc.
 3135 North Fairfield Road
 Layton, Utah 84041
 Tel: 801.771.2800

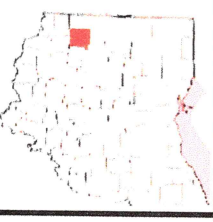
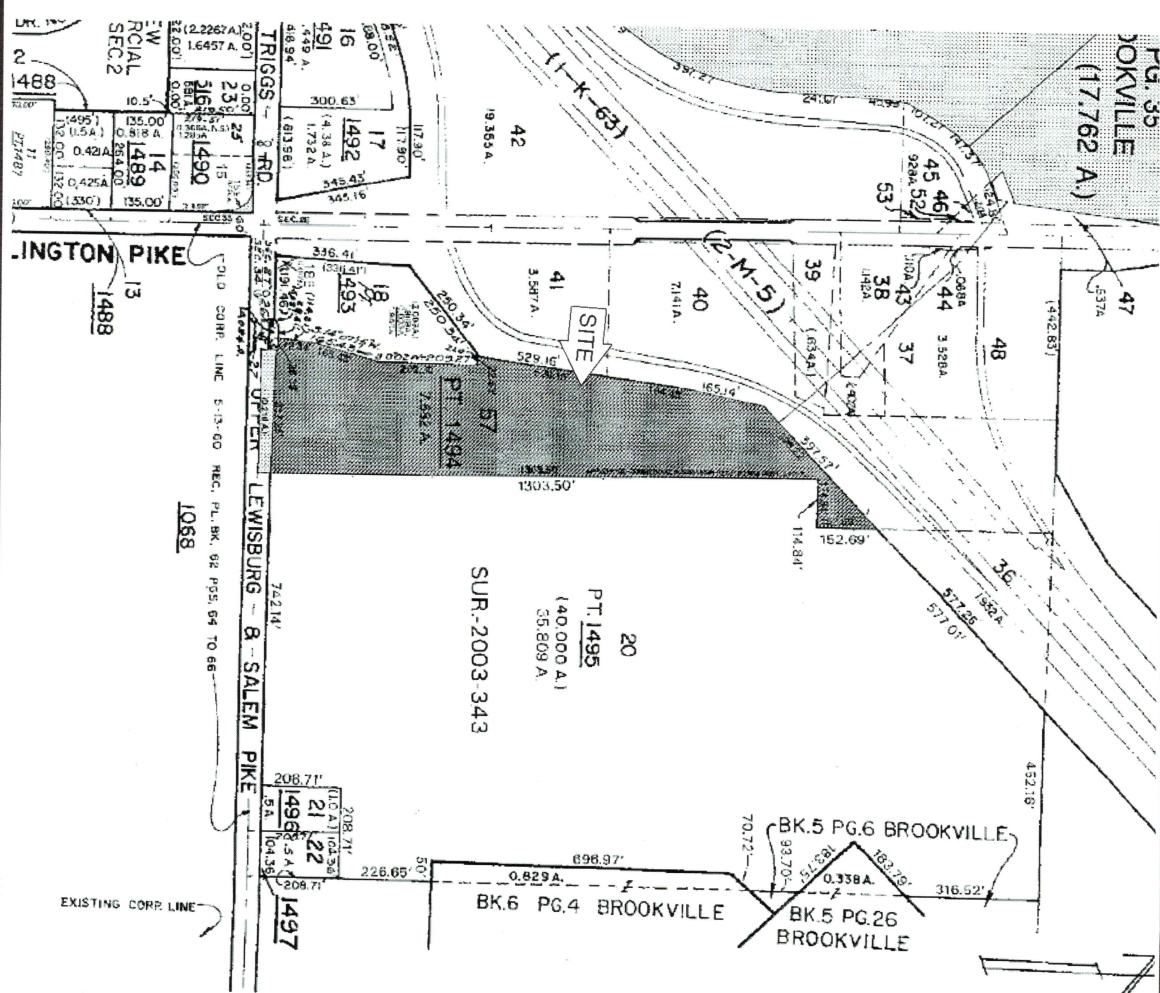


FIGURE 4
 Site Sketch
 Appplewood Log Homes
 530 Upper Lewisburg Salem Road
 Brookville, (Montgomery County), OH 45309

Figure: 4
 Append: Phase I Environmental Site Assessment
 Project: Zion-608-OH / Appplewood Log Homes
 Analyst: Sean Thal
 Inspected: 22-Feb-2011
 Prepared: 7-Mar-2011



earth touch
 www.earthtouch.com
 EarthTouch, Inc.
 3135 North Fairfield Road
 Layton, Utah 84041
 Tel: 801.771.2800

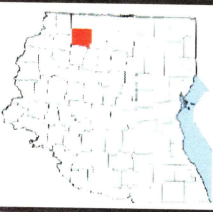
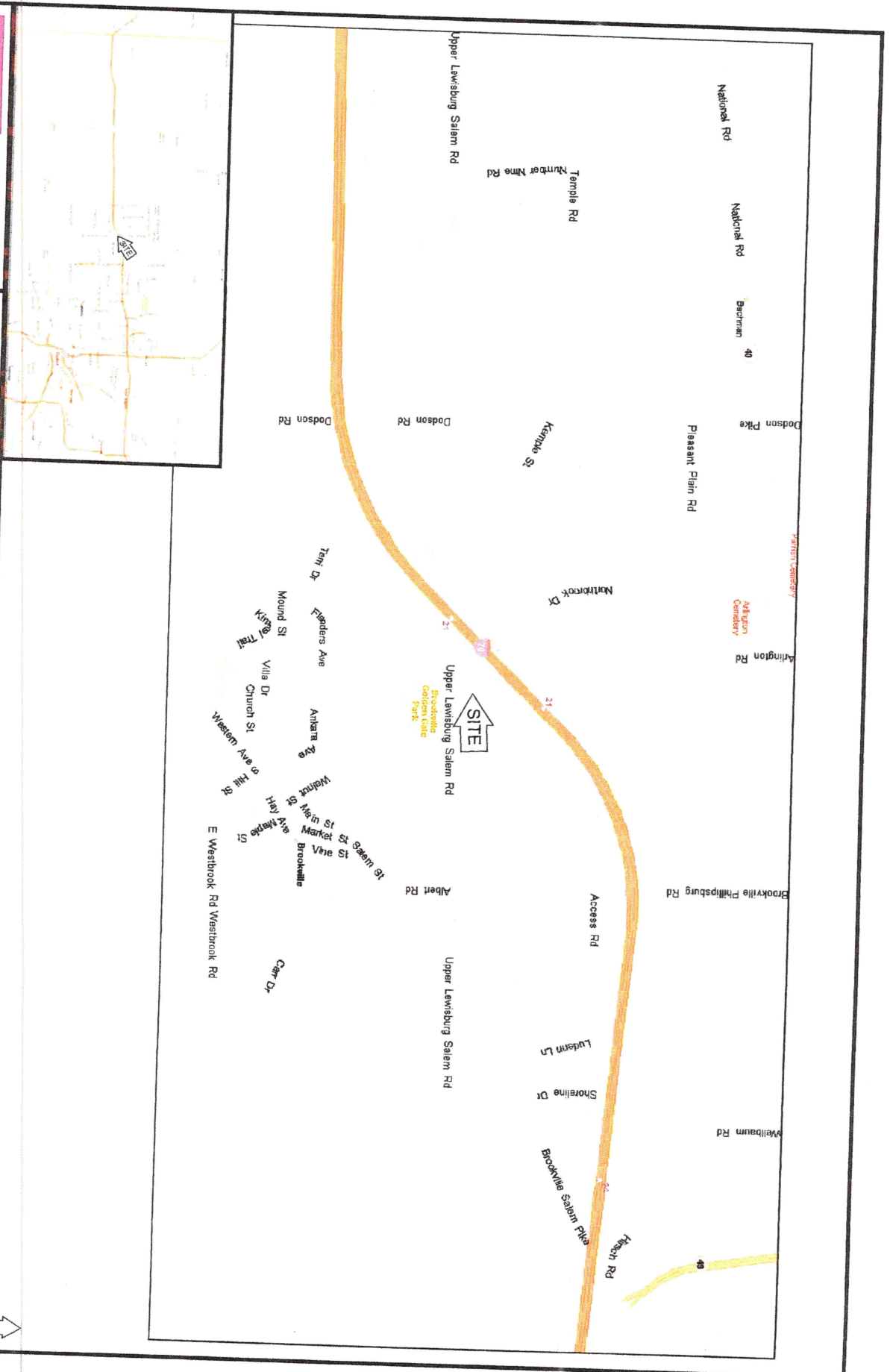


FIGURE 3
 Plat Map

Appplewood Log Homes
 530 Upper Lewisburg Salem Road
 Brookville, (Montgomery County), OH 45309

Figure: 3
 Append: Phase I Environmental Site Assessment
 Project: Zion-608-OH / Appplewood Log Homes
 Analyst: Sean Thal
 Source: Montgomery County Auditor Office



earthtouch inc
 www.earthtouchinc.com
 EarthTouch, Inc.
 3135 North Fairfield Road
 Layton, Utah 84041

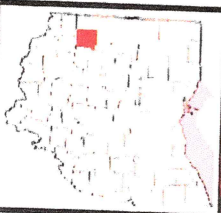


FIGURE 1
Site Location
 (Street Map)

Applewood Log Homes
 530 Upper Lewisburg Salem Road
 Brookville, (Montgomery County), OH 45309

Figure: 1
 Append: Phase I Environmental Site Assessment
 Project: Zion-608-OH / Applewood Log Homes
 Analyst: Sean Thal
 Source: MS Streets & Trips 2010 Edition
 Brookville, Ohio

