



## Auto Plaza

**\$699,000**

196 FEET OF FRONTAGE FACING PALM BEACH BLVD  
NOW BEING USED AS A CAR SALES LOCATION  
WITH BLACK TOP PARKING AND AN OFFICE  
BUILDING.

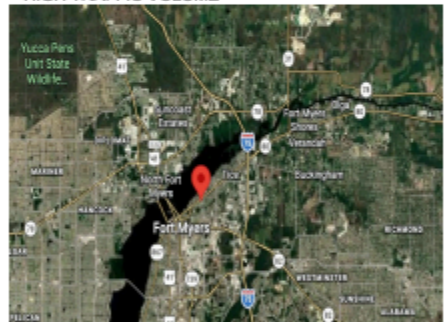
LOW PRICE per front foot. Massive exposure (rare  
on that corridor). Perfect for auto / display-heavy  
use, fully usable paved lot.

CI zoning (allows intensive commercial).

This commercial parcel is ideally positioned along  
highly trafficked Palm Beach Boulevard in Fort  
Myers, offering exceptional visibility and  
accessibility. The property features a rare 196 feet  
of frontage, providing outstanding exposure to  
steady daily traffic flow-making it well-suited for a  
variety of retail or automotive-related uses.

Currently operating as an automobile sales plaza,  
the site is fully improved with a blacktopped  
parking area that adjoins Terry Park.

196 FEET OF FRONTAGE ON PALM BEACH BLVD  
COMMERCIAL INTENSIVE ZONING HIGH TRAFFIC  
VOLUME 24000/TPD



## 3426 Palm Beach Blvd, Ft Myers

<b>Price:</b>	<b>\$699,000</b>
<b>Property Type:</b>	<b>Land</b>
<b>Property subtype:</b>	<b>Commercial</b>
<b>Proposed Use:</b>	<b>Commercial Retail</b>
<b>Sale Type:</b>	<b>Investment or Owner User</b>
<b>Total Lot Size:</b>	<b>0.22 acres</b>
<b>No. Lots:</b>	<b>1</b>
<b>Zoning Description:</b>	<b>CI</b>
<b>APN/Parcel ID:</b>	<b>07-44-25-P3-00125.0100</b>

**Joe Townsend**  
**239-821-0603**

[joe.townsend@cbrealty.com](mailto:joe.townsend@cbrealty.com)

