



FOR  
SUBLEASE



## PLUG AND PLAY HEADQUARTERS OPPORTUNITY

**Office Space: 15,138 RSF**

**25115 SW Parkway Avenue, Wilsonville, OR**

This property is a stand-alone 15,138 RSF plug and play opportunity with excellent natural light and freeway signage available. The Parkway Avenue sublease is part of a park-like campus and is available right now to new tenants for the first time in decades. The property boasts a wide mix of meeting rooms, private offices, exterior patio areas, and open work spaces.

While currently available as a sublease through July 2026, a direct lease could be made available.

**MCCOY DOERRIE, SIOR**  
Senior Vice President

503-523-7751

[mccoy@capacitycommercial.com](mailto:mccoy@capacitycommercial.com)

**DAVID ELLIS**  
Principal

503-517-9871

[dave@capacitycommercial.com](mailto:dave@capacitycommercial.com)



AVAILABILITY



PROPERTY DETAILS & AMENITIES	
Total SF	15,138 RSF
Year Built	1980
Parking	4.5:1,000 parking ratio
Term	Remaining term thru July 31, 2026
Available	Now
Signage	I-5 North & South facing
Rate	Call Broker for rates



**MCCOY DOERRIE, SIOR**  
Senior Vice President

503-523-7751

[mccoy@capacitycommercial.com](mailto:mccoy@capacitycommercial.com)

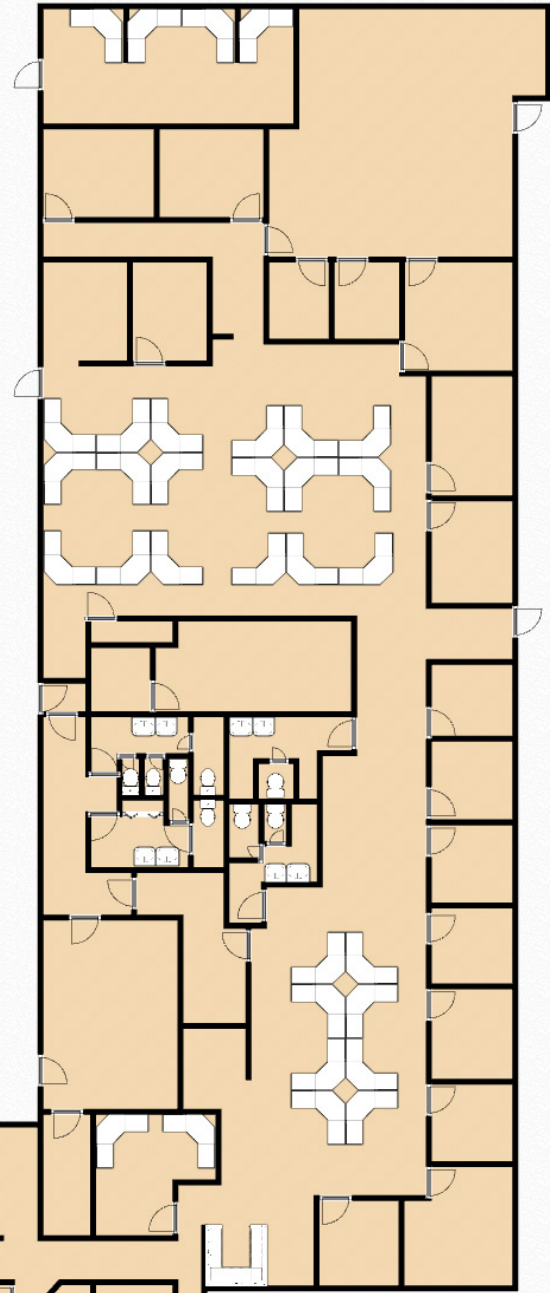
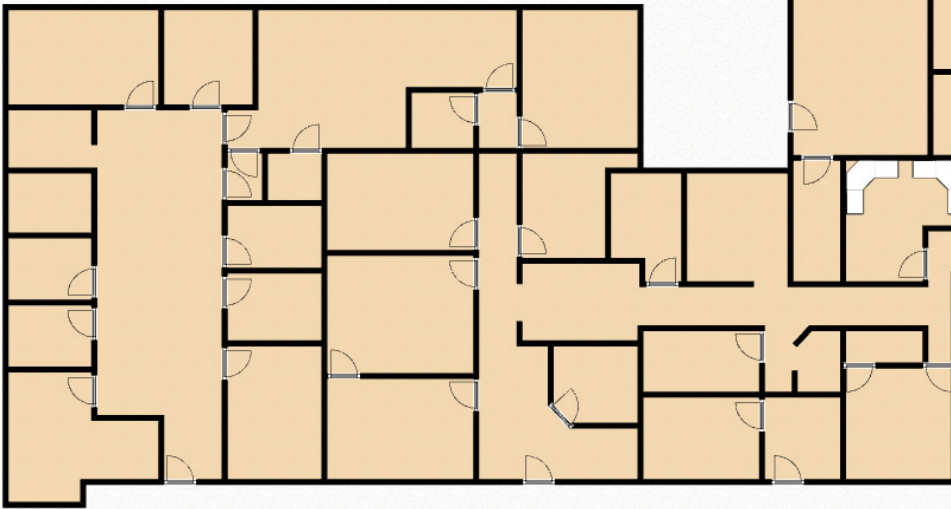
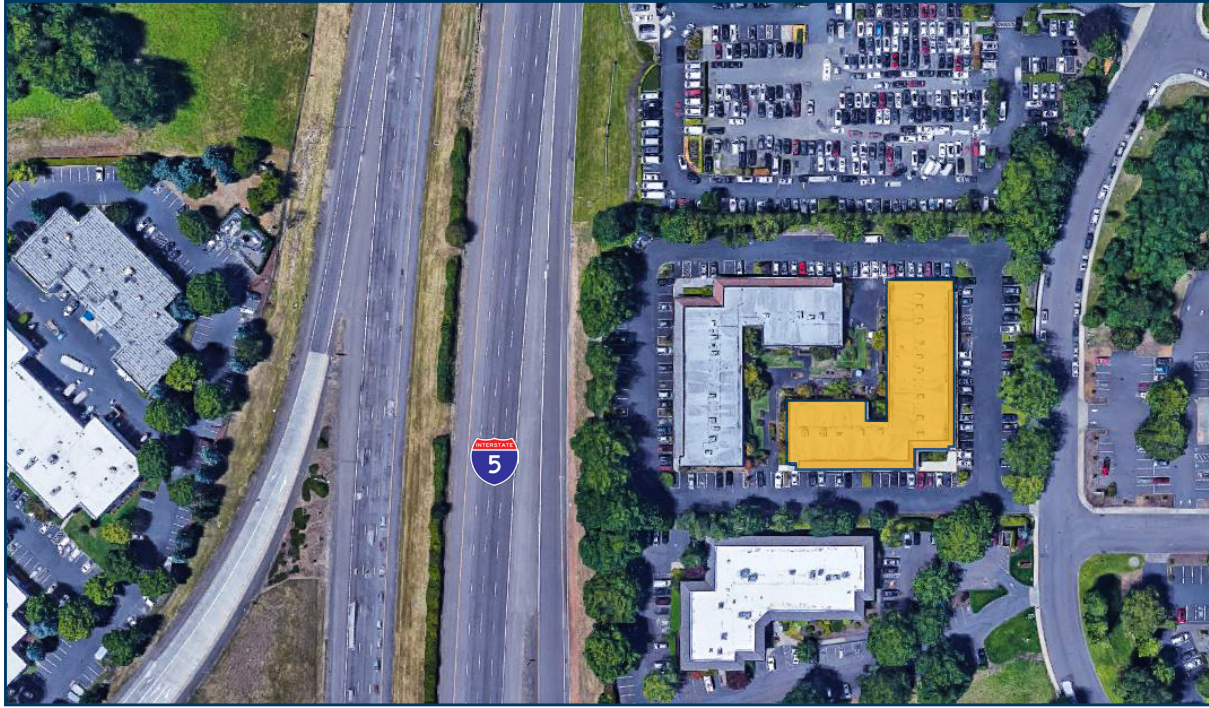
**DAVID ELLIS**  
Principal

503-517-9871

[dave@capacitycommercial.com](mailto:dave@capacitycommercial.com)



# FLOOR PLAN & LOCATION





# IMAGE LIBRARY & AMENITY AERIAL

