

# FOR SUBLEASE

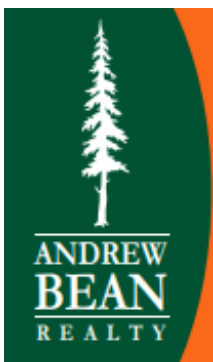
9124 SE 67<sup>th</sup> Ave, Portland, Clackamas County, 97206

**NO MULTNOMAH COUNTY TAXES!**



**DIRECT DEAL AVAILABLE!**  
**Can be combined with 9122 SE 67<sup>th</sup>**  
**for +/-16,000 SF**

- +/-8,000 Sq. Ft. Shell of which +/-750 Sq. Ft. is Office
- Two Grade-Level Loading Doors (14' High X 14' Wide)
  - Loading Dock with Access for 53' Trailer
  - 16' – 18' Foot Ceilings in Warehouse
    - Bonus Mezzanine Storage
    - Heavy 3-Phase Power
    - CALL FOR RATES



**Andrew Bean, SIOR**

**503-819-5381**

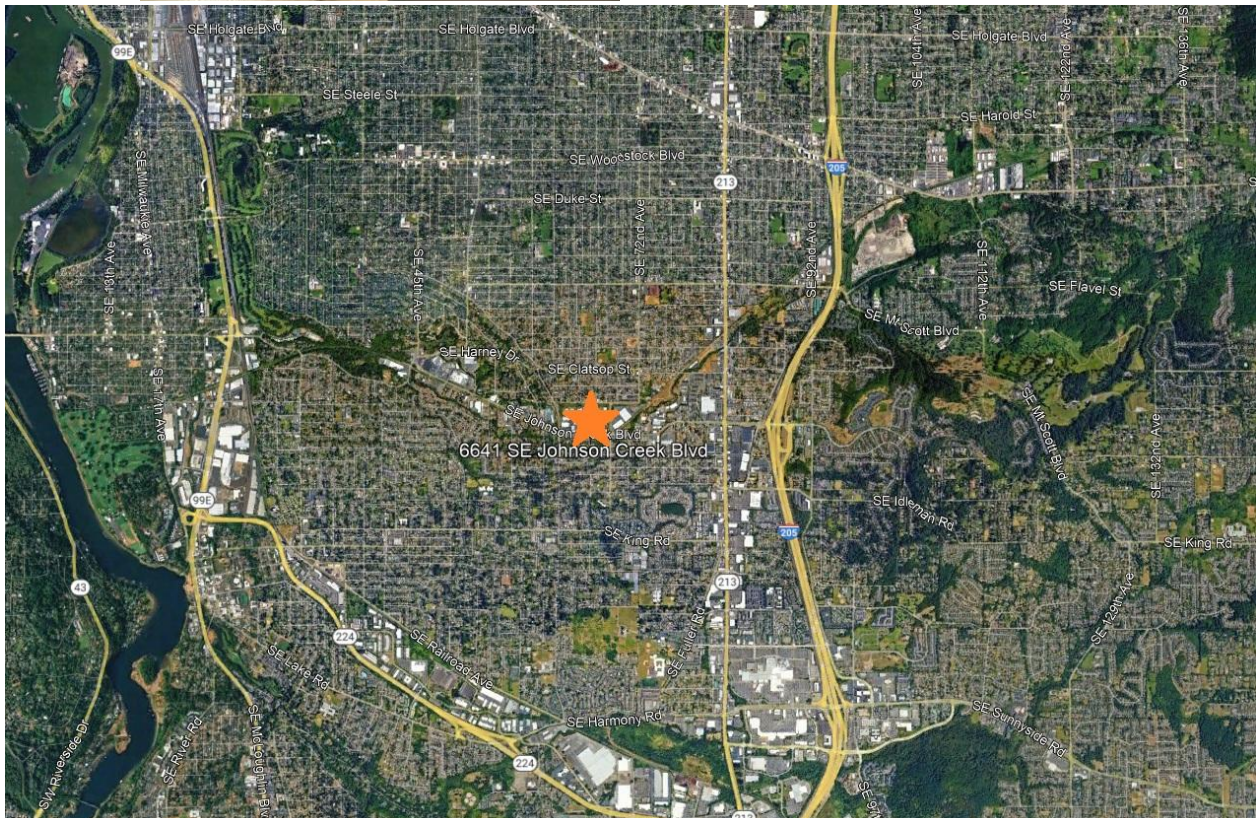
**[andrew@andrewbeanrealty.com](mailto:andrew@andrewbeanrealty.com)**

PO Box 10104  
Portland, Oregon 97296

*This information has been obtained by others and deemed to be reliable. However, a prospective purchaser or lessee is expected to verify all information to their own satisfaction.*

# FOR SUBLEASE

9124 SE 67<sup>th</sup> Ave, Portland, Clackamas County, 97206



**Andrew Bean, SIOR**

**503-819-5381**

**[andrew@andrewbeanrealty.com](mailto:andrew@andrewbeanrealty.com)**

*This information has been obtained by others and deemed to be reliable. However, a prospective purchaser or lessee is expected to verify all information to their own satisfaction.*