

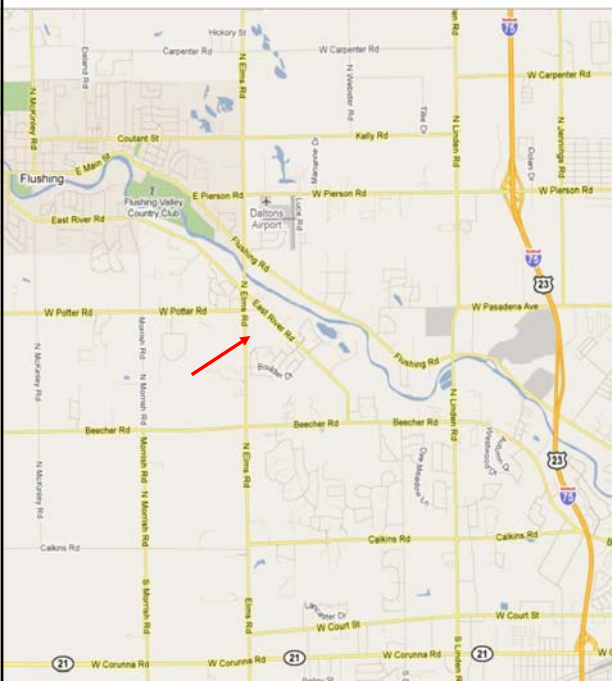


MDI Real Estate Services

P. O. Box 310289
Flint, Michigan 48531
www.mdires.com
810-733-0760



2500 N. Elms, Flushing, Michigan



Property Name:	Elms Medical Center
Major Tenants:	McLaren Rehab
Parking:	Ample
Zoning:	Office/Medical
Year Built:	2004
Total Sq. Ft.:	13,750
Available Sq. Ft.:	5,800
Lease Rate:	\$18.00 NNN

810-733-0760

www.mgtdiv.com

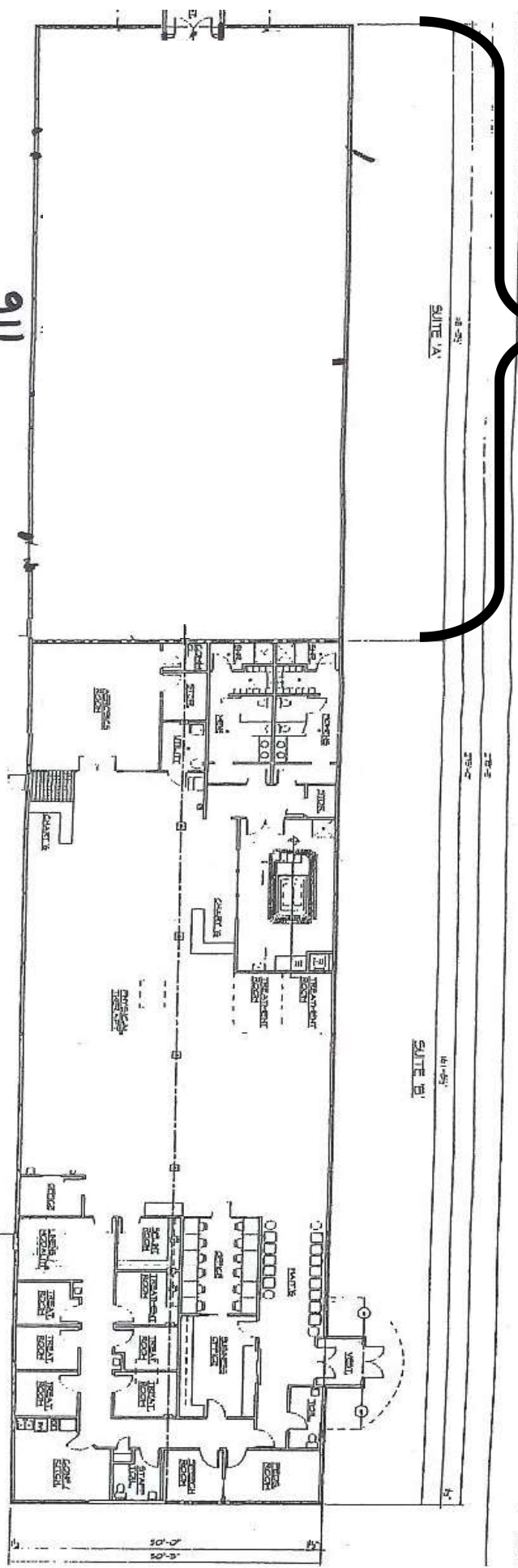
info@mgtdiv.com



Note: This offering is subject to errors, omissions, prior sale or withdrawal without notice.

911

COMPOSITE FLOOR PLAN
SCALE 3/8" = 1'-0"



SUITE 116

Approximately
5,800 s.f.