

PM PHILLIPS MURRAH

FOR LEASE

± 17,075 SF
MIDTOWN
OFFICE SPACE

THE
PHILLIPS MURRAH
BUILDING

424 NW 10TH STREET
OKLAHOMA CITY, OK 73103

PHILLIPS MURRAH
424

424
PHILLIPS MURRAH



MIDTOWN OFFICE SPACE

424 NW 10TH STREET
OKLAHOMA CITY, OK 73103

± 17,075 SF FOR LEASE

PROPERTY DETAILS

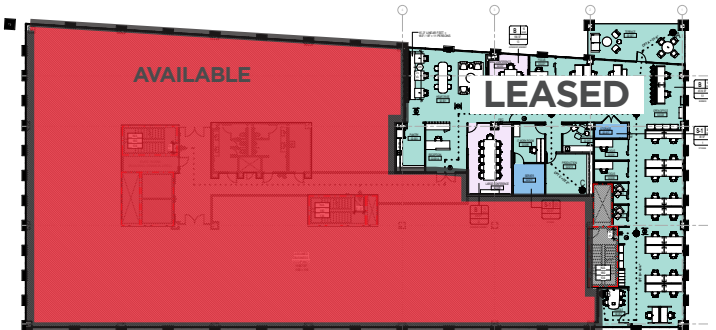
- BUILDING SIZE: ± 79,658 SF
- **SQ. FT. AVAILABLE:** ± 17,075 SF
- FLOOR: 1st & 2nd (Demisable)
- YEAR BUILT: U/C
- FLOORS: 5
- PARKING: Paid Garage
- **LEASE RATE:** \$28.00 NNN
- Join Phillips Murrah and Midtown in the newest Class "A" office and future mixed-use development coming Summer 2024. Project will feature garage parking and future on-site restaurants.

FLOOR PLANS

1st Floor: ± 3,796 SF



2nd Floor: ± 13,279 SF



COMMERCIAL
OKLAHOMA

204 N Robinson Ave, Ste 2000 | Oklahoma City, OK 73102
+ 1 405 563 5000 | commercialoklahoma.com

VIVIENNE VOGLER
+1 405 570 8595

vvogler@commercialoklahoma.com

MICAH SHERMAN
+1 405 488 5548

msherman@commercialoklahoma.com

TRAVIS MASON
+1 405 297 9924

tmason@commercialoklahoma.com

©2025 Cushman & Wakefield | Commercial Oklahoma. Independently Owned and Operated / A Member of the Cushman & Wakefield Alliance
All rights reserved. The information contained in this communication is strictly confidential. This information has been obtained from sources believed to be reliable but has not been verified. No warranty or representation, express or implied, is made as to the condition of the property (or properties) referenced herein or as to the accuracy or completeness of the information contained herein, and same is submitted subject to errors, omissions, change of price, rental or other conditions, withdrawal without notice, and to any special listing conditions imposed by the property owner(s). Any projections, opinions or estimates are subject to uncertainty and do not signify current or future property performance.