



FOR SALE

# 2020 SE 34TH AVE, PORTLAND, OR 97214

\* All images presented are building renderings and do not reflect finished product.

**COOPER COLLINS**  
503.972.7287  
cooper@macadamforbes.com

**MACADAM  
FORBES**  
COMMERCIAL REAL ESTATE SERVICES

## PROPERTY DESCRIPTION

This property presents a rare opportunity to acquire a brand-new, 2026-built, four-unit multifamily asset in one of Portland's most coveted inner eastside locations, perfectly positioned halfway between SE Division St and SE Hawthorne Blvd. The property features a distinctive four-corners floor plan, with each unit occupying its own corner of the lot for maximum privacy and livability. Each of the four 2-bedroom, 1.5-bath units (~980 SF) is finished to a high standard, including engineered hardwood floors, Carrara marble baths with heated floors, Carrara quartz countertops with full-slab backsplashes, custom cabinetry, mini-split heating and cooling, and generous attic storage. Fiber cement exterior, all-electric utilities, and public water/sewer round out a low-maintenance profile ideal for long-term ownership.

The projected annual gross income of \$144,000 and the ability to customize finishes make this an exceptional turn-key investment or owner-occupant opportunity in a neighborhood that consistently commands strong rental demand.

## PROPERTY HIGHLIGHTS

- New 2026 construction | 4-unit, four-corners floor plan with each unit occupying its own corner of the lot.
- Premium finishes: engineered hardwood, heated Carrara marble baths, quartz counters with full slab backsplashes, custom cabinetry.
- Projected gross income: \$144,000 | October 2026 completion with customization still available.
- Prime SE Portland location, halfway between Division St and Hawthorne Blvd.

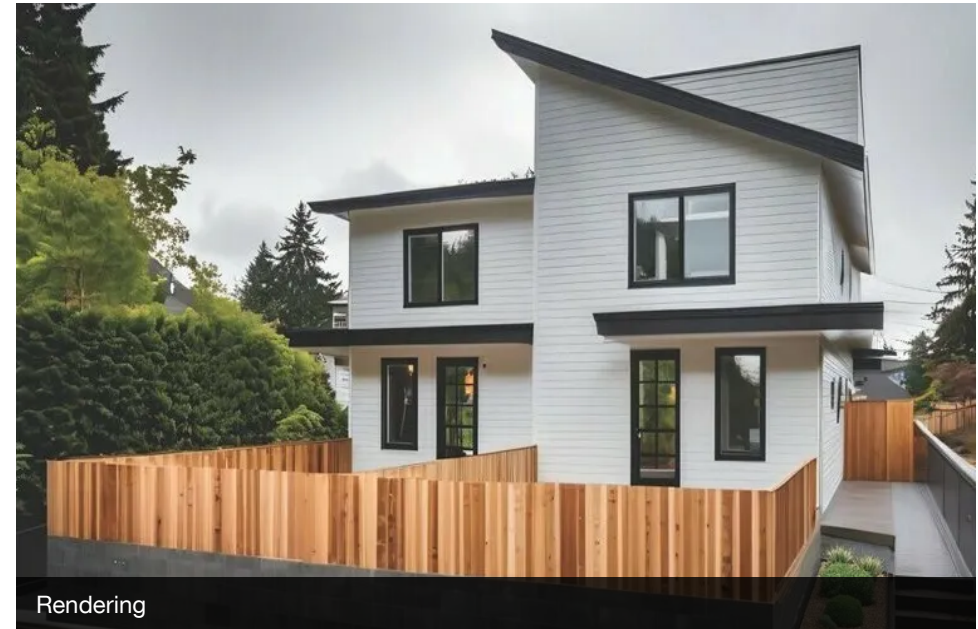
## OFFERING SUMMARY

<b>Sale Price:</b>	Contact Broker
<b>Number of Units:</b>	4
<b>Lot Size:</b>	0.11 Acres
<b>Building Size:</b>	3,920 SF
<b>Year Built:</b>	2026

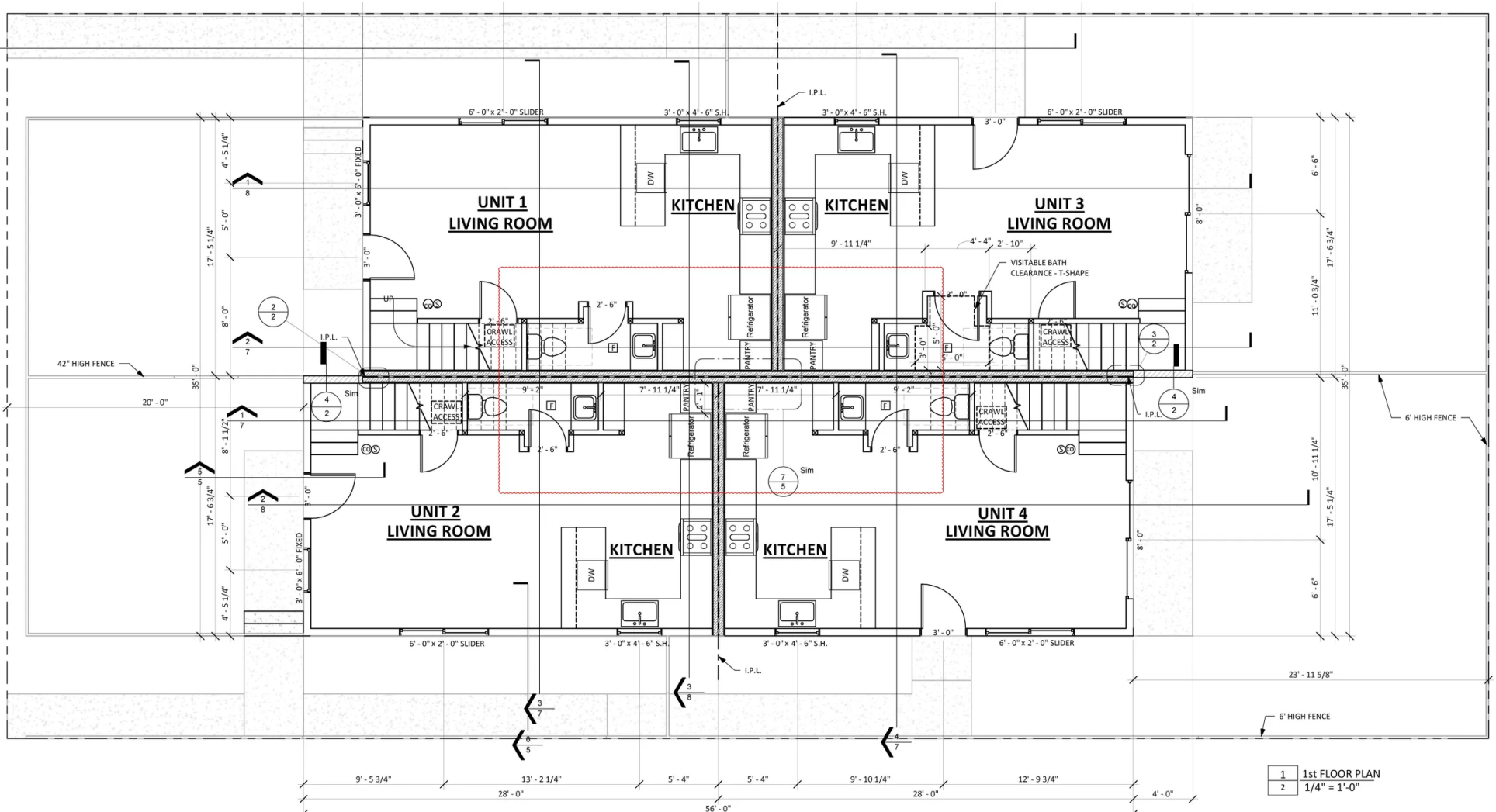
\*ALL IMAGES PRESENTED ARE BUILDING RENDERINGS AND DO NOT REFLECT FINISHED PRODUCT

## COOPER COLLINS

503.972.7287 | [cooper@macadamforbes.com](mailto:cooper@macadamforbes.com)



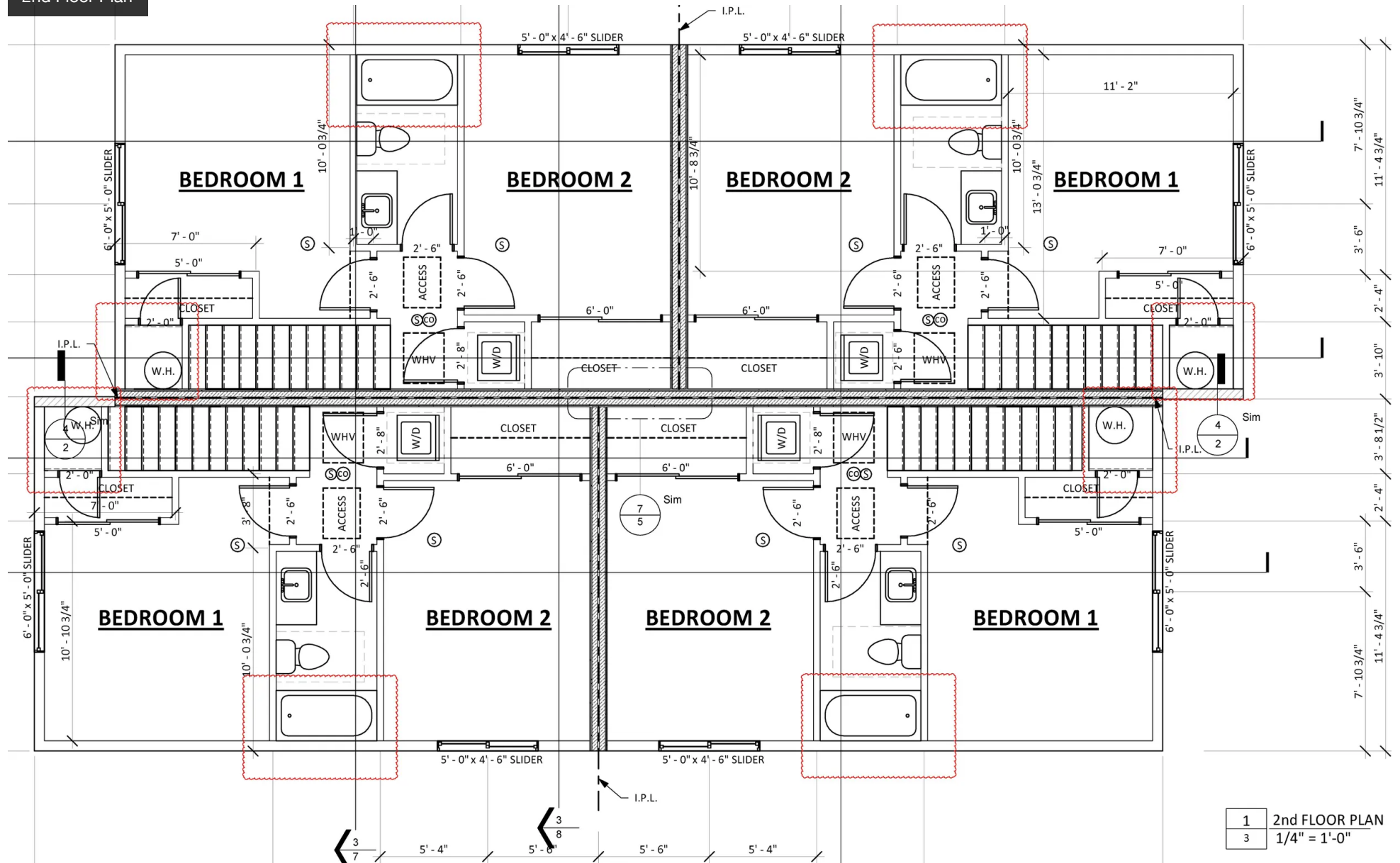
1st Floor Plan



**COOPER COLLINS**

503.972.7287 | cooper@macadamforbes.com

2nd Floor Plan





## LOCATION OVERVIEW

Situated in Portland's highly desirable Hawthorne/Division corridor, 2020 SE 34th Ave places residents steps from SE Division Street's renowned dining and retail scene. Everyday conveniences are close at hand with Safeway and New Seasons Market nearby, while Sewallcrest Park offers green space just blocks away. Excellent TriMet bus access at SE Division & 34th Ave provides easy connectivity throughout the city, and the neighborhood's walkability and bike infrastructure make car-free living a natural fit.

### COOPER COLLINS

503.972.7287 | cooper@macadamforbes.com