

VALUE ADD 5-UNIT APARTMENT COMPLEX

2403 LOUELLA AVE, VENICE, CA 90291

PRIME WEST LA VENICE BLVD COORDIOR



PRESENTED BY



THE YAMZON TEAM

2024 RANKING
#1 California
#2 Nationwide
#3 Worldwide

ERIC EIDE

Remax Commercial
Senior Sales Associate
Direct: 714-785-2557
Email: Ericeide@remax.net
CA DRE LICENSE #01207980

DEREK ING

Remax Commercial
Senior Sales Associate
Direct: 626-272-0948
Email: Dereking.remaxcre@gmail.com
CA DRE LICENSE #02041751

JORGE YAMZON

Remax Commercial
Senior Vice President / Director
Direct: 626-786-5869
Email: Jorgeyamzon@remax.net
CA DRE LICENSE #01359483

DISCLAIMER

THIS INFORMATION HAS BEEN SECURED FROM SOURCES WE BELIEVE TO BE RELIABLE, BUT WE MAKE NO REPRESENTATIONS OR GUARANTEES, EXPRESSED OR IMPLIED, AS TO THE ACCURACY OF THE INFORMATION. REFERENCES TO SQUARE FOOTAGE OR AGE ARE APPROXIMATE. BUYER MUST VERIFY THE INFORMATION AND BEARS ALL RISK FOR ANY INACCURACIES.

PROPERTY DESCRIPTION

Subject Property:	2403 Louella Ave, Venice, CA 90291
Building Size:	± 2,947 SF
Lot Size:	± 5,858 SF (± 0.13 AC)
No. of Stories:	2
No. of Units:	5
Unit Mix:	(4) 1+1 (1) 2+1.
Year Built:	1950
No. of Parking:	4 Garage
Street Frontage:	± 48 Ft Along Venice Blvd
Property Type:	Multifamily
Zoning:	LAR4
APN:	4236-006-006



THIS INFORMATION HAS BEEN SECURED FROM SOURCES WE BELIEVE TO BE RELIABLE, BUT WE MAKE NO REPRESENTATIONS OR GUARANTEES, EXPRESSED OR IMPLIED, AS TO THE ACCURACY OF THE INFORMATION. REFERENCES TO SQUARE FOOTAGE OR AGE ARE APPROXIMATE. BUYER MUST VERIFY THE INFORMATION AND BEARS ALL RISK FOR ANY INACCURACIES.

INVESTMENT HIGHLIGHTS

- Prime West LA Location Along Venice Blvd
- Value Add with Below Market Rents, and Garage Parking Spaces
- All Units have been Renovated
- Ideal Location in the Heart of Silicon Beach's "Tech Hub" with Close Proximity to Major Employers (Snap Inc., Google, System1, Headspace, and More)
- Less than a Mile Away from the Famous Venice Beach & Boardwalk and in Close Proximity to other well-known Surrounding Amenities and Locations, including Muscle Beach, Venice Skatepark, Venice Canals Historic District, Abbot Kinney Boulevard, and Santa Monica Pier
- Submarket Median Home Values Expected to Increase by Approximately 12% in the Next 5 Years
- Adjacent to Culver City, Marina Del Rey, and Santa Monica
- Down the Street from CA 10 and 405 Freeway
- 7 Miles Away from Los Angeles Airport (LAX)
- 2.5 Miles Away from Santa Monica Airport
- 4.5 Miles Away from West Los Angeles College (WLAC)
- 8 Miles Away from UCLA



AERIAL MAP



Bel Air



Beverly Hills

Hollywood

Los Feliz

North East LA

Alhambra



Monterey Park

Westwood

Central LA



Brentwood

Mid-City

Culver City



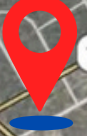
East LA

Santa Monica



Montebello

Commerce



Ladera Heights

South LA

Huntington Park

Marina Del Rey

Bell Gardens



Inglewood

South Gate

Downey

El Segundo

Hawthorne

Willowbrook

Lynwood

Manhattan Beach

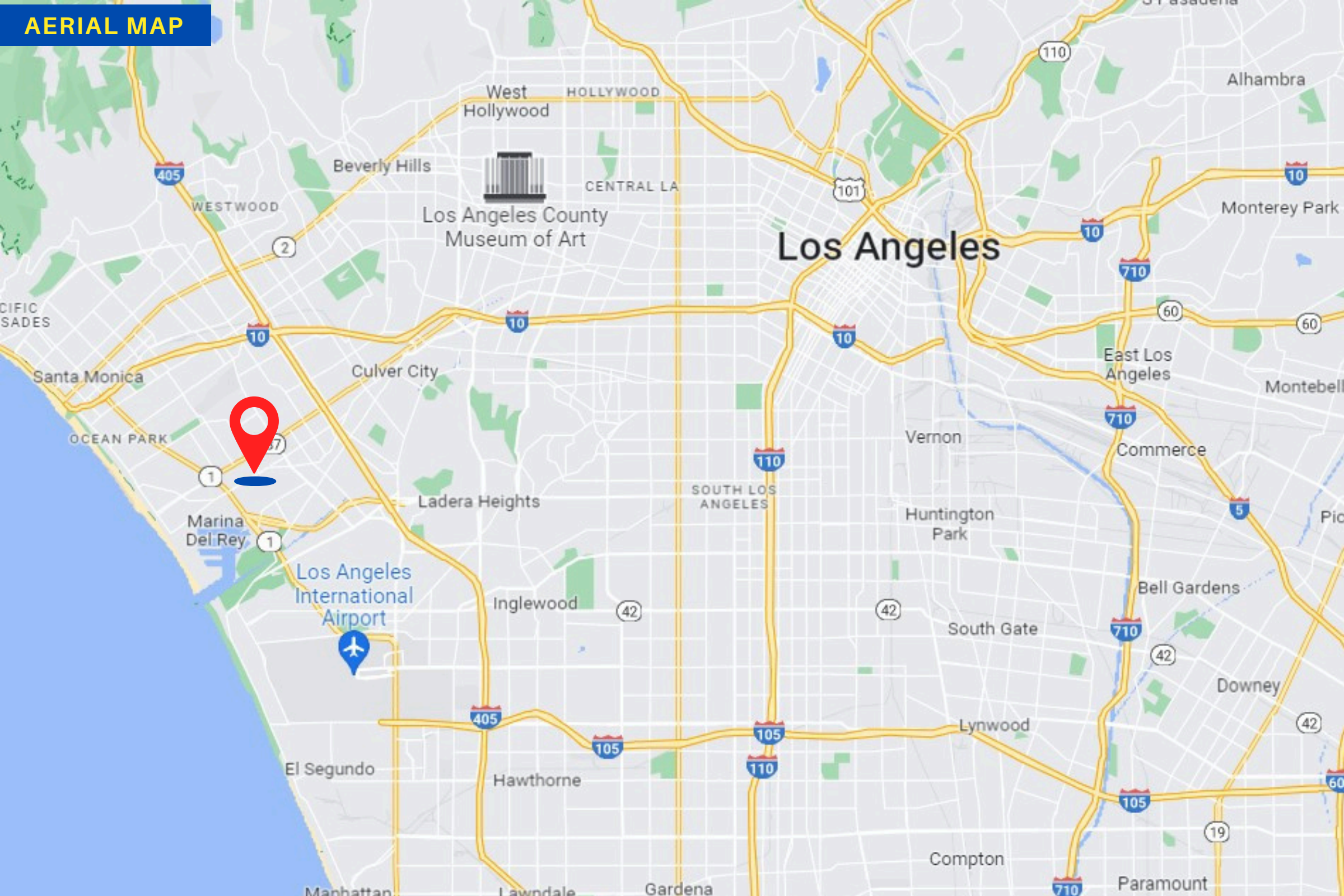
Gardena



Compton

Paramount

AERIAL MAP



Los Angeles County Museum of Art

Los Angeles

Los Angeles International Airport

Marina Del Rey

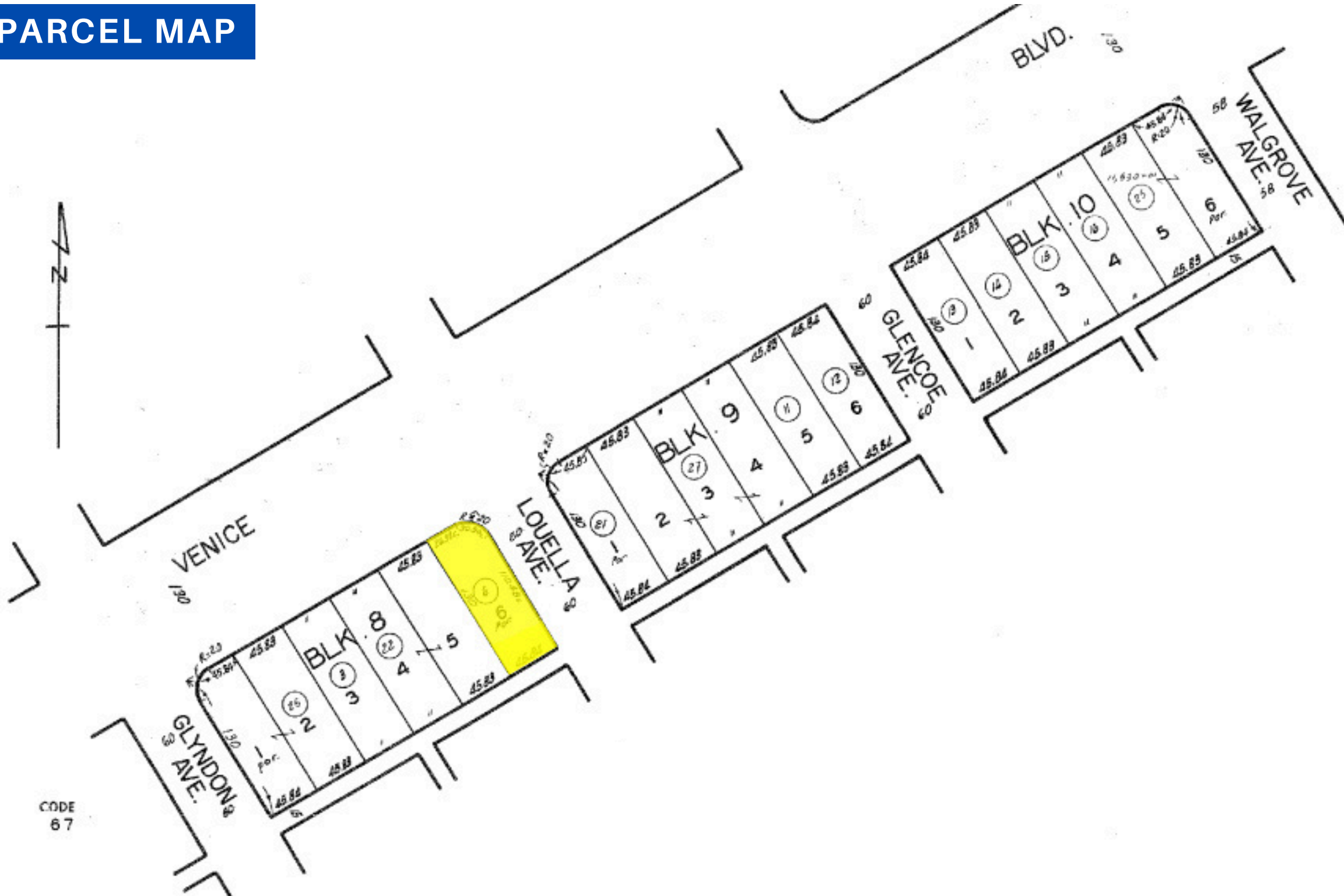
PROPERTY PHOTOS







PARCEL MAP



CODE
67

RADIUS DEMOGRAPHICS



Population

	3 miles	5 miles	10 miles
2020 Population	255,850	535,592	1,855,087
2024 Population	255,115	540,154	1,821,298
2029 Population Projection	250,440	531,832	1,780,781
Annual Growth 2020-2024	-0.1%	0.2%	-0.5%
Annual Growth 2024-2029	-0.4%	-0.3%	-0.4%
Median Age	40.8	40.3	39.4

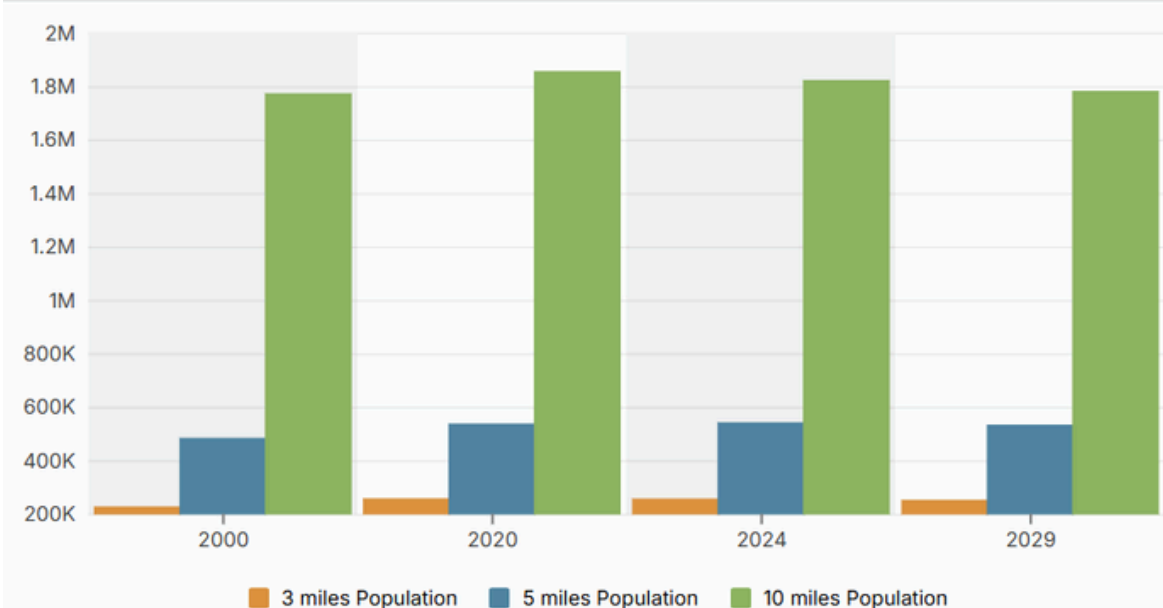
Population By Race

	3 miles	5 miles	10 miles
White	138,644	297,540	665,031
Black	12,518	34,518	266,055
American Indian/Alaskan Native	2,251	3,740	23,285
Asian	36,908	81,460	216,905
Hawaiian & Pacific Islander	466	919	3,616
Two or More Races	64,329	121,977	646,406
Hispanic Origin	55,696	100,924	631,686

Housing

	3 miles	5 miles	10 miles
Median Home Value	\$1,116,859	\$1,107,351	\$1,056,701
Median Year Built	1972	1971	1963

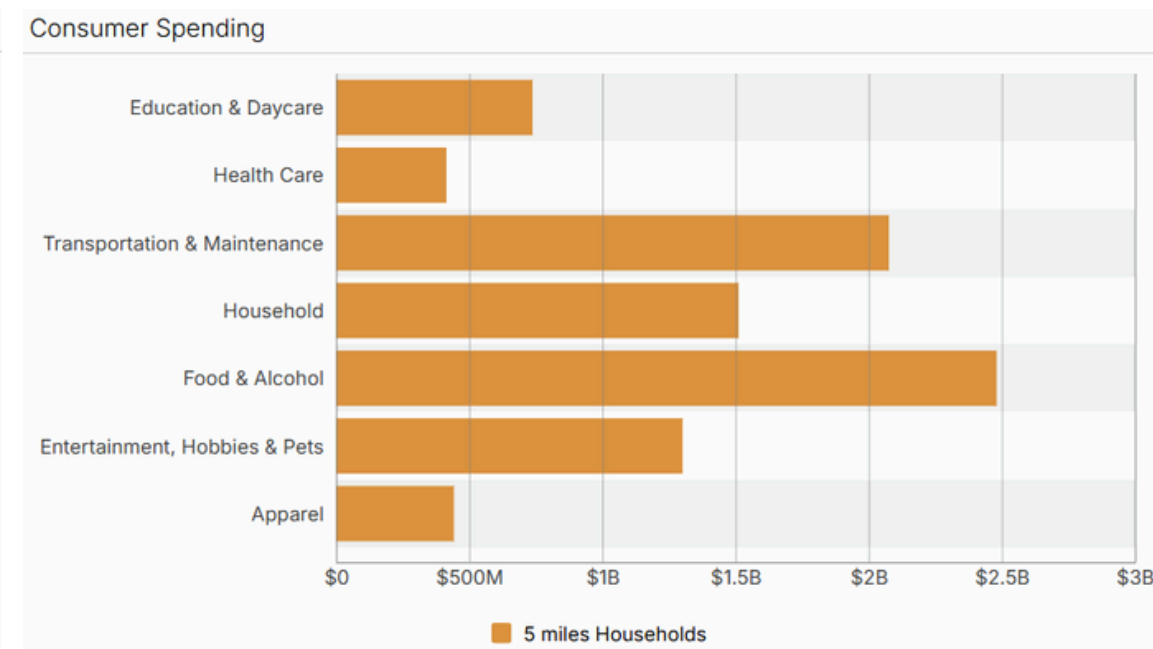
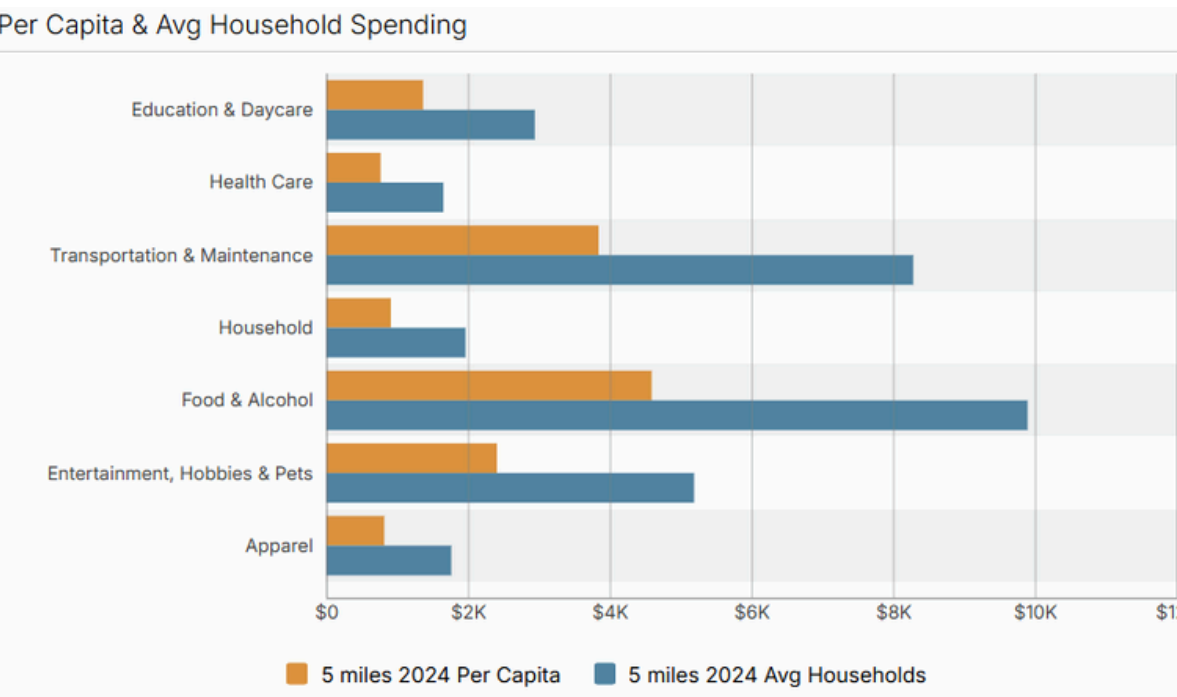
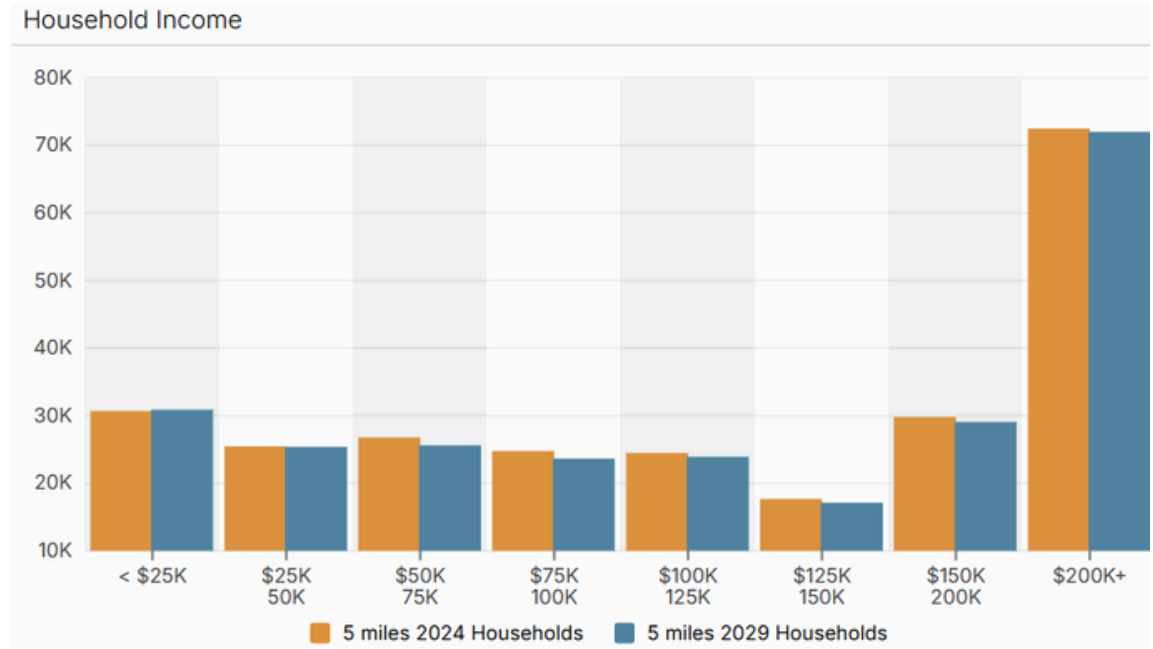
Population



Households

	3 miles	5 miles	10 miles
2020 Households	120,505	249,969	747,645
2024 Households	119,514	250,626	732,333
2029 Household Projection	117,011	246,094	714,643
Annual Growth 2020-2024	1.6%	1.7%	1.2%
Annual Growth 2024-2029	-0.4%	-0.4%	-0.5%
Owner Occupied Households	37,210	83,841	237,434
Renter Occupied Households	79,801	162,253	477,209

	3 miles	5 miles	10 miles
Avg Household Income	\$150,632	\$151,085	\$127,076
Median Household Income	\$119,013	\$118,880	\$92,495
< \$25,000	13,914	30,499	114,781
\$25,000 - 50,000	12,551	25,290	102,072
\$50,000 - 75,000	12,930	26,582	93,976
\$75,000 - 100,000	11,390	24,583	79,074
\$100,000 - 125,000	11,796	24,309	67,495
\$125,000 - 150,000	8,618	17,487	47,121
\$150,000 - 200,000	14,377	29,614	71,854
\$200,000+	33,937	72,262	155,959





THE YAMZON TEAM

CONTACT

ERIC EIDE

Remax Commercial
Senior Sales Associate
Direct: 714-785-2557
Email: Ericide@remax.net
CA DRE LICENSE #01207980

DEREK ING

Remax Commercial
Senior Sales Associate
Direct: 626-272-0948
Email: Dereking.remaxcre@gmail.com
CA DRE LICENSE #02041751

JORGE YAMZON

Remax Commercial
Senior Vice President / Director
Direct: 626-786-5869
Email: Jorgeyamzon@remax.net
CA DRE LICENSE #01359483