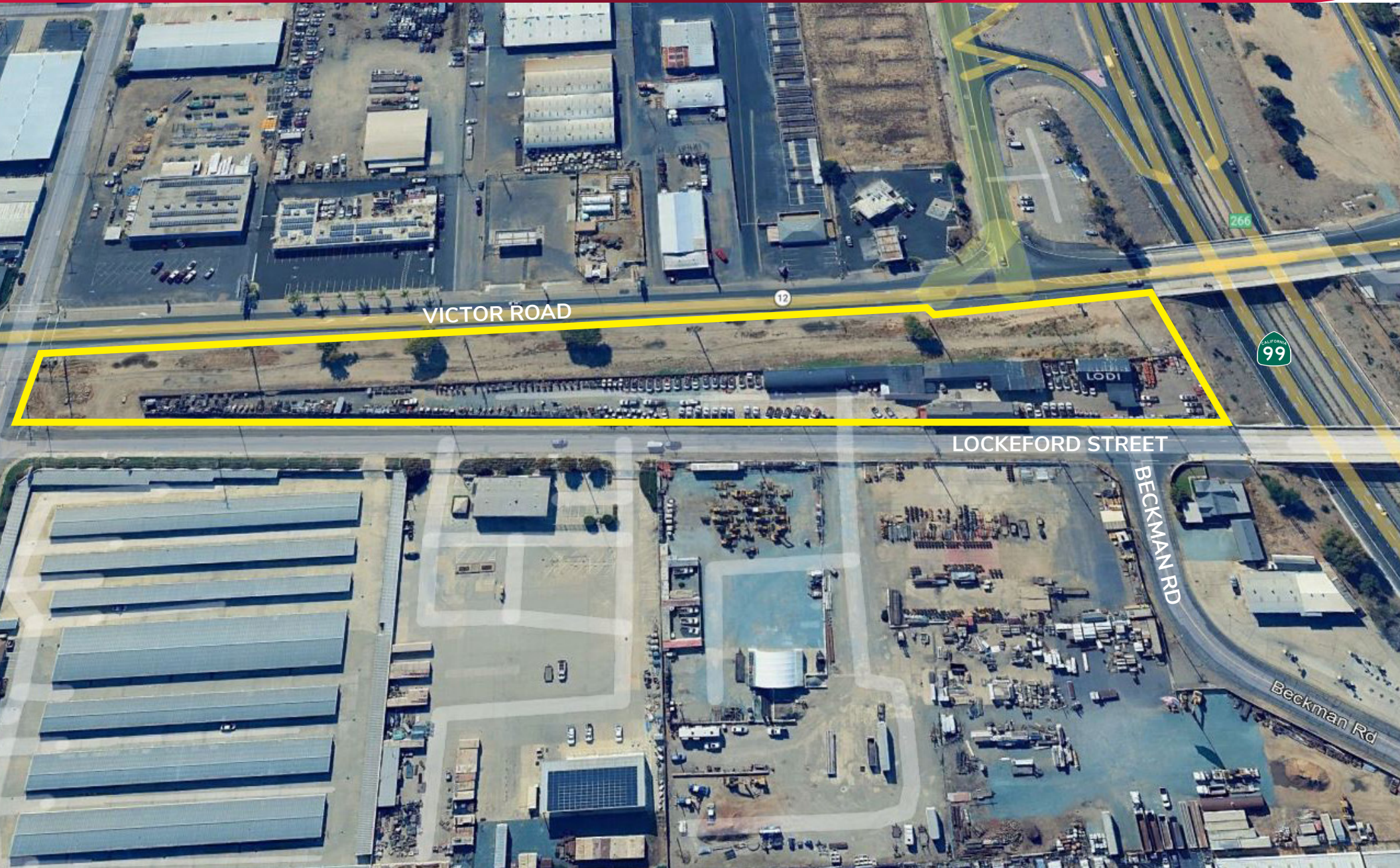


INDUSTRIAL - SHOP & YARD

AVAILABLE FOR SALE

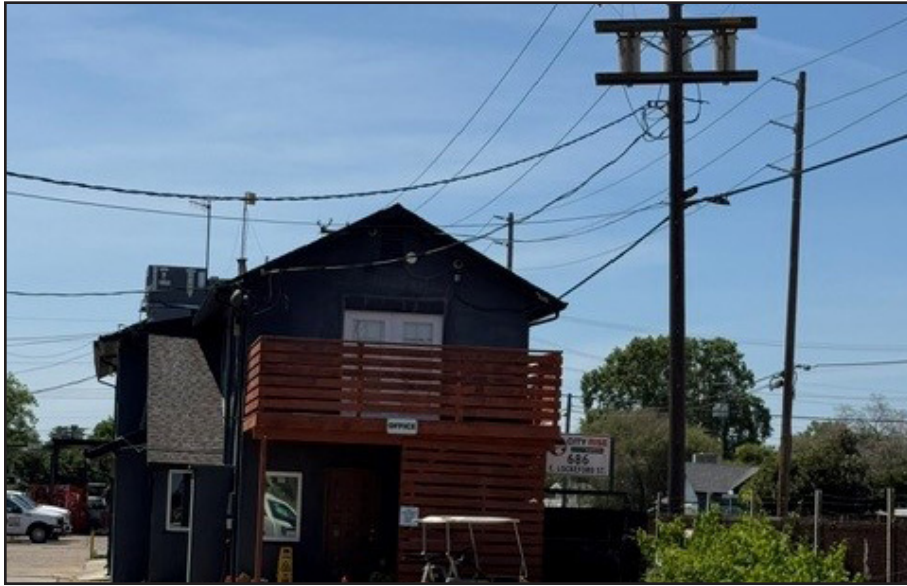
680, 681 & 686 E. LOCKFORD STREET AND 925 E. VICTOR ROAD | LODI, CA



INDUSTRIAL - SHOP & YARD

AVAILABLE FOR SALE

680, 681 & 686 E. LOCKEFORD STREET AND 925 E. VICTOR ROAD | LODI, CA



- APNs: 049-050-010, 030, 420, 640, 020
- SHOP SPACE: 5,625± SF
- OFFICE SPACE: 6,950± SF
- COVERED AWNING/
WORKSPACE: 5,825± SF
- PARCEL SIZE: 4.31± (5 parcels)
- ZONING: M (City of Lodi – Industrial)
- Tremendous visibility/frontage along Hwy 99 and Hwy 12
- Excellent access to/from Hwy 99 at Victor Rd/Hwy 12 off-ramp
- Fully fenced/secured site
- Fully surfaced yard – partly paved, partly compacted gravel
- Extensive yard lighting
- Three (3) gated entrance points
- Ideal location/facility for transportation, construction, contracting, equipment maintenance and/or sales
- **DO NOT DISTURB TENANT**
- **CONTACT AGENT FOR SHOWING/ VIEWING**

SALE PRICE: \$3,950,000

For More Information Contact: Jim Martin, SIOR
BRE# 01214270
jmartin@lee-associates.com
D 209.983.4088
C 925.352.6948

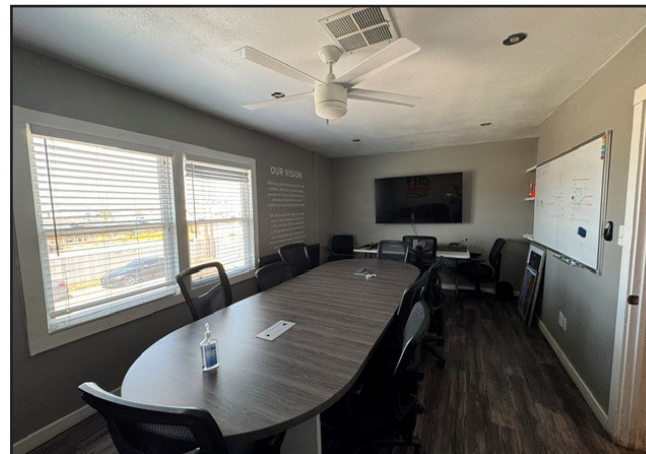
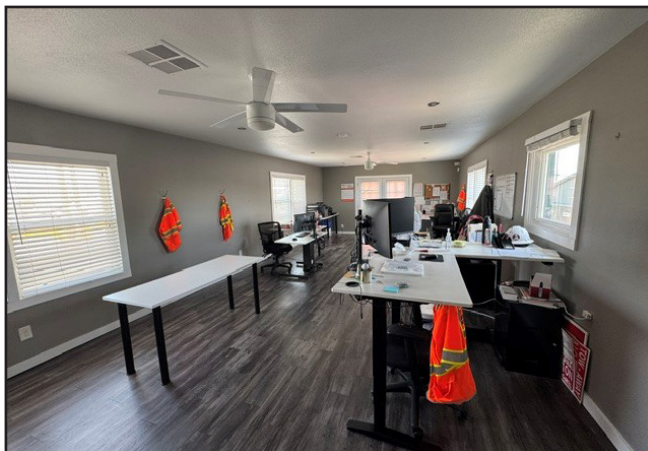
INDUSTRIAL - SHOP & YARD

AVAILABLE FOR SALE

680, 681 & 686 E. LOCKFORD STREET AND 925 E. VICTOR ROAD | LODI, CA



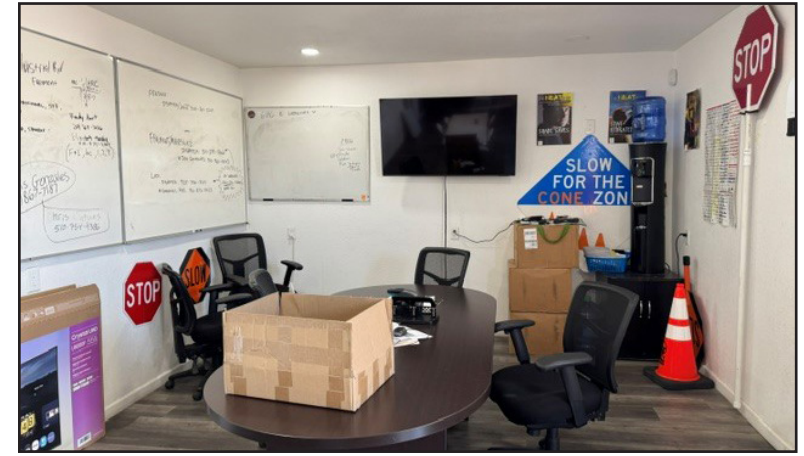
- 6,200± SF main office (3 stories), comprised of four (4) restrooms (2 on main floor / 2 upstairs), numerous private offices, meeting and training rooms, break room and reception.



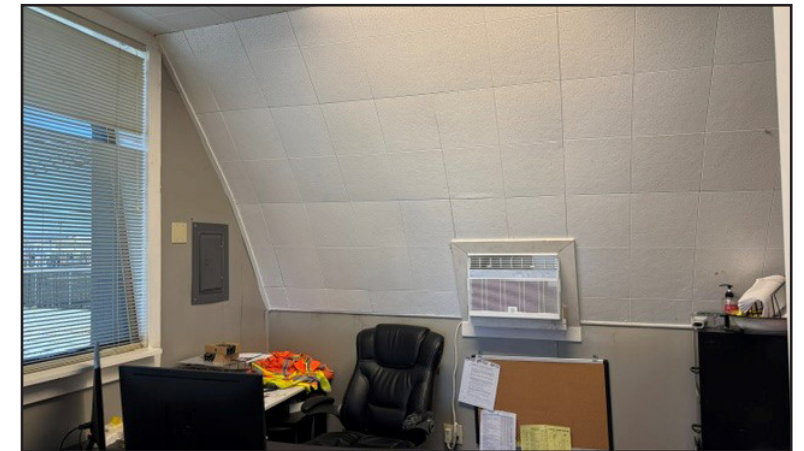
INDUSTRIAL - SHOP & YARD

AVAILABLE FOR SALE

680, 681 & 686 E. LOCKEFORD STREET AND 925 E. VICTOR ROAD | LODI, CA



- SHOP 1
- 1,625± sf shop / 750± sf office
- Two (2) rolling grade level doors
- LED shop lights

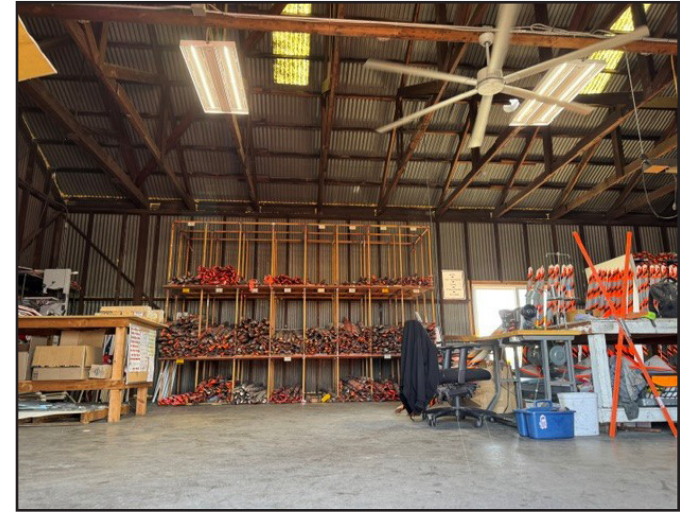


INDUSTRIAL - SHOP & YARD

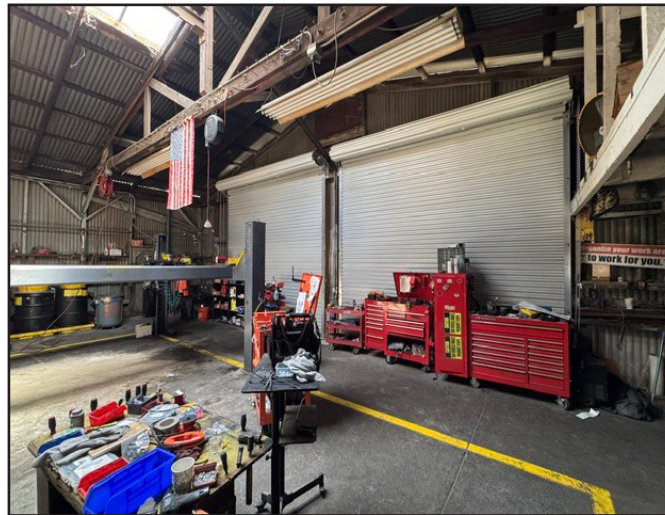
AVAILABLE FOR SALE

680, 681 & 686 E. LOCKEFORD STREET AND 925 E. VICTOR ROAD | LODI, CA

- SIGN SHOP
- 1,800± sf shop
- 925± sf awning



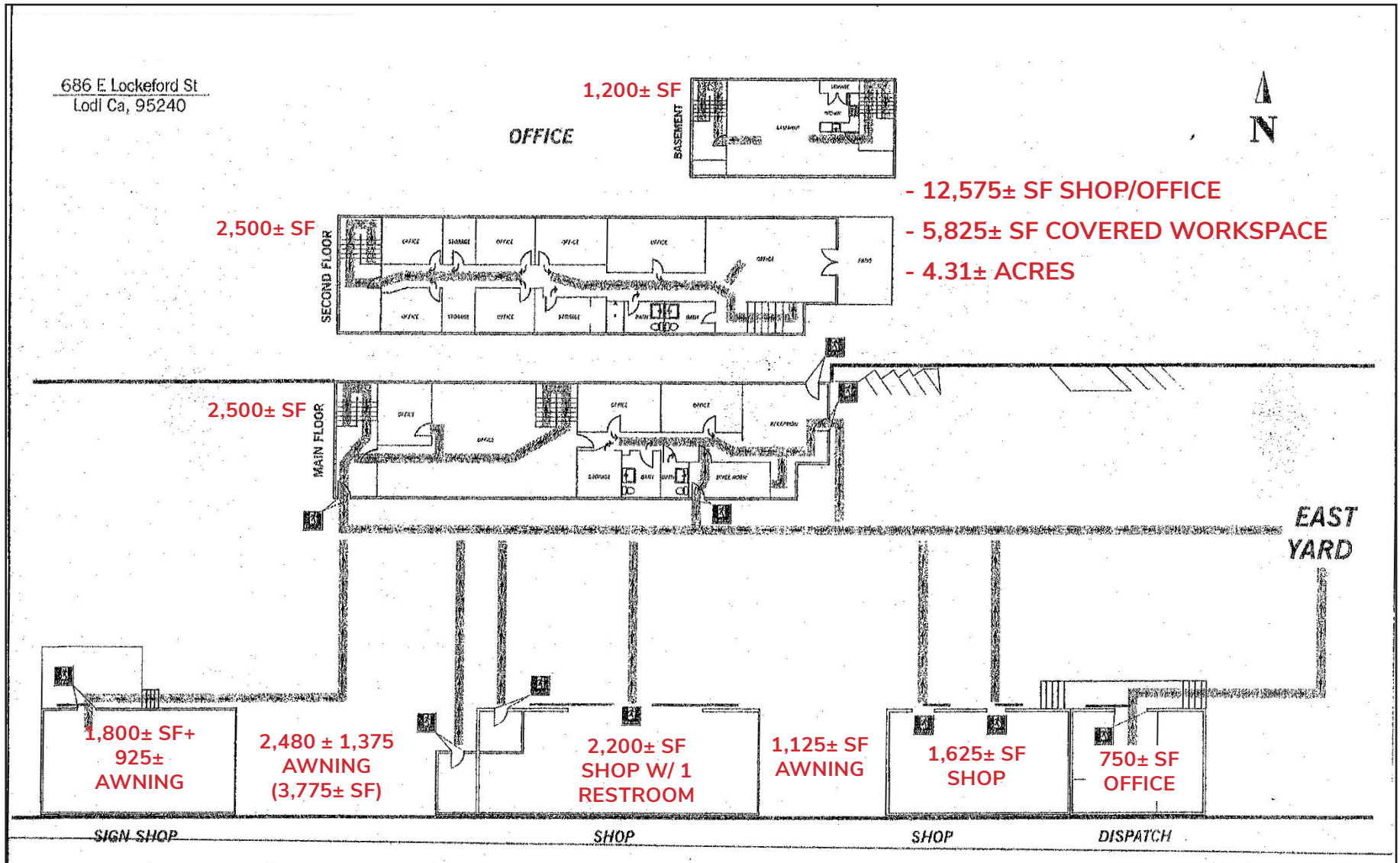
- SHOP 2
- 2,200± SF
- One (1) restroom
- Three (3) GL Doors



INDUSTRIAL - SHOP & YARD

AVAILABLE FOR SALE

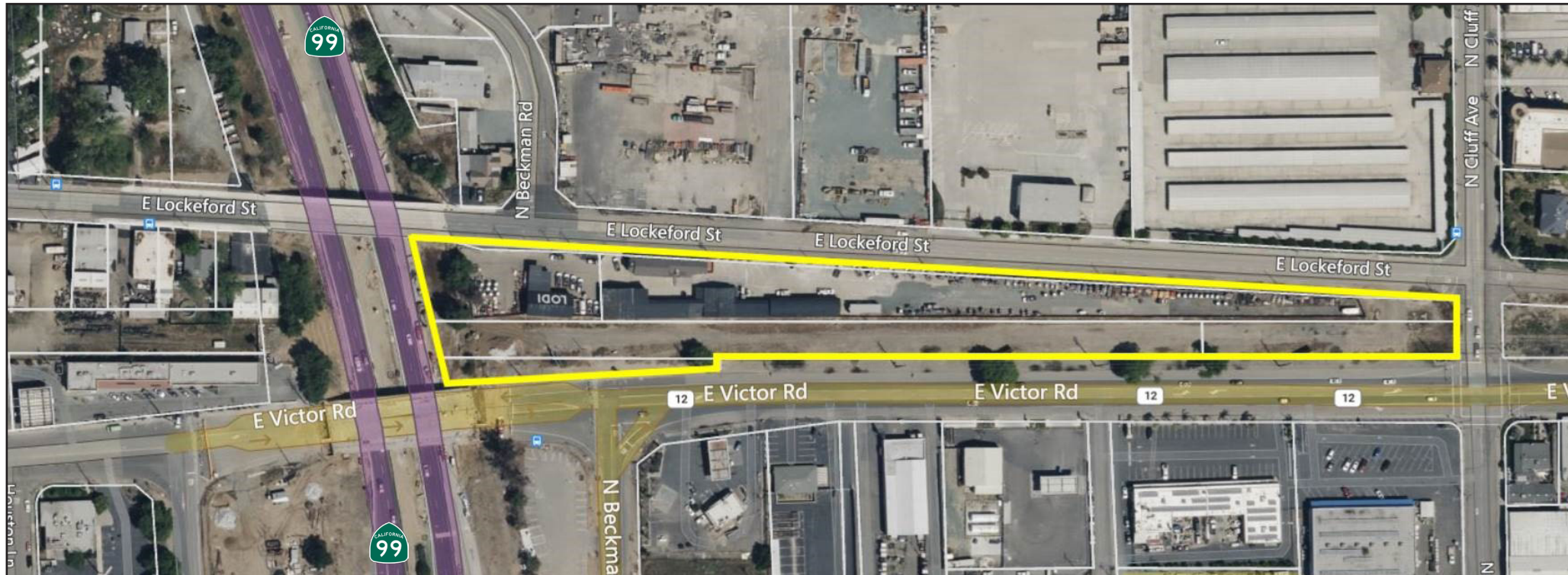
680, 681 & 686 E. LOCKFORD STREET AND 925 E. VICTOR ROAD | LODI, CA



All information furnished regarding property for sale, rental or financing is from sources deemed reliable, but no warranty or representation is made to the accuracy thereof and same is submitted to errors, omissions, change of price, rental or other conditions prior to sale, lease or financing or withdrawal without notice. No liability of any kind is to be imposed on the broker herein.

INDUSTRIAL - SHOP & YARD AVAILABLE FOR SALE

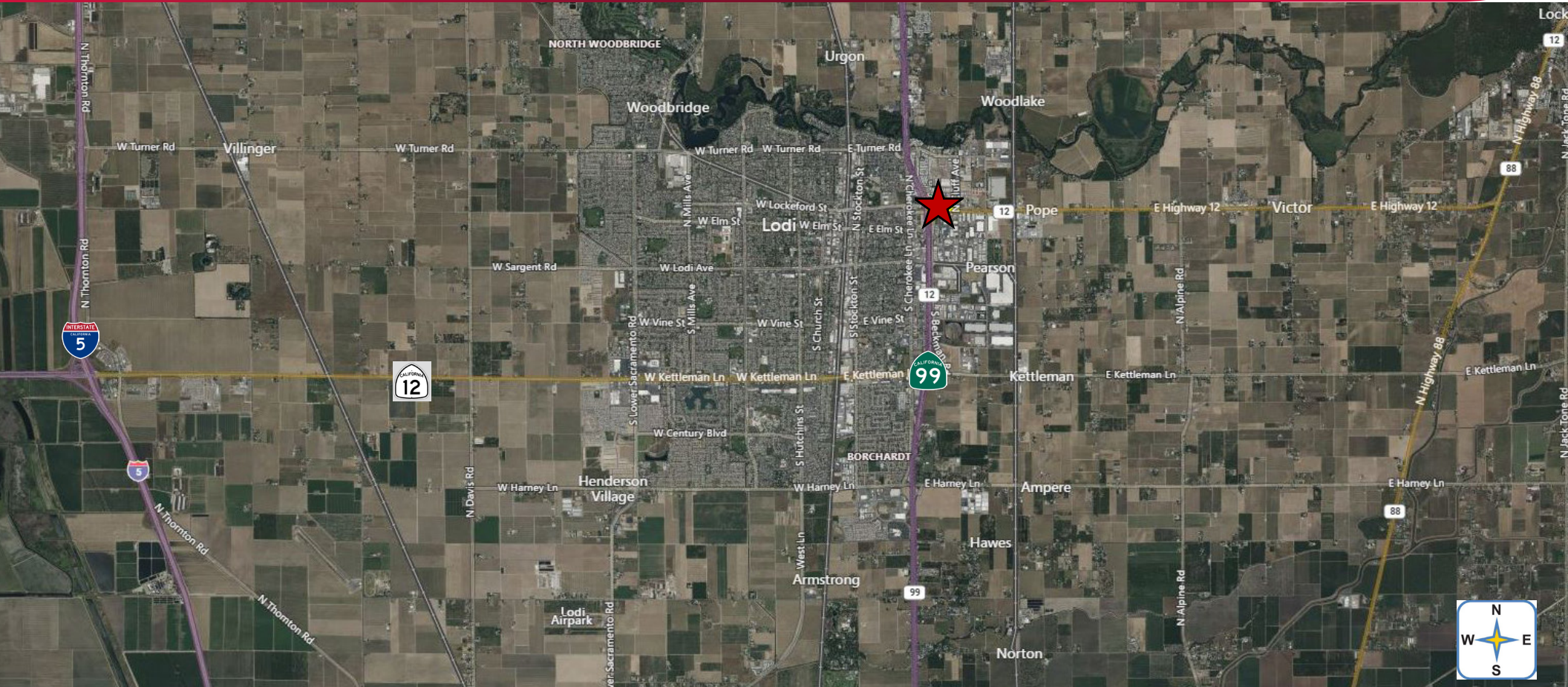
680, 681 & 686 E. LOCKEFORD STREET AND 925 E. VICTOR ROAD | LODI, CA



For More Information Contact: Jim Martin, SIOR
BRE# 01214270
jmartin@lee-associates.com
D 209.983.4088
C 925.352.6948

INDUSTRIAL - SHOP & YARD AVAILABLE FOR SALE

680, 681 & 686 E. LOCKFORD STREET AND 925 E. VICTOR ROAD | LODI, CA



- Tremendous visibility/frontage along Hwy 99 and Hwy 12
- Excellent access to/from Hwy 99 at Victor Rd/Hwy 12 off-ramp

For More Information Contact: Jim Martin, SIOR
BRE# 01214270
jmartin@lee-associates.com
D 209.983.4088
C 925.352.6948

All information furnished regarding property for sale, rental or financing is from sources deemed reliable, but no warranty or representation is made to the accuracy thereof and same is submitted to errors, omissions, change of price, rental or other conditions prior to sale, lease or financing or withdrawal without notice. No liability of any kind is to be imposed on the broker herein.