



Montpelier Street, Knightsbridge, SW7

United Kingdom | Sotheby's
INTERNATIONAL REALTY



Montpelier Street

A First Floor Apartment with Height, Calm and a Private Terrace

On Montpelier Street, this first floor apartment has the proportions and atmosphere that immediately set it apart. The higher ceilings, tall sash windows and well-judged layout give the home a gentle openness, while a private terrace at the rear introduces a rare sense of outdoor quiet in this part of Knightsbridge.

Designed and dressed by Rigby and Rigby, the apartment is arranged along a central corridor. The kitchen is centred around a simple island, with Bulthaup cabinetry and integrated Gaggenau appliances creating a clean, uncluttered workspace. The sitting room is separate, finished with engineered timber floors, a stone fireplace and tall windows fitted with automatic blinds that shift the light through the day.





Air conditioning, Lutron lighting and induction hobs complete the apartment's practical specification, while the overall finish remains understated and long-lasting. This is a turn-key Knightsbridge home with a natural sense of comfort, shaped by height, light and a clear, unforced layout.



There are two bedrooms, both ensuite. The principal suite is thoughtfully composed, with an integrated dressing area and a bathroom lined in book-matched marble. Double sinks and Crittall-style internal doors add structure to the space without disturbing the calm palette.

The terrace is one of the apartment's most quietly appealing features. Sheltered and discreet, it offers enough space for plants or bistro seating without being exposed to the street, leading off both bedrooms.









Location

Montpelier Street is close to Harrods, Sloane Street and the cafés and restaurants that animate the surrounding streets. Hyde Park and the museums of South Kensington are a short walk away, giving the apartment a setting that combines everyday convenience with one of London's most recognisable neighbourhoods.



SIZE

1184 Sq Ft

BEDROOMS

2

BATHROOMS

2 + 1 Cloakroom

FEATURES

- Roof terrace
- Air conditioning
- Mood lighting
- Sonos Music system

TENURE

Leasehold

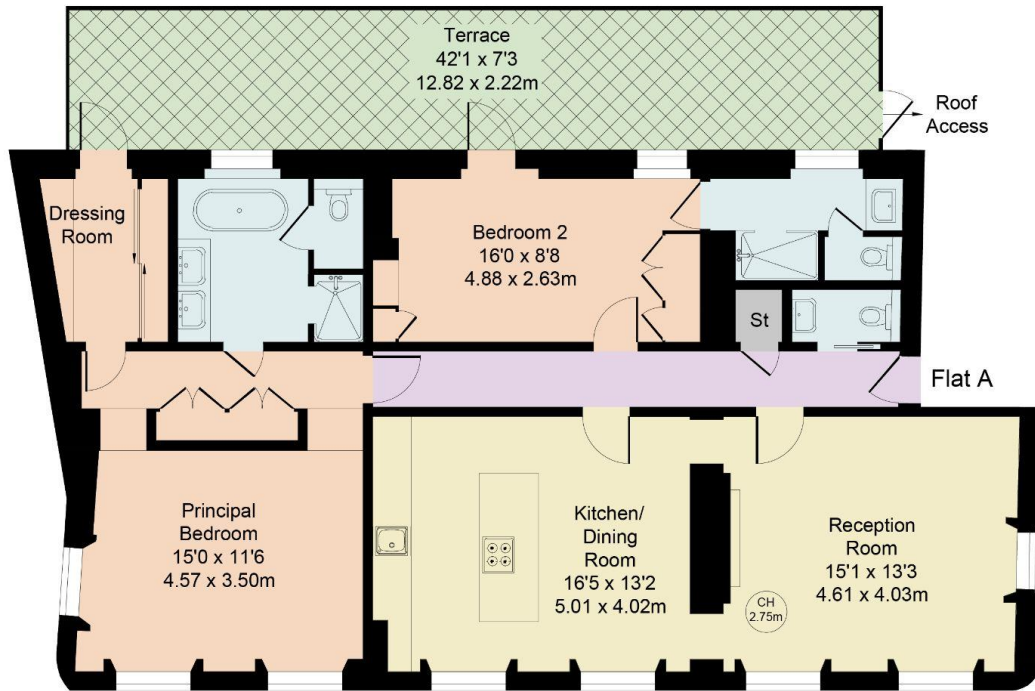
PRICE:

£3,750,000

Montpelier Street, SW7

Approximate Gross Internal Area 1184 sq ft - 110 sq m

Key :
CH - Ceiling Height



First Floor

This plan is not to scale and must be used as layout guidance only. All measurements and areas are approximate and should not be relied upon to provide accurate information. This plan must not be relied upon when making property valuations, design considerations or any other such relevant decisions. We accept no responsibility or liability (whether in contract, tort or otherwise) in relation to any loss whatsoever arising from or in connection with any use of this plan or the adequacy, accuracy or completeness of it or any information within it.

United Kingdom | **Sotheby's**
INTERNATIONAL REALTY

LOCAL AUTHORITY:
Westminster

EPC RATING
TBC

© 2024 Sotheby's International Realty Affiliates LLC. All rights reserved. Sotheby's International Realty® and the Sotheby's International Realty Logo are service marks licensed to Sotheby's International Realty Affiliates LLC and used with permission. Sotheby's International Realty Affiliates LLC fully supports the principles of the Fair Housing Act and the Equal Opportunity Act. Each office is independently owned and operated.

Images, floorplans, and descriptions in this brochure are for illustrative purposes only and may not accurately reflect the current property. All dimensions are approximate and should be independently verified. This material does not form part of any contract or warranty. Prospective buyers are advised to conduct their own due diligence and seek independent legal advice.

Exclusively listed with
United Kingdom Sotheby's International Realty



Richard Cutt

+44 (0) 7765 220 529

RC@sothebysrealty.co.uk



Sarah Peck

+44 (0) 7300 237 507

spe@sothebysrealty.co.uk

United
Kingdom | Sotheby's
INTERNATIONAL REALTY