

REGENCY PARK CONDOMINIUM

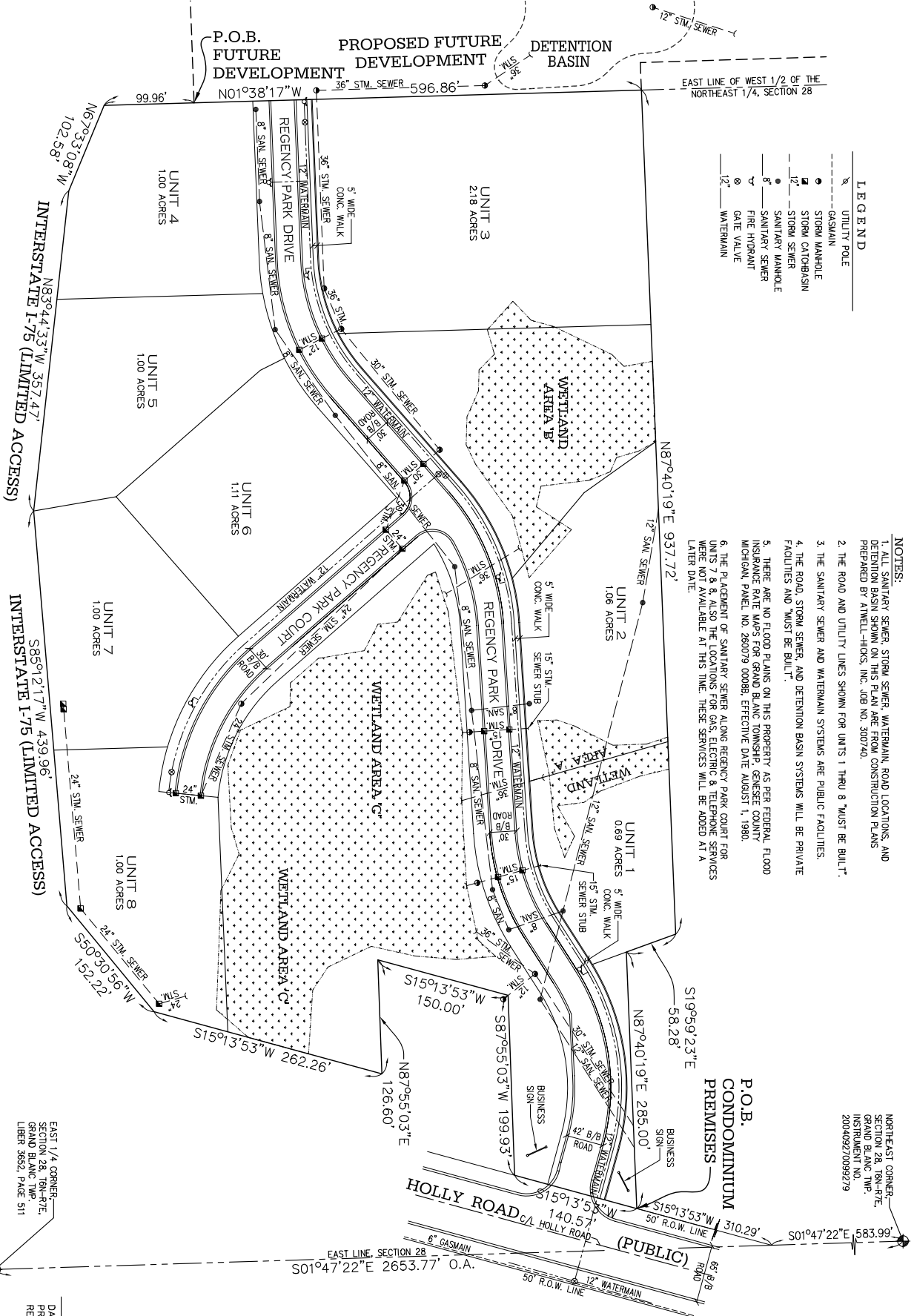
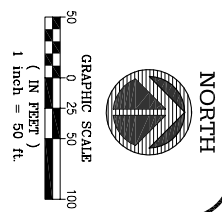
LEGEND

- 8" UTILITY POLE
- 8" GASMAIN
- STORM MANHOLE
- STORM CATCHBASIN
- 12" STORM SEWER
- SANITARY MANHOLE
- SANITARY SEWER
- FIRE HYDRANT
- GATE VALVE
- 12" WATERMAIN

- NOTES:
1. ALL SANITARY SEWER, STORM SEWER, WATERMAIN, ROAD LOCATIONS, AND DETENTION BASIN SHOWN ON THIS PLAN ARE FOR CONSTRUCTION PLANS PREPARED BY AMELT-HODGINS, INC. 059 NO. 300740.
 2. THE ROAD AND UTILITY LINES SHOWN FOR UNITS 1 THRU 8 MUST BE BUILT.
 3. THE SANITARY SEWER AND WATERMAIN SYSTEMS ARE PUBLIC FACILITIES.
 4. THE ROAD, STORM SEWER, AND DETENTION BASIN SYSTEMS WILL BE PRIVATE FACILITIES AND MUST BE BUILT.
 5. THERE ARE NO FLOOD PLANS ON THIS PROPERTY AS PER FEDERAL FLOOD INSURANCE POLICY MAPS FOR ROAD AND PROPERTY DAMAGE CONTROL (MICHIGAN, PANEL NO. 280079 0008B, EFFECTIVE DATE AUGUST 1, 1998).
 6. THE PLACEMENT OF SANITARY SEWER ALONG REGENCY PARK COURT FOR UNITS 7 & 8, ALSO THE LOCATIONS FOR GAS, ELECTRIC & TELEPHONE SERVICES WERE NOT AVAILABLE AT THIS TIME. THESE SERVICES WILL BE ADDED AT A LATER DATE.

NORTHEAST CORNER-
SECTION 28, 76N-47E,
GRAND BLANC TWP.,
INSTRUMENT NO.
200409270099279

P.O.B.
CONDOMINIUM
PREMISES



DATE: _____

DAVID J. KENNEY
PROFESSIONAL SURVEYOR
REGISTRATION NO. 39083

PROPOSED '02.16.06"

JOB NO. 301105
SCALE: HOR: 1"=50'

DEVELOPER:
SCM DEVELOPMENTS, INC.
5701 W. CENTER RD., SUITE 400
FLINT, MI 48907
PHONE: 810.232.1400

PART OF THE NORTHEAST 1/4
SECTION 28, 76N-47E
GRAND BLANC TWP., GENESEE CO., MI.



BM CONSTRUCTION CONSULTANTS
2182 MONROE STREET
FLINT, MICHIGAN 48932
PHONE: 810.232.1400
EMAIL: BMCONSTRUCTION@COMCAST.NET

REGENCY PARK CONDOMINIUM
UTILITY PLAN

REVISIONS	DATE	BY	APP'D BY	SHEET NO.
		J.R.B.		5
		J.R.B.		
		D.J.K.		
		D.J.K.		