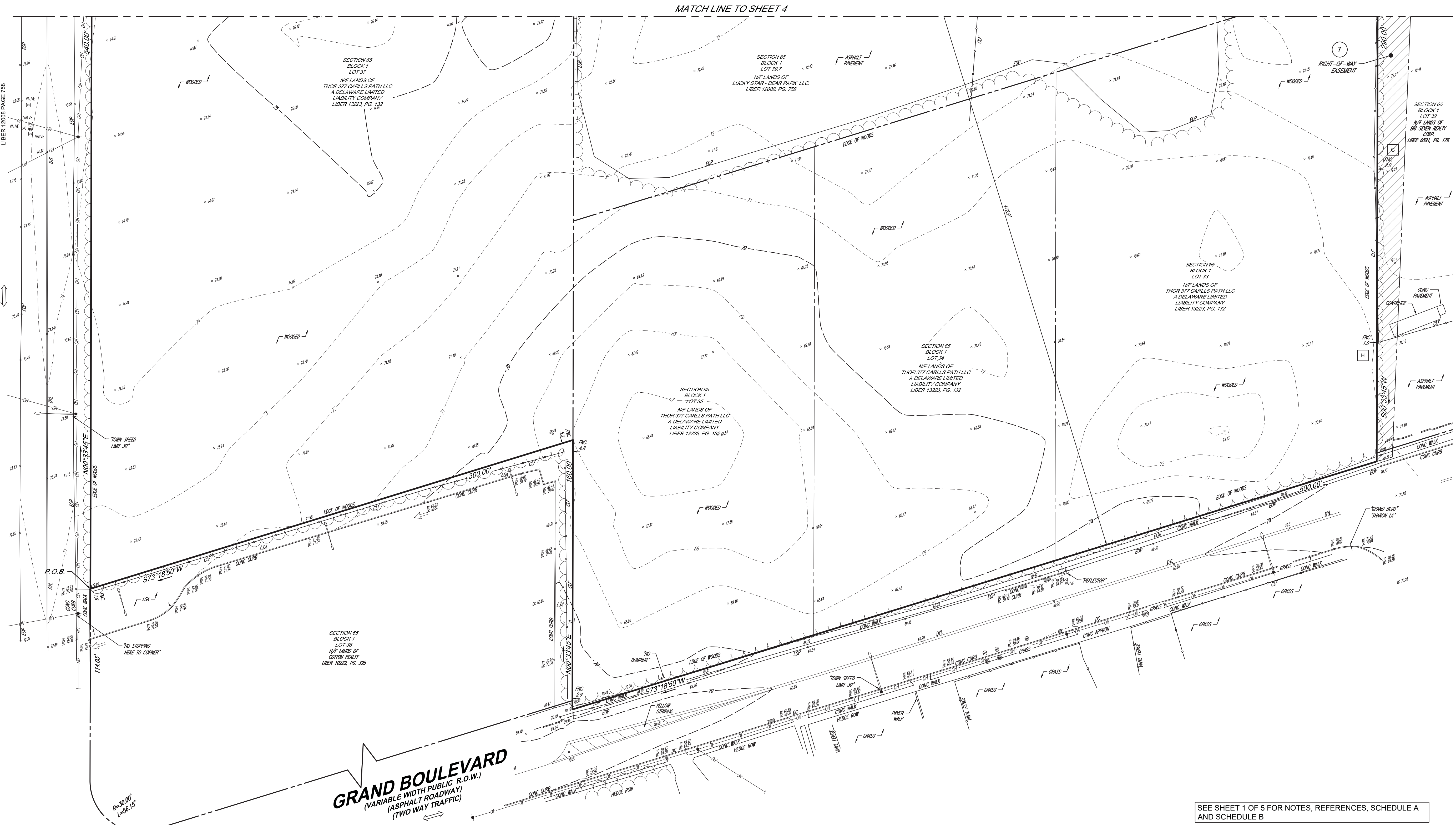


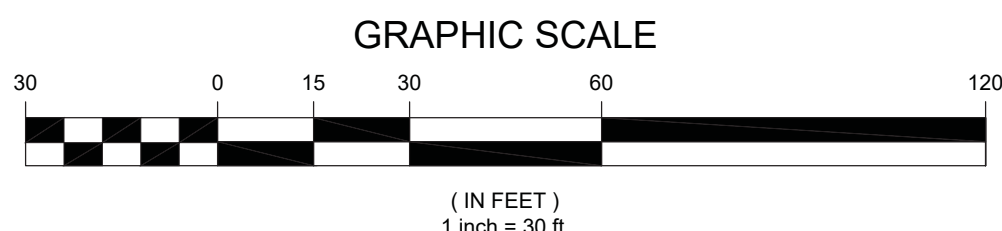
VICINITY MAP  
(NOT TO SCALE)

**CARLL'S PATH**  
(90' WIDE PUBLIC R.O.W.)  
(ASPHALT ROADWAY)  
(TWO WAY TRAFFIC)



MATCH LINE TO SHEET 4

**GRAND BOULEVARD**  
(VARIABLE WIDTH PUBLIC R.O.W.)  
(ASPHALT ROADWAY)  
(TWO WAY TRAFFIC)



CONTROL POINT ASSOCIATES, INC. ALL RIGHTS RESERVED. THIS IS A PROFESSIONAL ENGINEERING DESIGN. THE DESIGN IS THE PROPERTY OF CONTROL POINT ASSOCIATES, INC. AND IS NOT TO BE REPRODUCED OR TRANSMITTED IN ANY FORM OR BY ANY MEANS, ELECTRONIC OR MECHANICAL, INCLUDING PHOTOCOPYING, RECORDING, OR BY ANY INFORMATION STORAGE AND RETRIEVAL SYSTEM, WITHOUT THE WRITTEN PERMISSION OF CONTROL POINT ASSOCIATES, INC.

**LEGEND**

- |   |  |   |  |
|---|--|---|--|
| <ul style="list-style-type: none"> <li>- - - EXISTING CONTOUR</li> <li>• EXISTING SPOT ELEVATION</li> <li>- - - EXIST. TOP OF CURB ELEVATION</li> <li>- - - EXIST. BOTTOM OF CURB ELEVATION</li> <li>- - - EXIST. TOP OF WALL ELEVATION</li> <li>- - - EXIST. BOTTOM OF WALL ELEVATION</li> <li>- - - APPROX. LOC. UNDERGROUND ELECTRIC LINE</li> <li>- - - APPROX. LOC. UNDERGROUND NATURAL GAS LINE</li> <li>- - - APPROX. LOC. UNDERGROUND SANITARY LINE</li> <li>- - - APPROX. LOC. UNDERGROUND DRAINAGE LINE</li> <li>- - - APPROX. LOC. UNDERGROUND WATER LINE</li> <li>- - - SUBSURFACE UTILITY QUALITY LEVEL B</li> </ul> | <ul style="list-style-type: none"> <li>OH OVERHEAD WIRES</li> <li>DC DEPRESSED CURB</li> <li>HYDRANT</li> <li>UNKNWN VALVE</li> <li>SANITARY/SEWER MANHOLE</li> <li>DRAINAGE/STORM MANHOLE</li> <li>UNKNWN MANHOLE</li> <li>CATCH BASINS</li> <li>UTILITY POLE</li> <li>UTILITY POLE/LIGHT POLE/SOLAR PANEL</li> <li>STREET LIGHT</li> <li>TRAFFIC SIGNAL</li> </ul> | <ul style="list-style-type: none"> <li>PAINTED ARROWS</li> <li>SIGN</li> <li>BOLLARD</li> <li>AREA LIGHT</li> <li>PARKING SPACE COUNT</li> <li>CHAIN LINK FENCE</li> <li>DEPRESSED CURB</li> <li>EDGE OF CONC.</li> <li>EDGE OF PAVEMENT</li> <li>LANDSCAPED AREA</li> <li>SOLID WHITE LINE</li> <li>SOLID YELLOW LINE</li> </ul> | <ul style="list-style-type: none"> <li>DY DOUBLE YELLOW LINE</li> <li>SB STOP BAR</li> <li>UNKNWN TERMINUS</li> <li>FILLED w/WATER</li> <li>OFFSET OF STRUCTURE AT GROUND LEVEL RELATIVE TO PROPERTY LINE</li> <li>TITLE REPORT EXCEPTION</li> </ul> |
|---|--|---|--|

SEE SHEET 1 OF 5 FOR NOTES, REFERENCES, SCHEDULE A AND SCHEDULE B

THIS SURVEY IS CERTIFIED TO:  
 • DPI-ACRES CAPITAL LLC, ITS SUCCESSORS AND/OR ASSIGNS, AS THEIR INTEREST MAY APPEAR.  
 • STEWART TITLE INSURANCE COMPANY;  
 • ROYAL ABSTRACT OF NEW YORK LLC

THIS IS TO CERTIFY THAT THIS MAP OR PLAT AND THE SURVEY ON WHICH IT WAS BASED WERE MADE IN ACCORDANCE WITH THE 2021 MINIMUM STANDARD DETAIL REQUIREMENTS FOR ALTA/NSPS' LAND TITLE SURVEYS', JOINTLY ESTABLISHED AND ADOPTED BY ALTA AND NSPS, AND INCLUDES ITEMS 2, 3, 4, 5, 6 (A), 6 (B), 7 (A), 7 (B)(1), 7 (C), 8, 9, 11(A), 11(B), 13, 14, 15, 16, 17 AND 19 OF TABLE A THEREOF. THE FIELD WORK WAS COMPLETED ON AUGUST 1, 2024.

NOT A VALID ORIGINAL DOCUMENT UNLESS SIGNED AND SEALED

STATE OF NEW YORK  
 WILLIAM T. WHIMPLE  
 LICENSED LAND SURVEYOR  
 50526

WILLIAM T. WHIMPLE  
 NEW YORK PROFESSIONAL LAND SURVEYOR #050526  
 WWW.CPASURVEY.COM

8-19-2024  
 DATE

5	REVISED PER CLIENT COMMENTS (ADD. ITEMS)	N/A	M.W.	W.T.W.	08/19/2024
4	REVISED PER FIELD VISIT & NEW TITLE REPORT	K.L.	M.W.	W.T.W.	08/14/2024
3	ADDED CERTIFICATIONS	N/A	K.L.	GD	4/23/2023
2	LABELLED BEARING AND DISTANCE OF LOTS 35 & 39.7	N/A	K.L.	GD	3/29/2023
1	REVISED PER RECEIPT OF ADDITIONAL DOCUMENTS	N/A	M.W.	GD	11/11/2022
No.	DESCRIPTION OF REVISION	FIELD CREW	DRAWN	APPROVED	DATE
FIELD DATE	2022-04-07				
FIELD DATE	2024-08-01				
FIELD BOOK NO.	LI-22				
FIELD BOOK PG.	77				
FIELD CREW	A.C./K.L.				
DRAWN	M.W.				
REVIEWED	G.D.	APPROVED	W.T.W.	DATE	04-18-2022
SCALE	1" = 30'	FILE NO.	07-210131-01	DWG. NO.	5 OF 5

ALTA/NSPS LAND TITLE SURVEY  
 DISTRICT 100, SECTION 65, BLOCK 1, LOTS 33, 34, 35, 37, 39.7 & 39.8  
 377 CARLL'S PATH  
 DEER PARK, TOWN OF BABYLON  
 SUFFOLK COUNTY, STATE OF NEW YORK

**CONTROL POINT ASSOCIATES, INC. P.C.**  
 375 BROAD HOLLOW RD., SUITE 11110  
 MELVILLE, NY 11747  
 631.580.2645 • 908.668.9595 FAX  
 WWW.CPASURVEY.COM

WARREN, NJ 08063-0000  
 NEW YORK, NY 10001-0000  
 MANHATTAN, NY 10001-0000  
 SOUTH PLAINFIELD, NJ 07080-0000  
 ALBANY, NY 12212-0000  
 PHILADELPHIA, PA 19103-0000  
 HUNTSVILLE, AL 35894-0000  
 FT. LAUDERDALE, FL 33409-0000