

EXPRESS CAR WASH + PROPERTY Near Major Intersection

Express Car Wash • Solar Panels



Bashir Tariq 951-269-3000

BashirTariq@msn.com

DRE# 01851484



OFFERING SUMMARY

Location

Bubble Zone Express Car Wash

318 W Shannon Pkwy
Visalia CA 93291

Offering Summary

Price **\$6,999,900**

Building Size 4,500 SF
Lot Size 30,056 SF .69 acres
Year Built 2022
Tunnel 100 FT
Vacuums 14
Blow Dryers 13 - 15hp each
2 DRB Dual Lane Patheon System w/License Plate Recognition
Solar Panels 37.80 KW Grid, Structure Mount Solar Panels

Property included APN# 079-071-036-000

- MOBIL CAR WASH and Mobil Auto Detail Included
- FLEX CAR WASH AND DETAILING OPTION AVAILABLE:
FULL SERVICE AND EXPRESS CAR WASH COMBINATION
- SOLAR PANELS



INVESTMENT HIGHLIGHTS

PRIME LOCATION, NEAR MAJOR INTERSECTION ACROSS FROM COMMUNITY SHOPPING CENTER

Investment Highlights

- Bubble Zone Express Car Wash was developed from the ground up in late 2022 and features premium equipment manufactured by NCS (formerly McNeil Systems)
- Excellent opportunity to transition into a **Flex Car Wash Model by combining Express and Full-Service offerings**
Flex Car Wash Model by offering, multiple service levels, premium packages with auto detail offerings, maximize revenue streams, higher average ticket per car and customer retention.
- A Hands-On Owner/Operator can further increase profitability by actively managing operations, controlling labor costs, improving service quality and expanding monthly membership subscriptions through direct customer engagement and local marketing initiatives.
- The property's infrastructure provides a strong foundation for a Flex Car Wash operation, creating significant upside for an experienced owner seeking to increase sales, customer retentions and over all overall cash flow
- The current owner resides more than 200 miles from the business and has been unable to provide the day-to-day oversight and hands-on management necessary to maximize the car wash's performance. This presents a significant opportunity for an owner-operator with local management team to improve operations, offer Flex Car Wash Services, increase revenues, membership, enhance customer service, and increase overall profitability.
- Previously Car Wash offered Mobile Washing and Detailing Services. Currently Mobile Wash is inactive and presents an immediate opportunity for a hands-on operator to reactivate and expand revenue streams
- Located in a rapidly growing market with ongoing residential development, multiple new housing projects by D.R Horton, Lennar, Trumark, Woodside and many other developers. New Retail and Commercial Centers and Industrial expansions
- The real property was appraised in September 2022 at approximately \$5,890,000. Seller estimates the value of the business operations, equipment, and goodwill at approximately \$3,100,000
- Strong demographics support long-term growth, with a population exceeding 146,000 residents within a 5-mile radius and approximately 55,830 daytime employees

Value-Add Opportunities

- Expand monthly membership programs. Reactivate Mobile Wash Services
- Improve local management and customer engagement
- Capitalize on increasing employment from industrial developments
- Bubble Zone Express Car Wash presents a rare opportunity to acquire a modern, ground-up developed express wash facility in a rapidly expanding Central Valley market with substantial upside through active ownership, membership growth, mobile services, and operational enhancements
- Introducing Full-Service/Flex Car Wash operations
- Leverage continued residential and commercial growth
- Add detailing, fleet accounts, and corporate washing programs

Industrial Expansion

- One of the most significant economic developments in the region is the CapRock Central Point project in northwest Visalia
- Master-planned industrial park designed to deliver millions of square feet of warehouse and distribution space. Includes a planned 1.27 million square-foot distribution facility
- Expected to generate substantial employment opportunities and increased economic activity throughout the region
- Representing one of the largest industrial developments currently underway in California's Central Valley

Retail, Commercial & Residential Expansion

- Visalia continues to experience strong residential, commercial, and economic growth, making it one of California's emerging Central Valley markets
The city remains relatively affordable compared to many coastal California communities, attracting new residents, businesses, and investment
- Several national retailers and restaurants have recently opened or announced locations in the Visalia market, including: CarMax, ALDI, Les Schwab Tire Centers, Tractor Supply Company, Grocery Outlet, Burlington, Hilton Garden Inn
- Major commercial developments currently moving forward a Sam's Club with around 172,000 SF warehouse and 28 fuel station

EXTERIOR VIEWS



EXTERIOR - SOLAR PANEL VIEWS



ENTRANCE AND TUNNEL VIEWS



EXTERIOR - SOLAR PANEL VIEWS

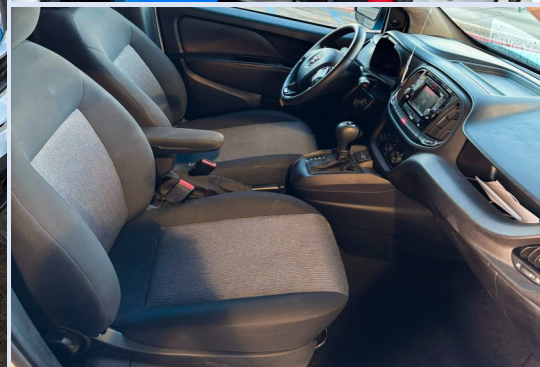


Grand opening picture 08/2022

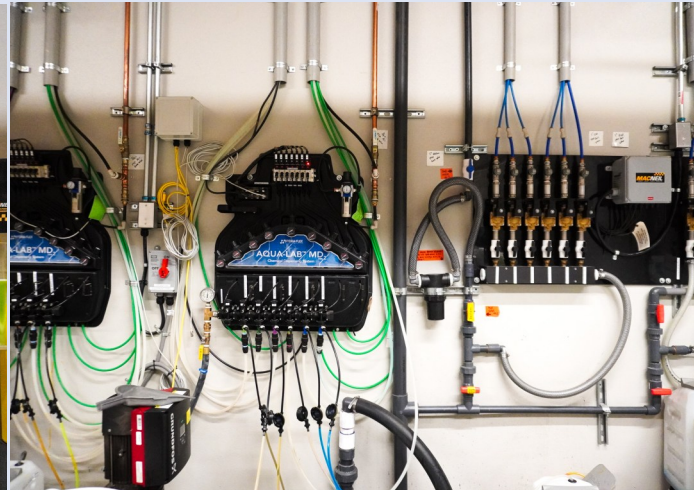
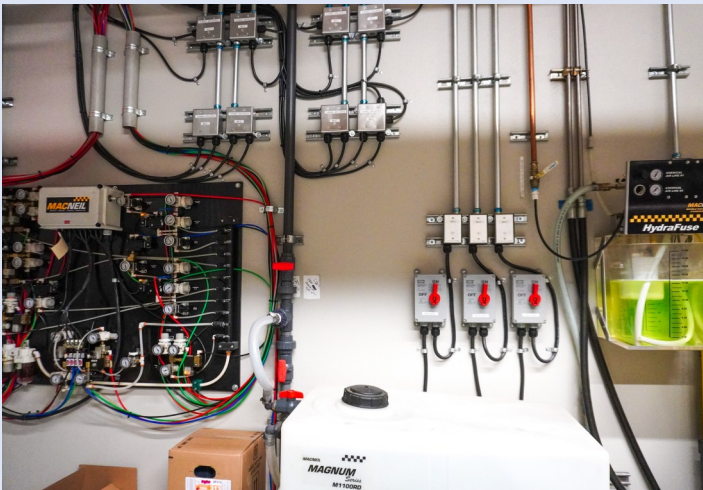
SOLAR PANELS AND TUNNEL VIEWS



MOBIL CAR WASH - MOBIL DETAIL



EQUIPMENT AND TECH ROOM



NIGHT VIEWS



DEMOGRAPHICS

SNAPSHOT



146,226

POPULATION 5 mile



\$92,010

INCOME 5 mile



\$295,506

HOME VALUE 5 mile



12,249

TRAFFIC Vehicles Per Day

Information has been secured from several sources. All viewers are advised they must verify with their own advisors, experts, consultants and resources for the accuracy and up to date information. We make no representations or warranties, express or implied as to the accuracy of the information. Viewers bear all risk for any inaccuracies

	3 miles	5 miles	10 miles
POPULATION			
2024 Population	68,541	146,226	202,537
Median Age	32.6	34.3	34.2
Bachelors' Degree Higher Education	20%	22%	20%
INCOME			
Average House Income	\$86,518	\$92,010	\$91,643
HOUSING			
Median Home Value	\$303,748	\$295,506	\$295,071
Median Home Year Built	1987	1986	1987
HOUSEHOLDS			
2024 Households	21,237	47,852	65,099
Average Household Size	3.1	3	3
Average Household Vehicles	2	2	2
HOUSING OCCUPANCY			
Owner Occupied Households	61%		
Renter Occupied Households	39%		
DAYTIME EMPLOYMENT			
Employees	27,894	55,830	78,697
Businesses	3,771	7,182	9,538
TRAFFIC			
W Riggin Ave and n Conyer St W	12,249	2025	
W Rigger Ave and M Giddings Ave W	11,325	2025	
E Riggin Ave and W Riggin Ave W	7,304	2025	

AREA OVERVIEW

VISALIA, CA

Visalia (/ˈvaɪˈseɪljə, vɪ-vy-saɪl-yə, vɪh-^[9]^[10]) is a city in the agricultural San Joaquin Valley of California. The population was 141,384 as per the 2020 census. Visalia is the fifth-most populous city in the San Joaquin Valley, the 38th most populous in California, and 183rd in the United States.^[14] As the county seat of Tulare County, Visalia serves as the economic and governmental center to one of the most productive agricultural counties in the country.

The highest point in the Visalia–Porterville area is Mount Whitney.^[28] Located at the far reaches of the Sierra Nevada roughly 58 mi (93 km) east of the city, it reaches a height of 14,505 ft (4,421 m), and was long famous as the highest mountain in the lower 48 states. The hilliest parts of the Visalia area are the Venice Hills and the entire Sierra Nevada foothills east of the city. Four main streams run through the city. The major stream is the St. John's River, which begins at the diversion dam in the Kaweah River and is largely seasonal. The others are Mill Creek, Cameron Creek, and Packwood Creek. Many smaller creeks also flow through the city. The Friant-Kern Canal runs just east of the city along the western edge of the Sierra Nevada foothills.

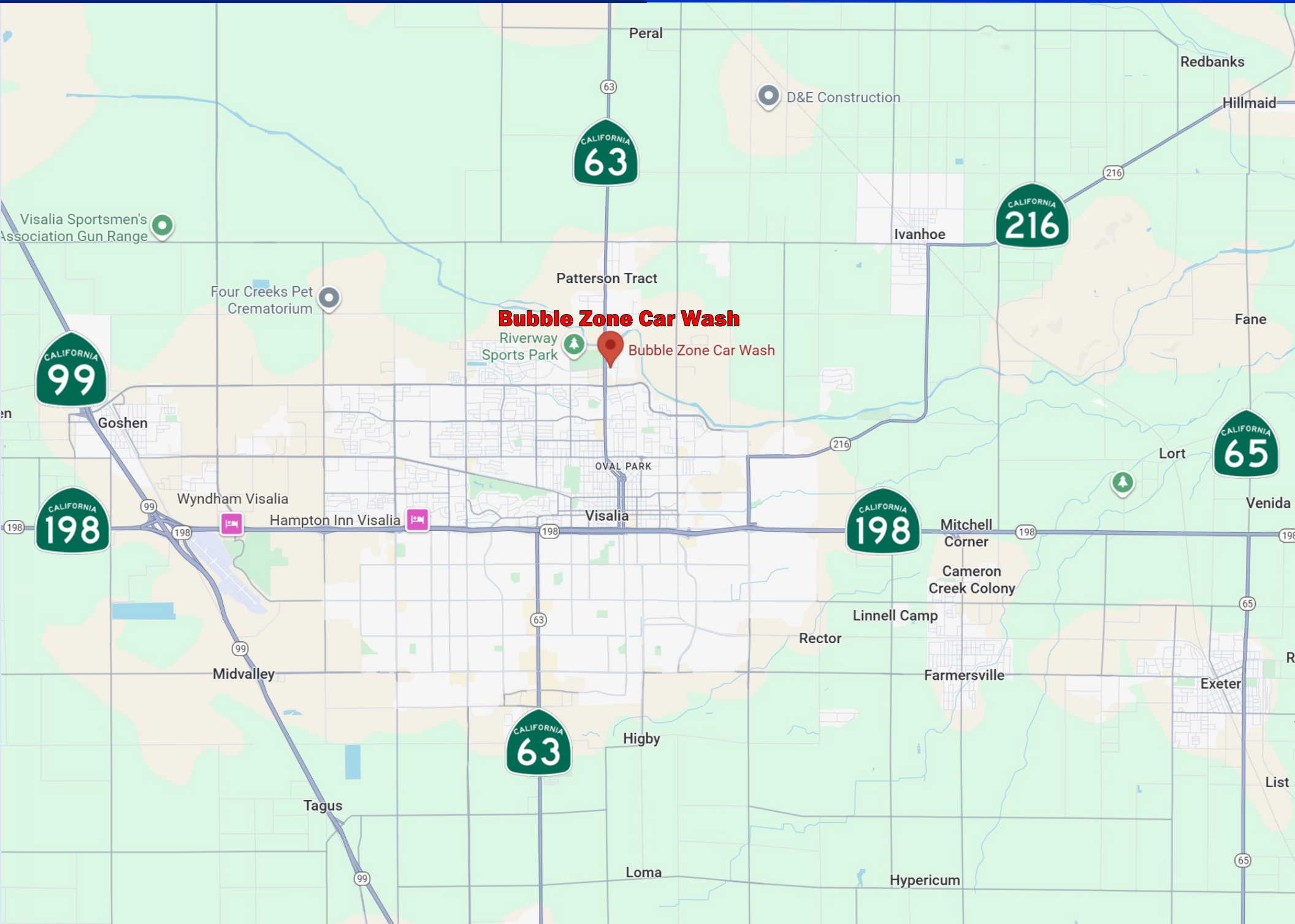
The city is divided into neighborhoods, some of which were incorporated places or communities. Also, several independent cities around Visalia are popularly grouped with the city of Visalia, due to its immediate vicinity. Generally, the city is divided into these areas: Downtown Visalia, North Visalia, the Eastside, Southwest Visalia, the Industrial Area, Mooney, and the Westside.

The economy of Visalia is driven by agriculture (especially grapes, olives, cotton, citrus, and nursery products), livestock, and distribution and manufacturing facilities (electronics and paper products are significant manufacturing sectors). Light manufacturing and industrial/commercial distribution represent the fastest growing portion of Visalia's employer base.

THINGS TO SEE & DO IN VISALIA AND VICINITY



REGINAL MAP



Confidentiality & Disclaimer

Presented By:



Bashir Tariq

DRE# 01851484 | C21 Corp DRE# 01849354

C21 Commercial Director:

Business Sales and Commercial Real Estate

15335 Fairfield Ranch Rd, Suite 100, Chino Hills CA 91709

Direct: 951-269-3000 | BashirTariq@msn.com



Each party is advised to consult their own advisors, consultants, experts to conduct its own independent investigation and due diligence

This Offering Memorandum has been provided to you as a short overview of the business and/or property details. It does not provide a complete and thorough description of the business and/or property and does not include all the information and details that a buyer may require to make an informed decision regarding the purchase of such business and/or property. The buyer must do his or her own due diligence and must take appropriate steps to verify all necessary details. Such steps must include using buyer's own sources to inspect and investigate all the details; to verify and analyze any and all information by consulting with all appropriate professionals; and obtaining, reading, and understanding all relevant reports, documents, and materials regarding rules, regulations, financial statements, environmental assessments, and whatever else may be available. C21 Commercial does not serve as a financial advisor to any party regarding any proposed transaction. Each party is advised to check with authority's all license, permits, DLSE, bond, insurance requirement before the purchase and after close of escrow requirements. Some businesses may require special license and permits.

C21 Professional and any and all persons and entities associated and affiliated with C21 Professional make no warranties, express or implied, regarding the accuracy and completeness of the information provided, whether written or verbal. No warranties, express or implied, are made regarding the current or future performance of the business and/or property in terms of income, expenses, sales, value, and overall current or future physical and financial health. No warranties are made regarding compliance to any and all Federal, State, and local regulations, requirements, and permits. No warranties are made regarding the physical condition of the premises. No warranties are made regarding any tenants, if present, or continued occupancy of the premises. Under no circumstances will KW Professional and any and all of its affiliates be liable for anything or have any legal obligation or commitment of any kind whatsoever by reason of this Offering Memorandum or any other communication related to this Offering Memorandum, written or verbal.

This Offering Memorandum does not indicate any changes that may have transpired since it was prepared. All information contained herein are subject to change without notice. Additional information will be made available to qualified buyers, along with arrangements to inspect the business and/or property. All communication must be kept limited to the assigned agent representing C21 Professional, and only to the agent. Buyer must not communicate with the owner, staff, employees, or the management in reference to the sale of the business and/or property, while visiting or prior to purchasing.

All data and assumptions regarding financial performance, including that used for financial modeling purposes, may differ from actual data or performance. Any estimates of market rents and/or projected rents that may be provided to a party do not necessarily mean that rents can be established at or increased to that level. Parties must evaluate any applicable contractual and governmental limitations as well as market conditions, vacancy factors and other issues in order to determine rents from or for the property. Legal questions should be discussed by the party with an attorney. Tax questions should be discussed by the party with a certified public accountant or tax attorney. Title questions should be discussed by the party with a title officer or attorney. Questions regarding the condition of the property and whether the property complies with applicable governmental requirements should be discussed by the party with appropriate engineers, architects, contractors, other consultants, and governmental agencies. All properties and services are marketed by KW Commercial in compliance with all applicable fair housing and equal opportunity laws



BASHIR TARIQ

951-269-3000

BashirTariq@msn.com

DIRECTOR

Business Sales and Commercial Real Estate

C 21 Commercial | Masters

CA-DRE# 01851484

15335 Fairfield Ranch Rd, Suite 100, Chino Hills, CA 91709

BUY - SELL - LEASE - INVEST

Call now for Consultation and Professional Representation

All types of Business Sales, Purchases, Commercial Properties, Investments and Leases

- Car Washes - Gas Stations
- Restaurants - Fast Foods
- Retail Shopping Centers
- Apartments-Hotels-Motels
- Truck Wash and Stops
- Franchise Businesses
- Auto Service Centers
- Investment Properties
- Car Lots - Land - Vacant Lots - Warehouses
- Liquor Stores and Convenience Markets
- Service - Technical based Businesses
- Retail Stores, or Any Business that you own

I can help you Sell any Business that you own or help you Purchase the dream business you been waiting for

C 21 GRAND CENTURIAN AWARD Winner ● **KW: THE MILLION DOLLAR CLUB**, Southern CA Regional, Top Market and Multiple other Awards Winner ● **RE/MAX Platinum Club Award Winner**



Business Owner, Operator, Innovator,
Investor, Developer, Consultant,
Built Car Washes with Gas Stations

Developed and Turned Closed, NON performing
Car Washes into the Highest and Best Operating
Car Washes in the Car Wash industry

Member of: ICA, WCA, ICSC NAR, C.A.R, RIAOC, RCAOC

