

200 North Brady Street
DuBois, PA 15801

FOR LEASE



Located on a corner lot downtown at signal on Rt 219. with high daily traffic count.

Convenient to DuBois City Park, recreational state-of-art baseball fields, DuBois Area Schools, Sheetz fuel station/convenience store, Beaver Meadow Walkway, and more.

200 North Brady Street, DuBois, PA 15801



Zoning: Commercial Hwy
Taxes: \$8,680 (2025)

Gross Land Area: .79 acres
Gross Rentable Area: 3,696 SF
Year Built: 1976
Parking: 30 On-site spaces

Roof: Asphalt
HVAC: Gas Forced Air
AC: Roof top unit (2012)
Misc.: Drive Through window

Construction: Reinforced concrete foundation, steel frame; brick walls, wood floor structure, textured and painted drywall



200 North Brady Street, DuBois, PA 15801

Data Sheet

Property Data Sheet

Lot and Block No:	0072-005-000-01201/ 0072-005-000-01202/ 0072-005-000-0206/ 0072-005-000-0128/ 0072-005-000-01210/ 0072-005-000-01211
Owner of Record:	Z2 Plaza Ltd.
Zoning:	C- Commercial
Type:	Commercial – former Retail Bank
Gross Land Area:	Approximately 0.79 Acres
Gross Building Area:	Approximately 3,696 SF
Gross Leasable Area:	Approximately 3,696 SF
Year Built:	Built 1976
Construction Type & Finish:	Masonry construction with brick exterior
Parking Area:	30 on-site parking spaces
Roof:	Asphalt Roof
Mechanical Systems/HVAC:	Roof Top Mounted HVAC unit installed 04/30/12 (annually serviced; good working order)
Utility Companies:	
Water/Sewer:	City of DuBois
Electric:	Penelec
Gas:	National Fuel
Real Estate Taxes:	\$ 8,680 (2025)

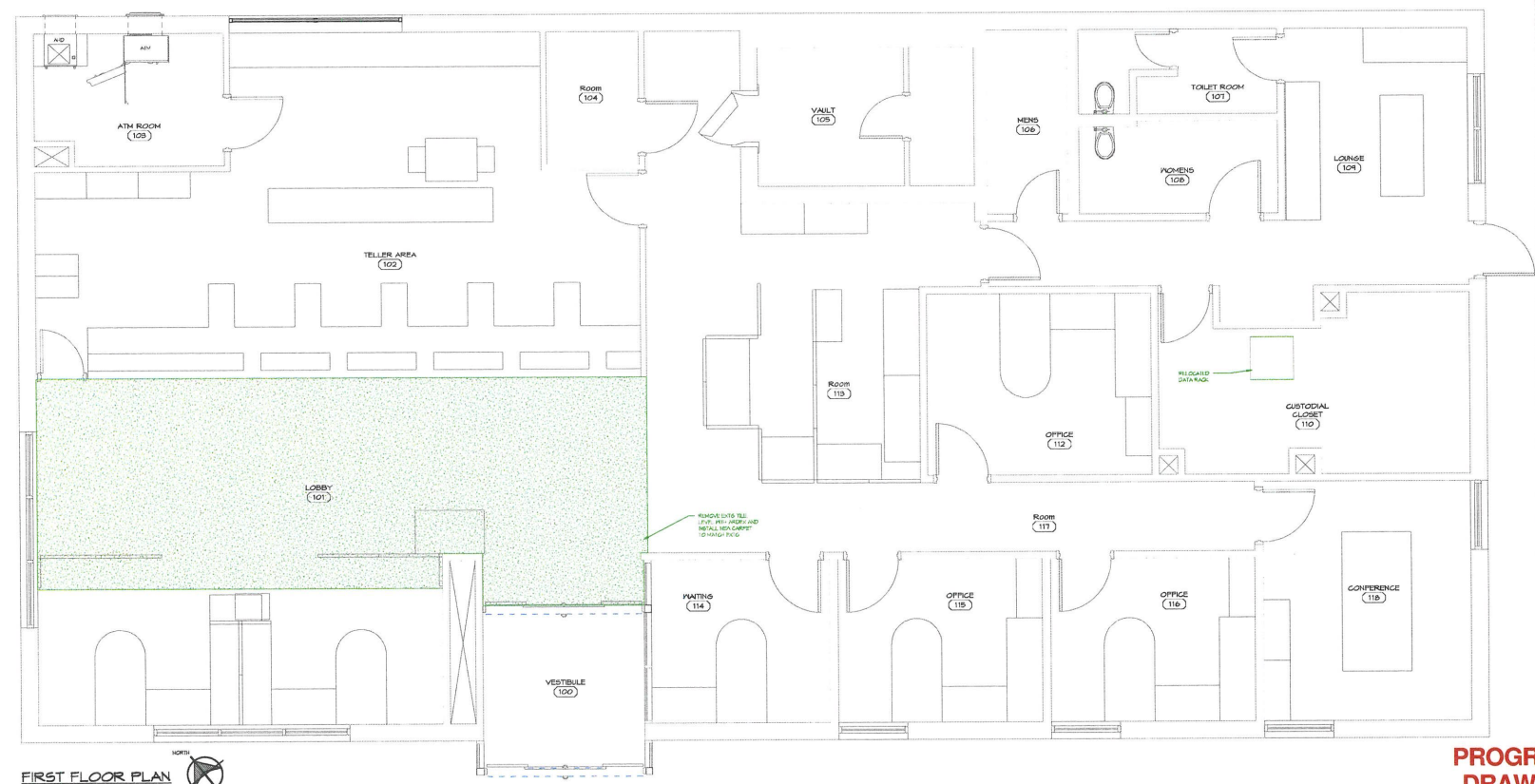
TEST FIT FOR THE
PNC DUBOIS
 200 NORTH BRADY STREET
 DUBOIS, PENNSYLVANIA 15801

SHEET NAME
 FIRST FLOOR PLAN

REVISIONS

SEPTEMBER 14, 2016

A100



FIRST FLOOR PLAN
 SCALE: 3/8" = 1'-0"
 NOTES:
 *NOT ALL FINISH TYPICAL, PNC COLORS

**PROGRESS
 DRAWING**

15/09/2016 10:58 AM
 P:\Projects\2016\15092016\15092016.dwg
 PNC DUBOIS
 FIRST FLOOR PLAN
 A100