

# LAYTON TRIPLE POINT WAREHOUSE

FOR LEASE



Lease Price: \$1.35/SF Modified Gross

## PROPERTY DETAILS

887 N. McCormick Way, Layton, UT 84041

- Unit 4: 2,670 SF available
- One 12' ground level door
- 13' clear height
- Zoned M-2
- Utilities are separately metered and paid by tenant
- Easy access to I-15

### SURROUNDING TENANTS



## 2025 DEMOS



### EST. POPULATION

1 MILE » 9,828  
3 MILE » 100,132  
5 MILE » 192,795



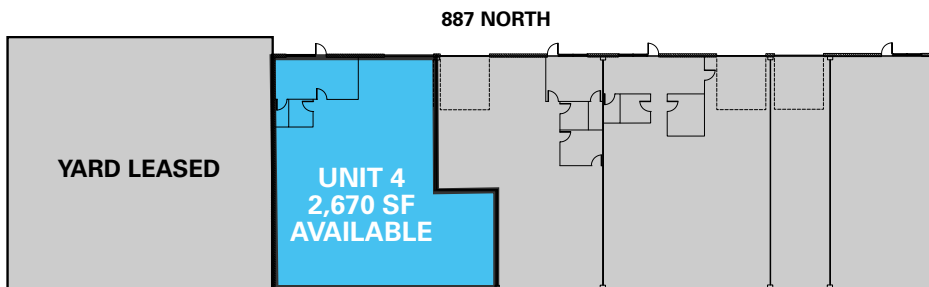
### EST. HOUSEHOLDS

1 MILE » 3,495  
3 MILE » 33,393  
5 MILE » 62,342



### EST. AVERAGE HH INCOME

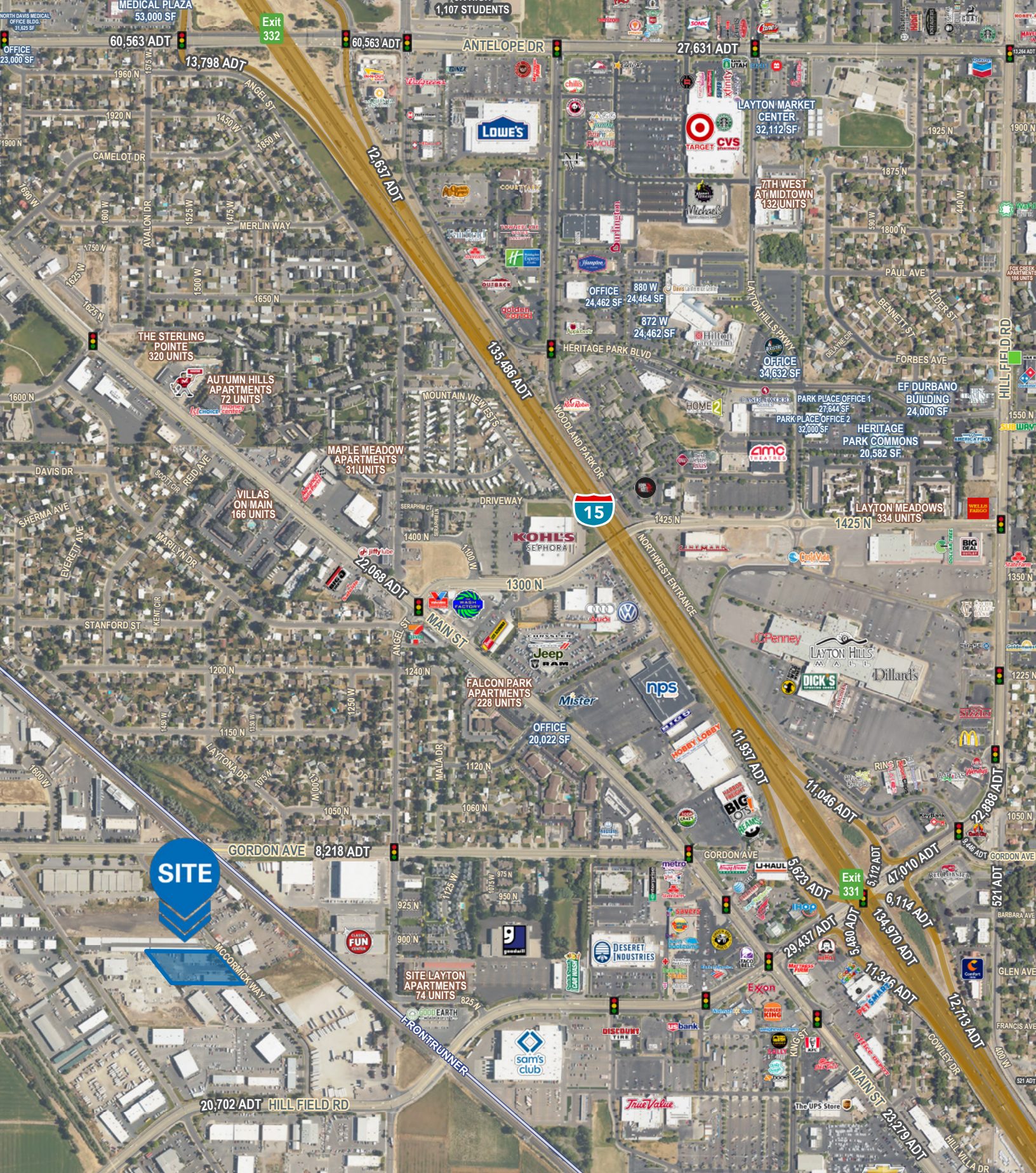
1 MILE » \$101,344  
3 MILE » \$123,506  
5 MILE » \$135,987



**CHRIS FALK, CCIM, SIOR**  
cfalk@newmarkmw.com  
direct 801.499.6514  
[View Profile](#)

**BRANSON WOOD**  
bwood@newmarkmw.com  
direct 801.510.5207  
[View Profile](#)

**FULL SERVICE  
COMMERCIAL REAL ESTATE**  
1410 S University Park Blvd, Ste 120  
Clearfield, Utah 84015  
Office 801.578.5580  
[www.newmarkmw.com](http://www.newmarkmw.com)



**CHRIS FALK, CCIM, SIOR**  
 cfalk@newmarkmw.com  
 direct 801.499.6514  
[View Profile](#)

**BRANSON WOOD**  
 bwood@newmarkmw.com  
 direct 801.510.5207  
[View Profile](#)

**FULL SERVICE  
 COMMERCIAL REAL ESTATE**  
 1410 S University Park Blvd, Ste 120  
 Clearfield, Utah 84015  
 Office 801.578.5580  
[www.newmarkmw.com](http://www.newmarkmw.com)