

FOR LEASE

2,175 RSF | \$2.60/SF/MO. NNN

Office Suite with Panoramic River Views

1005 SW Disk Dr., Suite 101, Bend, OR 97702



SUITE LOCATED IN COVETED DESCHUTES RIDGE BUSINESS PARK



Jay Lyons, SIOR, CCIM | Grant Schultz, SIOR, CCIM

600 SW Columbia St., Ste. 6100 | Bend, OR 97702

541.383.2444 | www.CompassCommercial.com

COMPASS
COMMERCIAL

REAL ESTATE
SERVICES

FOR LEASE

\$2.60/SF/MO. NNN

Office Suite with Panoramic River Views

PROPERTY DETAILS

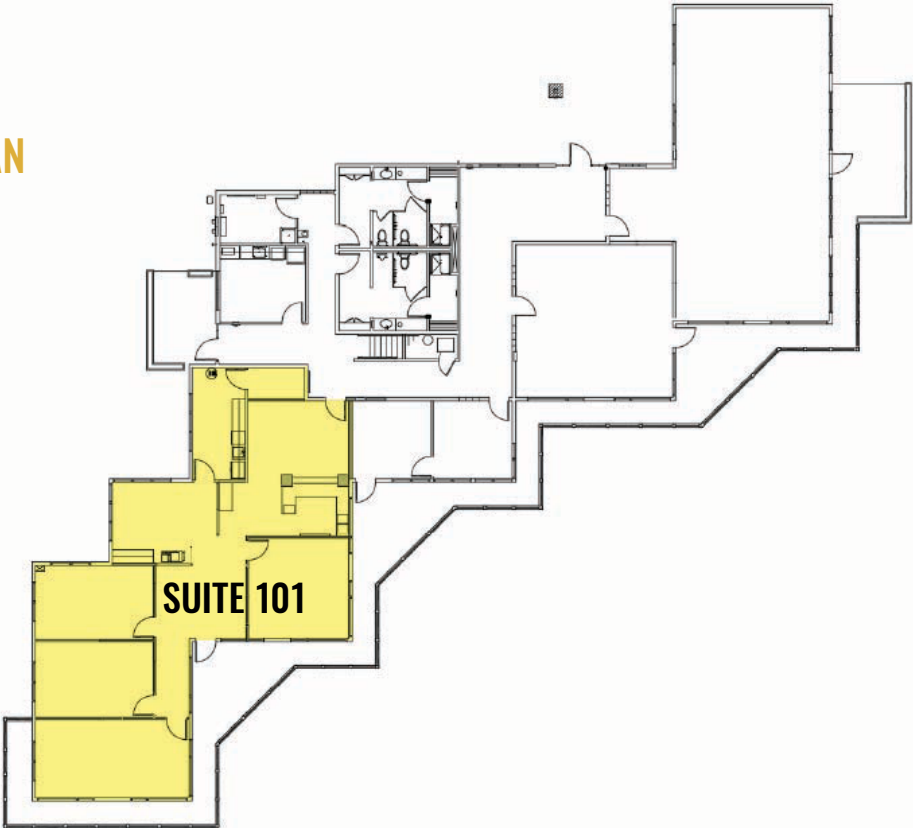
Suite 101:	2,175 RSF
Lease Rate:	\$2.60/SF/Mo. NNN
CAMs:	Est. at \$0.99/SF/Mo. <i>(gas and electricity included)</i>
Bldg. Size:	4,754 SF
Lot Size:	3.72 AC
Year Built:	1985
Zoning:	Mixed-Use Riverfront (MR)
Date Avail.:	May 1, 2026

HIGHLIGHTS

- Suite 101 features a reception area, break room, open work space and four private offices
- High end finishes throughout the space
- River views and outdoor patio
- Near the stairs leading down to the Deschutes River Trail
- Great access to downtown and the Old Mill District
- Ample parking available



FLOOR PLAN

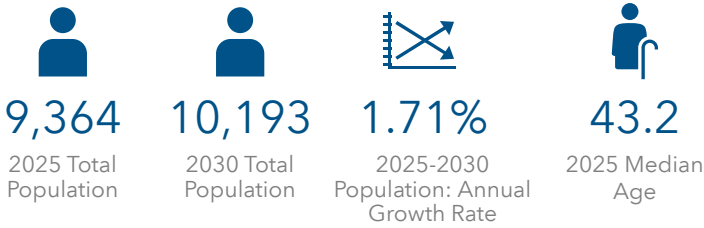


FOR LEASE

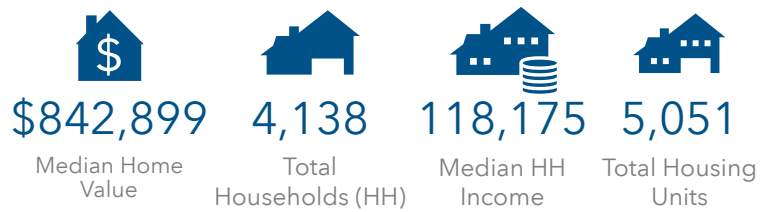
1005 SW Disk Dr., Bend, OR 97702

DEMOGRAPHICS - WITHIN A 1-MILE RADIUS

POPULATION STATS



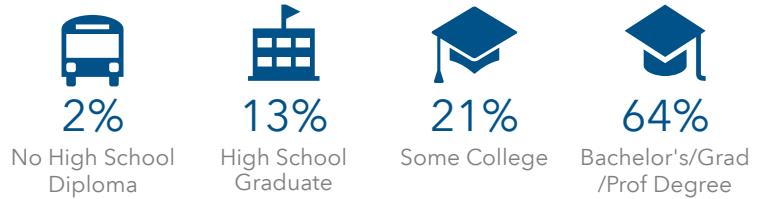
2025 HOUSING STATS



2025 BUSINESS STATS



2025 EDUCATION STATS



Brokers are licensed in the state of Oregon. This information has been furnished from sources we deem reliable, but for which we assume no liability. This is an exclusive listing. The information contained herein is given in confidence with the understanding that all negotiations pertaining to this property be handled through Compass Commercial Real Estate Services. All measurements are approximate.



Jay Lyons, SIOR, CCIM
Partner, Principal Broker
Cell 541.410.6519
jlyons@compasscommercial.com



Grant Schultz, SIOR, CCIM
Broker
Cell 541.480.9873
gschultz@compasscommercial.com

COMPASS
COMMERCIAL

REAL ESTATE SERVICES