

# Medical Office Space



**907 N Elm**  
Hinsdale, Illinois 60521

## PROPERTY DETAILS

- 3-story, 32,000 square foot building
- Flexible suite sizes available
- Exclusive 100% medical tenancy, creating the premier medical campus in Hinsdale
- Adjacent to the newly completed Hinsdale Surgical Center located on campus
- Adjacent to UChicago Medicine Advent Health Cancer Institute
- 1 mile from UChicago Medicine Advent Health Hinsdale Hospital
- Great access via full-interchange at Ogden and I-294

## Contact

Brian Edgerton  
+1 630 693 0671  
bedgerton@hiffman.com

Adam Johnson  
+1 630 317 0729  
ajohnson@hiffman.com

Tom Gnadt  
+1 630 693 0659  
tgnadt@hiffman.com

[PROPERTY WEBSITE](#)

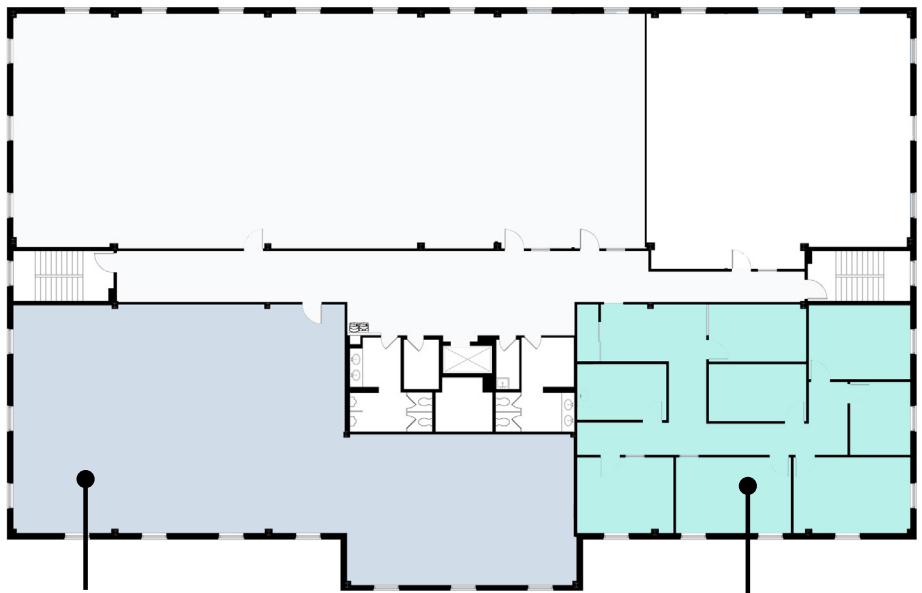
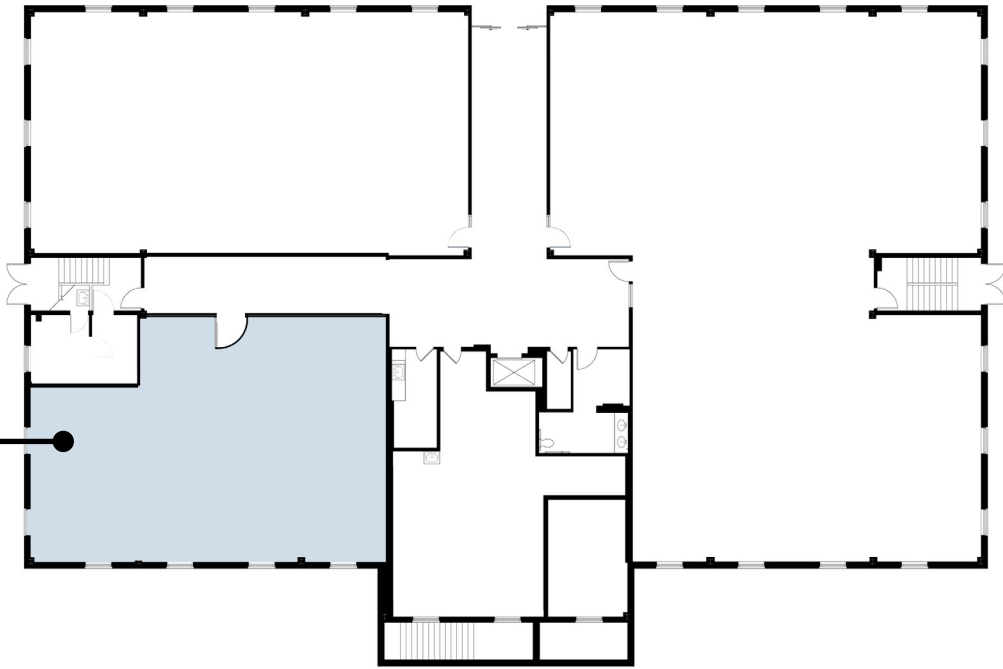


One Oakbrook Terrace  
Suite 600  
Oakbrook Terrace, Illinois 60181  
+1 630 932 1234

[hiffman.com](http://hiffman.com)

NO WARRANTY OR REPRESENTATION, EXPRESS OR IMPLIED, IS MADE AS TO THE ACCURACY OF THE INFORMATION CONTAINED HEREIN, AND THE SAME IS SUBMITTED SUBJECT TO ERRORS, OMISSIONS, CHANGE OF PRICE, RENTAL OR OTHER CONDITIONS, PRIOR SALE, LEASE OR FINANCING, OR WITHDRAWAL WITHOUT NOTICE, AND OF ANY SPECIAL LISTING CONDITIONS IMPOSED BY OUR PRINCIPALS NO WARRANTIES OR REPRESENTATIONS ARE MADE AS TO THE CONDITION OF THE PROPERTY OR ANY HAZARDS CONTAINED THEREIN ARE ANY TO BE IMPLIED.

Suite 102  
2,074 SF



Suite 208  
3,347 SF

Suite 206  
2,301 SF

5,648 SF  
contiguous



One Oakbrook Terrace  
Suite 600  
Oakbrook Terrace, Illinois 60181  
+1 630 932 1234