

**601 SAINT MARYS STREET**  
RALEIGH, NC

**PREMIERE OFFICE  
SPACE FOR LEASE**

**NEAR GLENWOOD SOUTH &  
THE VILLAGE DISTRICT**

---

**AGENT**

Peter Pace, SIOR  
[peterpace@yorkproperties.com](mailto:peterpace@yorkproperties.com)  
919.645.2770

---

**york**

# PROPERTY DESCRIPTION

## OFFICE FOR LEASE

### AVAILABILITY

± 4,704 RSF

Available Now

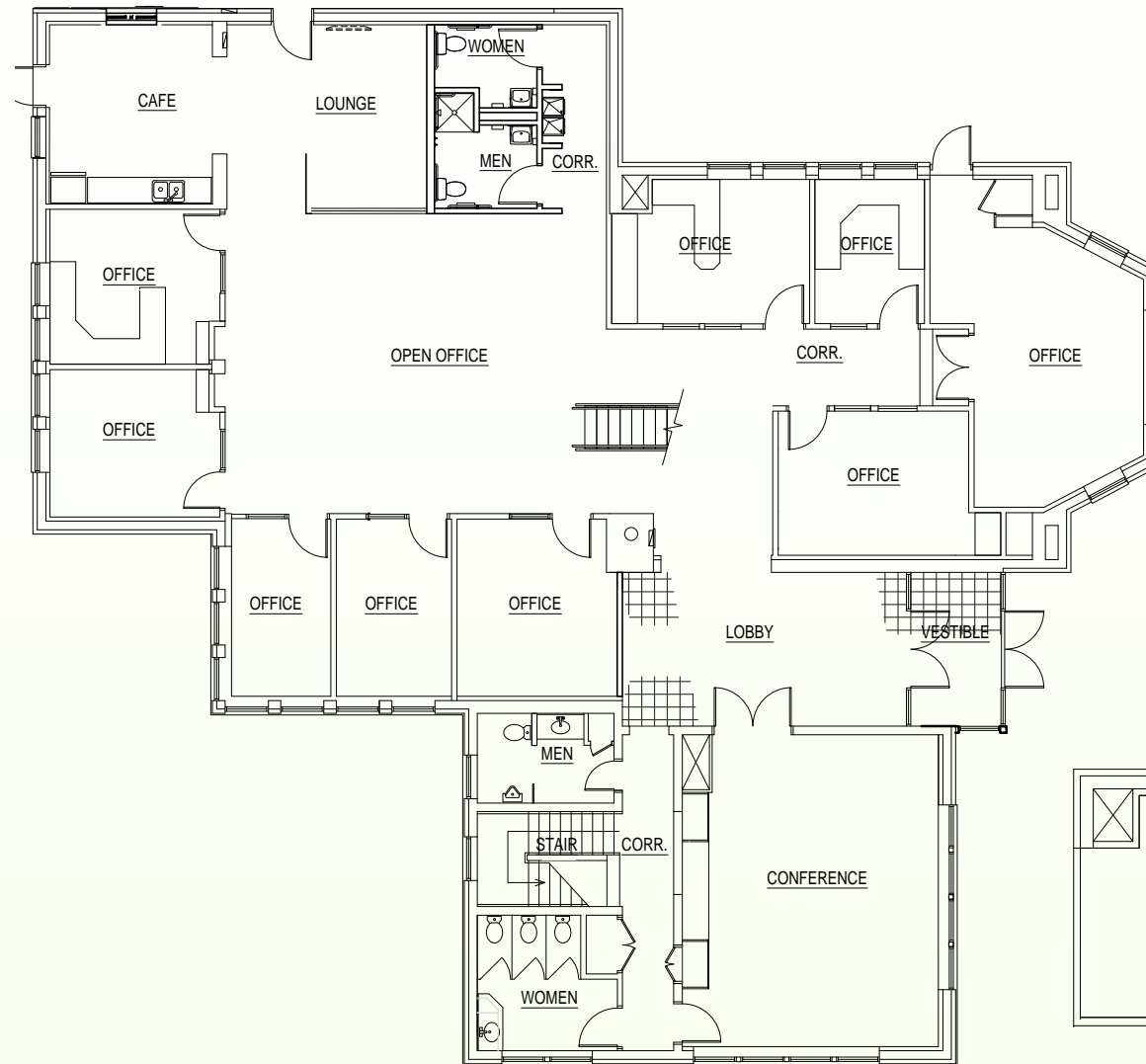
### LEASE RATE

\$27.50 PSF Full Service

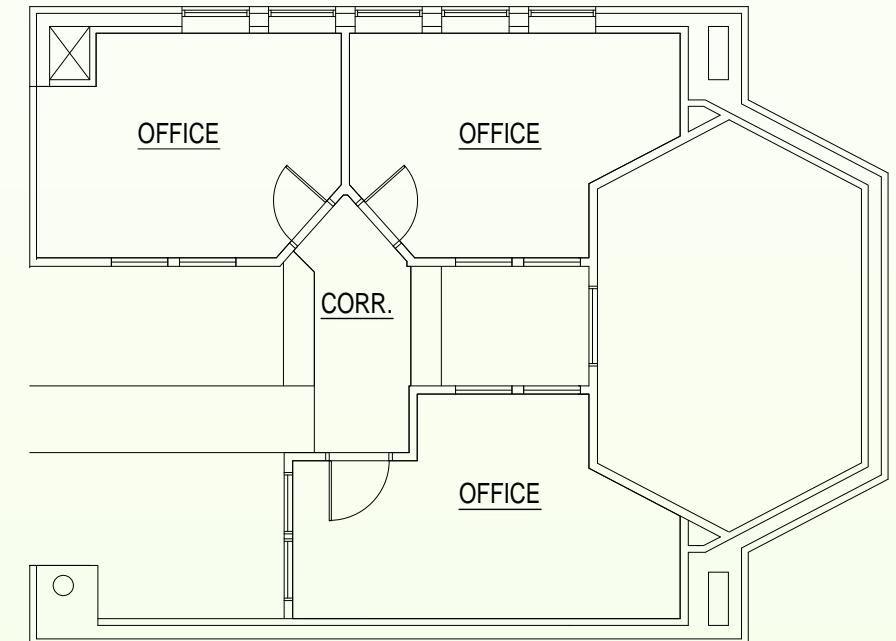
### DETAILS

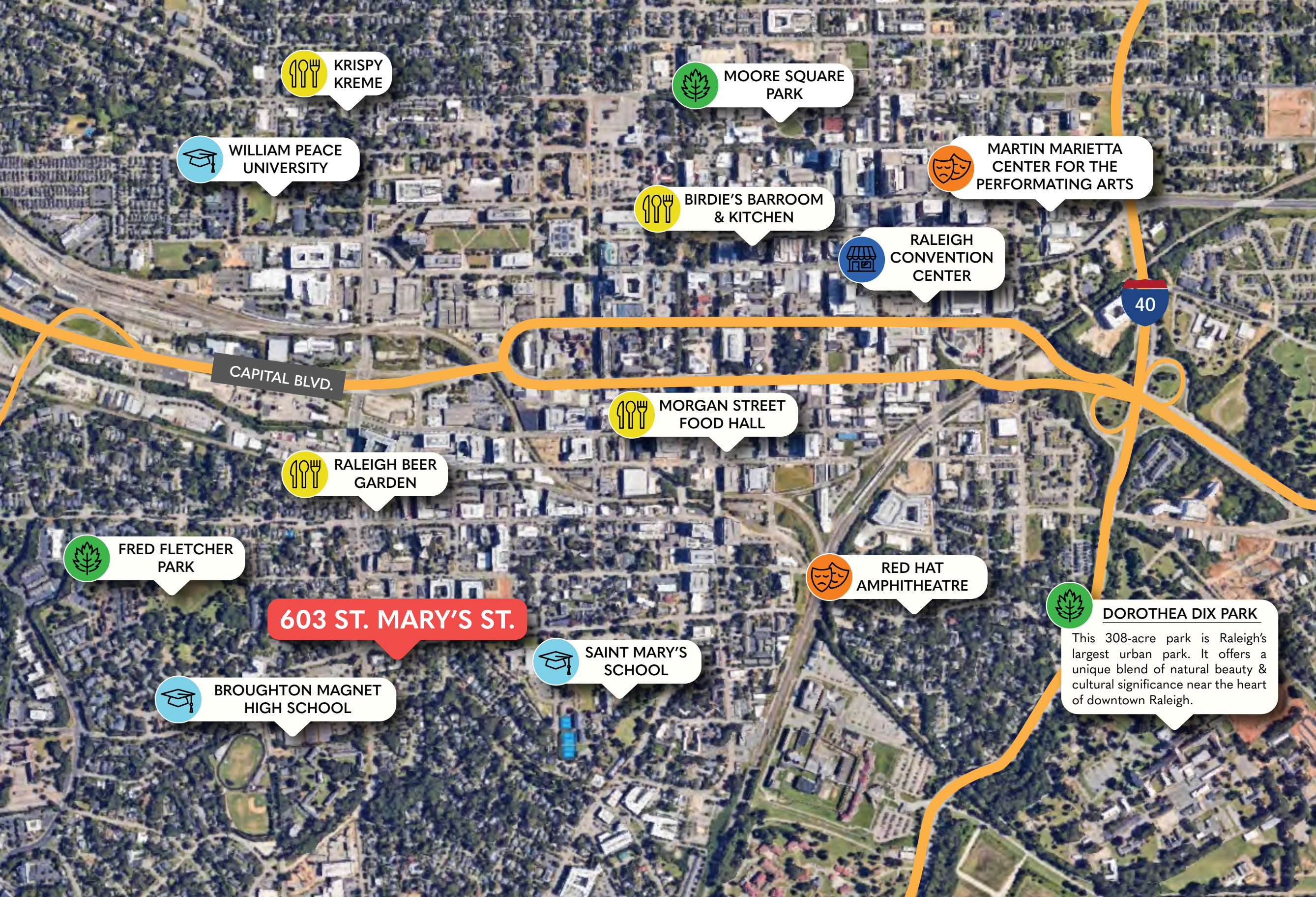
- Located near Glenwood South and the Village District (formerly Cameron Village)
- Within walking distance to shops and restaurants
- Two-story brick building
- On site, convenient parking
- Includes private offices, open work areas, conference rooms, and large break area

### MAIN LEVEL



### UPPER LEVEL





## AMENITIES

### RESTAURANTS

Birdies Barroom & Kitchen • Brewery Bhavana • The Cardinal Bar • First Watch Heirloom • Krispy Kreme • Madre • Mellow Mushroom • Midwood Smokehouse Morgan Street Food Hall • Mulino Kitchen & Bar My Way Tavern • The Pit Authentic BBQ • Starbucks • Sullivan's Steakhouse

### ENTERTAINMENT

CAM Raleigh • Halifax Community Center • Martin Marietta Center for the Performing Arts • NC Museum of Natural Sciences • Raleigh Convention Center • Red Hat Amphitheater

### PARKS & REC.

Dorthea Dix Park • Fred Fletcher Park • Moore Square Park • Nash Square Park

### EDUCATION

Broughton Magnet High School • Saint Mary's School • William Peace University

### GOVERNMENT

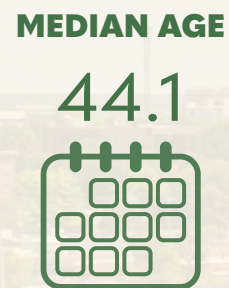
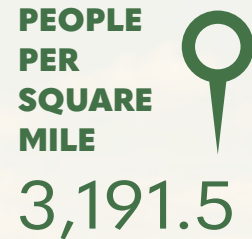
NC Executive Mansion • NC State Capitol • NC Vital Records • Wake County Justice Center

**DOROTHEA DIX PARK**  
 This 308-acre park is Raleigh's largest urban park. It offers a unique blend of natural beauty & cultural significance near the heart of downtown Raleigh.

**603 ST. MARY'S ST.**

# RALEIGH, NC

## CITY PROFILE



## ACCOLADES

- #1** Best-Performing Large Metro Area  
*2025 Milken Institute*
- #3** Fastest-Growing U.S. City for Construction  
*2025 CoreLogic*
- #3** Best State Capital to Live In  
*2025 WalletHub*
- #4** Best Cities for Headquarters  
*2025 Triangle Business Journal*
- #1** Best Performing City for Economic Growth  
*2025 Milken Institute*
- #9** Best Large Cities to Start a Business  
*2025 WalletHub*

## 601 ST. MARY'S STREET DEMOGRAPHICS (NOV 2025)

### Population



1 Mile	3 Miles	5 Miles
20,225	108,324	242,689

### Average Household Income



1 Mile	3 Miles	5 Miles
\$152,057	\$148,366	\$131,996

### Employees



1 Mile	3 Miles	5 Miles
32,147	84,587	180,730

# 601 SAINT MARYS STREET

RALEIGH, NC

## LEASING

Peter Pace, SIOR

919.645.2770 • peterpace@yorkproperties.com

## MARKETING

Victoria Eaton

victoriaeaton@yorkproperties.com

## YORK PROPERTIES

Brokerage · Property Management · Security  
Maintenance · Association Management · Construction  
Landscaping · Accounting

## ADDRESS

2108 Clark Avenue  
Raleigh, NC 27605

## ONLINE

@yorkproperties1  
www.yorkproperties.com

**york**