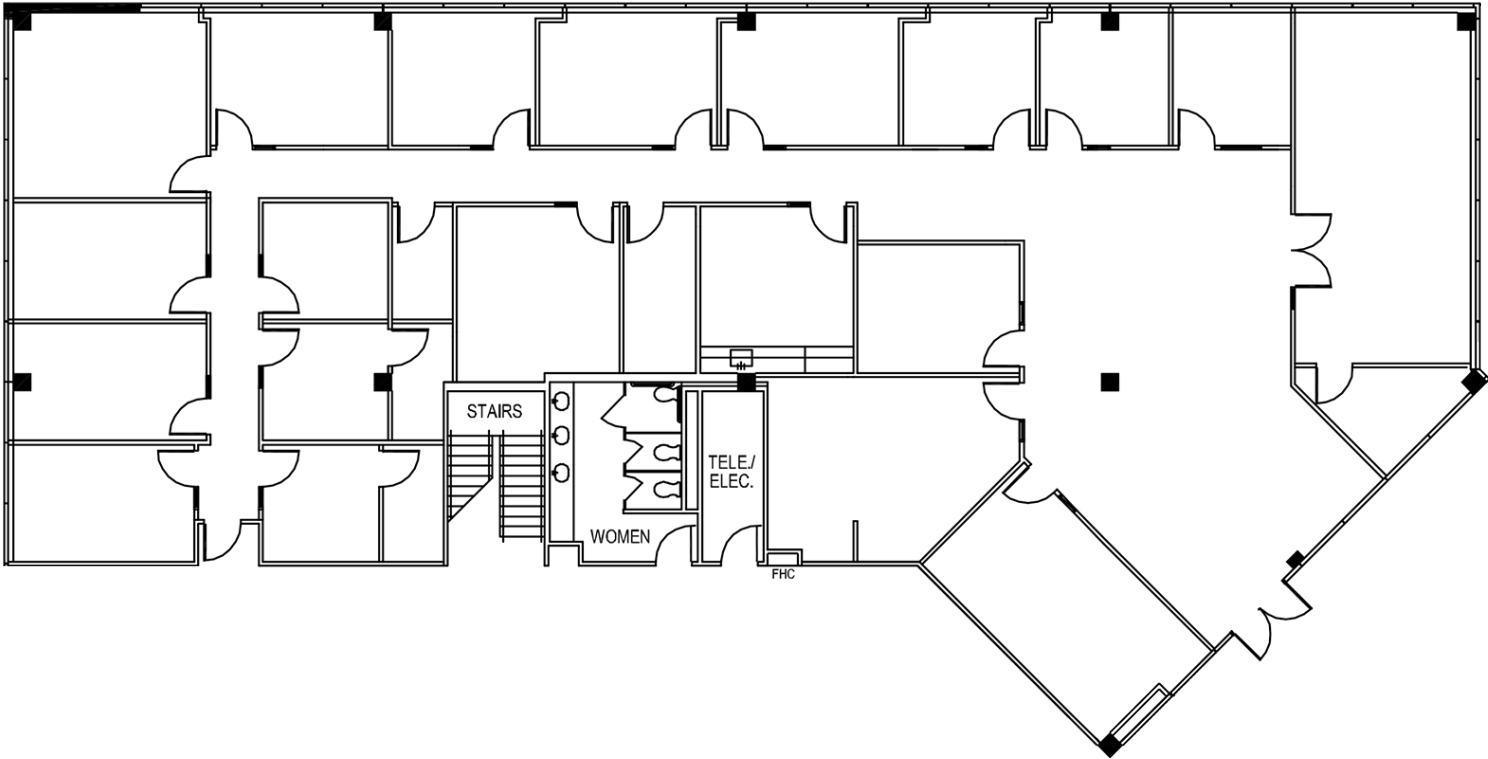


FOR LEASE | OFFICE | 2424 WILCREST DRIVE



○ SUITE 120  
6,232 Square Feet

MATT EASTERLING  
713.325.4112  
measterling@landparkco.com

2550 Gray Falls Drive, Suite 400 | Houston, TX 77077  
713-789-2200 | LandParkCo.com

The information contained herein is believed to be correct. However, no warranty or representation is made. All prices are subject to change without notice and property is subject to prior lease, sale or withdrawal from the market without notice.