

# PARTIAL 26TH FLOOR

20,026 RSF

AVAILABLE SEPTEMBER 2027

250  
VESEY

**Term through** 5/31/2030

**3** Conference

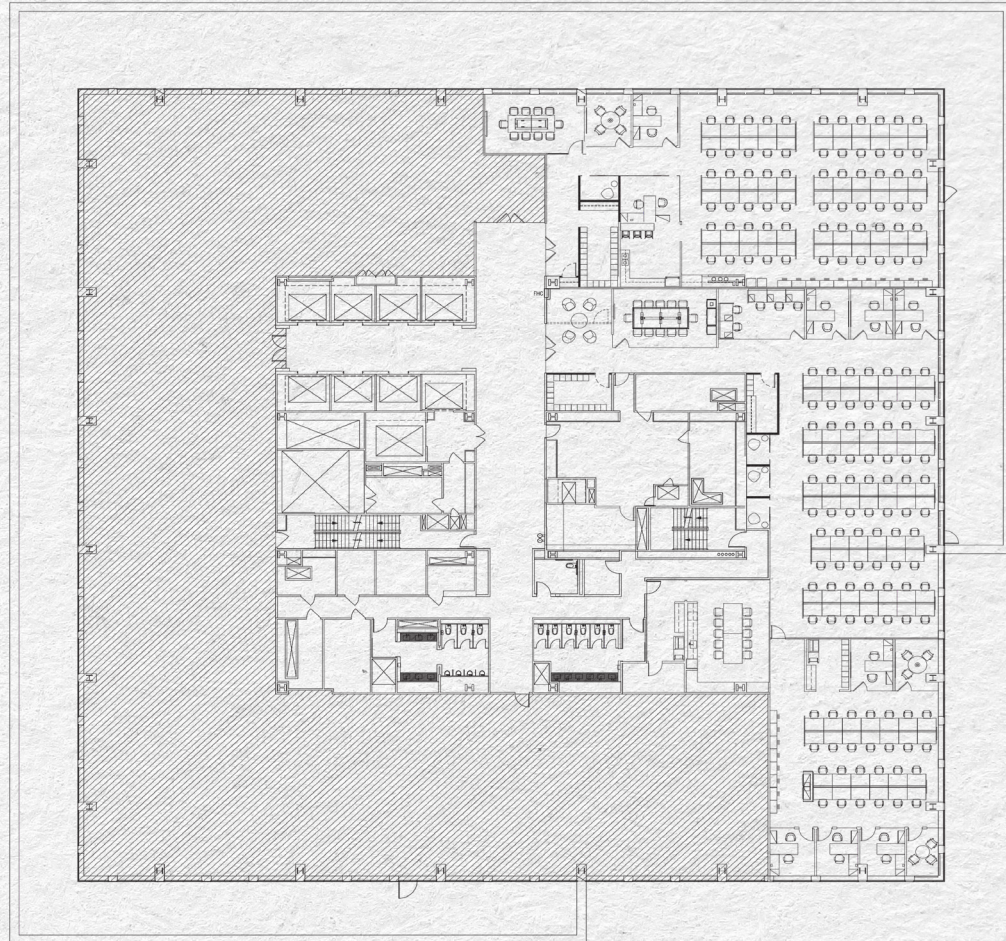
**3** Meeting

**8** Offices

**165** Workstations

**Pantry**

[View The Virtual Tour](#)



Contact us today to tour this opportunity

**DALE SCHLATHER**

+1 212 841 5970

dale.schlather@cushwake.com

**RON LO RUSSO**

+1 212 841 7979

ron.lorusso@cushwake.com

**GREG HERMAN**

+1 212 841 7828

greg.herman@cushwake.com

**PIERCE HANCE**

+1 212 841 7641

pierce.hance@cushwake.com

 **CUSHMAN &  
WAKEFIELD**