



10850 Emmet Street | Omaha, NE 68164

\$7.50 PSF NNN

Property Features

- Located directly off I-680 & West Maple Road
- Features a mix of private offices, conference rooms, and open space
- Abundant natural light
- Ample parking

13321 California Street, Suite 105
Omaha, NE 68154
402 255 6060
nainpdodge.com

Mary Purcell
Associate
402 255 6086
mary.purcell@npdodge.com



ADDRESS	SIZE (SF)	LEASE RATE	LEASE TYPE
10850 Emmet Street	20,710 SF	\$7.50 SF/yr	NNN, \$3.75 PSF

BUILDING DETAILS

Ceiling Height	13'-15'9"
Year Built	1999
Sprinklered	Yes
Roof	Flat
HVAC	15 Roof Units
Foundation	Masonry
ADA Access	Yes
Zoning	CC
Lot Size	4.58 AC
Parking	124 Surface

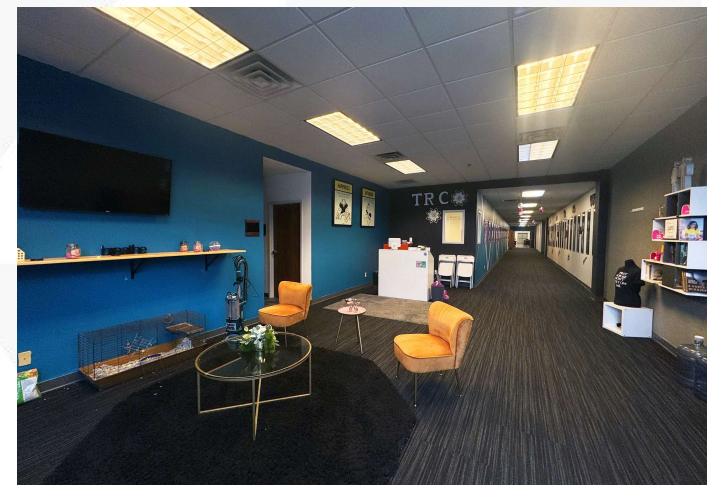
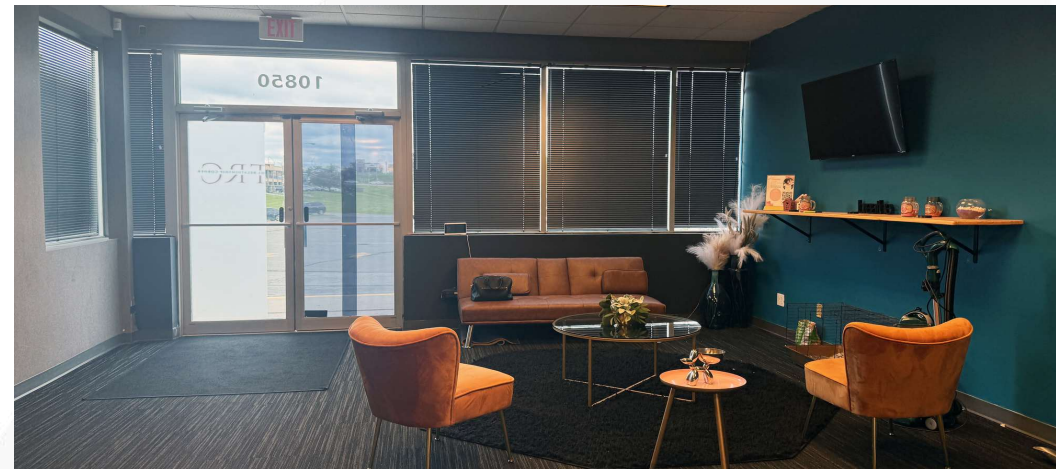
LOCATION DETAILS

Market	Omaha / Council Bluffs
Submarket	Northwest
County	Douglas
Cross Streets	108th & W Maple Road

DEMOGRAPHICS 1 MILE 3 MILES 5 MILES

Total Households	5,985	40,381	94,468
Total Population	12,779	92,135	230,489
Average HH Income	\$64,695	\$85,850	\$90,008

10850 Emmet Street | Omaha, NE 68164





10850 Emmet Street | Omaha, NE 68164



Map data ©2025 Imagery ©2025 Airbus, Maxar Technologies, USDA/FPAC/Geo