

880 Johnnie Dodds Blvd

2,400 SF Office Space For Lease

Mount Pleasant
South Carolina 29464

2nd Story Office Space with Great Visibility in Mount Pleasant



Contact Us

Charlie Carmody
Senior Vice President
+1 843 577 1155
charles.carmody@cbre.com

Ryan Carmody
Vice President
+1 843 577 1162
ryan.carmody@cbre.com



Property Highlights

2-Story brick building with great visibility from Mt Pleasant's busy Highway 17/ Johnnie Dodds Blvd. Easy access to I-526 and Downtown Charleston.

- + Beautiful second floor space with lots of windows and open work space
- + New LED lighting
- + Separate HVAC units
- + Category 6 wiring in place
- + Suite 2 includes kitchen break room, conference room, 2 restrooms, 6 private offices
- + Can be leased fully furnished or vacant
- + Nearby shopping, restaurants
- + Plenty of parking
- + Suite 2: 2,400 SF space on second floor
- + Lease rate: \$28.00 PSF; Tenant will pay share of electricity and water/sewer; Tenant responsible for interior janitorial

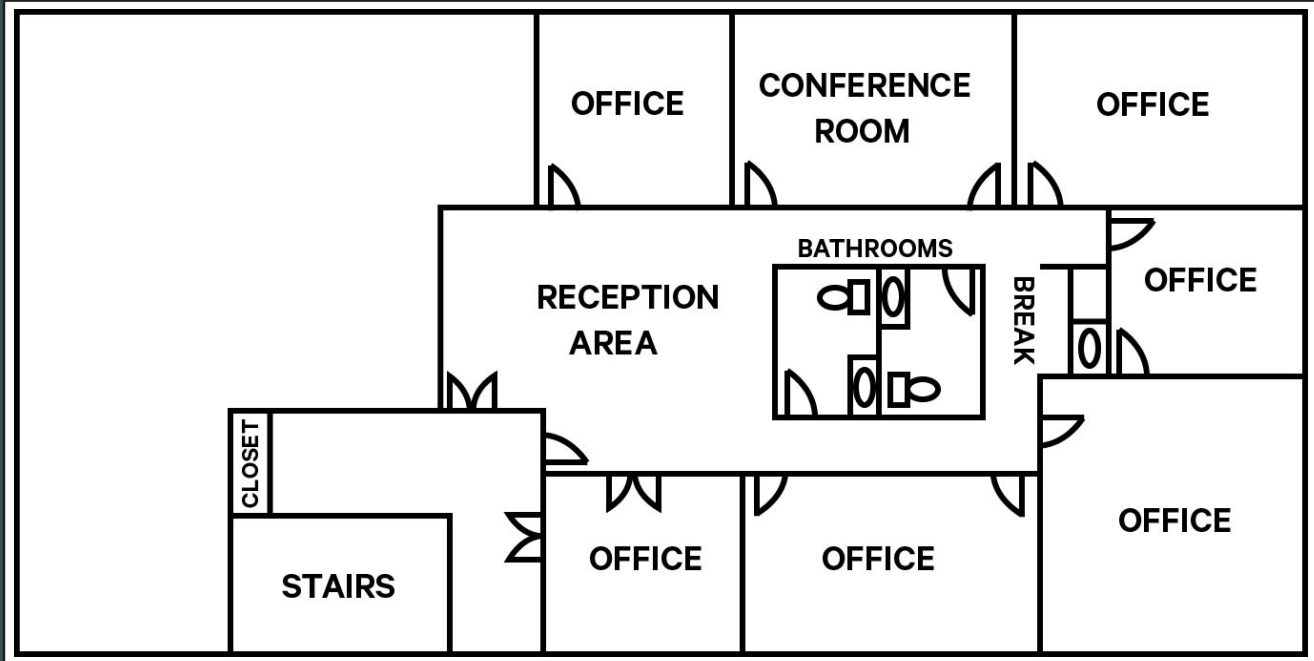
2,400

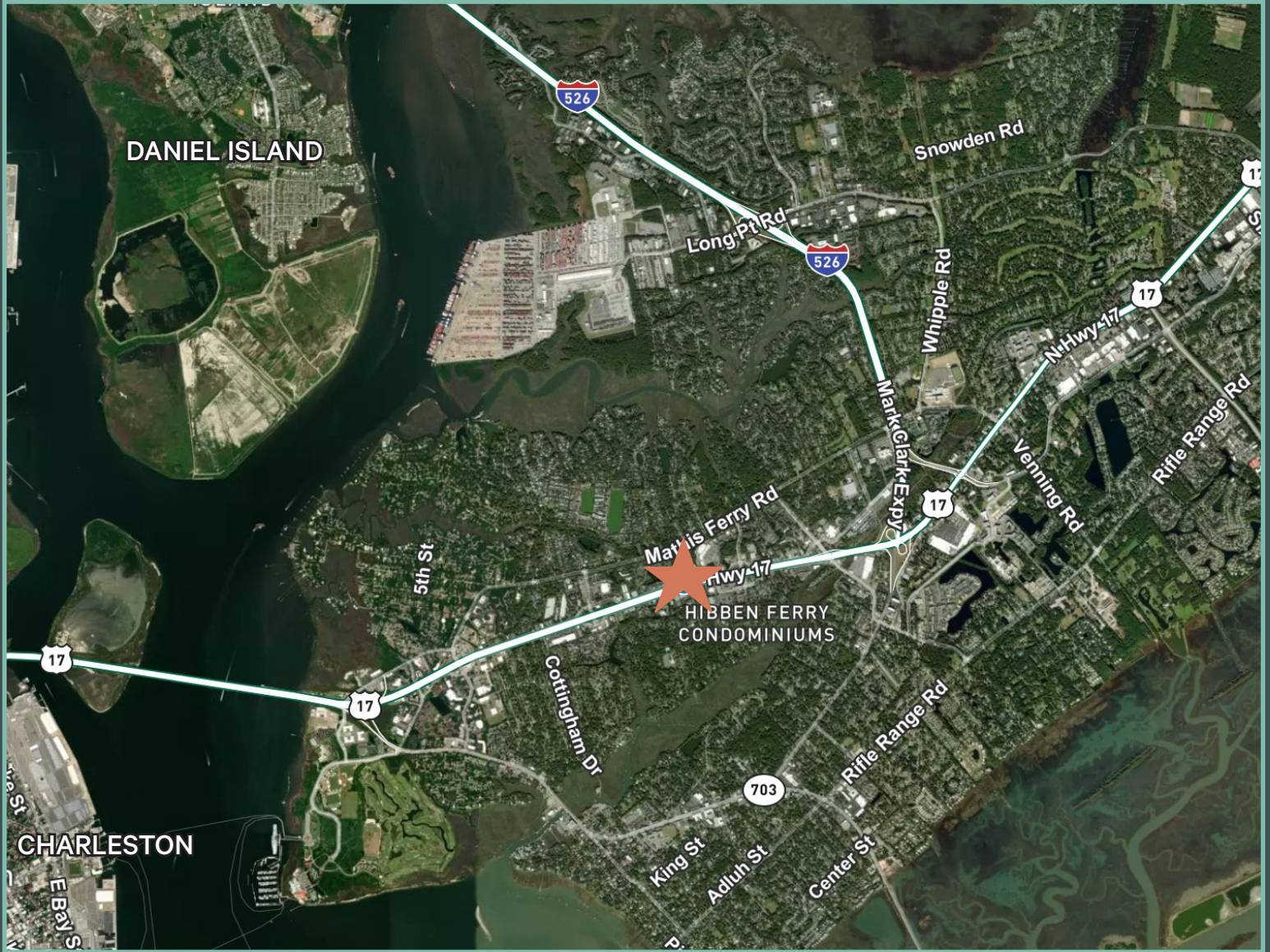
Square Feet

\$28.00

Per Square Foot

Suite 2: 2,400 SF





Contact Us

Charlie Carmody

Senior Vice President

+1 843 577 1155

charles.carmody@cbre.com

Ryan Carmody

Vice President

+1 843 577 1162

ryan.carmody@cbre.com

© 2026 CBRE, Inc. All rights reserved. This information has been obtained from sources believed reliable, but has not been verified for accuracy or completeness. You should conduct a careful, independent investigation of the property and verify all information. Any reliance on this information is solely at your own risk. CBRE and the CBRE logo are service marks of CBRE, Inc. All other marks displayed on this document are the property of their respective owners, and the use of such logos does not imply any affiliation with or endorsement of CBRE. Photos herein are the property of their respective owners. Use of these images without the express written consent of the owner is prohibited.