

ROSE GARDEN BUSINESS PARK



Rose Garden
BUSINESS PARK



OFFICE & INDUSTRIAL FOR LEASE

1801 – 1831 W. ROSE GARDEN LANE | 20801 – 20823 N 19TH AVENUE | PHOENIX, AZ 85027

FOR MORE INFO, PLEASE CONTACT:



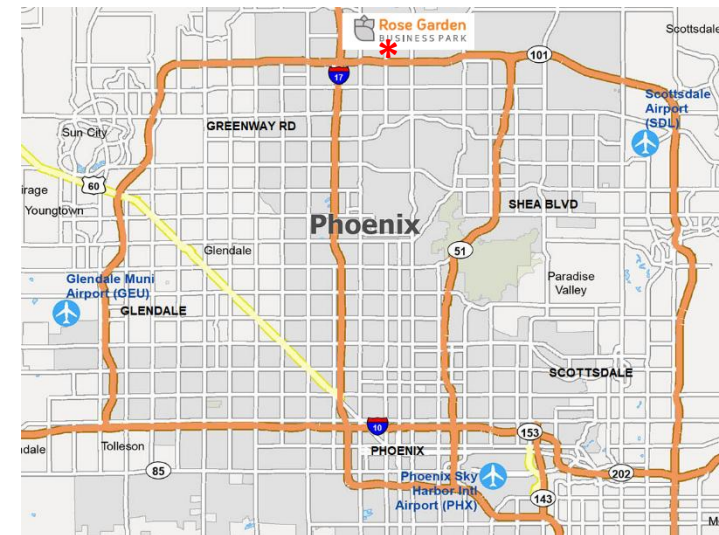
Jim Lieberthal, SIOR
o. 602.386.1229
c. 480.529.6400
jjml@cutlercommercial.com

Eric Ferber, CCIM
o. 602.386.1234
c. 602.332.2821
eferber@cutlercommercial.com

Cutler Commercial
2150 East Highland Avenue,
Ste. 207, Phoenix, AZ 85016
www.cutlercommercial.com

PROPERTY FEATURES

- Nine Buildings Totaling ±157,101 SF(Office/Industrial)
- ±18' Clear Height and ±10' x 10' Grade Level Loading
- 2.6:1,000 Parking Ratio
- Excellent Visibility along 19th Ave. & Rose Garden Lane
- Close to Loop 101 and I-17 Freeways
- Recent Improvements: Roof, Landscaping, Parking Lot & Signage
- Responsive & Tenant Friendly Ownership



The information contained herein is believed to be accurate but is not warranted as to its accuracy and may change or be updated without notice. Seller or landlord makes no representation as to the environmental condition of the property and recommends purchaser's or tenant's independent investigation.

SITE PLAN & AVAILABILITY



FOR MORE INFORMATION:

Jim Lieberthal, SIOR
 o. 602.386.1229
 c. 480.529.6400
jjml@cutlercommercial.com

Eric Ferber, CCIM
 o. 602.386.1234
 c. 602.332.2821
eferber@cutlercommercial.com

INDUSTRIAL SPACE | \$1.50 SF/MO (± \$0.34 SF NNN's)

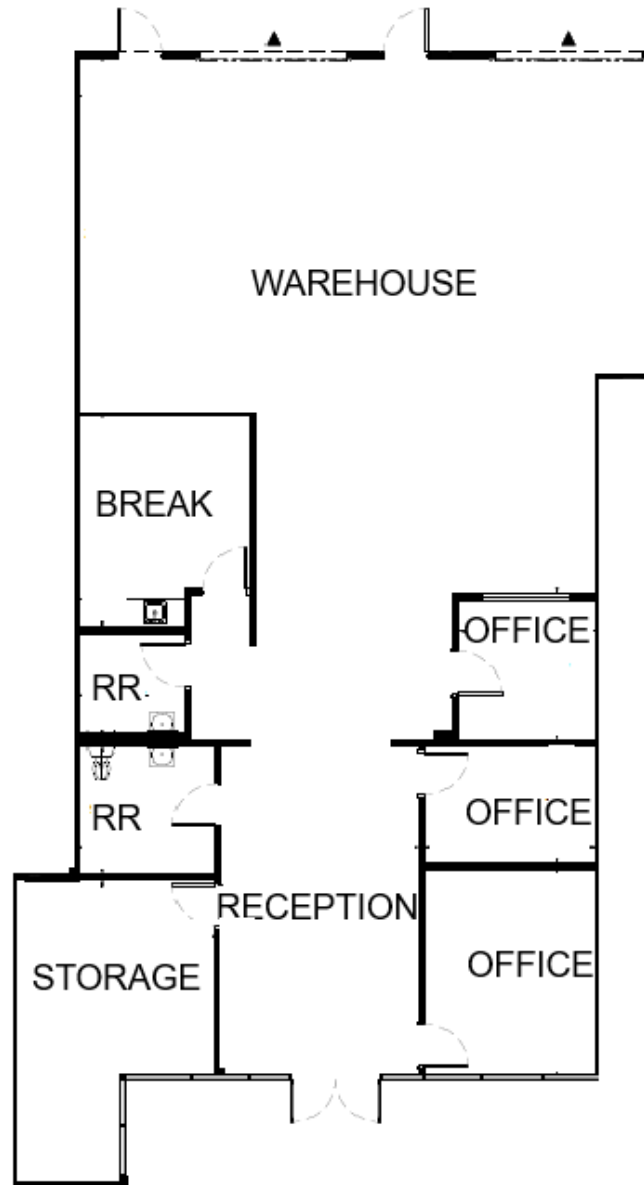
BUILDING	STE	±SF	NOTES
20801 N. 19 TH AVE	10	3,037	RECEPTION, 2 OFFICES, STORAGE, BREAK AREA, A/C WAREHOUSE, DOCK HIGH LOADING
1801 W. ROSE GARDEN LANE	1-2	4,245	RECEPTION, 2 OFFICES, BREAK AREA, EVAP WAREHOUSE
20805 N. 19 TH AVE	4*	3,827	2 OFFICES, BREAK AREA, STORAGE, 2 RESTROOMS, DOCK HIGH LOADING, EVAP WAREHOUSE
20805 N 19 TH AVE	1*	5,673	RECEPTION, 4 OFFICES, BREAK AREA, STORAGE, RESTROOM, DOCK HIGH LOADING, EVAP WAREHOUSE

* Suites 4 & 1 Contiguous to ±9,500 SF

ROSE GARDEN BUSINESS PARK

1801 – 1831 W. ROSE GARDEN LANE
 20801 – 20823 N. 19TH AVENUE
 PHOENIX, AZ 85027





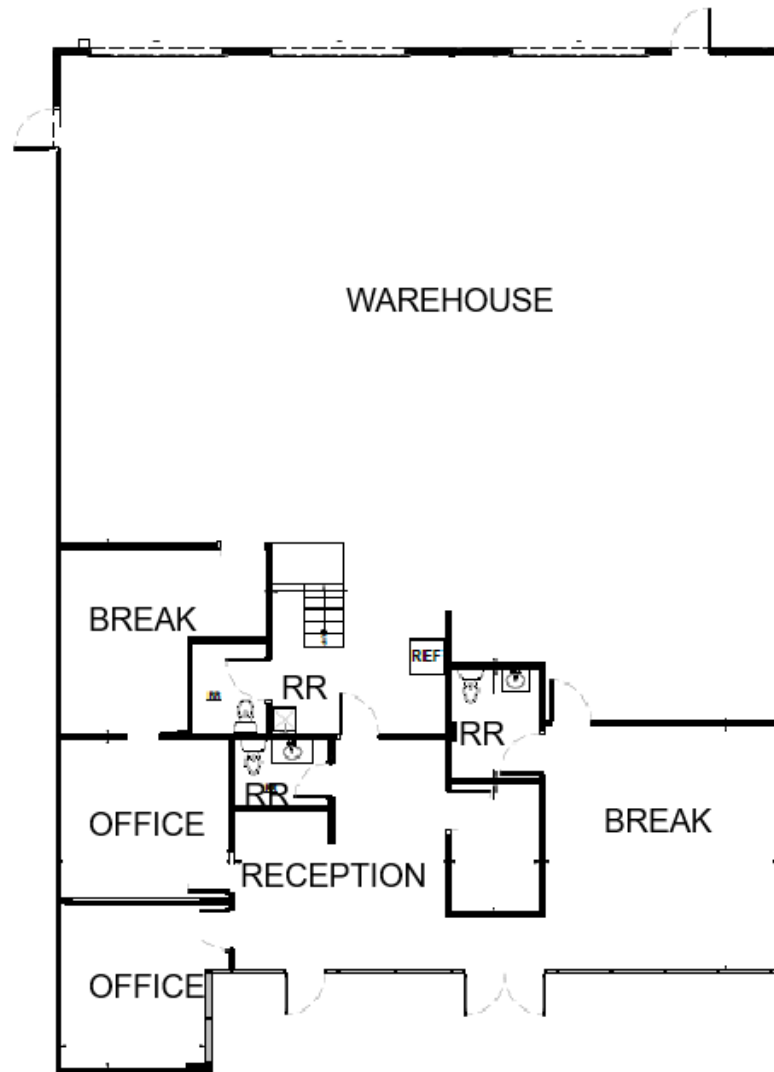
FOR MORE INFORMATION:

Jim Lieberthal, SIOR
o. 602.386.1229
c. 480.529.6400
jiml@cutlercommercial.com

Eric Ferber, CCIM
o. 602.386.1234
c. 602.332.2821
eferber@cutlercommercial.com

ROSE GARDEN BUSINESS PARK

1801 – 1831 W. ROSE GARDEN LANE
20801 – 20823 N. 19TH AVENUE
PHOENIX, AZ 85027



FOR MORE INFORMATION:

Jim Lieberthal, SIOR
o. 602.386.1229
c. 480.529.6400
jiml@cutlercommercial.com

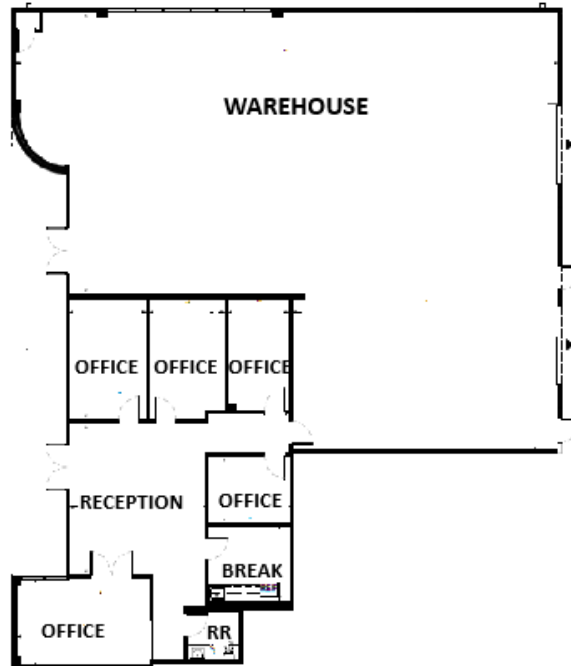
Eric Ferber, CCIM
o. 602.386.1234
c. 602.332.2821
eferber@cutlercommercial.com

ROSE GARDEN BUSINESS PARK

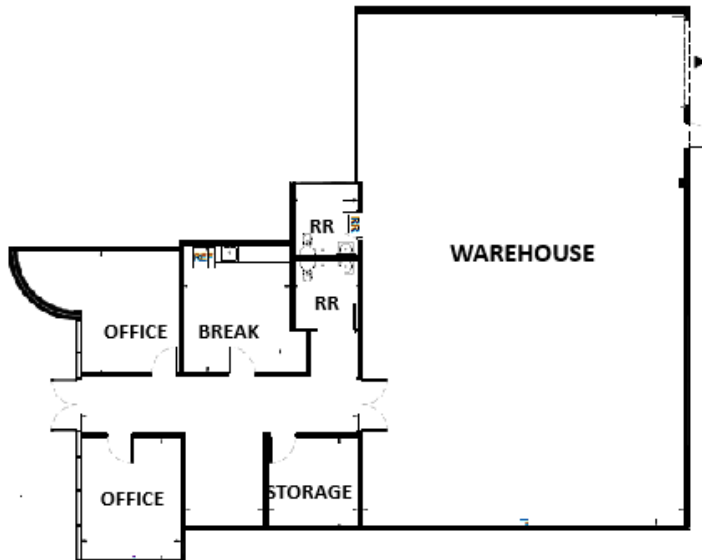
1801 – 1831 W. ROSE GARDEN LANE
20801 – 20823 N. 19TH AVENUE
PHOENIX, AZ 85027

20805 N. 19TH AVE | BUILDING 9 | SUITE 1 (±5,673 SF) | SUITE 4 (±3,827 SF) | CONTIGUOUS TO ±9,500 SF

SUITE 1



SUITE 4



FOR MORE INFORMATION:

Jim Lieberthal, SIOR

o. 602.386.1229

c. 480.529.6400

jiml@cutlercommercial.com

Eric Ferber, CCIM

o. 602.386.1234

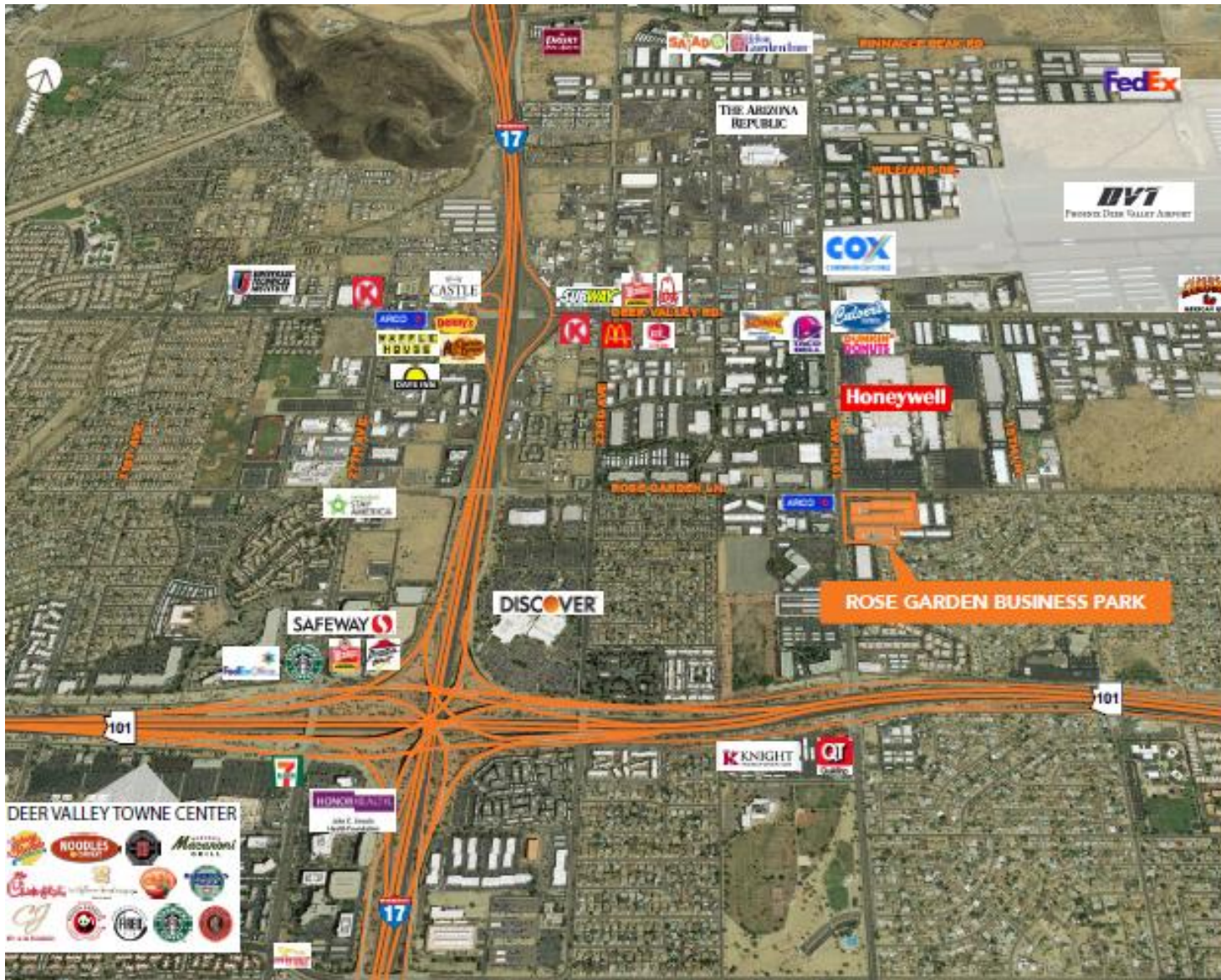
c. 602.332.2821

eferber@cutlercommercial.com

ROSE GARDEN BUSINESS PARK

1801 – 1831 W. ROSE GARDEN LANE
20801 – 20823 N. 19TH AVENUE
PHOENIX, AZ 85027

AMENITIES | RETAILER MAP



FOR MORE INFORMATION:

Jim Lieberthal, SIOR

o. 602.386.1229

c. 480.529.6400

jiml@cutlercommercial.com

Eric Ferber, CCIM

o. 602.386.1234

c. 602.332.2821

eferber@cutlercommercial.com

ROSE GARDEN BUSINESS PARK

1801 – 1831 W. ROSE GARDEN LANE
20801 – 20823 N. 19TH AVENUE
PHOENIX, AZ 85027





FOR MORE INFORMATION:

Jim Lieberthal, SIOR
o. 602.386.1229
c. 480.529.6400
jiml@cutlercommercial.com

Eric Ferber, CCIM
o. 602.386.1234
c. 602.332.2821
eferber@cutlercommercial.com

ROSE GARDEN BUSINESS PARK

1801 – 1831 W. ROSE GARDEN LANE
20801 – 20823 N. 19TH AVENUE
PHOENIX, AZ 85027