

FOR SALE

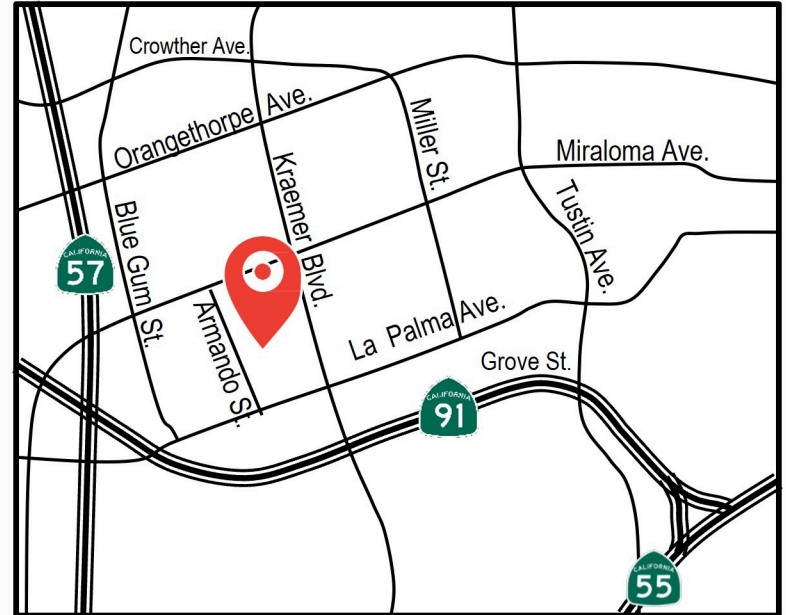
± 9,545 SQUARE FEET WITH LARGE FENCED AND GATED YARD



1144 N. ARMANDO STREET, ANAHEIM, CA 92806

PROPERTY HIGHLIGHTS

- ± 2,613 Sq. Ft. of High End Office Space
- ± 2,600 Sq. Ft. of Bonus Upstairs Office (Not included in Square Footage)
- Large Fenced Yard Area
- 400 amps. 120/208. 3 phase, 4 wire
- One (1) Ground Level Loading Door
- One (1) Truckwell
- 18' Clearance in Warehouse
- New LED Lighting in Warehouse
- Good Truck Access
- Excellent Freeway Access



THOMAS MULROONEY
SENIOR VICE PRESIDENT
(714) 612-4315
MULDOG@ASHWILLASSOCIATES.COM
CADRE LIC.00892668

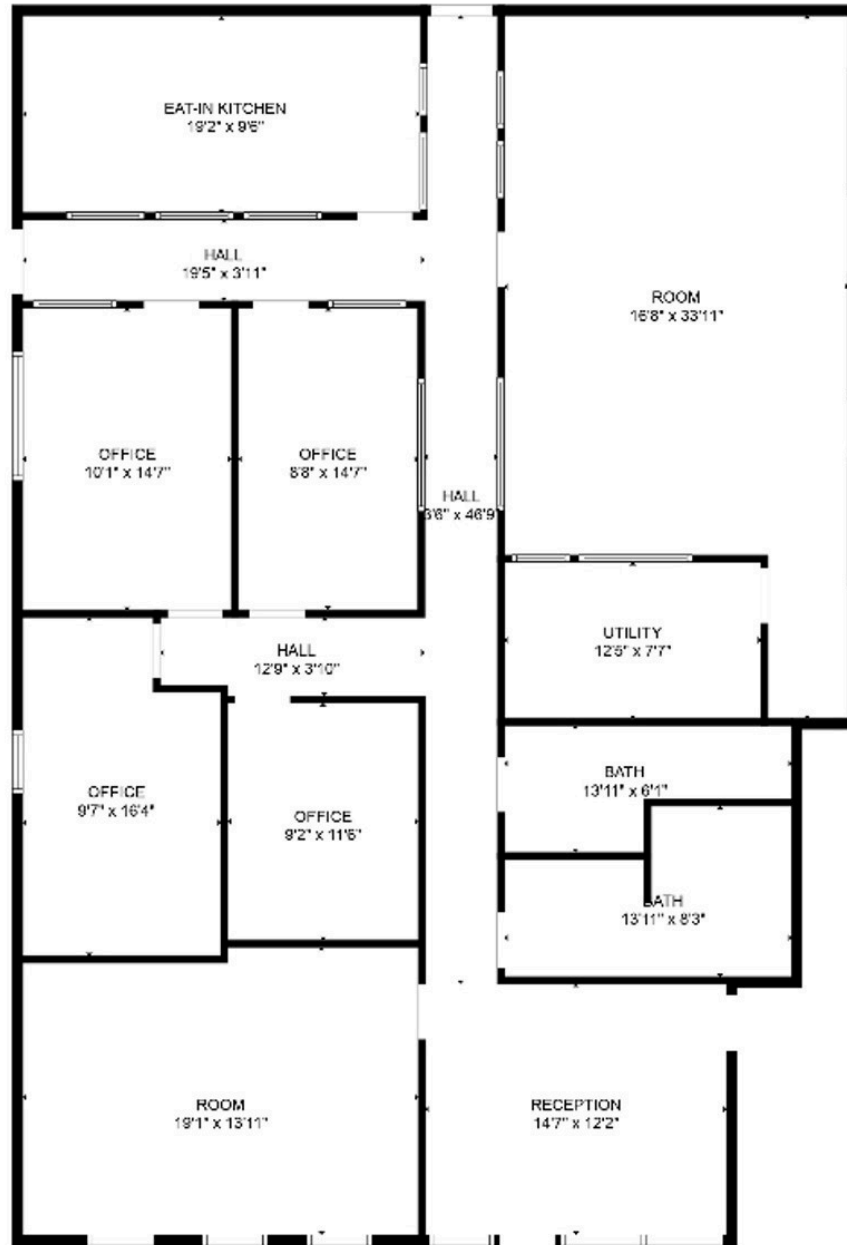
Disclaimer: This Information contained herein is believed reliable but not guaranteed. Photos may be digitally altered or artistic renderings. All trademarks and images are the property of their respective owners. Buyers and Tenants should verify information independently.



CORP. DRE LIC.01291393

FOR SALE

**± 9,545 SQUARE FEET
WITH LARGE FENCED AND GATED YARD**



THOMAS MULROONEY

SENIOR VICE PRESIDENT

(714) 612-4315

MULDOG@ASHWILLASSOCIATES.COM

CADRE LIC.00892668

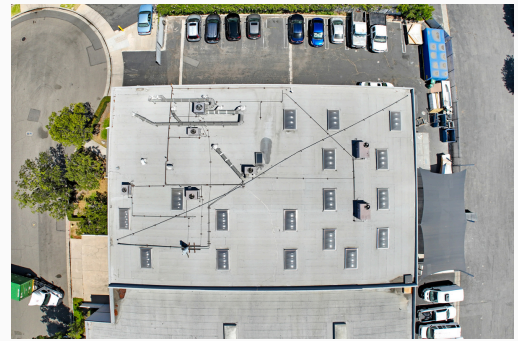
Disclaimer: This Information contained herein is believed reliable but not guaranteed. Photos may be digitally altered or artistic renderings. All trademarks and images are the property of their respective owners. Buyers and Tenants should verify information independently.



CORP. DRE LIC.01291393

FOR SALE

± 9,545 SQUARE FEET WITH LARGE FENCED AND GATED YARD



THOMAS MULROONEY
SENIOR VICE PRESIDENT
(714) 612-4315
MULDOG@ASHWILLASSOCIATES.COM
CADRE LIC.00892668

Disclaimer: This Information contained herein is believed reliable but not guaranteed. Photos may be digitally altered or artistic renderings. All trademarks and images are the property of their respective owners. Buyers and Tenants should verify information independently.

**Ashwill
Associates**
COMMERCIAL REAL ESTATE

CORP. DRE LIC.01291393