



OFFERING SUMMARY

LEASE RATE:	\$21.00 SF/yr (NNN)
BUILDING SIZE:	18,000 SF
AVAILABLE SF:	2,386 - 8,238 SF
OPERATING EXPENSES:	\$11.52 SF/yr
LOT SIZE:	1.62 Acres
ZONING:	PUD OFFICE
MARKET:	Des Moines
SUBMARKET:	Western Suburbs

PROPERTY OVERVIEW

This ground-floor retail suite is located within the high-end Village of Ponderosa development. The entire 8,238 SF first floor is available for lease. It is currently broken up into two separate 2,386 SF & 5,852 SF window-lined suites that let in ample natural light through its multitude of windows and overlook a beautiful water feature. The larger suite, formerly occupied by a salon & spa operator, features a front reception area, mostly open floor plan, and several private rooms with sinks. The smaller suite is an open floor plan layout with two restrooms and a private office. This location and co-tenancy in the high-scoring demographic area is ideal for retail, professional services, and medical users.

PROPERTY HIGHLIGHTS

- Attractive, Modern, Brick Facade
- Property backs up to Water Feature & Westridge Greenway Trail
- 1 Mile from Jordan Creek Mall
- Handicap Accessible
- Building and Parking Lot in Great Condition
- Strong Number of Nearby Retail Trade Businesses and new construction Luxury Residential in the direct vicinity

NORA WALSH

O: 515.259.1041

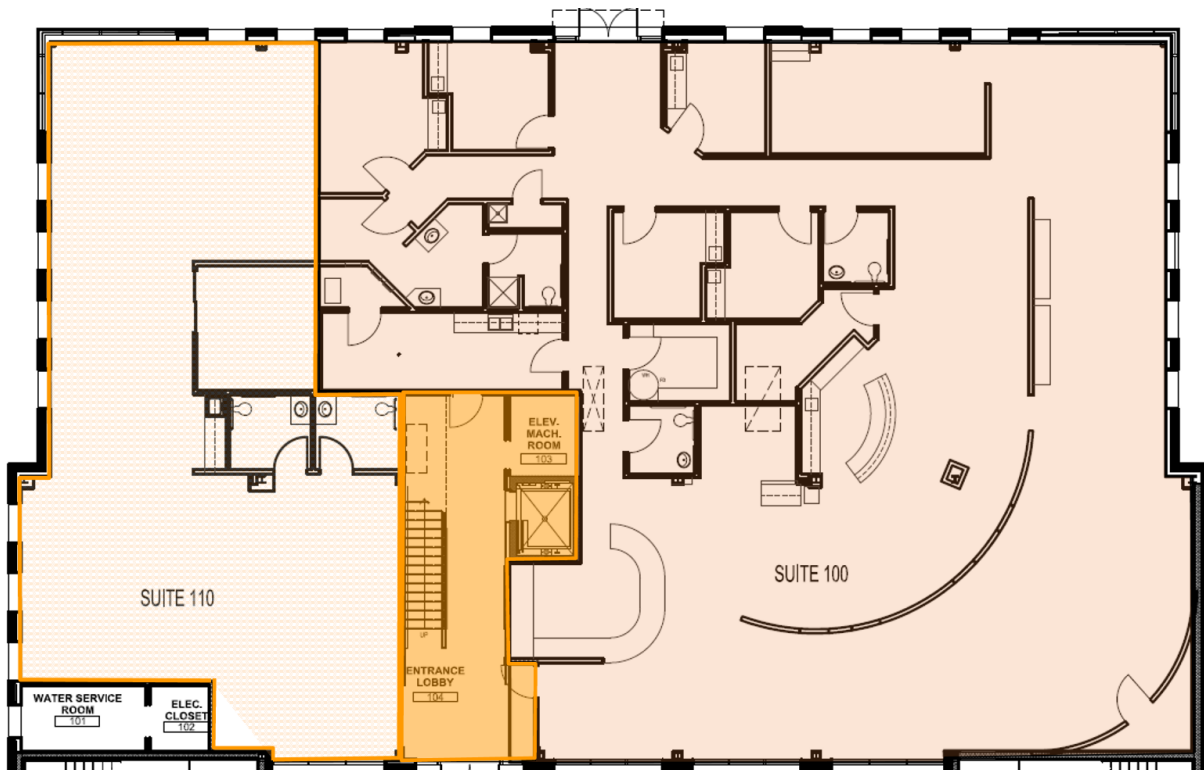
nora.walsh@svn.com

IA #S66842000

HEATH D. BULLOCK, CCIM, SIOR

O: 515.554.7412

heath.bullock@svn.com



NORA WALSH

O: 515.259.1041

nora.walsh@svn.com

IA #S66842000

HEATH D. BULLOCK, CCIM, SIOR

O: 515.554.7412

heath.bullock@svn.com



DEMOGRAPHICS	1 MILE	3 MILES	5 MILES
TOTAL POPULATION	5,577	45,197	91,878
MEDIAN AGE	33.5	34.0	35.4
TOTAL HOUSEHOLDS	2,295	18,746	37,471
AVERAGE HH INCOME	\$131,213	\$101,738	\$98,719
AVERAGE HOUSE VALUE	\$213,165	\$215,701	\$227,590

NORA WALSH
O: 515.259.1041
nora.walsh@svn.com
IA #S66842000

HEATH D. BULLOCK, CCIM, SIOR
O: 515.554.7412
heath.bullock@svn.com