

GENERAL NOTES

EXISTING GRADES TO REMAIN, NO PROPOSED GRADE CHANGES, UNLESS NOTED.
G.C. RESPONSIBLE FOR THE DISCONNECTION & RECONNECTION OF ALL UTILITIES AS REQ'D.
G.C. RESPONSIBLE FOR THE DISCONNECTION & RECONNECTION OF ALL UTILITIES AS REQ'D.
SEWER, WATER, DRAINS, ELEC., ETC., AS NOTED, OR IF BE DAMAGED DURING CONSTRUCTION.
G.C. RESPONSIBLE FOR ALL NEW RIGID METAL CONDUITS & ELEC. TO BOOTH FOR LIGHTS, TANKS, SIGNS, DISPENSERS, ETC...

ALL CONCRETE TO BE MIN. 4,000 P.S.I.
ALL KEY JOINTS SHALL BE RECESSED 1/2" WITH DISPOSABLE ZIP STRIP OR EQUAL. JOINT WILL BE FINISHED WITH TOLDED EDGE & FILLED WITH POLYURETHANE SEALANT *SEALTIGHT GARDOX* AS MFG'D BY W.R. MEADOWS. FURN. & INSTALLED BY G.C.
ALL KEY JOINTS TO BE 0.022" TO 0.025" THK. GALV. SCREEN KEY JOINTS AS MFG'D BY DAYTON SUPERIOR (G-33 SCREEN KEY JOINT OR G-34 LOAD KEY JOINT) FURN. & INSTALLED BY G.C. SEE DWG. MS-2
G.C. RESPONSIBLE FOR LOCATION OF ALL JOINTS UNLESS NOTED

G.C. TO INSTALL NEW FULL DEPTH ASPHALT PAVING AS REQ'D. (OLD TANK, PIPING, ISLAND EXCAVATIONS IF REQ'D)
2" FINISH COURSE MIN. 10 TON ROLLER
2" STABILIZING BASE COURSE KEY IN ALL EDGES
4" GRAVEL BLEND SUB BASE SEAL ALL SEAMS WITH HOT TAR
G.C. TO RESURFACE OVER ALL EXISTING UNDISTURBED ASPHALT WITH 1-1/2" ASPHALT FINISH COURSE. RESET ALL MANHOLES/GRATES AS REQUIRED.
G.C. IS RESPONSIBLE FOR PAINTING ALL CURB CUT OPENINGS *WHITE* TYPICALLY A 3"x3" TRIANGLE SHAPED PATTERN AT EA. SIDE OF DRIVEWAY OPENING.

CANDOPY PAINTING REQUIREMENTS BY G.C.
G.C. TO POWER WASH & LIGHTLY SAND CEILING DECK PRIOR TO APPLYING ONE COAT OF 'INSL-X' #WR-P810 WATER REDUCIBLE HIGH PERFORMANCE PRIMER.
G.C. TO COMPLETELY REMOVE ALL EXISTING PAINT FROM CANDOPY COLUMNS DOWN TO BARE METAL PRIOR TO APPLYING ONE COAT OF METAL PRIMER.
G.C. TO PAINT CEILING DECK & COLUMNS WITH 'INSL-X' #APN-1060 ARMOETHANE HIGH PERFORMANCE URETHANE TOP COAT-GLASS WHITE. TWO COMPONENT KIT.
NOTE: IF TEMP IS BETWEEN 40°-50°, USE MP 9010 UNIVERSAL WHITE PRIMER, SOLVENT BASES.
ALL PAINT NOTED ABOVE TO BE ORDERED THRU INSL-X CORP. (914) 786-5000 FAX (914) 786-5831 (PHYLLIS OR HELEN)

LIST OF EQUIPMENT FURNISHED BY MERIT INSTALLED BY G.C.

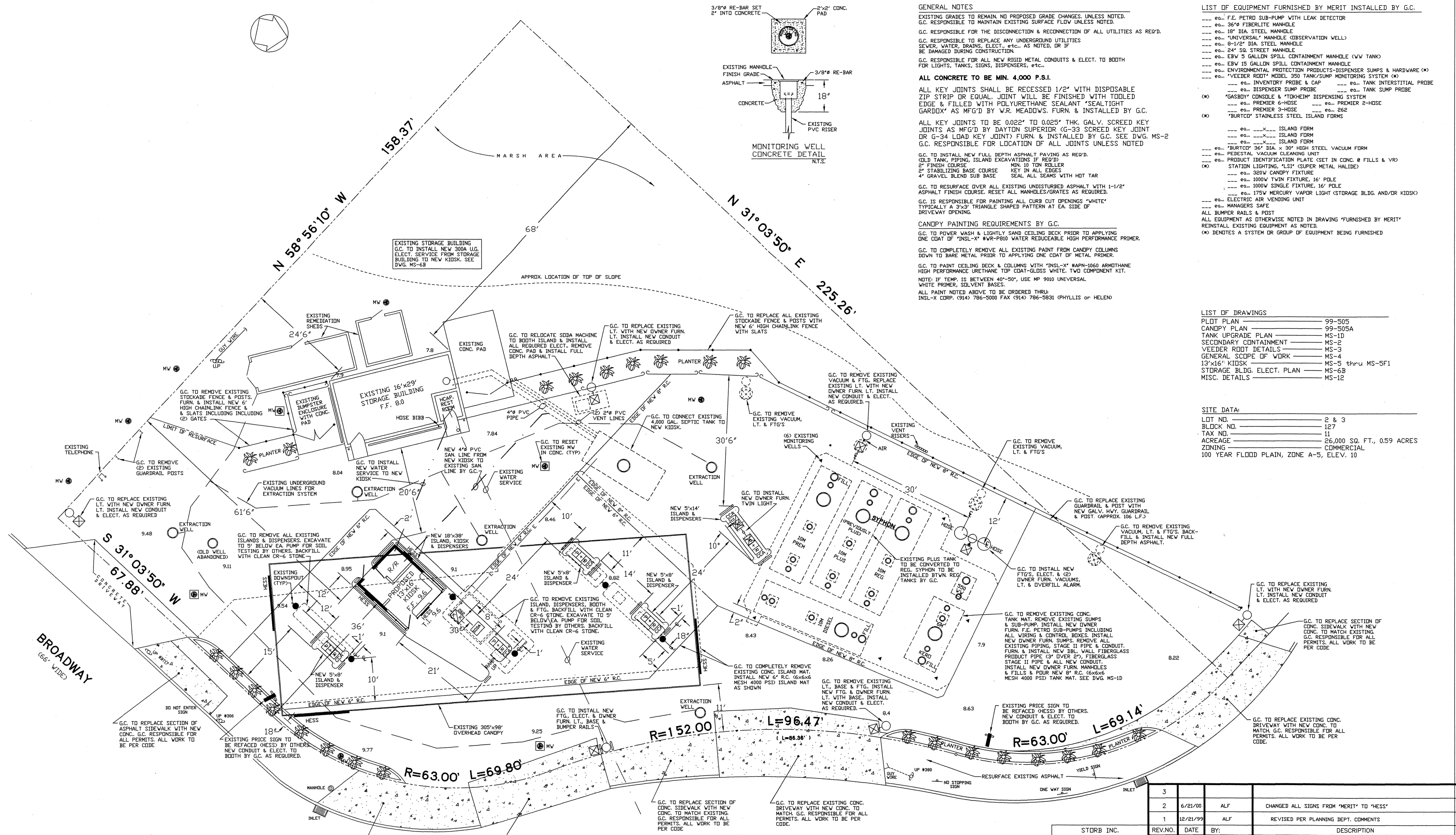
- ea. F.E. PETRO SUB-PUMP WITH LEAK DETECTOR
- ea. 36" FIBERLITE MANHOLE
- ea. 18" DIA. STEEL MANHOLE
- ea. "UNIVERSAL" MANHOLE (OBSERVATION WELL)
- ea. 8-1/2" DIA. STEEL MANHOLE
- ea. 24" SQ. STREET MANHOLE
- ea. EBV 5 GALLON SPILL CONTAINMENT MANHOLE (VW TANK)
- ea. EBV 15 GALLON SPILL CONTAINMENT MANHOLE
- ea. ENVIRONMENTAL PROTECTION PRODUCTS-DISPENSER SUMPS & HARDWARE (H)
- ea. "VEEEDER RODY" MODEL 350 TANK/SUMP MONITORING SYSTEM (H)
- ea. INVENTORY PROBE & CAP
- ea. TANK INTERSTITIAL PROBE
- ea. DISPENSER SUMP PROBE
- ea. TANK SUMP PROBE
- (H) "GASBOY" CONDENSE & "TOKHEIM" DISPENSING SYSTEM
- ea. PREMIER 6-HOSE
- ea. PREMIER 2-HOSE
- ea. PREMIER 3-HOSE
- ea. 252
- (H) "BURTCO" STAINLESS STEEL ISLAND FORMS
- ea. ISLAND FORM
- ea. ISLAND FORM
- ea. "BURTCO" 36" DIA. x 30" HIGH STEEL VACUUM FORM
- ea. PEDESTAL VACUUM CLEANING UNIT
- ea. PRODUCT IDENTIFICATION PLATE (SET IN CONC. @ FILLS & VR)
- ea. STATION LIGHTING, 15" CUPPER METAL HALIDE
- (H) 320W CANDOPY FIXTURE
- ea. 1000W TWIN FIXTURE, 16' POLE
- ea. 1000W SINGLE FIXTURE, 16' POLE
- ea. 175W MERCURY VAPOR LIGHT (STORAGE BLDG. AND/OR KIOSK)
- ea. ELECTRIC AIR VENDING UNIT
- ea. MANAGERS SAFE
- ALL BUMPER RAILS & PDST
- ALL EQUIPMENT AS OTHERWISE NOTED IN DRAWING *FURNISHED BY MERIT*
- REINSTALL EXISTING EQUIPMENT AS NOTED.
- (H) DENOTES A SYSTEM OR GROUP OF EQUIPMENT BEING FURNISHED

LIST OF DRAWINGS

- PLOT PLAN 99-505
- CANDOPY PLAN 99-505A
- TANK UPGRADE PLAN MS-1D
- SECONDARY CONTAINMENT MS-2
- VEEEDER ROOT DETAILS MS-3
- GENERAL SCOPE OF WORK MS-4
- 13'x16" KIOSK MS-5 thru MS-5F1
- STORAGE BLDG. ELEC. PLAN MS-6B
- MISC. DETAILS MS-12

SITE DATA:

- LOT NO. 2 & 3
- BLOCK NO. 127
- TAX NO. 11
- ACREAGE 26,000 SQ. FT., 0.59 ACRES
- ZONING COMMERCIAL
- 100 YEAR FLOOD PLAIN, ZONE A-5, ELEV. 10

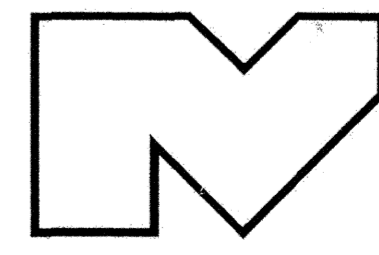


SIGNATURE BLOCK
BOARD CHAIRMAN _____ DATE _____
SECRETARY _____ DATE _____
BOROUGH ENGINEER _____ DATE _____

(N. J. S. H. TRAFFIC CIRCLE)
(A/K/A BROOKLAWN CIRCLE)
TRAFFIC FLOW

STORB INC.
CONSULTING ENGINEERS
410 N. EASTON RD.
VILLIOW GROVE, PA 19090
(215) 657-6695

3			
2	6/21/00	ALF	CHANGED ALL SIGNS FROM 'MERIT' TO 'HESS'
1	12/21/99	ALF	REVISED PER PLANNING DEPT. COMMENTS
REV.NO.	DATE	BY:	DESCRIPTION
DRAWN BY: ALF	DATE: 3/16/95		
CHECKED BY:	DATE:		
342 BROOKLAWN CIRCLE BROOKLAWN, NEW JERSEY			
PROPOSED BOOTH & DISPENSER REPLACEMENT			
PLOT PLAN			



DRAWING NUMBER:
99-505
SCALE: 1"=10'-0" (UNLESS NOTED)