

FOR LEASE

RETAIL

**8201 SE Powell Blvd
Portland, OR 97266**

- Large end suite with back room and storage/office (potentially demisable)
- Large center cashwrap / point of sale counter
- High visibility signage options
- ADA restroom
- On Trimet Bus Lines
- Less than 1 mile to I-205 and Trimet SE Powell Station

Busy intersection near Powell Street Station, by Jade District



JJ HEWITT
Commercial Broker
503-502-0379
jj@cloudcityrealty.com



PORTLAND, OR

CLOUD CITY REALTY

~3,356 SF at \$28-24 SF / YR + NNN

POWELLHURST-GILBERT





NEIGHBORING TENANTS

- 82 Powell Deli & Grocery
- Killer Banh Mi
- CaFung LLC
- Metro PCS
- Qing Qing Foot Spa
- Puddletown Organics

CLOSE BUSINESSES & INSTITUTIONS

- PCC
- APANO
- Fubon
- Winco Foods
- Los Gorditos
- Kenny's Noodle House
- Best Baguette
- Numerous fast food restaurants
- Century Theatres



JJ HEWITT
Commercial Broker
503-502-0379
jj@cloudcityrealty.com

Front showroom



Cloud City Realty
5901 NE Shaver St
Portland, OR 97213
www.cloudcityrealty.com
971-339-1456



Rear area,
storage, or office

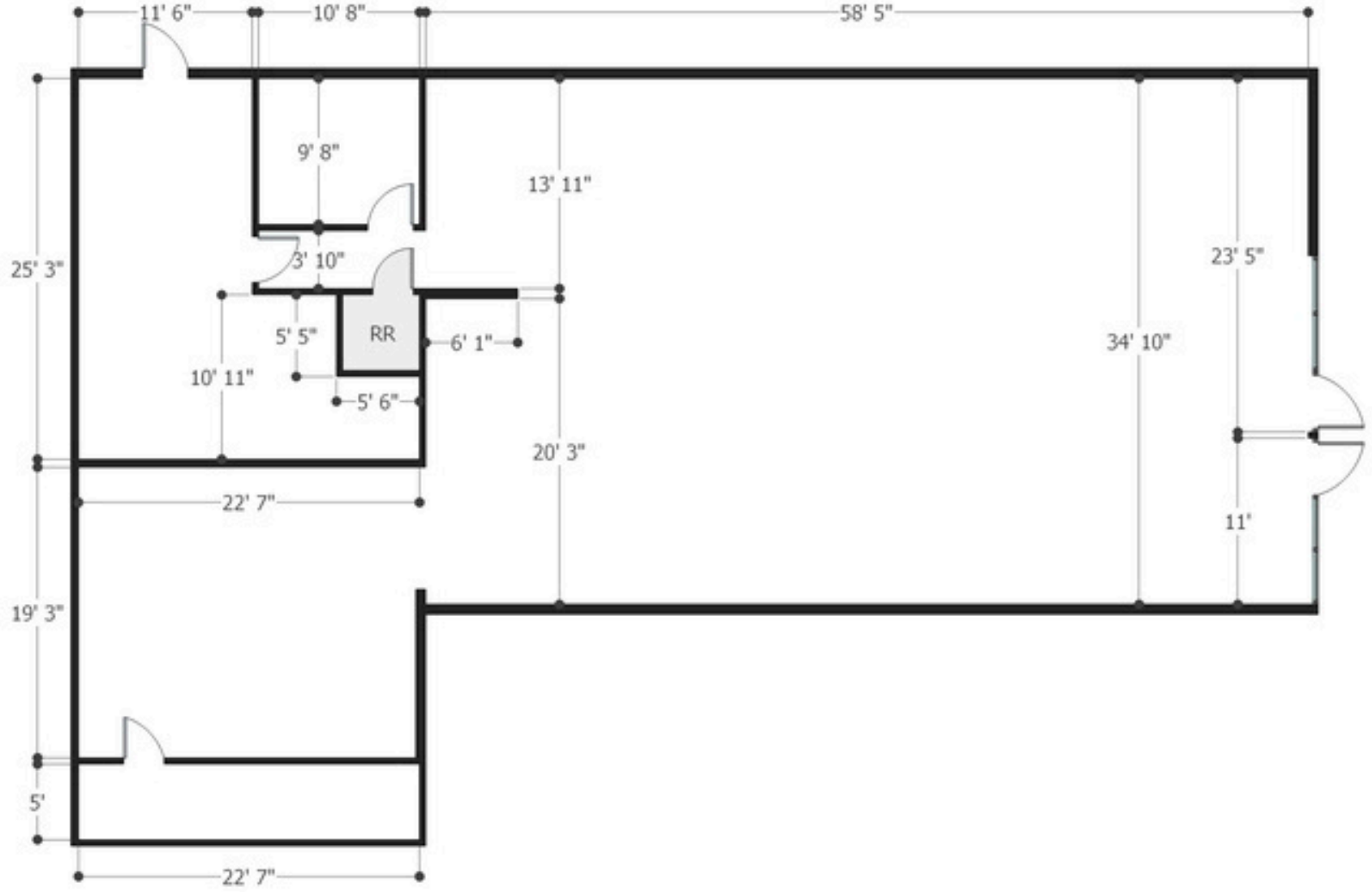


Cloud City Realty
5901 NE Shaver St
Portland, OR 97213
www.cloudcityrealty.com
971-339-1456





Floor Plan



LOCATION HIGHLIGHTS

Cloud City Realty
5901 NE Shaver St
Portland, OR 97213
www.cloudcityrealty.com
971-339-1456

