



# 2613 BURNEY & 1901 N HWY 360

**LAND ASSEMBLAGE OR INDIVIDUAL LAND DEVELOPMENT OPPORTUNITY  
+/- 6 AC FOR SALE  
ARLINGTON & GRANDE PRAIRIE, TEXAS**





# Property Overview

- Address:**
- 1901 North State Highway 360 Grand Prairie, TX 75050
  - 2613 Burney Rd Arlington, TX 76006

- Site Area:**
- **2613 Burney Road:** 4.145 AC
  - **1901 N Hwy 360:** 2.375 AC

- Zoning:**
- **2613 Burney:** Zoned "PD", with most Community Commercial uses allowed; MF is a possibility.
  - **1901 N Hwy 360:** Light Industrial (LI)

- Utilities:**
- Available

## Property Highlights

- Two-parcel land assemblage adjacent to CCI's Tower 360 office property.
- 2613 Burney Road is situated just inside the City of Arlington; 1901 N Hwy 360 is located in Grand Prairie.
- Parcels may be evaluated individually or together, depending on buyer use and site plan requirements.
- North Hwy 360 corridor location with nearby office, multifamily, and commercial uses.
- Prior buyer interest has focused on commercial redevelopment, townhome feasibility, and secondary access considerations



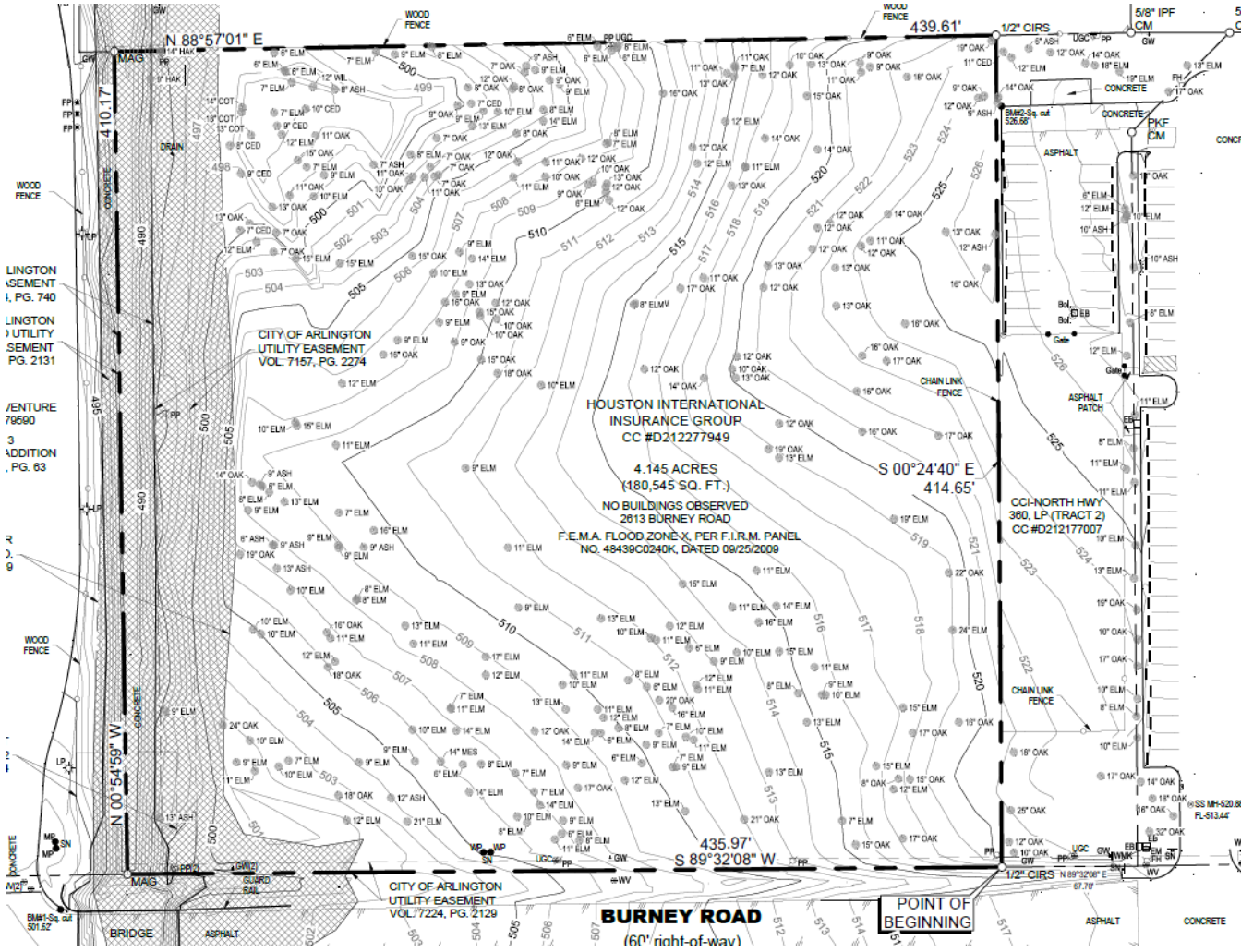
## CONTACT:

**Kris Keck**, Land Acquisition, Sales & Development  
512.628.2765  
kkeckmd@capitalcommercial.com

**Chris Durbin**, Analyst  
512.628.2781  
cdurbin@capitalcommercial.com



# Survey – 2613 Burney Road



## CONTACT:

**Kris Keck, Land Acquisition, Sales & Development**  
 512.628.2765  
 kkeckmd@capitalcommercial.com

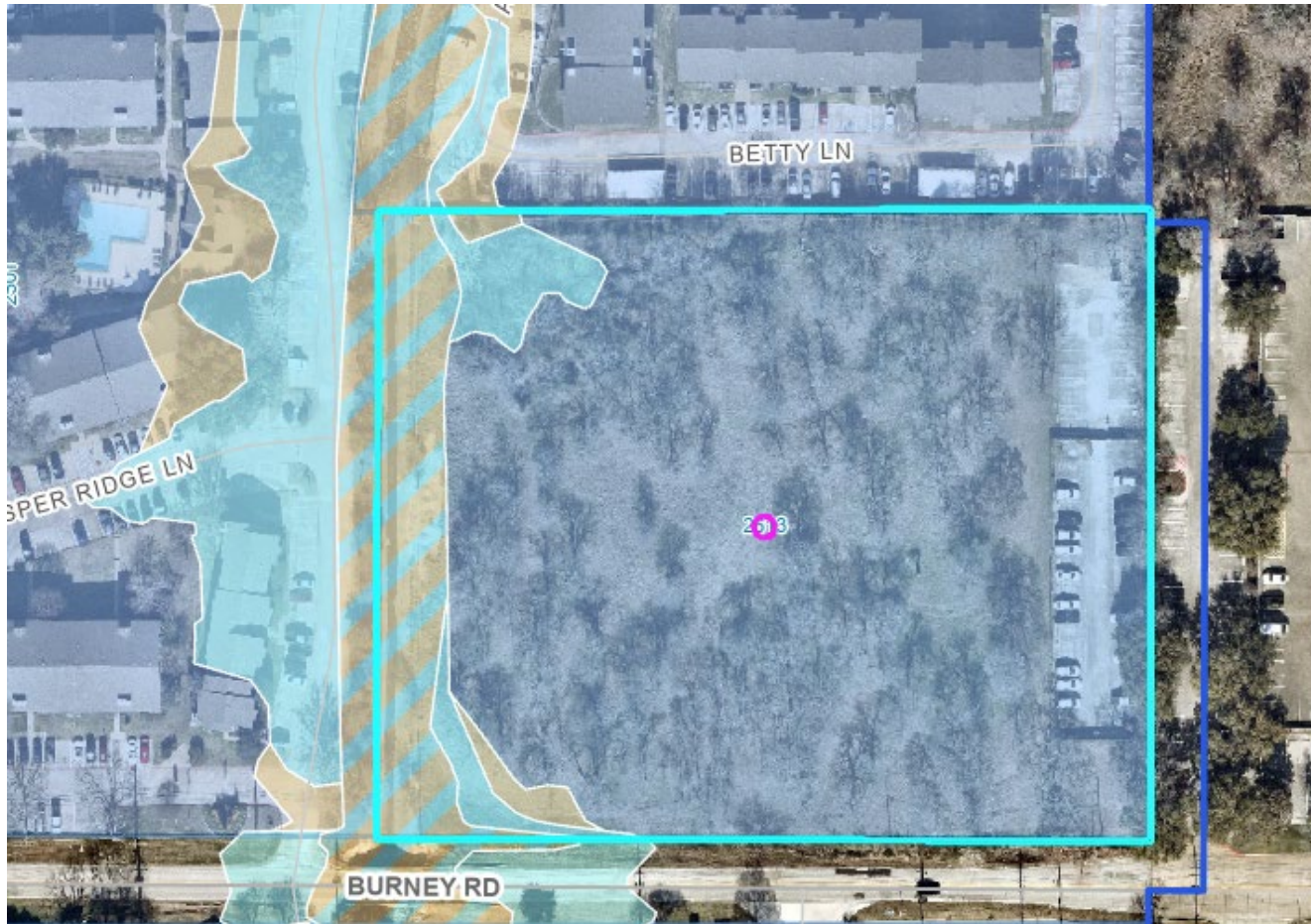
**Chris Durbin, Analyst**  
 512.628.2781  
 cdurbin@capitalcommercial.com







# Floodplain – 2613 Burney Rd

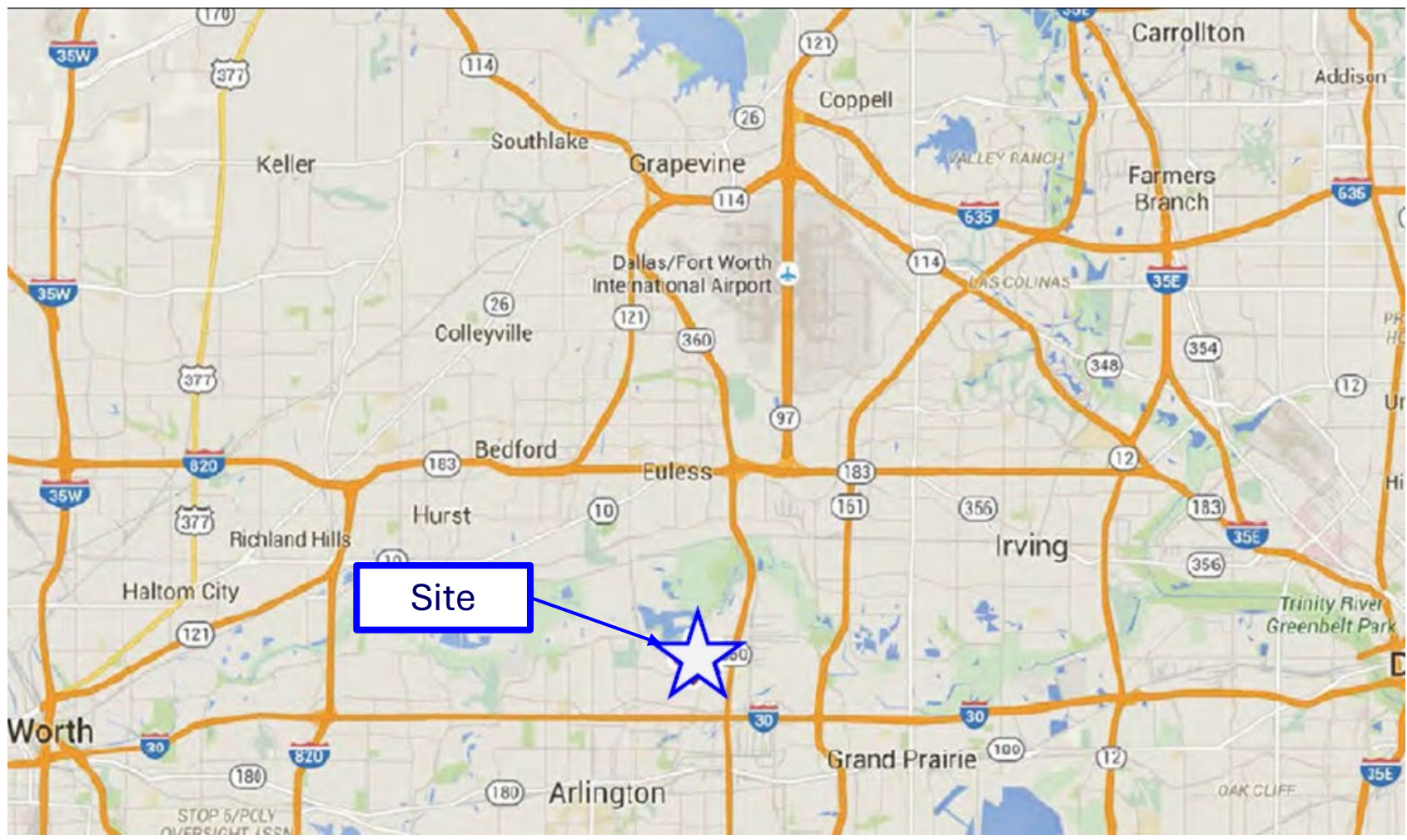


## CONTACT:

**Kris Keck**, *Land Acquisition, Sales & Development*  
512.628.2765  
kkeckmd@capitalcommercial.com

**Chris Durbin**, *Analyst*  
512.628.2781  
cdurbin@capitalcommercial.com

# Location



## CONTACT:

**Kris Keck**, Land Acquisition, Sales & Development  
512.628.2765  
kkeckmd@capitalcommercial.com

**Chris Durbin**, Analyst  
512.628.2781  
cdurbin@capitalcommercial.com