

pacific arts plaza

675 Anton Boulevard | Suite 200

Flex+[®]
BY IRVINE COMPANY



675 Anton Boulevard

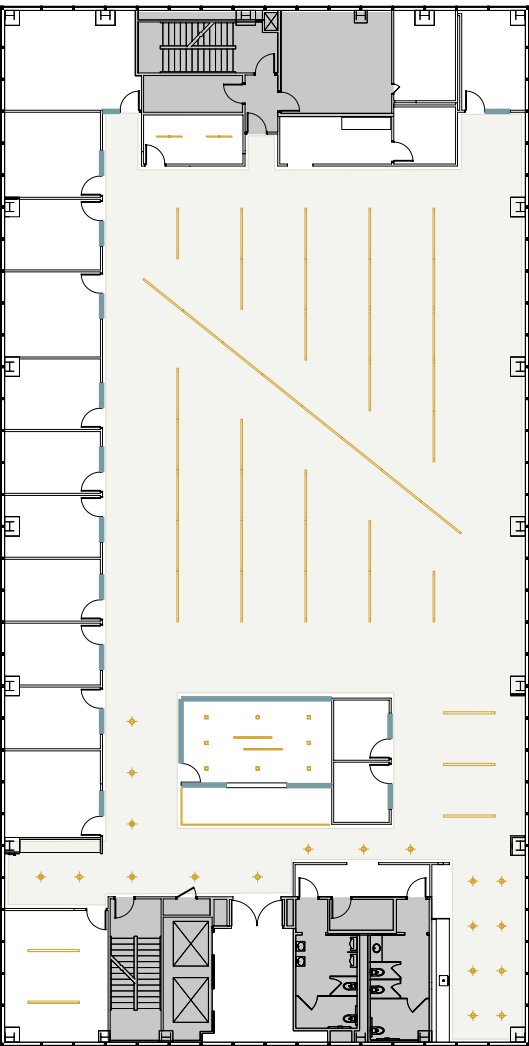
suite 200

total size
±13,164 sqft

team size
58-76

private offices
12

meeting rooms
4



— GLASS  LIGHTS  OPEN CEILING



675 anton boulevard
suite 200



open ceiling + polished concrete + specialty lighting

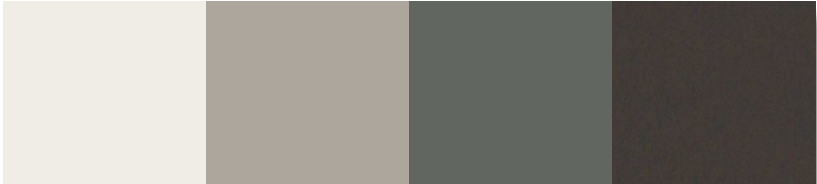


675 Anton Boulevard

suite 200



flooring



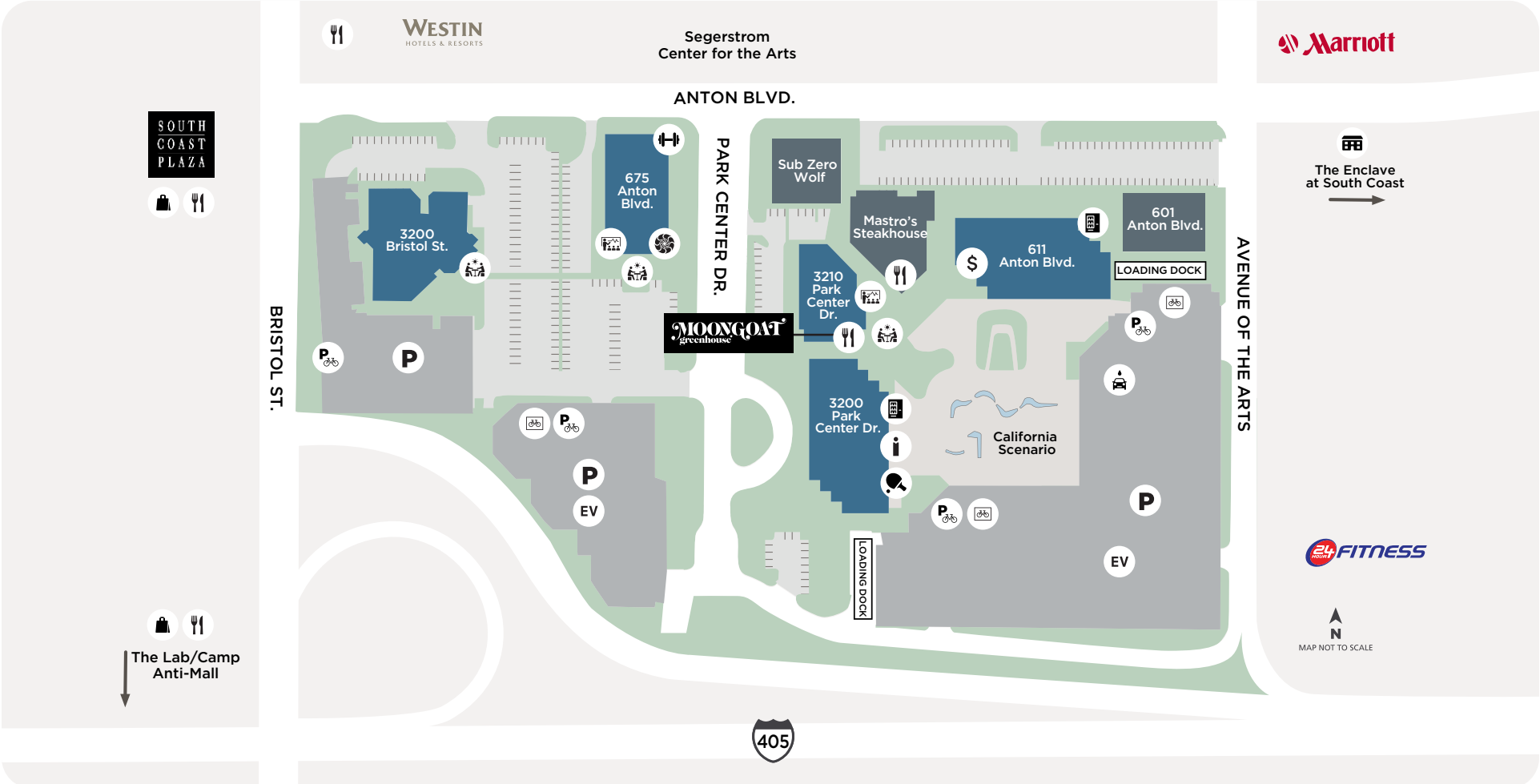
paint scheme



breakroom



pacific arts plaza



- APARTMENTS
- ATM
- AUTO DETAILING
- BIKE LOCKERS
- BIKE PARKING
- CAFE/ RESTAURANT
- CONFERENCE CENTER
- CUSTOMER RESOURCE CENTER
- DRY CLEANING
- EV CHARGING
- FITNESS
- GAME LOUNGE
- MAIL ROOM
- OUTDOOR WORKSPACE (WIFI-ENABLED)
- PARKING OFFICE
- PARKING STRUCTURE
- VENDING MACHINE



modern venue meeting & event center



flexplus.com | 408.330.0100

All properties for lease by Irvine Management Company, a licensed real estate broker, DRE LIC. #02041810. Product and amenities are subject to availability. Images may not be to scale, all renderings/pictures shown are for information and illustration purposes only and are subject to change. Not all features available in all communities. Furniture not included. Not a representation or warranty. ©2026 Irvine Management Company. All Rights Reserved. The Sunwave, Irvine Company and Flex+ are registered trademarks of Irvine Management Company.

Flex+
BY IRVINE COMPANY