

Dierbergs Town Center



Development

For More Information Contact:

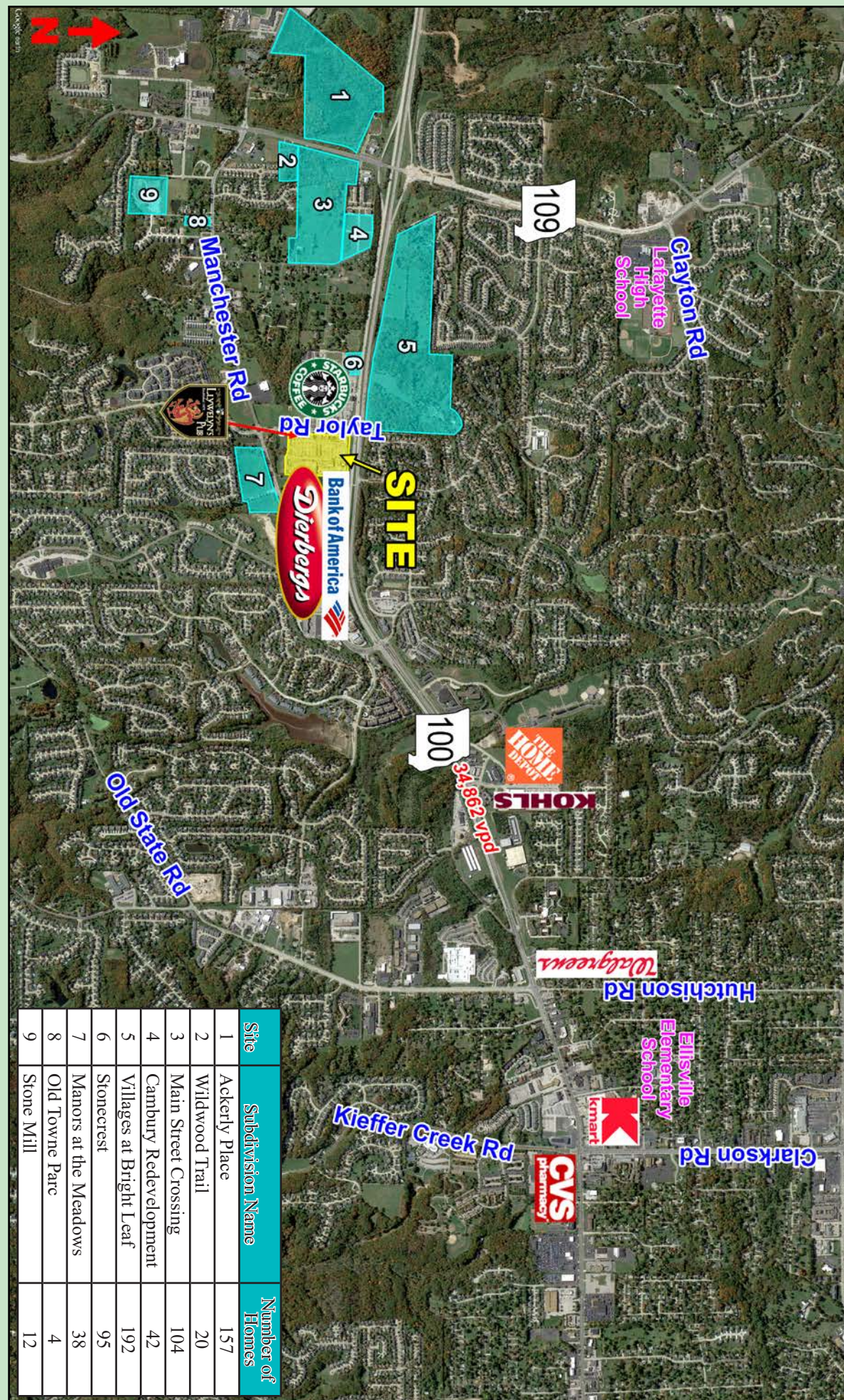


Weller Meyer

314-492-5007
wmeyer@caplaco.com

11850 Studt Avenue
P.O. Box 419121
St. Louis, Missouri 63141

www.caplaco.com



11850 Studt Avenue
P.O. Box 419121
St. Louis, Missouri 63141
Telephone: (314)991-8900
Fax: (314)991-2474

The information contained herein was obtained from sources deemed reliable, however, Capitol Realty Group makes no guarantees as to the completeness or accuracy thereof. This information is subject to error, omission, change in price or conditions, prior sale or lease, or withdrawal without notice.

Demographics

	1-Mile	3-Mile	5-Mile
2024 Estimated Population	11,204	35,509	86,204
2024 Estimated Households	4,268	13,282	32,149
2024 Avg. Household Income	\$152,548	\$169,502	\$170,622



	<i>Tenant</i>	<i>Size (sf)</i>
1	Massage Envy	2,266
2	Town Center Dental	3,200
3	Subway	1,600
4	Available	1,524
5	Pacific Beach	2,058
6	Land of Smile - Thai	1,200
7	Color Nail	1,200
8	American Mattress	3,583
9	Sneha Spice Grocery	1,599
10	Mathnasium	1,600
11	Magnolia Soap	1,322
	Dierbergs	73,947
12	West Oak Cleaners	1,093
13	Great Clips	981
14	Travel Tyme	981
15	Optimal Health Chiropractic	1,200
16	Singers Ice Cream	1,600
17	Sunny Street Cafe'	4,202
18	Mint & Martini Indian Cuisine	6,547
19	Edward Jones	1,011
20	Anytime Fitness	5,536
21	Available	1,590
22	Premier Martial Arts	1,600
23	Happy Go Lucky Outfitters	1,677
24	One Lucky Mutt	1,680
25	El Maguery	4,964
26	Clarkson Eyecare	2,172
27	St. Louis Bread Company	5,639
	Bank of America	4,700

