



# 4510 Weybridge Lane

Greensboro, North Carolina 27407

**SPACE AVAILABLE**

**From 9,976  
to 33,234  
Square Feet**

**Leasing  
Contacts:**

**Gene Tillman**

Mobile: (336) 706-6760  
gtillman@kourycorp.com

**or**

**Travis Carter, CCIM**

Mobile: (336) 255-4693  
tcarter@kourycorp.com

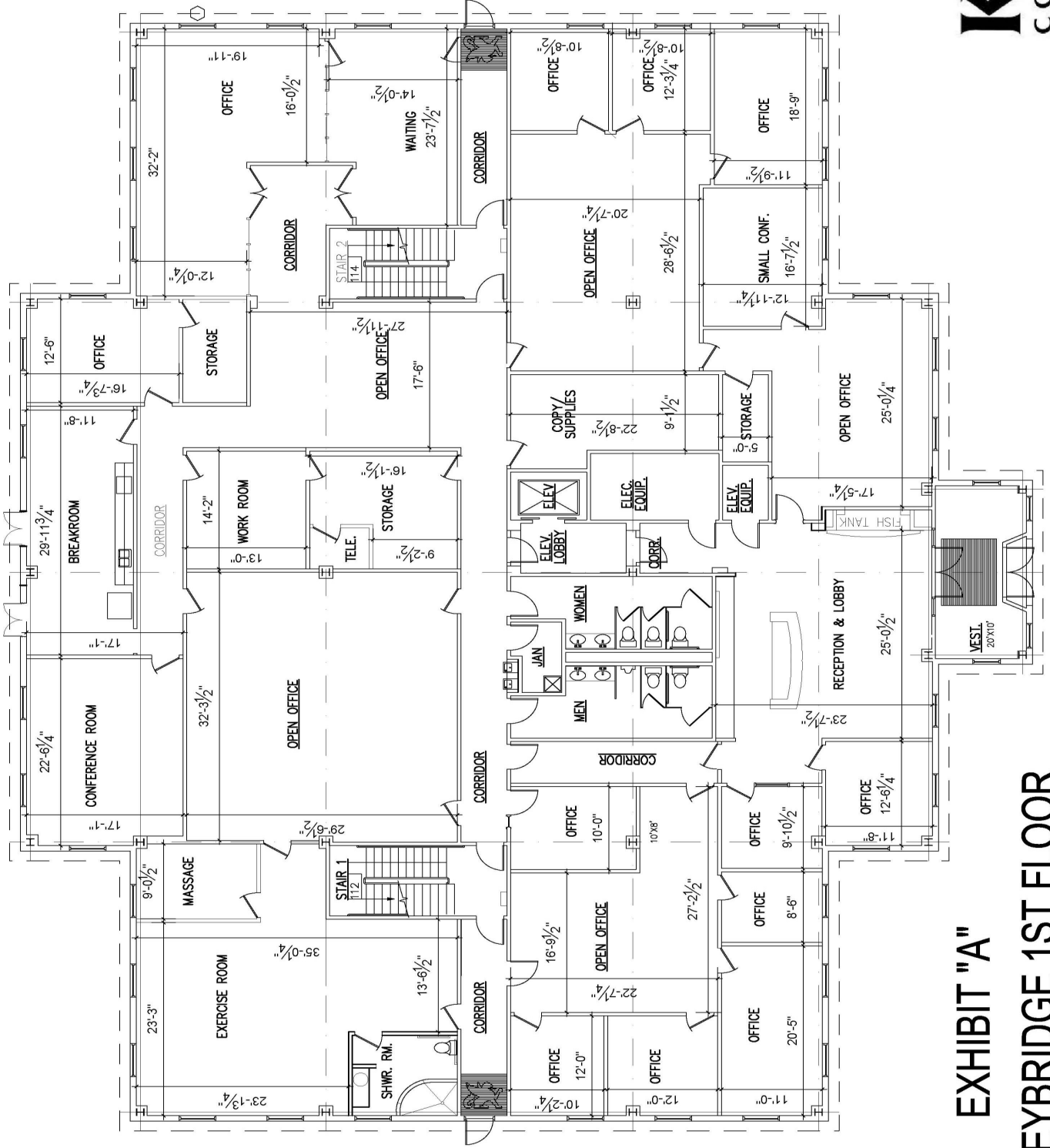


- 4510 Weybridge Lane is a Class “A” office property located in the Grandover Commons Development at the eastern entrance of Grandover Corporate Park and overlooks Grandover Resort and Conference Center.
- Strategically positioned for accessibility and convenience, Grandover Corporate Park is directly off Interstate 85 and one exit from Interstates 73 and 840 (Greensboro Urban Loop) which provides direct access to Interstate 40 and the Piedmont Triad International Airport.
- This stunning office property sits alongside the 15<sup>th</sup> green of the Grandover East golf course and shares spectacular views with the Atlantic Coast Conference headquarters, The North Carolina Association of Realtors, Technology Concepts and Design, Inc. and Global Brands Group, Inc.

**KOURY**  
CORPORATION  
BUILDER & DEVELOPER

**336-299-9200**  
[www.kourycorp.com](http://www.kourycorp.com)



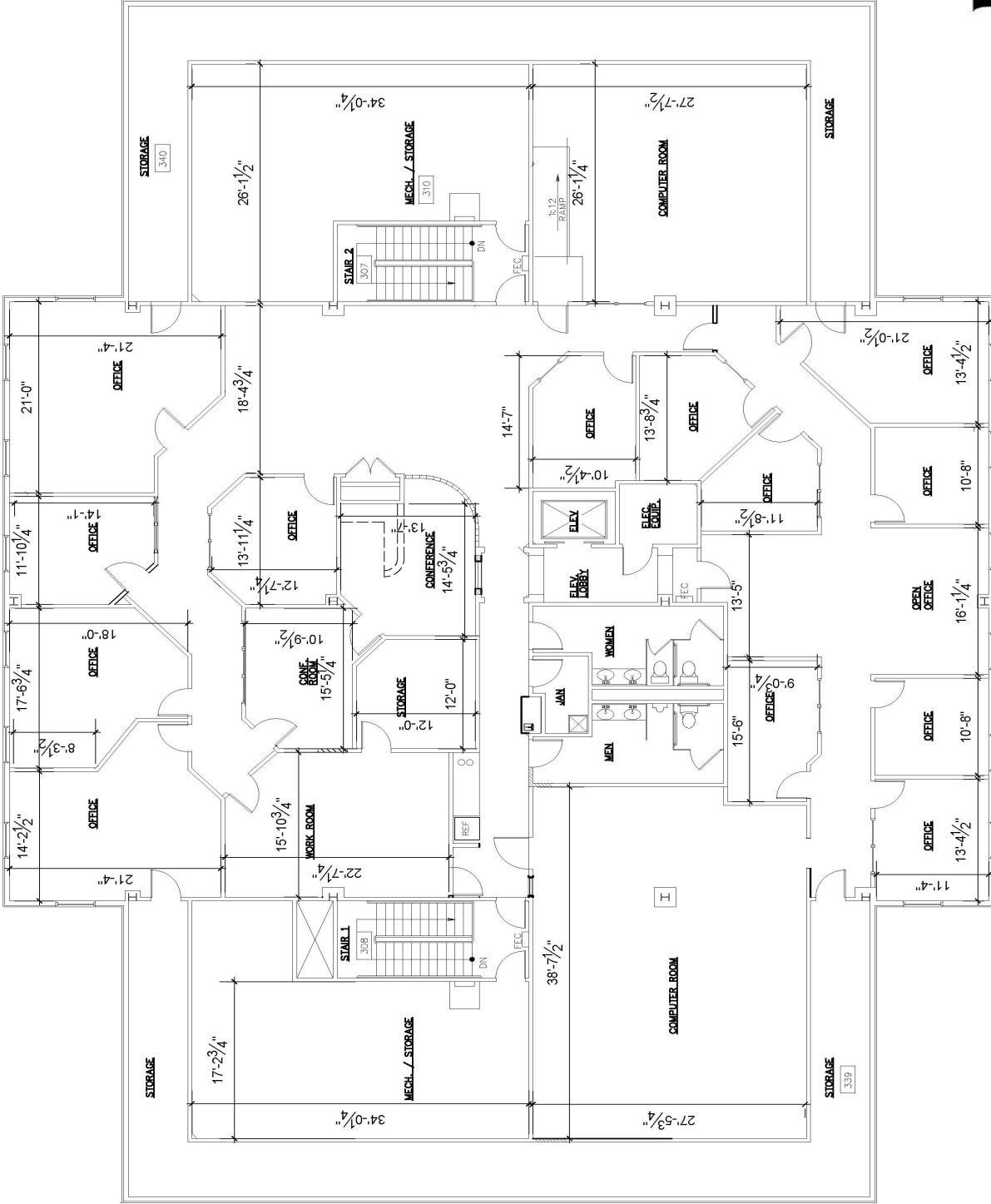


11,587 S.F.

**KOURY**  
CORPORATION  
BUILDER & DEVELOPER

EXHIBIT "A"  
4510 WEYBRIDGE 1ST FLOOR





9,976 S.F.

**KOURY**  
CORPORATION  
BUILDER & DEVELOPER

4510 WEYBRIDGE 3RD FLOOR