

LEASE

THE CREEKSIDE MALL
3501 SW 2nd AVE, Gainesville, FL 32607



PROPERTY DESCRIPTION

The Creekside Mall is located blocks from Downtown, UF, and within walking distance of many apartments. The plaza currently houses a mix of retail and office spaces, as well as the very popular Las Carretas Mexican Restaurant! Lease rates are based upon 5 year terms.

PROPERTY HIGHLIGHTS

- Prime location in Gainesville, FL
- Well-maintained building
- Ample parking for tenants and visitors
- Versatile space suitable for various businesses
- Beautiful landscaping and outdoor areas
- Close to many amenities

OFFERING SUMMARY

Lease Rate:	\$15.90 SF/yr (NNN)
Pass Thru Rate:	\$4.16/SF
Available SF:	2,102 SF
Lot Size:	4.32 Acres
Building Size:	47,769 SF
Zoning:	MU-1

DEMOGRAPHICS	0.25 MILES	0.5 MILES	1 MILE
Total Households	634	1,354	4,142
Total Population	1,176	2,980	10,033
Average HH Income	\$94,496	\$83,350	\$62,164
Traffic Count:			

Craig Carter
(352) 339-4038
ccarter@mmparrish.com

Dean R. Cheshire
(352) 745-1883
Dean@mmparrish.com

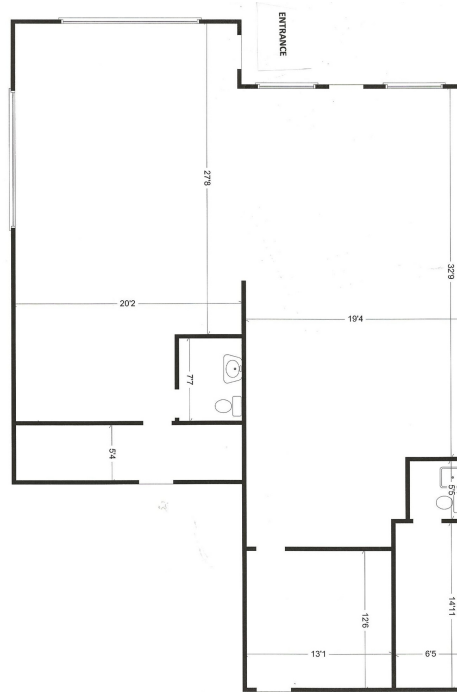
Michelle Carter
(352) 339-5734
mcarter@mmparrish.com



**COLDWELL BANKER
COMMERCIAL**
M.M. PARRISH REALTORS

LEASE

THE CREEKSIDE MALL
3501 SW 2nd AVE Gainesville, FL 32607



LEASE INFORMATION

Lease Type:	NNN	Lease Term:	36 months
Total Space:	2,102 SF	Lease Rate:	\$15.90 SF/yr

AVAILABLE SPACES

SUITE	SIZE (SF)	LEASE TYPE	LEASE RATE	DESCRIPTION
Suite M/N	2,102 SF	NNN	\$15.90 SF/yr	Suite M has 2 entrances/exits and private restrooms. Unit can possibly be demised into 2 smaller units for the right tenant.

Craig Carter
(352) 339-4038
ccarter@mmparrish.com

Dean R. Cheshire
(352) 745-1883
Dean@mmparrish.com

Michelle Carter
(352) 339-5734
mcarter@mmparrish.com



LEASE

THE CREEKSIDE MALL
3501 SW 2nd AVE Gainesville, FL 32607



Craig Carter
(352) 339-4038
ccarter@mmparrish.com

Dean R. Cheshire
(352) 745-1883
Dean@mmparrish.com

Michelle Carter
(352) 339-5734
mcarter@mmparrish.com

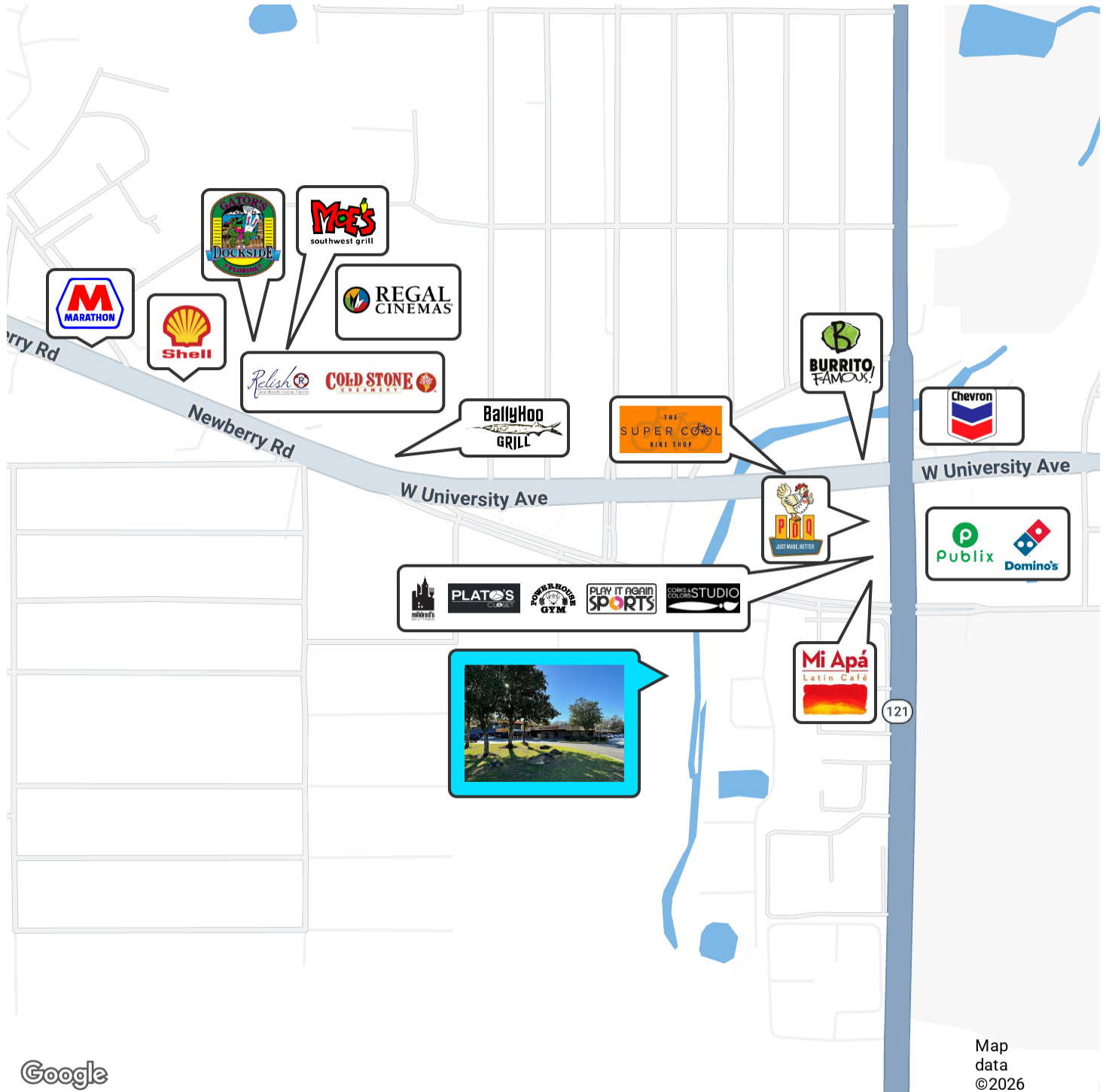


**COLDWELL BANKER
COMMERCIAL**
M.M. PARRISH REALTORS

LEASE

THE CREEKSIDE MALL

3501 SW 2nd AVE Gainesville, FL 32607



Craig Carter
(352) 339-4038
ccarter@mmparrish.com

Dean R. Cheshire
(352) 745-1883
Dean@mmparrish.com

Michelle Carter
(352) 339-5734
mcarter@mmparrish.com



**COLDWELL BANKER
COMMERCIAL**
M.M. PARRISH REALTORS



DEAN R. CHESHIRE, MBA
Licensed Real Estate Broker

352.745.1883
dean@mmparrish.com

MICHELLE CARTER
Commercial Realtor*

352.339.5734
mcarter@mmparrish.com

CRAIG CARTER
Commercial Realtor*

352.339.4038
ccarter@mmparrish.com

Craig Carter, Dean Cheshire, and Michelle Carter make up the CRE Pro Team. Their complementary skillsets make them formidable allies who will go the extra mile to bring closure for their clients. All three have been business owners in Alachua County for many years, which gives them insight into local laws and code requirements, relationships with folks within the industry, and a deep understanding of the needs of businesses and investors.

- **Highly Specialized:** 100% of their focus is commercial real estate.
- **Consistent Producers:** Awarded “Top Two” status for being in the top 2% of Coldwell Banker Commercial Realtors nationwide in 2023, with multi-million-dollar production year after year.
- **Global Resources:** The Team has the backing and longevity (since 1906) of Coldwell Banker Commercial agents and database assets around the U.S. and the world. Their brokerage, M.M. Parrish Realtors, who have been in our community since 1911, gives the CRE Pro Team local knowledge and global influence to make them a force in the commercial real estate market.
- **In-the-Know:** As members of the largest MLS in the state of Florida, the Team deploys listings on all the major commercial sites, including Loopnet/Costar, Crexi, CBC Worldwide, and more. Their strength in networking and regional relationships can bring off-market deals to their clients.
- **Anticipating Needs and Fixing Problems:** The Team identifies potential roadblocks before they become your problem and harnesses their resources to bring your deal to completion.

Call to see what the CRE Pro Team can do for you!

