

220 N. Smith Street

Suite 204

220 North Smith Street, Palatine, IL 60067,

United States

HAMILTON  
www.hamiltonpartners.com PARTNERS



## DETAILS

**Square Feet:** 5,674 S.F.

**Net Rent:** \$14.00/S.F.

**OP. Expense:** \$8.50/S.F.

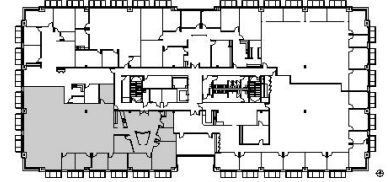
**Tax:** \$7.52/S.F.

**Gross Rent:** \$30.02/S.F.

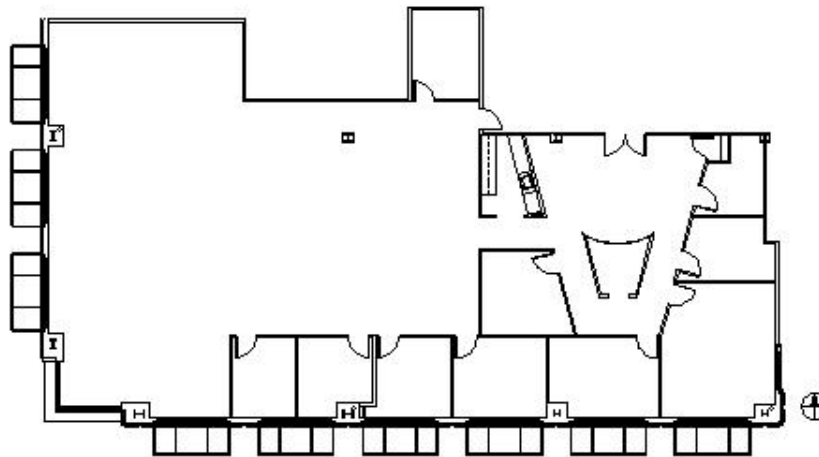
## SUITE FEATURES

- Will Vacate
- Large Open Area
- 5 Perimeter Offices
- 2 Conference Rooms
- Large Reception Area
- 3 Media / Storage Rooms
- Kitchen / Break Area
- Great Downtown Location
- Walking Distance to Metra
- Restaurants & Shopping

## SECOND FLOOR PLAN



## SPACE PLAN



HAMILTON PARTNERS - Sponsoring Broker

**Brian Lunt**

[blunt@hpre.com](mailto:blunt@hpre.com)

P 847-459-2249

F 847-459-8918