 **JLL** SEE A BRIGHTER WAY

One Triton Office Park

13551 Triton Park Blvd, Suite 1000
Louisville, KY 40223

13,329 SF sublease opportunity in Class A, fully furnished space

13,329 SF
Available

1st Floor
Lobby Exposure

Fully Furnished
Move-In Ready

7/1,000 SF
Parking Ratio

On-Site Mgmt
Management

Oct 31, 2029
Sublease Expiration



A Distinctive Address for a Discerning Tenant

Immediately available for sublease, Suite 1000 at One Triton Office Park offers 13,329 SF of first-floor, fully furnished Class A office space in one of Louisville's most prestigious business addresses. Thoughtfully designed for modern function with unmistakable architectural presence, this turnkey opportunity is ready for immediate occupancy through October 31, 2029. The suite features private offices, open workstations, boardroom, collaborative lounges, break room, and a full kitchen — everything your organization needs from day one.





Everything Your Team Needs, Already In Place

Fully Furnished

Eliminates capital outlay and enables a rapid, seamless transition for your organization.

Open Workstations

Flexible open-plan areas with modern systems furniture — room to collaborate and grow.

Collaborative Lounges

Informal gathering areas that foster creativity and team connection.

Private Offices

Multiple windowed offices with abundant natural light and park-like views.

Conference & Boardroom

Fully equipped boardroom with AV plus additional conference rooms.

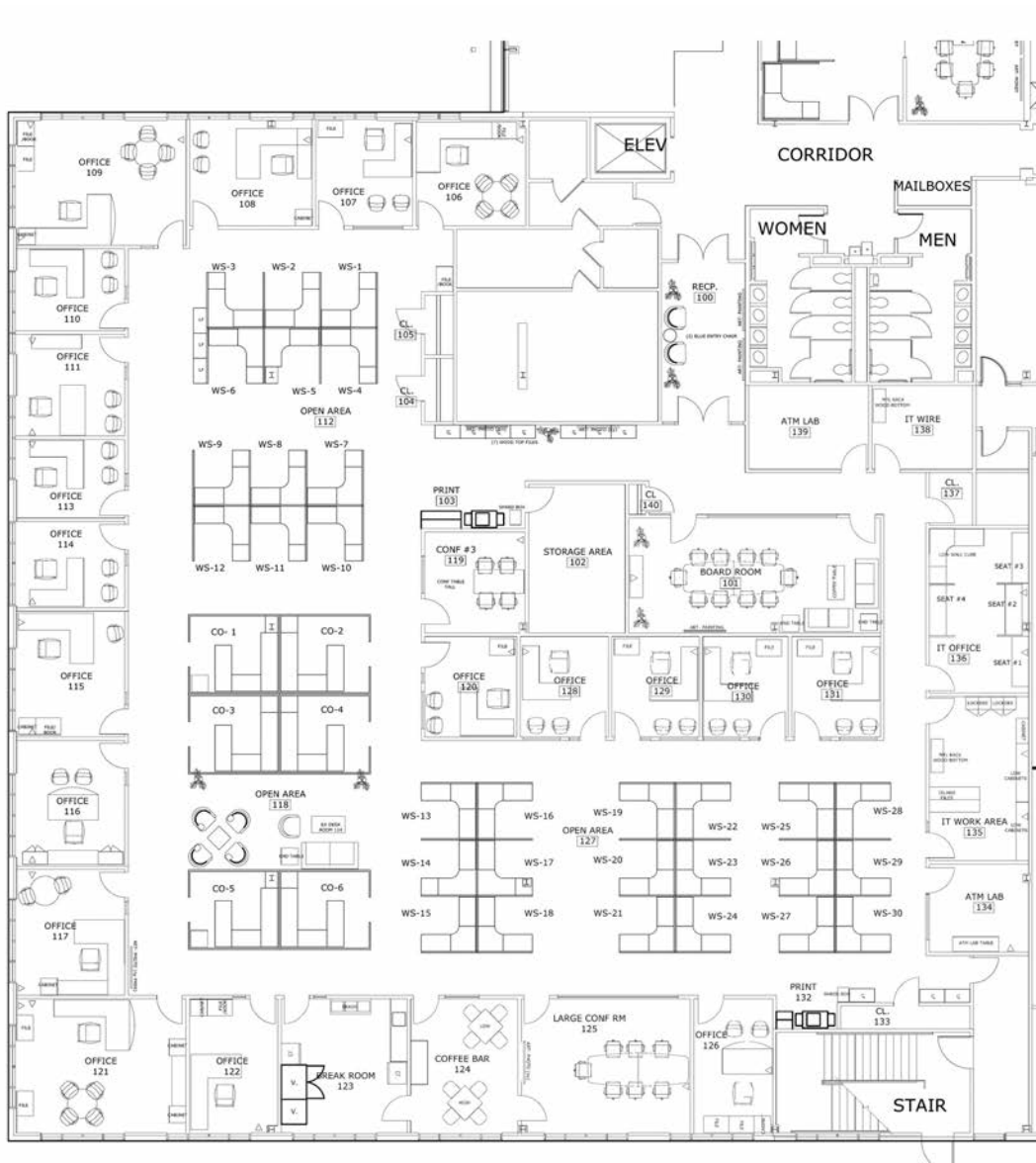
Full Kitchen & Break Room

Spacious full kitchen plus dedicated break room — amenity-grade experience.



Suite 1000

The 13,329 SF plan balances enclosed and open environments. A reception anchors the entry, private offices line the perimeter for natural light, and open workstation clusters, co-working zones, and soft-seating lounges fill the core. IT rooms, storage, print stations, and a large break room with coffee bar ensure full operational efficiency.



Doug Owen, SIOR
 doug.owen@jll.com
 +1 502 777 4724

Yandell Wood, SIOR
 yadell.wood@jll.com
 +1 502 608 5432