



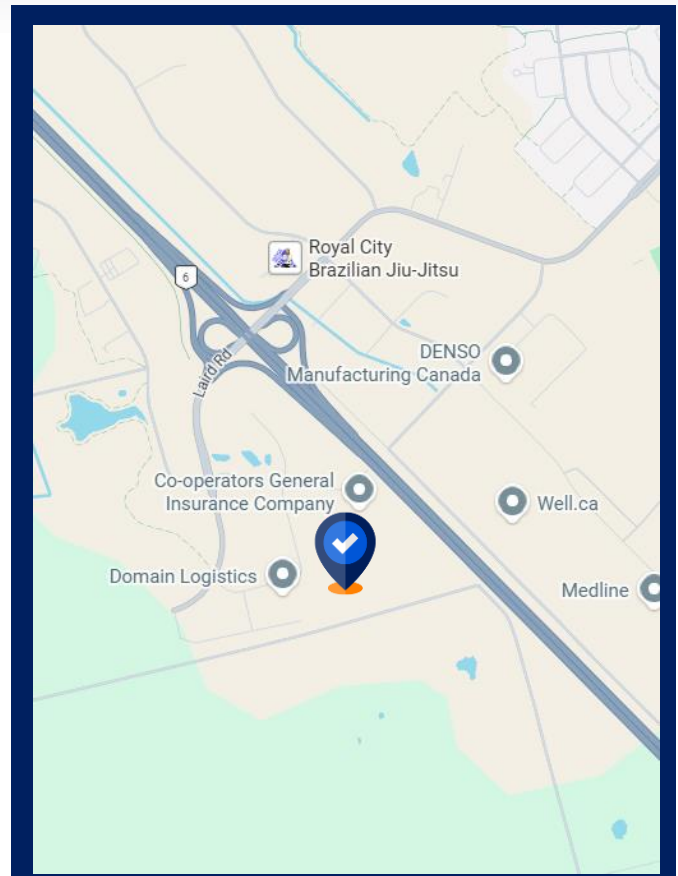
Sublease Available

Space Profile

Total Rentable Area	48,872 SF
Net Rent	Contact Agents
TMI	\$4.26 (2026 est.)
Doors	7 TL 1 DI
Term	February 27th, 2029
Clear Height	32'
Availability	TBD

Features

- Modern distribution facility built in 2022
- Strategically located minutes from the 401 in a modern industrial business park.
- Efficient warehouse layout with minimal office (2 private offices, one small boardroom, kitchen and lunchroom.
- Driver facilities and service counter located near shipping doors for convenient pick up, drop off and customer access.
- Ample employee parking at front and back of building.



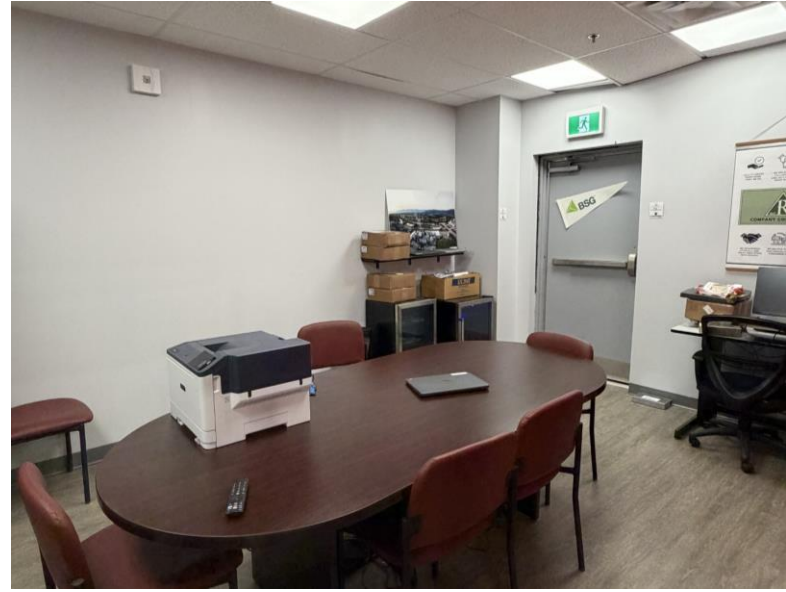
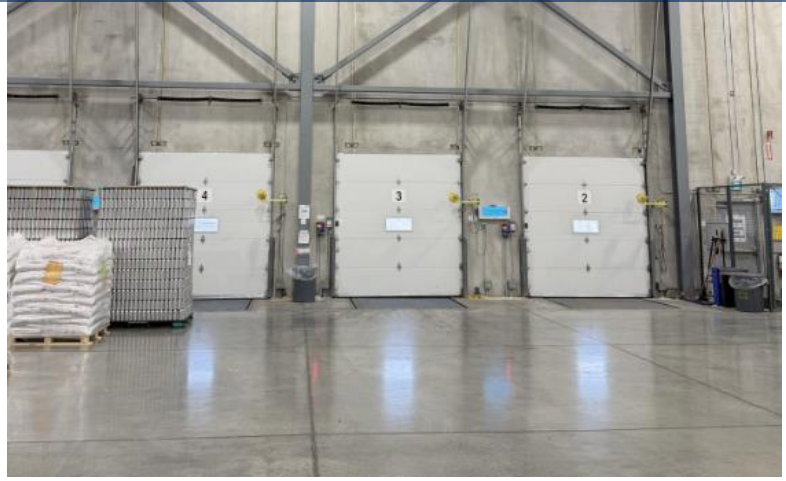
Mark Bleiwas MBA
 Managing Principal,
 Sales Representative
 416.953.7400
 mbleiwas@cresa.com



Zach Brewerton
 Senior Advisor,
 Sales Representative
 647.383.8816
 zbrewerton@cresa.com

Even though obtained from sources deemed reliable, no warranty or representation, express or implied, is made as to the accuracy of the information herein, and it is subject to errors, omissions, change of price, rental or other conditions, withdrawal without notice, and to any special listing conditions imposed by our principals.

65 Quarterman Road, Guelph, ON



Mark Bleiwas MBA
Managing Principal,
Sales Representative
416.953.7400
mbleiwas@cresa.com



Zach Brewerton
Senior Advisor,
Sales Representative
647.383.8816
zbrewerton@cresa.com

cresa