



Childress  
Klein

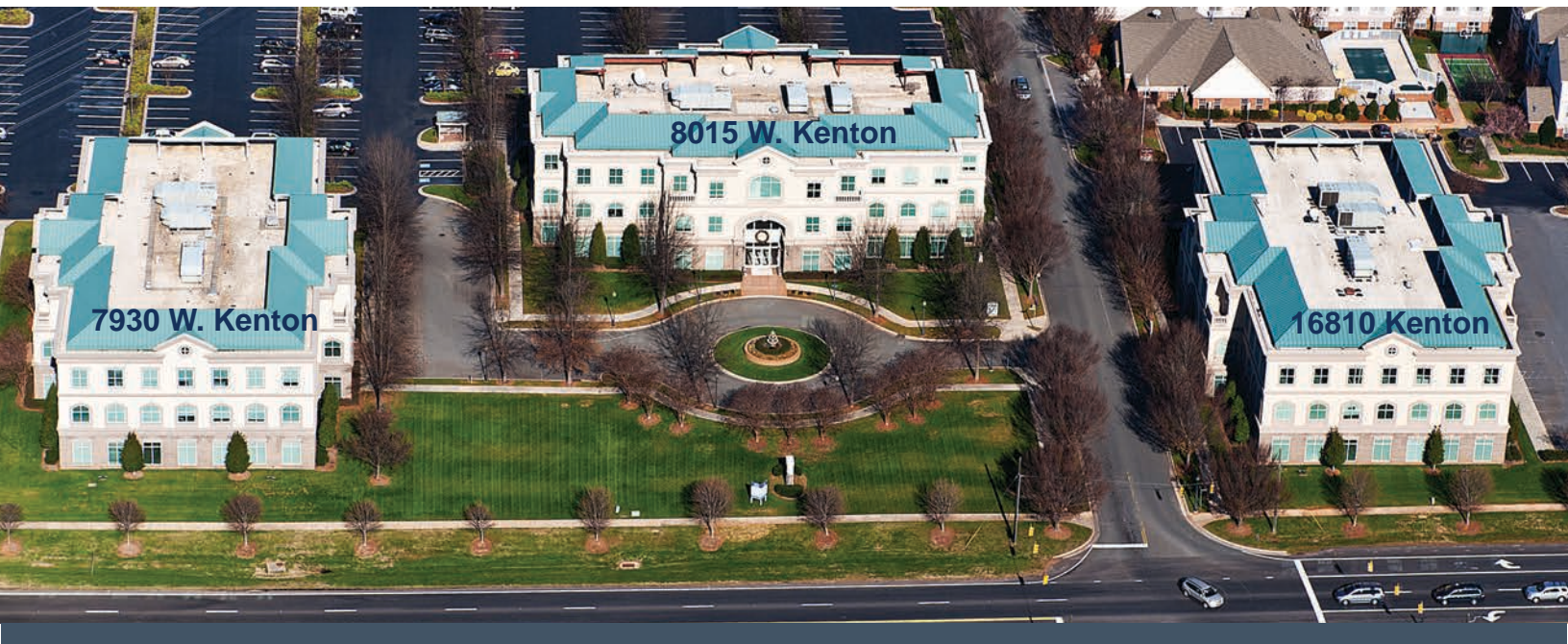
# KENTON CIRCLE

Huntersville, NC

LAKE NORMAN'S MOST ACCESSIBLE  
HIGH-END OFFICE LOCATION



## KENTON CIRCLE



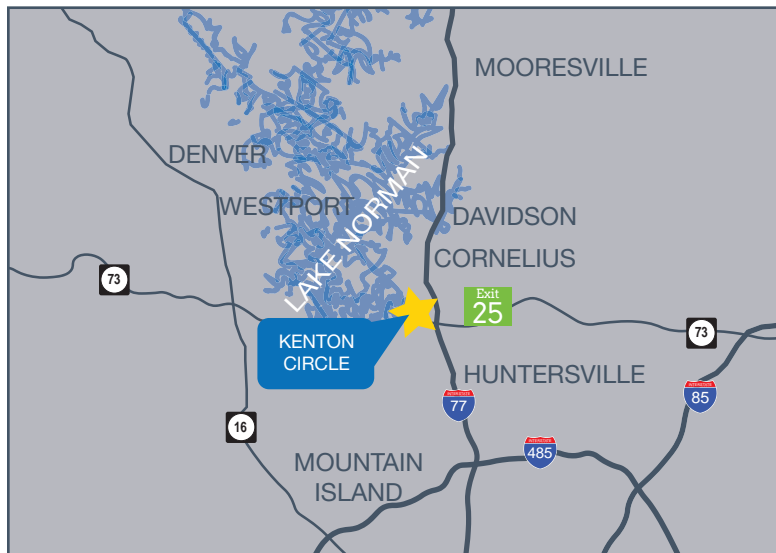
### PROPERTY HIGHLIGHTS

#### Building Info:

- ◀ Year Built: 1999, 2001, 2005
- ◀ Typical Floor Plate Size: +/- 15k SF
- ◀ Number of Floors: 3
- ◀ Parking: +/- 4 spaces / 1,000

#### Childress Klein Role:

- ◀ Property Manager / Leasing



Kenton Circle is located along Lake Norman's most important east/west connector, NC-73 and offers unmatched access to I-77, Birkdale Village and many of the lake's most desirable neighborhoods.

LAKE NORMAN'S MOST ACCESSIBLE  
HIGH-END OFFICE LOCATION

JETTON PARK

LAKE NORMAN

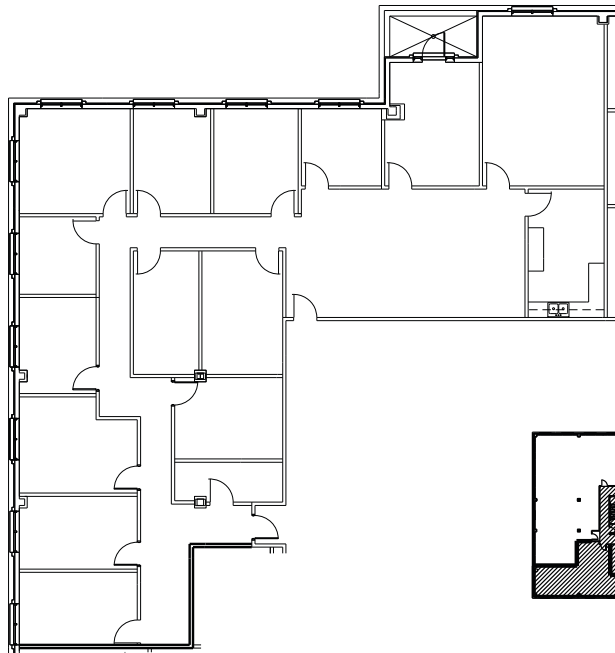
VINEYARD POINT  
YACHT & TENNIS CLUB

KENTON CIRCLE

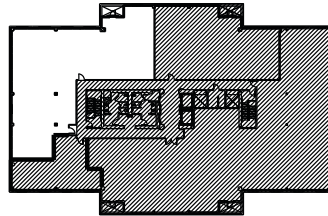
73

SAM FURR RD

## AVAILABLE SPACE



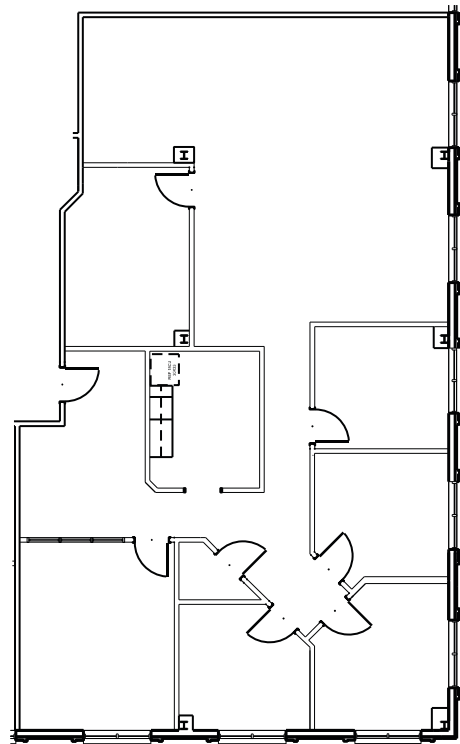
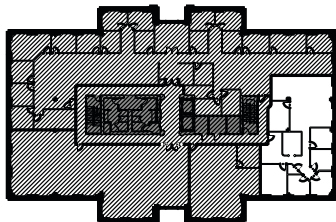
**7930-SUITE 310**  
**W. KENTON**  
**CIRCLE**  
Third Floor  
+/- 4,109 RSF



## 16810-SUITE 220

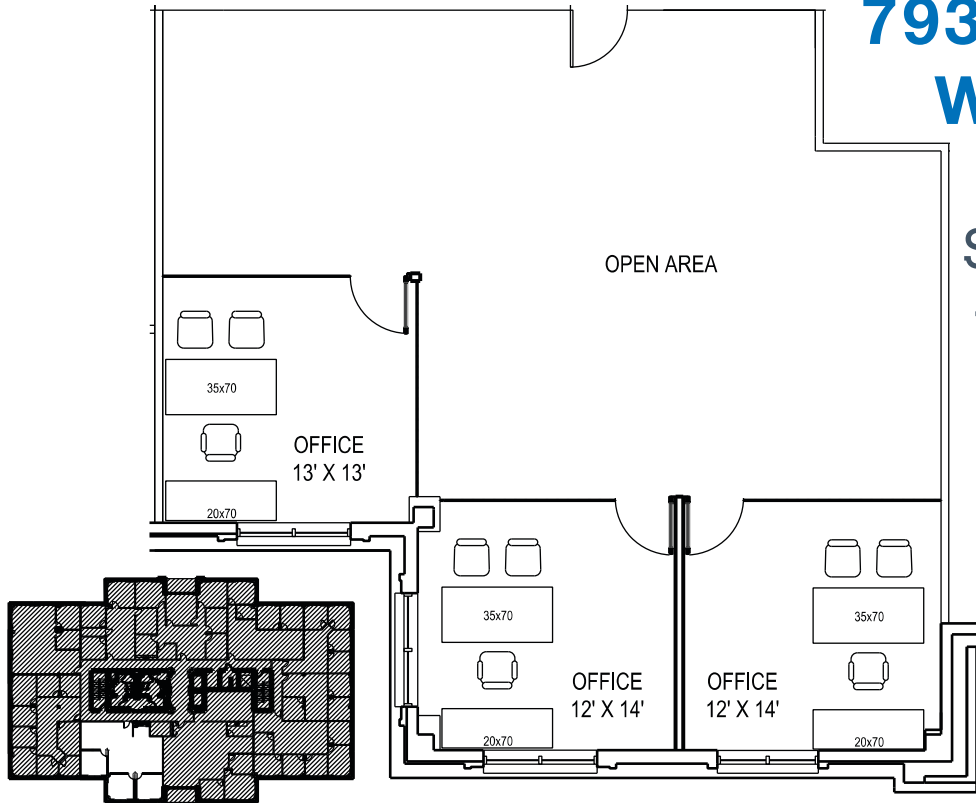
## KENTON CIRCLE

Second Floor  
+/- 2,688 RSF



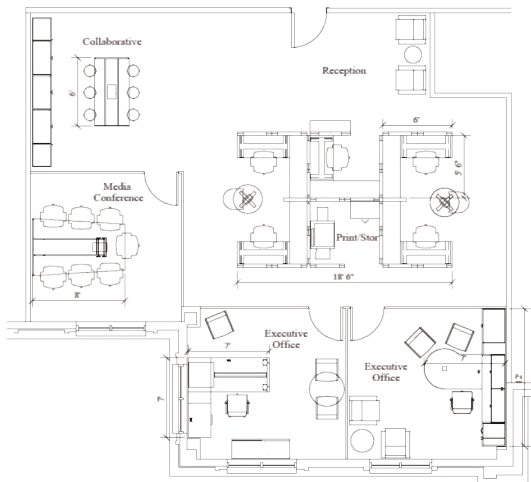
# AVAILABLE SPACE

**7930-SUITE 200**  
**W. KENTON**  
**CIRCLE**  
Second Floor  
+/- 1,831 RSF

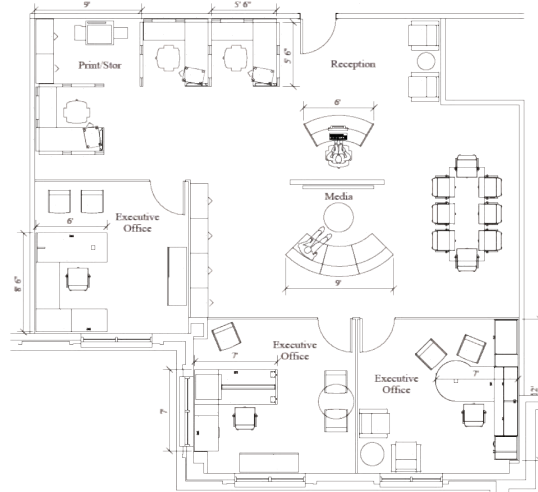


## LAYOUT CONCEPTS

CONCEPT 1



CONCEPT 2



KENTON CIRCLE

**7930-SUITE  
200  
W. KENTON  
CIRCLE**  
Second Floor  
+/- 1,831 RSF



# KENTON CIRCLE



**KENTON CIRCLE III**

**KENTON CIRCLE I**

**KENTON CIRCLE II**

## Ideally Located

- ◀ Adjacent to the Lake's finest neighborhoods
- ◀ Fronting on HWY 73 - The most important East/West connector at the lake
- ◀ Surrounded by myraid restaurant and retail amenities



**CK** Childress  
Klein

---

**One Wells Fargo Center  
301 S College St #2800  
Charlotte, NC 28202**

**o: 704.342.9000**

**e: [OfficeLeasing@childressklein.com](mailto:OfficeLeasing@childressklein.com)**

**[ChildressKlein.com](http://ChildressKlein.com)**