

Oxford Companies  
734.665.6500  
oxfordcompanies.com



Integrated  
Real Estate  
Services



## Office Building For Lease

Nickels Arcade

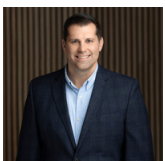
326-330 S State St, Suite 224

Ann Arbor, MI 48104

186 SF

\$25 SF/yr (MG)

Available 08/01/2026



Contact Brad Fenkell for  
more information or to  
schedule a tour.

Office: 734.665.6500  
Cell: 734.395.7135  
bfenkell@oxfordcompanies.com

Nickels Arcade

326-330 S State St, Suite 224

Ann Arbor, MI 48104



Integrated  
Real Estate  
Services



## OFFERING SUMMARY

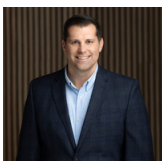
Lease Rate:	\$25 SF/yr (MG)
Short Term	OXIO Rate: \$600/mo
Building Size:	41,857 SF
Available SF:	186 SF
Lot Size:	0.35 Acres
Year Built:	1917
Zoning:	D1
Submarket:	Washtenaw W of 23

## PROPERTY OVERVIEW

Nickels Arcade is one of Ann Arbor's most iconic landmarks, and offers both office and retail suites that offer tremendous differentiation in the downtown core of the city. Located downtown and directly across the street from University of Michigan's central campus, Nickels Arcade is one Ann Arbor's most beloved and frequented locations. The building's unique architecture and charm add to consistent foot traffic and tremendous visibility. Tenants at Nickels Arcade benefit from their proximity to other popular shops and restaurants and the community of businesses at this landmark property.

## PROPERTY HIGHLIGHTS

- Landmark downtown Ann Arbor structure built in 1917
- Listed on the National Register of Historic Places
- Directly across from University of Michigan's central campus
- Charming, covered walkway spans between S. State and Maynard
- Street-level retail with 2 floors of office spaces above
- Streamlined leasing experience for convenience and ease
- Professionally managed with 24/7 on-call emergency maintenance



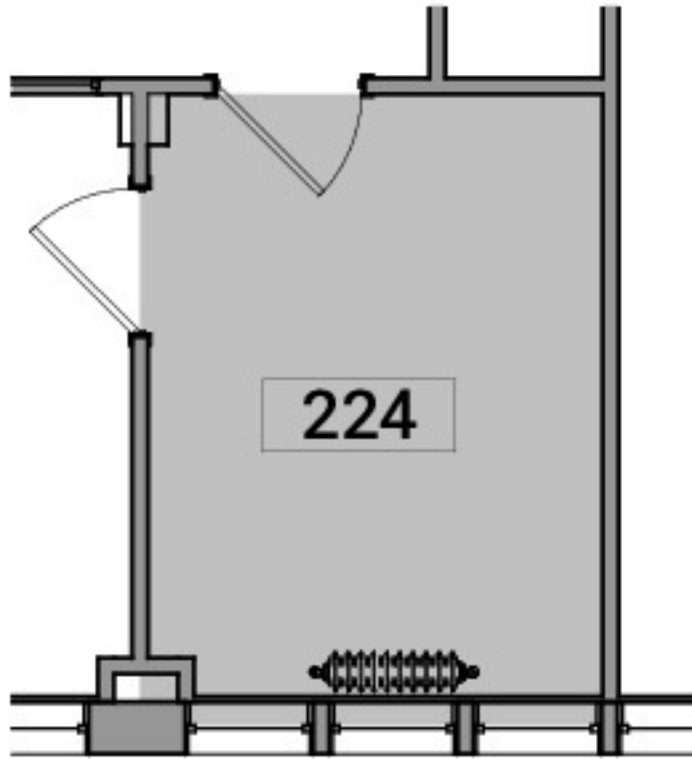
Contact Brad Fenkell for more information or to schedule a tour.

Office: 734.665.6500  
Cell: 734.395.7135  
bfenkell@oxfordcompanies.com

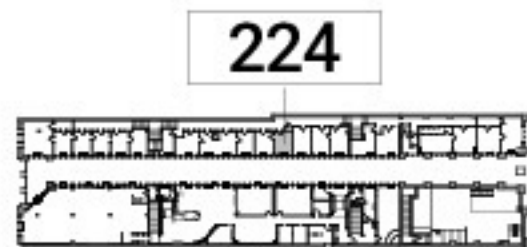
Nickels Arcade  
326-330 S State St, Suite 224  
Ann Arbor, MI 48104



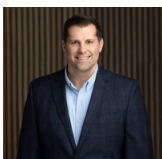
Integrated  
Real Estate  
Services



 Suite 224 - Partial Existing Level 2 Plan  
1/4" = 1'-0"



 Key Plan - Level 2  
1" = 100'-0"



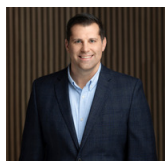
Contact Brad Fenkell for more information or to schedule a tour.

Office: 734.665.6500  
Cell: 734.395.7135  
bfenkell@oxfordcompanies.com

Nickels Arcade  
326-330 S State St, Suite 8 & 8B  
Ann Arbor, MI 48104



Integrated  
Real Estate  
Services



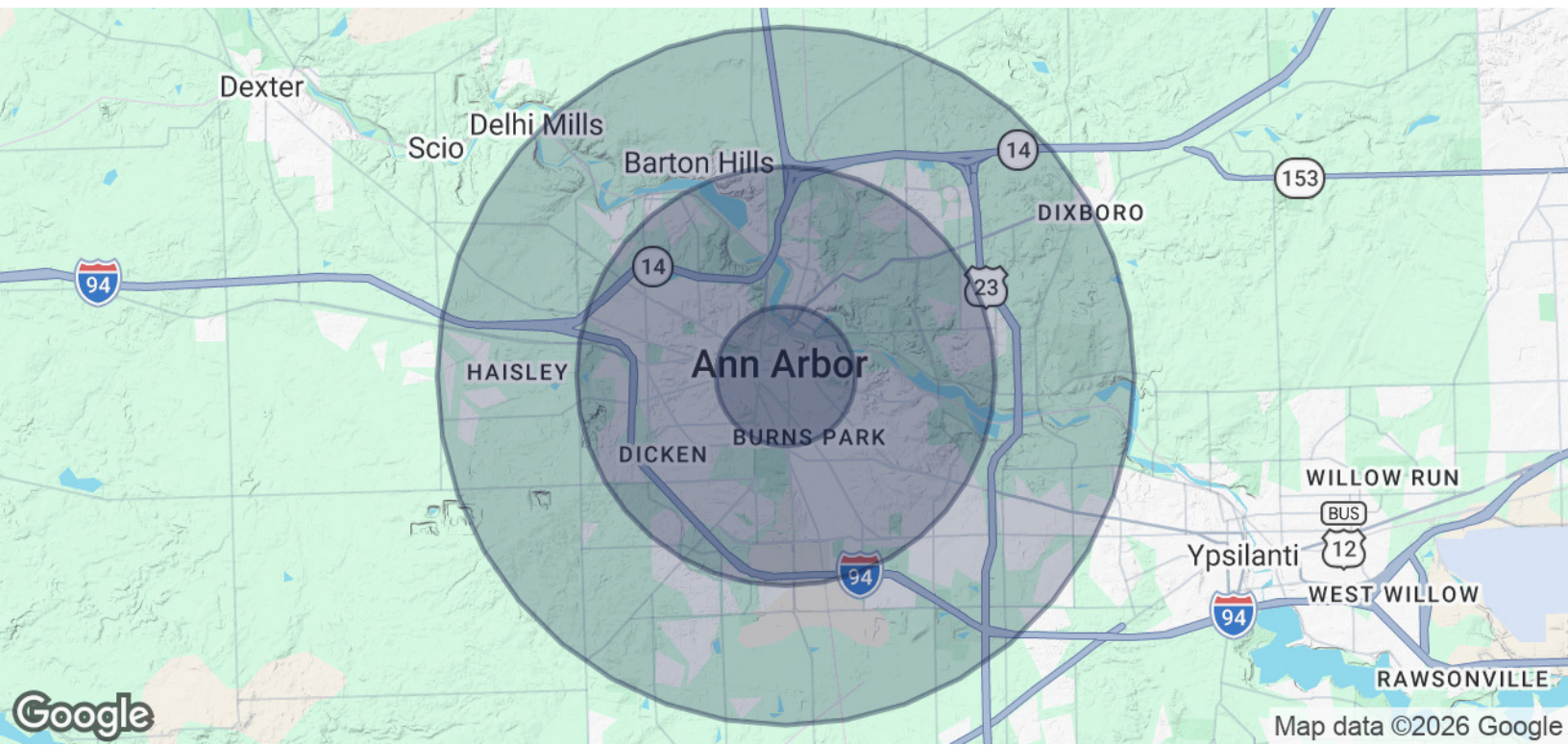
Contact Brad Fenkell for more information or to schedule a tour.

Office: 734.665.6500  
Cell: 734.395.7135  
bfenkell@oxfordcompanies.com

Nickels Arcade  
 326-330 S State St, Suite 224  
 Ann Arbor, MI 48104



Integrated  
 Real Estate  
 Services

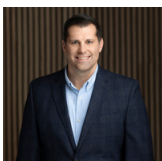


<b>POPULATION</b>	<b>1 MILE</b>	<b>3 MILES</b>	<b>5 MILES</b>
Total Population	35,450	108,651	165,717
Average Age	28	35	37
Average Age (Male)	28	35	36
Average Age (Female)	28	36	38

<b>HOUSEHOLDS &amp; INCOME</b>	<b>1 MILE</b>	<b>3 MILES</b>	<b>5 MILES</b>
Total Households	12,488	44,193	69,092
# of Persons per HH	2.8	2.5	2.4
Average HH Income	\$72,572	\$119,934	\$125,202
Average House Value	\$551,987	\$536,837	\$496,675

2020 American Community Survey (ACS)



Contact Brad Fenkell for more information or to schedule a tour.

Office: 734.665.6500  
 Cell: 734.395.7135  
[bfenkell@oxfordcompanies.com](mailto:bfenkell@oxfordcompanies.com)