



# 1299 Tiger Tail Ln

Canton, NC 28716

**Available for Sale**  
+/- 275 AC Residential Land



**Appalachian Mountain Assemblage in Western Carolina | 20 Miles West of Downtown Asheville**

## Property Overview

# 1299 Tiger Tail Lane Available for Sale

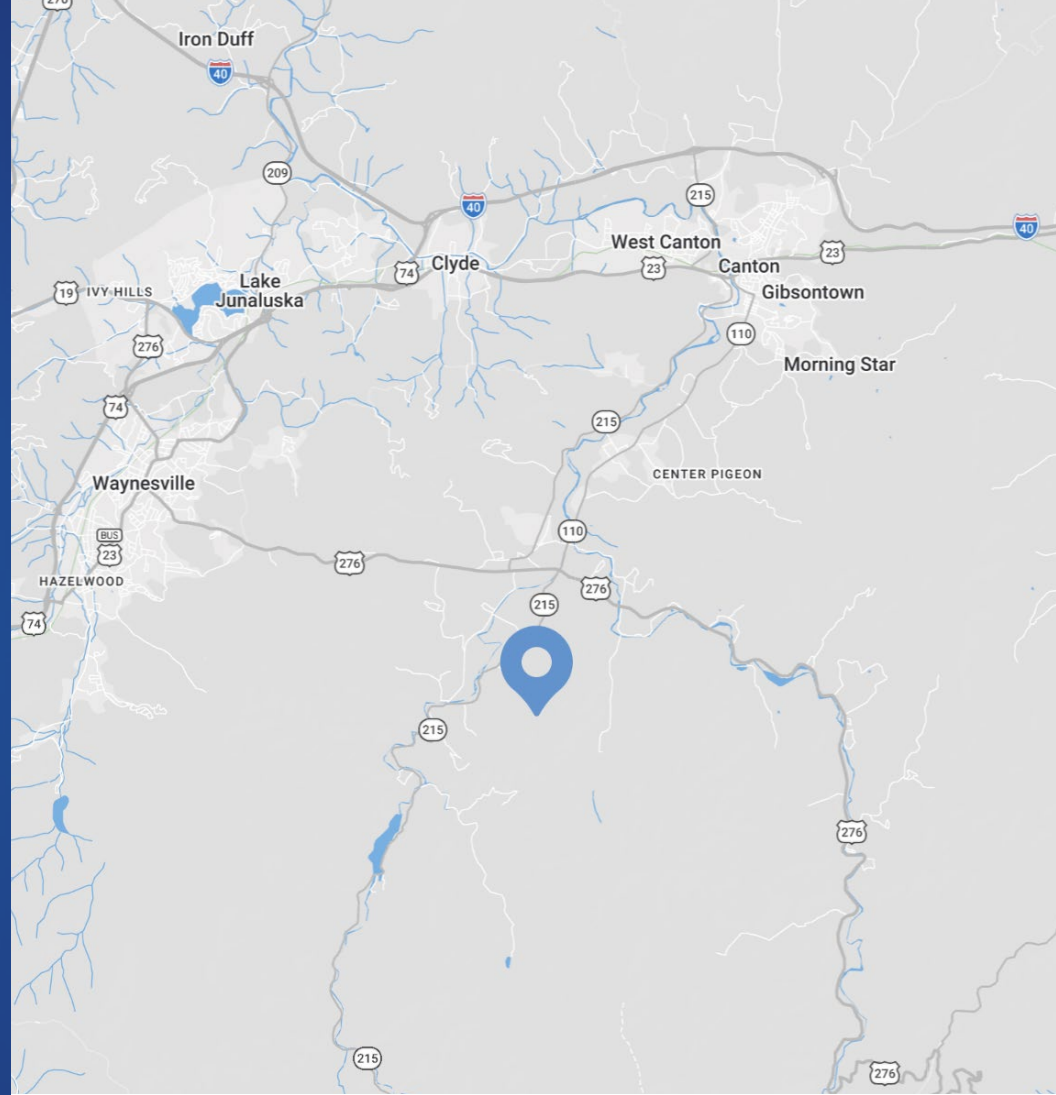
Rare opportunity to acquire a +/- 275 AC mountain assemblage in Western North Carolina, located just 20 miles west of downtown Asheville. Comprised of six parcels, this offering delivers a compelling combination of scale, privacy, and long-term potential in a region where large contiguous tracts are increasingly difficult to find.

Positioned in the Southern Appalachian Mountains, the property features elevated topography, mature hardwoods, and the potential for expansive mountain views, creating a strong foundation for a variety of uses including a private estate, family compound, recreational retreat, or residential development.

Access is provided via Tiger Tail Ln and Dix Creek Rd, with smaller frontage parcels supporting entry to the larger acreage. The surrounding area offers proximity to Canton's historic downtown, riverfront setting, and parkland, along with convenient access to Asheville, Waynesville, and the broader Western North Carolina mountain corridor.

## Property Details

<b>Address</b>	1299 Tiger Tail Lane   Canton, NC 28716
<b>Availability</b>	+/- 275 AC Available for Sale
<b>Use</b>	Land
<b>Parcel IDs</b>	8643-34-8668, 8643-56-9080, 8643-56-6088, 8643-36-9620, 8643-26-4825, 8643-47-5239
<b>Zoning</b>	Residential
<b>Sale Price</b>	Call for Pricing



## Demographics

RADIUS	5 MILE	10 MILE	15 MILE
<b>2025 Population</b>	7,170	49,444	88,695
<b>Avg. Household Income</b>	\$77,024	\$79,799	\$86,621
<b>Median Household Income</b>	\$61,426	\$62,930	\$66,512
<b>Households</b>	2,945	22,207	39,596
<b>Daytime Employees</b>	857	18,515	25,862



+/- 275 AC



+/- 275 AC

# Site Overview





# Market Overview



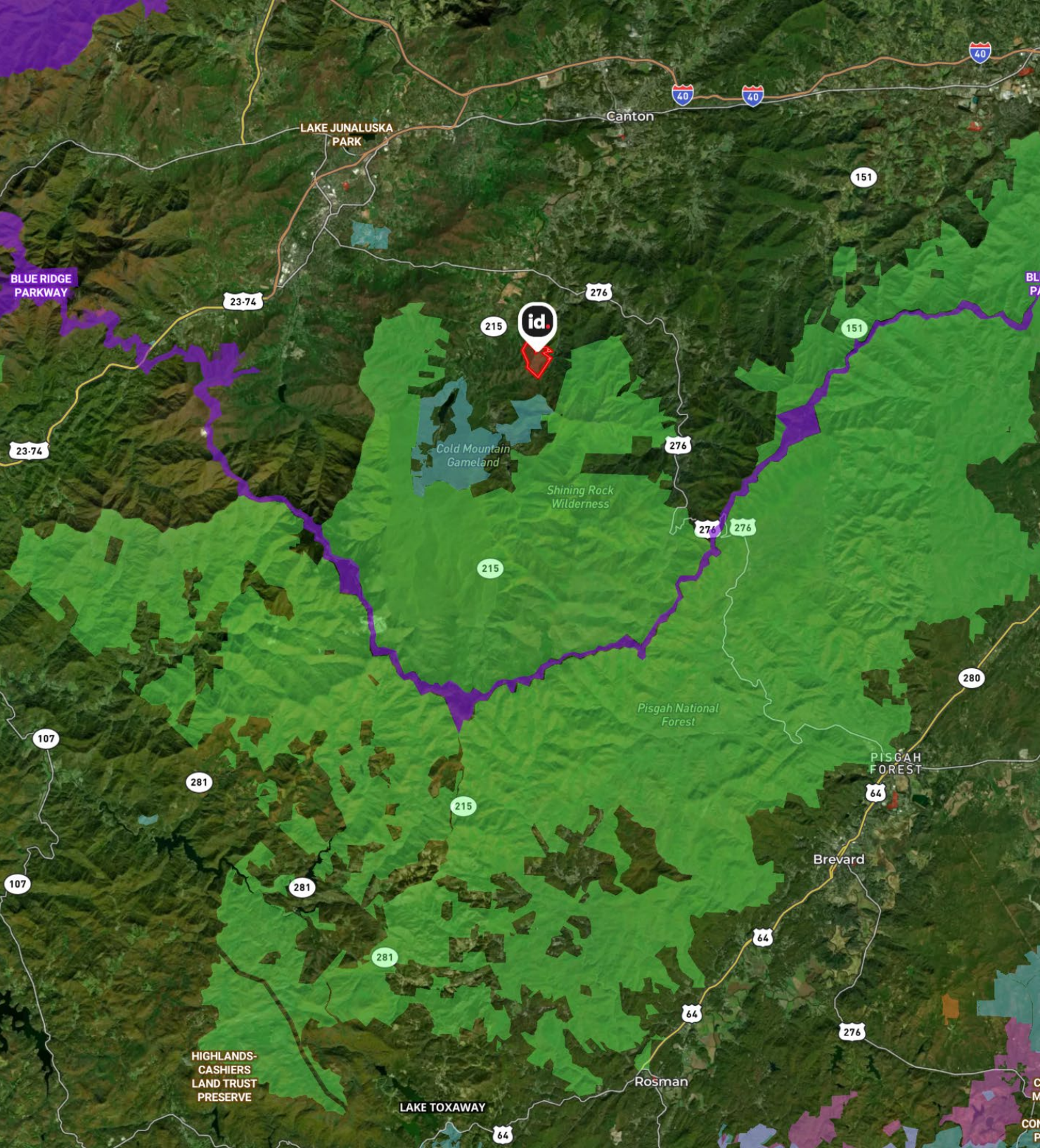


# Canton

Where Community and Opportunity Meet

Nestled in the scenic Blue Ridge Mountains of western North Carolina, Canton is a community defined by its rich history and commitment to progress. Historically shaped by its role in regional industry and its location along the Pigeon River, Canton has evolved into a town that values both tradition and forward-thinking development. With its close proximity to Asheville and access to abundant natural beauty, the town offers a strategic blend of small-town character and economic opportunity, making it an attractive place for residents, businesses, and visitors alike.





Contact for Details

## Rusty Gibbs

(704) 373-9797

rusty@thenicholscompany.com

## John Nichols

(704) 373-9797

jnichols@thenicholscompany.com



### Website

[www.TheNicholsCompany.com](http://www.TheNicholsCompany.com)

### Phone

Office (704) 373-9797

Fax (704) 373-9798

### Address

1204 Central Avenue, Suite 201

Charlotte, NC 28204

This information has been obtained from sources believed to be reliable. While we do not doubt its accuracy, we have not verified it and make no guarantee, warranty or representation to independently confirm its accuracy and completeness.