

123

MELROSE STREET BUSHWICK, BROOKLYN

Between Evergreen Avenue & Stanwix Street

RESTAURANT/RETAIL FOR LEASE

APPROXIMATE SIZE

Space A: 2,077 SF
Space B: 1,887 SF
Space C Lower Level: 10,355 SF

ASKING RENT

Upon Request

POSSESSION

Immediate

TERM

Negotiable

FRONTAGE

75 FT on Evergreen
41 FT on Melrose

COMMENTS

- At the base of The Denizen, a 911-unit residential building
- Institutional ownership group
- Anchored by brand-new 14,000 SF gourmet market
- Direct access to monthly/transient parking garage
- Landlord is willing to contribute for build-out for F&B operators
- Located in the heart of the rapidly growing area of Bushwick
- Landlord to bring all power upgrades

NEIGHBORS

Foodtown • Sweet Anaelle • Trillfit • Lovebirds • Keybar • Drip Coffee • The Little Whiskey • Yours Sincerely • Loncheria • Dayglow • Star Deli & Grill

TRANSPORTATION



PROPERTY INFORMATION

STEPHEN LIGAMBI

Senior Associate
212.468.5985
sligambi@meridiancapital.com

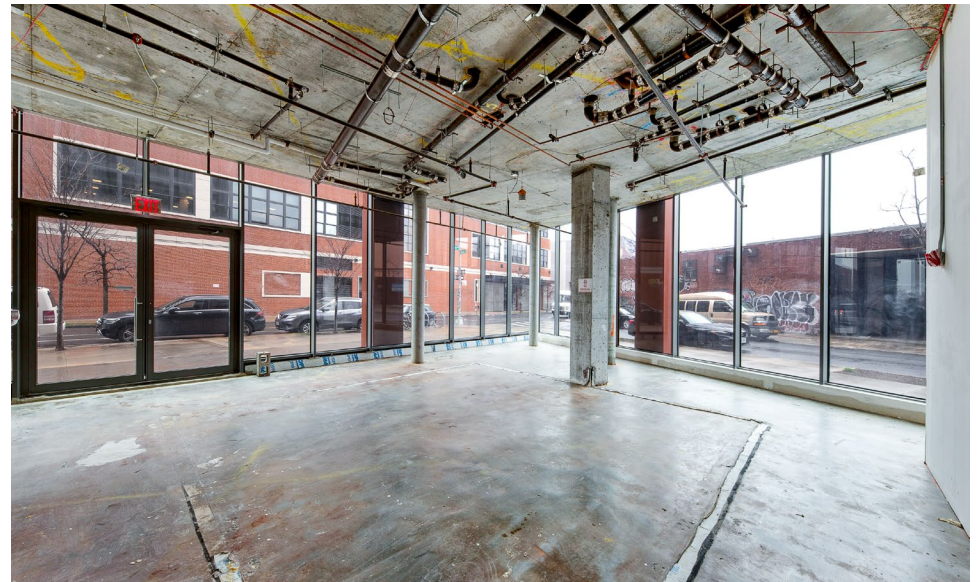
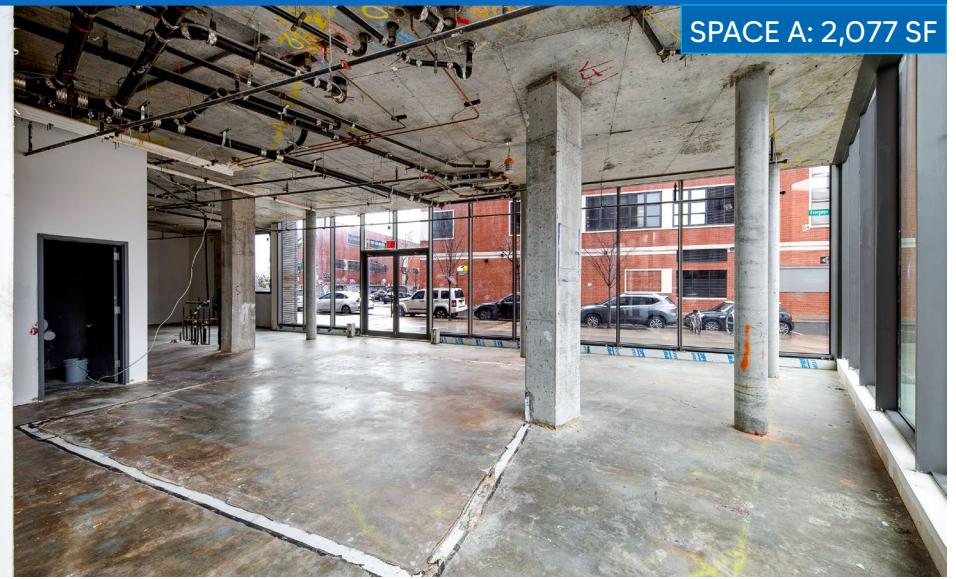
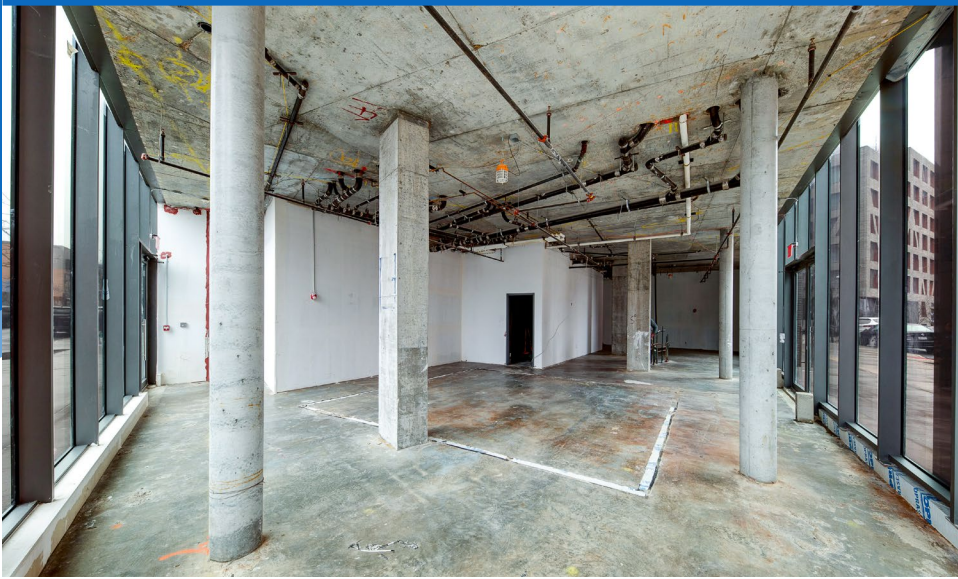


All information supplied is from sources deemed reliable and is furnished subject to errors, omissions, modifications, removal of the listing from sale or lease, and to any listing conditions, including the rates and manner of payment of commissions for particular offerings imposed by Meridian Capital Group. This information may include estimates and projections prepared by Meridian Capital Group with respect to future events, and these future events may or may not actually occur. Such estimates and projections reflect various assumptions concerning anticipated results. While Meridian Capital Group believes these assumptions are reasonable, there can be no assurance that any of these estimates and projections will be correct. Therefore, actual results may vary materially from these estimates and projections. Any square footage dimensions set forth are approximate.

123 MELROSE STREET

BUSHWICK, BROOKLYN | Between Evergreen Avenue and Stanwix Street

RESTAURANT/RETAIL FOR LEASE



INTERIOR | SPACE A

STEPHEN LIGAMBI

Senior Associate

212.468.5985

sligambi@meridiancapital.com



All information supplied is from sources deemed reliable and is furnished subject to errors, omissions, modifications, removal of the listing from sale or lease, and to any listing conditions, including the rates and manner of payment of commissions for particular offerings imposed by Meridian Capital Group. This information may include estimates and projections prepared by Meridian Capital Group with respect to future events, and these future events may or may not actually occur. Such estimates and projections reflect various assumptions concerning anticipated results. While Meridian Capital Group believes these assumptions are reasonable, there can be no assurance that any of these estimates and projections will be correct. Therefore, actual results may vary materially from these estimates and projections. Any square footage dimensions set forth are approximate.

123 MELROSE STREET

BUSHWICK, BROOKLYN | Between Evergreen Avenue and Stanwix Street

RESTAURANT/RETAIL FOR LEASE

FLOOR PLAN | TEST FIT SPACE A



STEPHEN LIGAMBI

Senior Associate

212.468.5985

sligambi@meridiancapital.com

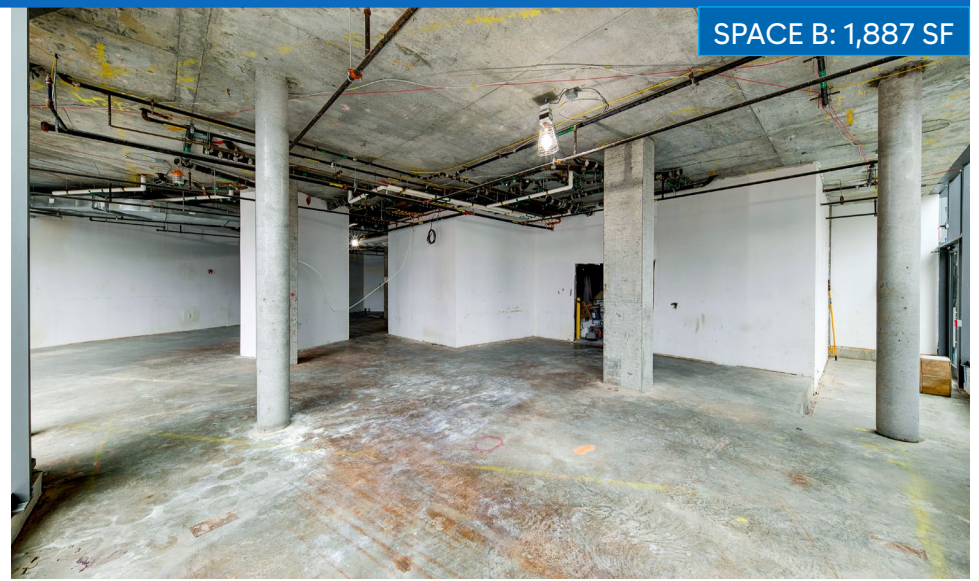
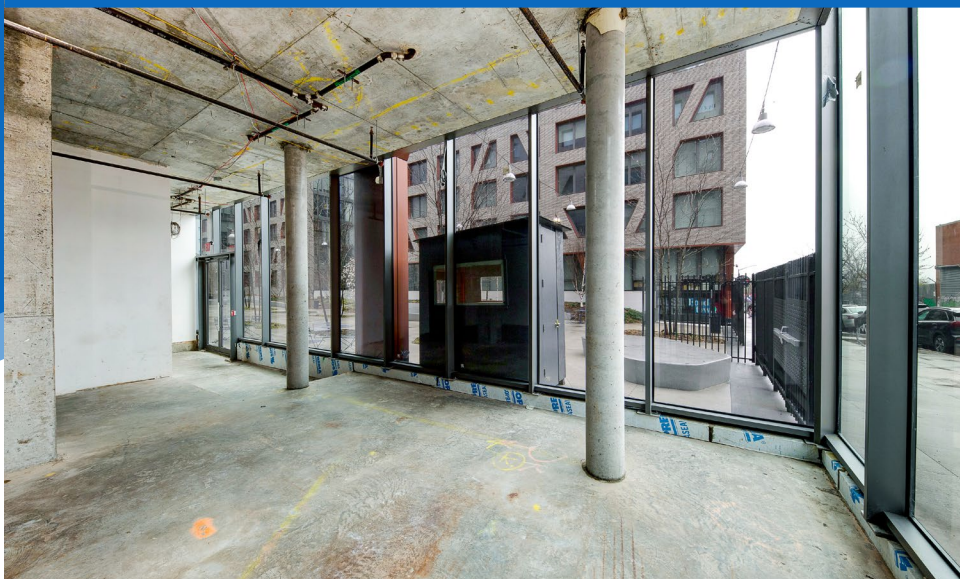


All information supplied is from sources deemed reliable and is furnished subject to errors, omissions, modifications, removal of the listing from sale or lease, and to any listing conditions, including the rates and manner of payment of commissions for particular offerings imposed by Meridian Capital Group. This information may include estimates and projections prepared by Meridian Capital Group with respect to future events, and these future events may or may not actually occur. Such estimates and projections reflect various assumptions concerning anticipated results. While Meridian Capital Group believes these assumptions are reasonable, there can be no assurance that any of these estimates and projections will be correct. Therefore, actual results may vary materially from these estimates and projections. Any square footage dimensions set forth are approximate.

123 MELROSE STREET

BUSHWICK, BROOKLYN | Between Evergreen Avenue and Stanwix Street

RESTAURANT/RETAIL FOR LEASE



SPACE B: 1,887 SF



INTERIOR | SPACE B

STEPHEN LIGAMBI

Senior Associate

212.468.5985

sligambi@meridiancapital.com



All information supplied is from sources deemed reliable and is furnished subject to errors, omissions, modifications, removal of the listing from sale or lease, and to any listing conditions, including the rates and manner of payment of commissions for particular offerings imposed by Meridian Capital Group. This information may include estimates and projections prepared by Meridian Capital Group with respect to future events, and these future events may or may not actually occur. Such estimates and projections reflect various assumptions concerning anticipated results. While Meridian Capital Group believes these assumptions are reasonable, there can be no assurance that any of these estimates and projections will be correct. Therefore, actual results may vary materially from these estimates and projections. Any square footage dimensions set forth are approximate.

123 MELROSE STREET

BUSHWICK, BROOKLYN | Between Evergreen Avenue and Stanwix Street

RESTAURANT/RETAIL FOR LEASE

FLOOR PLAN | TEST FIT SPACE B



STEPHEN LIGAMBI

Senior Associate

212.468.5985

sligambi@meridiancapital.com



All information supplied is from sources deemed reliable and is furnished subject to errors, omissions, modifications, removal of the listing from sale or lease, and to any listing conditions, including the rates and manner of payment of commissions for particular offerings imposed by Meridian Capital Group. This information may include estimates and projections prepared by Meridian Capital Group with respect to future events, and these future events may or may not actually occur. Such estimates and projections reflect various assumptions concerning anticipated results. While Meridian Capital Group believes these assumptions are reasonable, there can be no assurance that any of these estimates and projections will be correct. Therefore, actual results may vary materially from these estimates and projections. Any square footage dimensions set forth are approximate.

123 MELROSE STREET

BUSHWICK, BROOKLYN | Between Evergreen Avenue and Stanwix Street

RESTAURANT/RETAIL FOR LEASE

SPACE C: 10,355 SF



INTERIOR | SPACE C

STEPHEN LIGAMBI

Senior Associate

212.468.5985

sligambi@meridiancapital.com



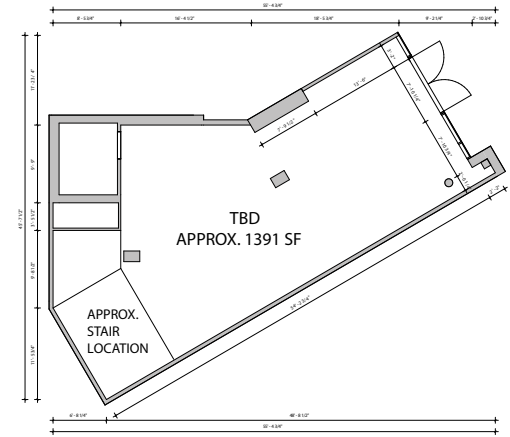
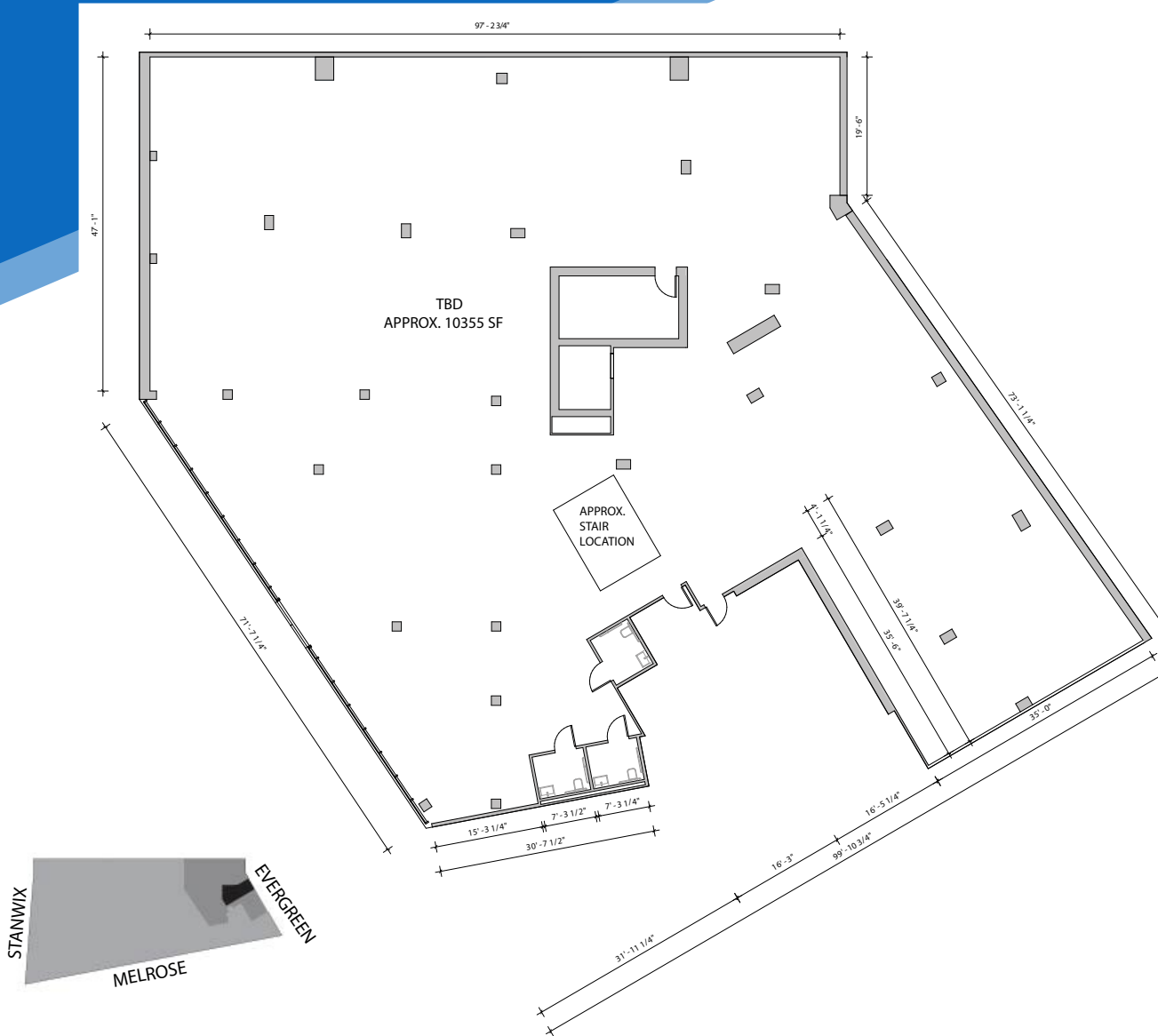
All information supplied is from sources deemed reliable and is furnished subject to errors, omissions, modifications, removal of the listing from sale or lease, and to any listing conditions, including the rates and manner of payment of commissions for particular offerings imposed by Meridian Capital Group. This information may include estimates and projections prepared by Meridian Capital Group with respect to future events, and these future events may or may not actually occur. Such estimates and projections reflect various assumptions concerning anticipated results. While Meridian Capital Group believes these assumptions are reasonable, there can be no assurance that any of these estimates and projections will be correct. Therefore, actual results may vary materially from these estimates and projections. Any square footage dimensions set forth are approximate.

123 MELROSE STREET

BUSHWICK, BROOKLYN | Between Evergreen Avenue and Stanwix Street

RESTAURANT/RETAIL FOR LEASE

FLOOR PLAN | TEST FIT SPACE C



LOBBY CAN BE LEASED TOGETHER

STEPHEN LIGAMBI

Senior Associate
212.468.5985

sligambi@meridiancapital.com



All information supplied is from sources deemed reliable and is furnished subject to errors, omissions, modifications, removal of the listing from sale or lease, and to any listing conditions, including the rates and manner of payment of commissions for particular offerings imposed by Meridian Capital Group. This information may include estimates and projections prepared by Meridian Capital Group with respect to future events, and these future events may or may not actually occur. Such estimates and projections reflect various assumptions for particular offerings imposed by Meridian Capital Group. While Meridian Capital Group believes these assumptions are reasonable, there can be no assurance that any of these estimates and projections will be correct. Therefore, actual results may vary materially from these estimates and projections. Any square footage dimensions set forth are approximate.

