

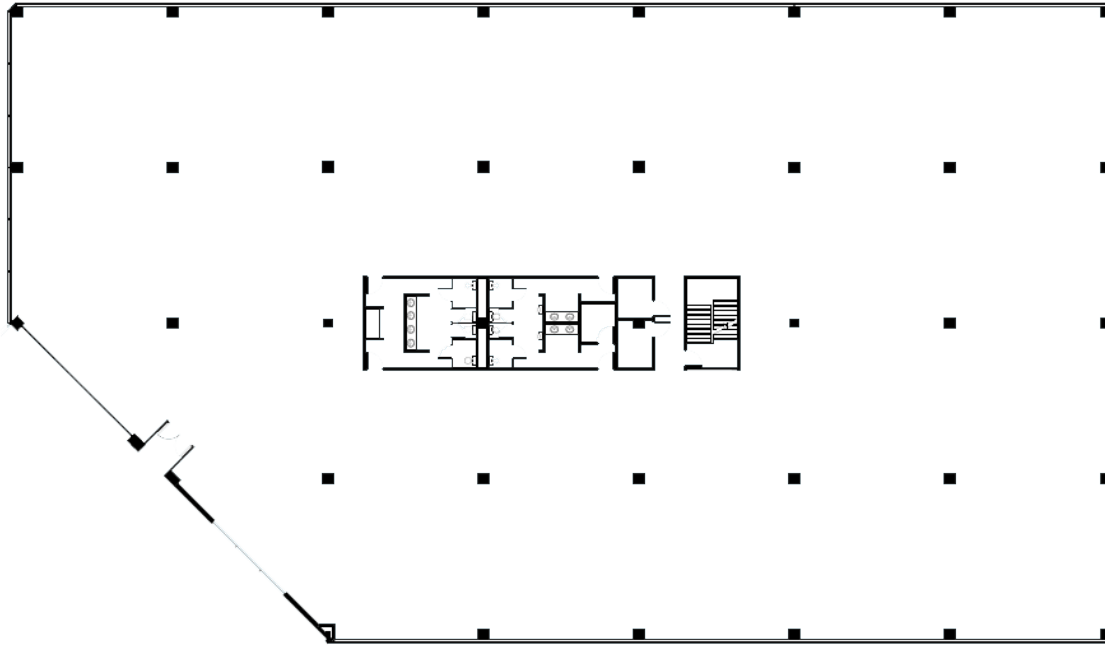
SUITE 201 | 26,225 SF

215 Shuman Blvd \ Naperville, IL



SPACE NOTES

- Open workspace ready for tenant buildout



Ryan Moen, SIOR
630.480.6346
RMoen@VersaRES.com

John Millner, CCIM
630.480.6342
JMillner@VersaRES.com

Kyle Harris
630.716.3147
KHarris@VersaRES.com

1 MID AMERICA PLAZA, 3RD FLOOR
OAKBROOK TERRACE, IL 60181
630.480.6413

EXCLUSIVELY LISTED BY
VERSA
REAL ESTATE SERVICES