



WAIMALU PLAZA

98-1277 KAAHUMANU ST
AIEA, HI 96701

RETAIL FOR LEASE

NEW SPACES OPENING SOON

CITY MILL WAIMALU OFFERING 22,000 SF AVAILABLE

City Mill is a notable and locally owned business retail destination for Hawaii's Kama'aina. Located in the Waimalu Plaza, it is easily accessible for residents in Aiea and surrounding area. This space is an attractive opportunity if you're looking to establish a presence in a well-trafficked area.

PROPERTY HIGHLIGHTS

- Lots of parking
- Great visibility
- Popular neighborhood shopping center





CITY MILL
YOUR SUPERHARDWARE STORE

22,000 SF

SITE PLAN

**SPACE AVAILABLE:
22,000 SF**

TMK

(1) 9-8-8-25

TERM

10 YEARS

ZONING

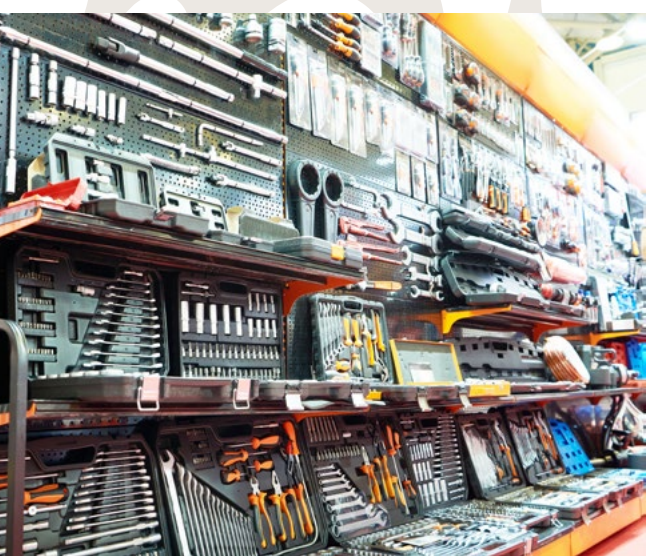
B2

RENT

UPON REQUEST

OPERATING EXPENSES

\$0.52 PSF/Mo





Emalia Pietsch (S)
Retail Services Division
Lic# RS-70893
808 523 9710
emalia.pietsch@colliers.com

Jon-Eric Greene (B)*
Retail Services Division
Lic# RB-17777
808 330 2900
jon-eric.greene@colliers.com



*Greene Property Group, LLC. Exclusively contracted to Colliers International HI, LLC
This document/email has been prepared by Colliers for advertising and general information only. Colliers makes no guarantees, representations or warranties of any kind, expressed or implied, regarding the information including, but not limited to, warranties of content, accuracy and reliability. Any interested party should undertake their own inquiries as to the accuracy of the information. Colliers excludes unequivocally all inferred or implied terms, conditions and warranties arising out of this document and excludes all liability for loss and damages arising there from. This publication is the copyrighted property of Colliers and /or its licensor(s). © 2024. All rights reserved. This communication is not intended to cause or induce breach of an existing listing agreement.